



OCTOBER 9, 2025
THE EVOLUTION

EVOLUTION SUCCESS
EVOLUTION SUCCESS
EVOLUTION SUCCESS
EVOLUTION SUCCESS



EVOLUT
EVOLUT
EVOLUT
EVOLUT
EVOLUT





SALE INFORMATION

SALE DAY PHONES -----

Randy Noble (306) 821-0113
Toby Noble (306) 821-2071
Ryley Noble (780) 522-8385
Neil Noble (780) 808-9082
Jeff Noble (306) 821-4383
Scott Payne (306) 825-4328
Jayden Payne (306) 821-2260
Jaxon Payne (306) 830-0456
Austin Fisk (306) 307-3449

SALE STAFF -----

Bohrson Marketing Services

Scott Bohrson (403) 370-3010
Taylor Richards (306) 821-4169
Jaxon Payne (306) 830-0456
Martin Bohrson (306) 220-7901
Robert Voice (306) 270-6082
Darryl Snider (780) 385-5561
Nate Marin (306) 869-7130
Cody Haney (403) 845-8806
Riley Bohrson (639) 213-7777

Auctioneer

Ryan Dorrان (403) 507-6483

Ringmen

Rod McLeod (403) 540-7986
Taylor Richards (306) 821-4169

Consultants

Mark Holowaychuk (403) 896-4990
Roger Peters (403) 828-9815

ONLINE BIDDING -----

Online bidding will be available through **DLMS**
Mark Shologan (780)699-5082

ACCOMODATIONS

Days Hotel & Suites - Lloydminster, SK
780.875.4404

OCTOBER 9TH
at **BLACK GOLD
SIMMENTAL**

SCHEDULE M.S.T.

1:00PM | CATTLE VIEWING *viewing also available all day Wednesday

5:00PM | STEAK SUPPER

7:00PM | EVOLUTION SALE

SOCIAL TO FOLLOW

JUNIOR INCENTIVE PROGRAM **NEW**

Win cash for exhibiting your Evolution sale heifer at any junior show in the country!

> **4-H ACHIEVEMENT DAY:**

Champion- \$100, Reserve- \$50

> **REGIONAL 4-H SHOWS/JUNIOR JACKPOT SHOWS/SUMMER FAIRS:**

Champion- \$200, Reserve- \$100

> **PROVINCIAL BREED SHOWS/ALL BREEDS:**

Champion- \$500, Reserve- \$300, Division Champion- \$200, Reserve Division- \$100

> **NATIONAL JUNIOR SHOW/JUNIOR SHOW AT STOCKADE ROUND-UP, TORONTO ROYAL, FARMFAIR, AND AGRIBITION:**

Champion- \$1000, Reserve- \$500, Division Champion \$300, Reserve Division \$200

*Only one award per heifer, per show. Must submit a backdrop photo to receive prize!

TERMS & CONDITIONS

Cattle will sell under the standard Terms & Condition set out by the Canadian Simmental Association and Canadian Angus Association, these are available on request.

CATALOGUE INFORMATION

Catalogue production was done by Bohrson Marketing Services Ltd. EPD's are current and up-to-date as of publication date. Information in this document is believed to be accurate but any updates at the sale by the owners, auctioneer or sales management will take precedence over the information provided in the sale catalogue. Pedigrees in this document have been supplied by the Breed Association and all other information has been supplied by the seller.



CONSIGNORS

20/20 ANGUS

The Legaardens | Owen - 306-903-7070

3 G CATTLE VENTURES

Cole Giles - 403-703-3026

BAR SK CATTLE COMPANY

The Eaton Family | Shannon 780-872-9375

BLACKFOOT CATTLE

The Davies Family | Will - 306-830-2033

CAY'S CATTLE

Justin, Layne, & Jade Cay | 306-864-7893

COUNTRY LANE ANGUS

The Partington Family
Archie - 780-787-7020

CHATSWORTH LAND AND CATTLE

Nick & Alex Wasylik - 639-840-1125

DOUBLE RN RANCHING

The Noble Family | Ryan - (306) 839-7949

KAY-R LAND & CATTLE LTD.

The Phillips Family | Kord - 780-650-2364

RAFTER 4T FARMS

The Tatarin Family
Darrel - 780-603-3706

RUSYLVA CATTLE CO./ SHOLOGAN CATTLE

The Pashulka & Shologan Families
Riley - 780-581-3013

TER-RON FARMS

The Adams Family
Rob - 780-385-0849

TWIN SPRINGS FARM

The Thompson Family
Braydon - 780-214-0879

WALLGREN FARMS

The Wallgren Family | Brant - 639-840-0126

WESTWAY FARMS

The Hadway Family
Brayden & Andie Schmidt - 403-586-4929

FROM *Welcome* BLACK GOLD SIMMENTAL + GREENWOOD CATTLE

Welcome to the Fifth Edition of The Evolution

It's incredible how quickly our short summers pass. Before we know it, harvest season is here - and with it, the excitement of preparing for the fifth edition of The Evolution. What a time to be part of the cattle industry! With record-high prices and a strong market outlook, we feel fortunate to live this lifestyle and raise our families in an industry we're so proud of. The future is bright, and we're thrilled to share it with you this fall.

When we launched this sale, we could never have imagined the success and support it would generate, and now, five years later, it's an honor to welcome fellow producers and their cattle into the lineup. To everyone who has supported us along the way; by attending, bidding, or trusting us to represent your program, thank you!! Your confidence in this sale means everything. This year's offering is our largest and deepest to date, and we're especially excited to continue building the tradition of featuring top cattle from our customers alongside our own. As always, we've committed to selling only the very top end of our heifer calves and bred females, and 2025 is no exception—the cattle on offer truly represent the elite of our aggressive AI and ET programs at both Black Gold and Greenwood.

We're proud to stand behind the cow families represented in this sale. From Fullbloods to Purebreds to Angus, the females backing this lineup are among the most proven in our herds and their respective breeds. The Fullblood bred heifer group is as consistent as we've ever produced, highlighted by daughters of the timeless Battle Cry and the first bred females by our exciting new sire, SAJ Vigilante. Most are due early January, offering more time between calving and rebreeding. New this year, we're also offering a high-quality polled Fullblood heifer calf out of a female purchased by Rafter 4T in last year's sale.

On the red and black side, this year's breds are as unique as we've ever

offered. Standouts include a powerful Countertime daughter from the Sandeen Donna family and an impressive set of LFE Cabaret daughters. Red enthusiasts will appreciate the elite daughter of the legendary Springcreek Brooke 68Z, along with a strong group of WFL Mountain View progeny. For the first time, we're also offering majority interest in a young, two-year-old baldy female who has already proven herself in embryo production. This Hayleigh daughter is truly one of the most exciting females we've had the privilege to offer.

The Simmental heifer calf division is also the largest we've ever presented, backed by some of our most elite donors. Included are daughters and granddaughters of 2019/2020 Triple Crown Champion Hayleigh, 2022 Farmfair Supreme Champion Darlin, and 2023 Agribition Supreme Champion Peppa. Also featured is the first daughter to sell from our past high-seller, Black Gold Tangleflags. Each heifer calf is show broke, and we're happy to visit with you about their temperaments to ensure the best fit for your program.

The Angus offering remains strong, featuring an impressive group of heifer calves and bred females, as well as a rare-quality, proven herd bull. Whether you're looking to elevate your breeding program or find an exciting Junior project, this lineup has something for everyone.

We're once again proud to partner with the outstanding team at Bohrsen Marketing Services. Their professionalism, expertise, and dedication are unmatched, and they treat every client with top-tier service. If you can't attend in person, we highly encourage you to reach out to them about this year's offering.

Please don't hesitate to reach out with any questions or come for a visit to tour the cattle.

We look forward to seeing you on October 9th!

— The Evolution Team





WELCOME BOHRSON MARKETING SERVICES

Each year we look forward to the exceptional line up of cattle offered by the Noble and Payne families and this 2025 event is sure to be one of the hardest sets of cattle to ever duplicate. Black Gold Simmental and Greenwood Cattle have certainly rose to the occasion of these unprecedented times in the beef industry bringing forth a group of sale cattle you just have to see. New this year they have dug deep into some valued customers pens as well to feature some of their strong genetics that have gone on to work well in other operations as well. This is one of the most anticipated auctions each year and we wish to invite you to join us in the heart of cow country for the 5th annual Evolution Sale.

The Simmental offering is anchored by an exceptional young cow not even in the prime of her life yet, backed by one of the hottest cow families at BGS as well as a heifer calf from the same cow family that would be the first daughter to sell by the \$210,000 Tangleflags 31L that is arguably one of the most exciting heifer calves ever produced at Black Gold. The bred heifer division in the Fullblood, red and black sections are all the same powerful brood matrons you have come to expect from this sale with exciting services, guaranteed to clip huge coupons. The fancy heifer calves in the simmental division are the cream of the crop from each respective program represented and are guaranteed to have big bright futures.

The Angus cattle on offer uniquely are highlighted by past Agribition Champion and proven breeding bull, Four Mile 47J. This herdsire is in the prime of his life and becomes up for auction solely because of the huge impact he has already made at both Greenwood and Ter-Ron and the lack of areas to utilize him. His influence is deep in this sale as well with both bred females and heifer calves available. As exciting and as deep as the Greenwood offering is for Evolution, the very cool part is how strong the Greenwood genetics are and are represented in this sale from customers. Either sired by Greenwood bulls or mothered by Greenwood cows, the customer cattle are flat out impressive and perfectly compliments the Greenwood program and their cattle. The Angus offering has some of the most impactful cow families represented in the bred heifer portion of the sale and the heifer calves have a tonne of potential yet this fall on the show road and then will undoubtedly go on to make big time cows.

The best thing you could do as you wrap up harvest or fall work is book the evening off on October 9th, maybe even the next day on October 10th to take in the hospitality, festivities and of course the cattle at the Black Gold Simmental Sale Facility, east of Lloydminster. The combination of one of the funnest evenings of the year and some of the best cattle of the fall await you and we encourage you to be with us. If your busy schedules keep you from the fun, please don't hesitate to contact the BMS team as we would be happy to visit with you about the cattle on offer and represent your absentee bidding and buying needs. We look forward to visiting with you and hope to see you sale evening!

Best Regards,
The Bohrson Marketing Team





AI Bred to BLACK GOLD GENERAL MANAGER 153M on MAR. 23/25 (SAFE). Exposed to KSL Kilipso 25K April 10-June 1.

Non-Diluter. 181M has been a standout her entire life and one we have been excited to feature in The Evolution. It only seemed fitting to make her "Lot 1", after her full sister was our high selling bred heifer last year selling to Beechinor Bro's and Wilson Stock Farm. 181M has the same easy fleshing, huge bodied, stout made image as her sister, and once again looks to be setting down a great udder. Both of these females were so similar to their powerful dam, who was purchased from the Labatte program. After 175J's first two chances in production, there is no question she is working her way into our ET program in the future. 181M carries a very early service to our high selling Kilipso son this last spring, General Manager, purchased by Canadian Sires

1

BGS/LINDGREN MS CANON 181M

Fullblood - Polled - CLNO 181M - 1510944 - Jan 25, 2024									
CE	BW	WW	YW	Milk	MCE	MWWT	STAY	API	TI
12.7	2.6	72.4	96.5	34.2	10.3	70.4	18.1	119.51	69.84

Act.BW **86**
Adj.WW -

SIRE NAC BATTLE CRY 4F
DAM IPU 54E MS CANON 175J

BEE BATTLE CRY 282B
MI MS DALLAS 39D
SUNNY VALLEY CANON 86E
IPU MS. STANDOUT 54E



FULL SISTER



DAM



AI Bred to BLACK GOLD GENERAL MANAGER 153M on MAR. 30/25 (SAFE). Exposed to KSL Kilipso 25K from April 10-June 1.

Non-Diluter. Another powerhouse in our offering and a favorite of many visitors is this easy fleshing Battle Cry daughter. 70M is a mold of her high performing, big, square footed dam. The Battle Cry x Reputation has worked for us time and time again and is responsible for some of our best cows on the farm. There is no question Battle Cry has increased the quality of our spring bull sale each year, but the daughters he has sired is where we feel his impact is truly seen. Again an early service here to one of our favorite calving ease bulls we have raised in recent years, General Manager.

BLACK GOLD MS KALI 70M

2

Fullblood - Polled - CLNO 70M - 1472165 - Jan 10, 2024

CE	BW	WW	YW	Milk	MCE	MWWT	STAY	API	TI
10.8	3.6	70.1	93.4	35.9	9.1	70.9	17.3	113.36	67.28

Act.BW 90

SIRE NAC BATTLE CRY 4F

Adj.WW -

DAM BLACK GOLD MS KALI 53J

BEE BATTLE CRY 282B
MI MS DALLAS 39D

SBV REPUTATION 707F
BLACK GOLD MS KALI 45G



SERVICE SIRE



Non-Diluter. 58B has been one of our best producing fullblood cows in recent years, and is a direct daughter of our old 18U donor who was the first fullblood cow that we ever flushed. This cow family is consistent in raising the dark red, huge bodied, awesome footed kind with good udders. 58B has put nine sons through our bull sale over the years, with three of them going to fellow breeders, six daughters retained in the herd, and her one daughter sold was our leadoff and high selling lot in our first ever Evolution Sale. She went to Curtis Simmentals for \$30 000, and they had around 20 calves born off her in 2025. Look for 287M to produce the same hairy, dark red, heavy pigmented, powerful kind that her dam and granddam did for us for many years.

AI Bred to BLACK GOLD GENERAL MANAGER 153M on MAR. 30/25 (SAFE). Exposed to KSL Kilipso 25K from April 10-June 1.

BLACK GOLD MS HOTCHELLRAE 287M

Fullblood - Horned - CLNO 287M - 1494711 - Feb 18, 2024

CE	BW	WW	YW	Milk	MCE	MWWT	STAY	API	TI
11.1	2.8	67	89.4	37.7	9	71.2	23.1	125.36	66.47

3

Act.BW 94

SIRE NAC BATTLE CRY 4F

Adj.WW -

DAM BLACK GOLD HOTCHELLRAE58B

BEE BATTLE CRY 282B
MI MS DALLAS 39D

SOUTHSEVEN MR ADONIS 96Z
NCS MS JAHARI 18U



MATERNAL BROTHER



DAM

4

BLACK GOLD MS KRISTIN 106M

Fullblood - Horned - CLNO 106M - 1493568 - Jan 15, 2024

CE	BW	WW	YW	Milk	MCE	MWWT	STAY	API	TI
12.3	3.1	70.2	92	39.3	8.9	74.4	21.8	122.81	67.54

Act.BW 94

SIRE NAC BATTLE CRY 4FBEE BATTLE CRY 282B
MI MS DALLAS 39D

Adj.WW -

DAM BLACK GOLD MS KRISTIN 73ESOUTHSEVEN MR ADONIS 96Z
MS BGS POLLED KRISTIN 20Y

Non-Diluter. 106M is a long bodied, smooth made Battle Cry daughter who looks to be setting down a good udder. 73E offers extra frame, performance, and a big square foot. We have only sold two sons of 73E, one of which we purchased half back in and have used for four years, and the other was a homozygous polled bull purchased by Forden Fairview Farms.



MAT. SIB



Observed Bred to KSL KILIPSO 25K on APR. 2/25 (SAFE). Exposed to Kilipso April 10-June 1.

5

BLACK GOLD MS WHISPER 184M

Fullblood - Polled - CLNO 184M - 1493693 - Jan 25, 2024

CE	BW	WW	YW	Milk	MCE	MWWT	STAY	API	TI
4.1	5	81	112.1	38.7	3.1	79.2	16.7	106.87	71.9

Act.BW 90

SIRE B BAR C KAYNE 17KSIBELLE POL GOLIATH 04E
B BAR C DEIDRA 109D

Adj.WW -

DAM BLACK GOLD MS WHISPER 257JSBV REPUTATION 707F
BLACK GOLD MSWHISPER 108B

Non-Diluter. 184M is an up-headed, sound made, attractive female with extra pigment throughout. We like her combination of smoothness and genuine width and muscle. Kayne injected more shear power, weaning and yearling performance, and testicle size than any bull we have used in recent years. 184M goes back to the Whisper cow family, which is responsible for 20+ milking descendants on our farm. 184M is the kind of female that has had admirers from Fullblood and Purebred breeders alike.



SERVICE SIRE



Observed Bred to KSL KILIPSO 25K on MAR. 29/25 (SAFE). Exposed to Kilipso April 10-June 1.



Non-Diluter. 91M is a definite feature in the sale and has been a favorite for a long time. A dark red, heavy pigmented heifer with extra length of body, pin width, and udder quality. She's still smooth through her shoulder and has an up-headed, flexible image while still being very docile. 8H is a past high seller through the Evolution going to Lindgren Simmentals, and is the front pasture kind with a very bold body shape and good udder. We are very impressed with our first two Vigilante calf crops. His first calf crop to sell averaged \$17 000 in our bull sale, and he has sired some of our top fullblood bulls in the pen this year. He consistently throws extra hair, dark red colour, length of body, all while moderating birth weight.

Observed Bred to KSL KILIPSO 25K on APR. 4/25 (SAFE). Exposed to Kilipso April 10-June 1.

BLACK GOLD MS DEIDRA 91M

6

Fullblood - Horned - CLNO 91M - 1493559 - Jan 13, 2024									
CE	BW	WW	YW	Milk	MCE	MWWT	STAY	API	TI
9.7	3.7	78.6	112.3	38.9	6.9	78.2	19.4	120.59	72.88

Act.BW 92 SIRE SAJ VIGILANTE 114K

Adj.WW - DAM BLACK GOLD MS DEIDRA 8H

HPR WILLIAM 117G
SAJ BETSY 64E
SOUTHSEVEN MR ADONIS 96Z
VIRGINIA DEIDRA 33D



BLACK GOLD MS WHISPER 95M

7

Fullblood - Polled - CLNO 95M - 1493562 - Jan 13, 2024

CE	BW	WW	YW	Milk	MCE	MWWT	STAY	API	TI
7	3.8	67	93.3	35.7	4.1	69.2	16.7	108	65.48

Act.BW 92

SIRE SBV REPUTATION 707F

CHERRY CREEK GLITZ 4D
SUNNY VALLEY RHEA 54C

Adj.WW -

DAM BLACK GOLD MS WHISPER 35C

SOUTHSEVEN MR ADONIS 96Z
CROSSROAD WHISPER 930W

Non-Diluter. Another dark red female that goes back to the Whisper cow family. 95M is soft made and deep bodied, similar to her moderate framed dam. 35C has had three sons through our bull sale, two daughters sold to Whitewood Ranch and Bouchard Livestock/Knox Farms, and two daughters retained in our herd. This past spring we sold our first set of Kilipso sons, where we had six sons all born off heifers average just over \$16,000.



Observed Bred to KSL KILIPSO 25K on MAR. 29/25 (SAFE). Exposed to Kilipso April 10-June 1.

BGS/LINDGREN MS HELENA 41M

8

Fullblood - Horned - CLNO 41M - 1471568 - Jan 6, 2024

CE	BW	WW	YW	Milk	MCE	MWWT	STAY	API	TI
8.6	4.1	69.2	93.8	35.1	4.9	69.7	14.8	98.72	63.37

Act.BW 94

SIRE SILVER LAKE JACKSON 24J

SIBELLE POL DARWIN 21F
MCM MISS FARRAH FF 10F

Adj.WW -

DAM NGDB HELENA 264K

NGDB 7G
NGDB HELENA 956G

Non-Diluter. 41M is a royally bred powerhouse with extra frame, length of body, and muscle while remaining sound on the move. Her dam is a past Friday Night Lights high seller for \$55 000, where she garnered a lot of attention from purebred and fullblood enthusiasts alike. Silver Lake Jackson has taken the fullblood industry by storm, with his first set of sons averaging over \$50 000 for Mark Land and Cattle, including a \$165 000 high selling son to Labatte/Oberle and Canadian Sires.



Observed Bred to KSL KILIPSO 25K on APR. 1/25 (SAFE). Exposed to Kilipso April 10-June 1.



Non-Diluter. We are awfully excited to feature the first ever fullblood heifer calf to sell in The Evolution. The Tatarin family are relentless in investing in the top end, best genetics they can access each year, which is definitely proven when touring their cattle. 127N is a big hiped, wide topped, bold ribbed heifer who is very soft through her flank and forerib. She has lots of thick hair, is very docile, and moves out with plenty of ease off both ends. We have sold three 23Z daughters through the Evolution, where they have averaged over \$30 000. 23Z had longevity, foot, and udder quality on her side as she was a great producing cow for thirteen years. We are impressed with the Kilipso calves and their ability to be born small and perform with the rest of the pen, and we are anxious to get some daughters milking in 2026.

RAFTER 4T MS ZAVIERA 127N

9

Fullblood - Polled - RAFT 127N - 1520471 - Jan 11, 2025									
CE	BW	WW	YW	Milk	MCE	MWWT	STAY	API	TI
12.3	3.2	64.5	89.6	37.3	7.5	69.5	17.3	117.68	66.83

Act.BW **91** SIRE **KSL KILIPSO 25K**

Adj.WW **682** DAM **BLACK GOLD/RUST ZAVIERA 127L** KEET'S FERROUS 26F
KSL SWEET CHINA 27H
SOUTHSEVEN MR ADONIS 96Z
WCC WELLS' ZAVIERA 23Z





AI Bred to WEPPLERS EIGHT BALL 168M on MAR. 24/25 (SAFE). Exposed to Eight Ball from April 10-June 1.

21M combines some of the top red cows in the breed, and is one we are excited to feature in this year's offering. Nothing really needs to be said about the Darlin' and Walk the Line influence on the breed, as they are nothing short of elite in terms of red genetics. Brooke 68Z has been an incredible producer; from Springcreek, to Maxwells and Sun Rise, and now to KT, she is a timeless female with an impressive ROI for each of those producers. 21M is a very long bodied, long hipped female with an attractive front one third and looks to be setting down a near perfect udder. Attributes that made her a competitive junior and 4-H heifer for Finn Pratte this past spring and summer. She is bred early to Eight Ball, who was purchased for his unique look, structure, and body, while remaining light at birth and smooth in his makeup.

BCS/LINDGREN **MS BROOKE** 21M

Purebred - Homo Polled - CLNO 21M - 1471389 - Jan 4, 2024

10

CE	BW	WW	YW	Milk	MCE	MWWT	STAY	API	TI
9.8	0.7	80.8	113.5	34	5.9	74.4	16.5	113.48	73.83

Act.BW **84**

SIRE **MADER WALK THE LINE 92J**

Adj.WW -

DAM **SPRINGCREEK BROOKE 68Z**

MADER WALK THIS WAY 224B
IRCC DARLIN' 613D

KOP CROSBY 137W
SPRINGCREEK BROOKE 11W



DAM



SERVICE SIRE



AI Bred to KSR LEGACY 5IL on APR. 3/25 (SAFE). Exposed to Wepplers Eight Ball 168M April 10-June 1.



AI Bred to KSR LEGACY 5IL on MAR. 26/25 (SAFE). Exposed to RWR Roller 75M April 10-June 1.

11

BLACK GOLD DESTINY'S CHILD 170M

Purebred - Homo Polled - CLNO 170M - 1493682 - Jan 23, 2024

CE	BW	WW	YW	Milk	MCE	MWWT	STAY	API	TI
9	3.2	87.6	127.5	24.8	2.4	68.6	17.2	125.09	79.64

Act.BW 88

Adj.WW -

SIRE

DAM

WFL MOUNTAIN VIEW 4J

BLACK GOLD DESTINY'S CHILD 14J

KWA RED ITALIAN 122E
WFL 9072 MS RED DOLL 913G

KWA ROOSEVELT 63F
BLACK GOLD DESTINY'S CHILD150D



There are few things guaranteed in this life, but Mountain View siring the dark red, performance driven, consistent kind has become one of them around our place. 170M is a typical Mountain View daughter with a bold muscle and body shape, and looks to be setting down a great udder. We have bred 14J this way each of her three years in production, and have a milking full sister and a high quality heifer calf in our replacement pen. When we first purchased Legacy, we couldn't wait to breed him to our Mountain View daughters, to continue to produce the dark red, good numbered kind with an impressive phenotype.

12

BLACK GOLD MS FLIRTIN 263M

Purebred - Homo Polled - CLNO 263M - 1494377 - Feb 12, 2024

CE	BW	WW	YW	Milk	MCE	MWWT	STAY	API	TI
12.8	1.5	87	122.4	22.7	3.1	66.2	12.5	120.11	80.18

Act.BW 78

Adj.WW -

SIRE

DAM

WFL MOUNTAIN VIEW 4J

BLACK GOLD MS FLIRTIN 197K

KWA RED ITALIAN 122E
WFL 9072 MS RED DOLL 913G

WLB TOP TIER 456G
RF CERTAINLY FLIRTIN 532C



A dark red heifer here with a neat pedigree and attractive look. 197K is a Top Tier daughter, out of our 532C donor who is one of the biggest bodied, easiest doing donors that we have. 197K replicates her dams "cowvy" image, and has a very good udder underneath her. 263M is a younger heifer but one that looks to be setting down the kind of udder and foot quality that we would expect from this cow family. A dark red, blazed face calf inside of 263M is of high probability, and could just be the ticket to a quick ROI.

BLACK GOLD MS LINNETTE 57M

14

Purebred - Homo Polled - CLNO 57M - 1472146 - Jan 8, 2024

CE	BW	WW	YW	Milk	MCE	MWWT	STAY	API	TI
8.8	3.4	82.9	125.3	16.9	3.5	58.4	14.8	111.24	72.63

Act.BW 88

SIRE WRC BROADWAY 6520

SVS CAPTAIN MORGAN 11Z
RF CERTAINLY FLIRTIN 202Z

Adj.WW -

DAM BLACK GOLD LINNETTE 80F

WFL WESTCOTT 24C
BLACKSAND LINNETTE 942W

An absolute powerhouse in the offering and one of the easiest doing females on offer. Body, power, and fleshing ability is consistent in this cow family and that is pretty obvious in 57M. 942W was our pick and one of the high sellers out of the legendary Blacksand dispersal, and is a cow we wish we still had around. Another early service to the new and exciting Legacy, 57M should be one to watch on sale day.



AI Bred to KSR LEGACY 51L on APR. 2/25 (SAFE). Exposed to RWR Roller 75M April 10-June 1.

RNR MISS RED 29M

15

Purebred - Homo Polled - RNR 29M - 1477512 - Feb 4, 2024

CE	BW	WW	YW	Milk	MCE	MWWT	STAY	API	TI
5.9	4.1	87	124.5	17.7	1.5	61.2	9.6	96.76	73.4

Act.BW 85

SIRE WF EVIDENCE 89K

LCDR WITNESS 541C
CMS SODA POP 410B

Adj.WW -

DAM BLACK GOLD/RUST MS RED 6J

LRX RED ALLIANCE 236G
RUST MISS 501C

Very similar "cowwy" image as 57M, 29M is a long spined, deep ribbed heifer with extra foot size. 501C was a big framed, power cow with an awesome foot, and has daughters working for both Double RN and Twin Springs Farm. They all carry the same ability to put on weight with little resources, which has proven to be so sought after, especially after the few drier years that we have been witnessing. 29M carries an early and exciting service to the blazed face, hetero black Southside.



AI Bred to W2 SOUTHSIDE 2K on MAR. 24/25 (SAFE). No Exposure.

BLACK GOLD MS HAYLEIGH 304L

16

Purebred - Homo Polled - Homo Black - CLNO 304L - 1435747 - Mar 16, 2023

CE	BW	WW	YW	Milk	MCE	MWWT	STAY	API	TI
11.9	2.8	79.2	117.8	18.3	6.7	57.9	14.4	126.29	77.13

Act.BW 90

SIRE KCCI COUNTERTIME 872H

ES RIGHT TIME FA110-4
KCCI HAVANA 83E

Adj.WW -

DAM KDP MISS HOYA HAYLEIGH

LLSF PAYS TO BELIEVE ZUI94
K-LER/RC MISS HOYA SAXA



FULL BROTHER



FULL BROTHER

16

Preg Checked Bred around APRIL 25 to either LFE CABARET 847J or KWA HOLYFIELD 96J (SAFE)

With it being the fifth edition of The Evolution, we knew we wanted to bring something special and exciting. 304L has been a favorite of ours since she was a calf, but being just a March born our options of marketing her seemed limited. That probably turned out to be a blessing as she has done nothing but get better, and has developed into one of the most impressive two year olds we have had. 304L is an extremely long bodied, long hipped cow with an attractive presence up front and high neck attachment. She's big pinned from behind, wide topped, and carries her width all the way to the ground on a big, square foot. Her combination of an outcross yet dependable pedigree, solid EPD profile, and near perfect udder earned her a spot in embryo production this past summer, where she froze 27 Grade A embryos on one IVF aspiration. She is currently raising a powerful, stout made, early maturing Walk This Way bull calf with an impressive birth-weaning performance. We have sold two full brothers to 304L who have averaged \$24 000 selling to Jaydawn Farms and Kathol Simmental Ranch, and have two more full brothers that are at the top of our pen currently. We would like to continue Hayleigh's legacy with daughters like 304L and continue to build around her kind. Our goal is to keep 304L and her calf together throughout the fall with the intention of taking them on the show road. Here is a chance to join in on the fun, and buy into a young donor who has endless opportunities and mating possibilities.

Selling 2/3 interest no possession. Buyer will receive 50% of natural calves selling price in the future.



AI Bred to **ULTRA TOKYO ROSE 17M** on **MAR. 30/25 (SAFE)**. Exposed to **RWR Roller 75M** from April 10-June 1.

We thought it was only fitting to bring another Quantum Leap x Hayleigh back to The Evolution, as this is the mating that has made our sale so exciting the last few years. We now have a few full sisters in production, and they have turned into good uddered cows with the kind of look and body shape that we are after. Some of the more memorable full sisters have been the \$73 000 Hayleigh that was purchased by KT Ranches in 2022 and went undefeated in her division at four shows, and the \$47 500 Hayleigh purchased by Ivery Downs and Greenwood in 2024, that went on to be the Reserve Senior Heifer Calf at Agribition. KT capitalized on embryo production success, and sold five daughters off her last fall to average an impressive \$24 000, and embryos as high as \$3 250. 65M is typical of this mating with an attractive look, sound structure, good udder, and soft, deep ribbed image.

BLACK GOLD **MS HAYLEIGH** 65M

Purebred - Homo Polled - Homo Black - CLNO 65M - 1472161 - Jan 9, 2024

CE	BW	WW	YW	Milk	MCE	MWWT	STAY	API	TI
12.3	0.5	70.8	96.9	16.2	5.9	51.6	11	115.65	72.52

17

Act.BW **90**

SIRE **HPF QUANTUM LEAP Z952**

Adj.WW -

DAM **KDP MISS HOYA HAYLEIGH**

HTP/SVF DURACELL T52
RP/MP RIGHT TO LOVE 015U
LLSF PAYS TO BELIEVE ZU194
K-LER/RC MISS HOYA SAXA



FULL SISTER



FULL SISTER



Once again we are offering two direct daughters of the baldy powerhouse Soda 425B. Soda kickstarted our black program with quality and has left us so many daughters that have turned into some of our top black cows. In the next lots, five of the next bred heifer lots and four of the heifer calf lots are descendants of HPF Cream Soda Y010. This year, we are offering two Relentless daughters that would be full sisters to the white faced sisters that sold to Jorgensen and the Eaton family in our first Evolution Sales. Not only did those females have successful show careers, but turned into front pasture donors who each have a daughter in this sale. 295M is one of our favorites to date with a very attractive skull and ear set, and blends back into a very soft rib shape and struts around on a flexible set of feet and legs. 285M offers extra hair, pin width, and length of body with a “Soda” presence up front.

AI Bred to ULTRA TOKYO ROSE 17M on APR. 1/25 (SAFE). Exposed to RWR Roller 75M from April 10-June 1.

BLACK GOLD MS SODA POP 295M

18

Purebred - Hetero Polled - Homo Black - CLNO 295M - 1498657 - Feb 21, 2024

CE	BW	WW	YW	Milk	MCE	MWWT	STAY	API	TI
6.9	2.6	76.1	104.7	18.3	0.9	56.4	12.4	115.39	75.23

Act.BW 88

SIRE W/C RELENTLESS 32C

Adj.WW -

DAM CMS SODA POP 425B

YARDLEY UTAH Y361
MISS WERNING KP 8543U

DRAKE POKER FACE 2X
HPF CREAM SODA Y010



BLACK GOLD MS SODA POP 285M

19

Purebred - Hetero Polled - Homo Black - CLNO 285M - 1498649 - Feb 18, 2024

CE	BW	WW	YW	Milk	MCE	MWWT	STAY	API	TI
7.9	2.3	70.5	98.8	18.3	1.5	53.6	11	112.45	72.62

Act.BW 97

SIRE W/C RELENTLESS 32C

YARDLEY UTAH Y361
MISS WERNING KP 8543U

Adj.WW -

DAM CMS SODA POP 425B

DRAKE POKER FACE 2X
HPF CREAM SODA Y010



DAM



SERVICE SIRE



AI Bred to ULTRA TOKYO ROSE 17M on MAR. 28/25 (SAFE). Exposed to RWR Roller 75M April 10-June





20

6M has been a favorite for some time, and was slotted to sell last year as a calf but specifically held back to highlight our bred heifer offering. This blazed face Cabaret daughter is hard to put a hole in and checks a lot of boxes for us. We like her look and presence, she's big ribbed and stout made, and is heavy structured while stepping down on a very solid foot. 160F is our favorite milking Soda 425B daughter and a spitting image of her dam. She was only flushed once, where she produced 36 Grade A embryos. We were eager to jump on a semen pack from the \$72 500 Tokyo Rose purchased by Rancier and Canadian Sires, due to his combination of phenotype, cow family, and elite EPD profile. 6M is a definite feature to sell on October 9th!

AI Bred to ULTRA TOKYO ROSE 17M on APR. 3/25 (SAFE). Exposed to RWR Roller 75M from April 10 - June 1.

20

BLACK GOLD MS SODA POP 6M

Purebred - Homo Polled - Homo Black - CLNO 6M - 1471370 - Jan 2, 2024

CE	BW	WW	YW	Milk	MCE	MWWT	STAY	API	TI
8.6	2.8	90.2	137.4	12.4	4.7	57.5	17	130.77	82.15

Act.BW 88

Adj.WW -

SIRE LFE CABARET 847J

DAM BLACK GOLD MS SODA POP 160F

RF CALIBER 014G

LFE BS KAT 671E

PROFIT

CMS SODA POP 425B



21 BLACK GOLD MS SODA POP 100M

3/4 Purebred - Homo Polled - Hetero Black - CLNO 100M - 1520453 - Jan 14, 2024

CE	BW	WW	YW	Milk	MCE	MWWT	STAY	API	TI
10.1	2.7	89.5	132.8	22.4	1.3	67.1	14.5	117.96	79.90

Act.BW 87

SIRE WFL MOUNTAIN VIEW 4J

KWA RED ITALIAN 122E
WFL 9072 MS RED DOLL 913G

Adj.WW -

DAM BLACK GOLD MS SODA POP 285J

74-51 SUDDEN LOOK 1023
CMS SODA POP 425B

100M is a moderate framed, long bodied, sound made Mountain View daughter. 285J is a halfblood cow that we quite like, and is one of the reasons we will continue to cross Angus and Simmental, to produce more of her easy doing, huge bodied, good uddered kind. 100M has a maternal sister that is amongst the top of our heifer calf offering, and is bred up early to the exciting red Hannibal son, Wepplers Eight Ball.



DAM



Observed Bred to Wepplers Eight Ball 168M on APR. 8/25 (SAFE). Exposed to Eight Ball April 10-June 1.

22 BGS/SBV/WF MS SODA 147M

Purebred - Hetero Polled - Hetero Black - CLNO 147M - 1510921 - Jan 20, 2024

CE	BW	WW	YW	Milk	MCE	MWWT	STAY	API	TI
10.9	2.4	83.3	132	20.8	6.2	62.5	16.9	132.78	80.29

Act.BW 82

SIRE LFE CABARET 847J

RF CALIBER 014G
LFE BS KAT 671E

Adj.WW -

DAM BLACK GOLD MS SODA POP 200H

CROSSROAD BLACK REBEL 4F
CMS SODA POP 425B

Mating Cabaret to several of our Soda Pop 425B daughters was a no brainer, as these genetics have been as consistent in quality as anything around our place. 147M is a big hiped, stout made, easy doing female who looks to be setting down a good udder. 200H is a typical Soda daughter and quickly made her way into our donor pen, after we sold part of her to Westman Farms and Mark Land and Cattle. A full brother to 147M was one of our heavyweights this past spring, selling to Rusylvia and JK Bar for \$30 000, and more full brothers are at the top of our pen again this year.



FULL SIB



DAM



AI Bred to ULTRA TOKYO ROSE 17M on MAR. 31/25 (SAFE). Exposed to KSR Legacy 51L April 10-June 1.



54M's impressive body shape, softness, and look has made her a standout at every age and she continues to impress. Similar pedigreed to 147M, she carries the same powerful hip and fleshing ability. This past spring, 50 sons of Cabaret sold between Lewis's, KT, and ourselves, to gross over \$1 Million and average just over \$21 000. His ability to sire consistent quality on a wide variety of cows is evident, and we cannot wait to continue to see the impact he has on our cowherd in the future. We have been very impressed with the foot and udder quality, muscle, and look on our Countertime progeny, all while using him on heifers with plenty of success.

AI Bred to KCCI COUNTERTIME 872H on MAR. 30/25 (SAFE). Exposed to Weplers Eight Ball 168M from April 10-June 1.

BLACK GOLD MS CREAM SODA 54M

23

Purebred - Hetero Polled - Homo Black - CLNO 54M - 1472120 - Jan 8, 2024

CE	BW	WW	YW	Milk	MCE	MWWT	STAY	API	TI
10.1	3.7	87.1	133	16.7	5.4	60.3	13.2	122.12	80.07

Act.BW 93

SIRE LFE CABARET 847J

RF CALIBER 014G
LFE BS KAT 67IE

Adj.WW -

DAM BLACK GOLD MS CREAM SODA 153G

WS REVIVAL
HPF CREAM SODA Y010



GRANDAM



MATERNAL SISTER

24

BGS/LINDGREN MS SODA 118M

Purebred - Homo Polled - Hetero Black - CLNO 118M - 1474830 - Jan 16, 2024

CE	BW	WW	YW	Milk	MCE	MWWT	STAY	API	TI
7.5	4.7	84.1	125.7	24.3	4.2	66.4	17.1	106.84	69.74

Act.BW **90****SIRE KWA HOLYFIELD 96J**BLCC BLACK MARKET 19G
KWA MS RAVEN 141E

Adj.WW -

DAM BLACK GOLD MS SODA 52JSVS DYNASTY 915G
BLACK GOLD MS SODA 111F

118M is the natural calf off our 52J donor owned with Lindgren Simmentals. Last year we featured her first set of four ET progeny, where they averaged just over \$60 000. 118M is a smooth made, deep ribbed, docile female with a big square foot. Her and a few of our other sale heifers will be possibly the only females to sell this fall with a service to the new and exciting dark red stud, KSR Legacy. Legacy will sire the largest calf crop we have ever had born on our purebred side this coming calving season.



MAT SIB



DAM



Observed Bred to KSR LEGACY 51L on APR. 15/25 (SAFE). Exposed to Legacy from April 10-June 1.





AI Bred to ULTRA TOKYO ROSE 17M on MAR. 27/25 (SAFE). Exposed to KSR Legacy 51L April 10-June 1.

BLACK GOLD/LINDGREN DONNA 275M

Purebred - Homo Polled - Homo Black- CLNO 275M - 1510983 - Feb 15, 2024

25

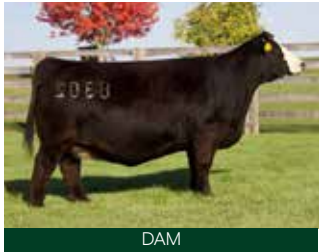
CE	BW	WW	YW	Milk	MCE	MWWT	STAY	API	TI
11.9	0.7	83.6	130.4	20.3	5.7	62.1	12.5	123.46	80.29

Act.BW 90 SIRE KCCI COUNTERTIME 872H

Adj.WW - DAM SANDEEN DONNA 8302

ES RIGHT TIME FA110-4
KCCI HAVANA 83E
RUBY SWC BATTLE CRY 431B
SANDEEN DONNA 5120

No question one of the most exciting and highest quality lots in the sale. There was a lot of discussion between us and Elliott on if we would offer 275M for sale or not, as we feel like her generating potential is as good as anything we have sold. 275M is the only Sandeen Donna 8302 daughter that has ever been offered for sale in Canada, and the only one of this mating. 8302 has quickly become one of the best and most prolific donors in the breed, as she is the \$524 000 US valued donor who is approaching \$2 Million in revenue sales, with four six-digit daughters, and a high of \$210 000. 275M is a big bodied, soft ribbed, smooth made, attractive female who looks to be setting down a perfect udder. The kind of female that is fun to look at, we feel 275M could definitely hit the show ring at any point in her life. With an early service to Tokyo Rose, the option is there to turn her into a donor in a short few months, and take advantage of her maternal qualities that could boost any program in the right direction.



DAM



\$185,000 8302 DAUGHTER



\$200,000 8302 DAUGHTER



\$210,000 8302 DAUGHTER

26 BLACK GOLD/cw MS NIKKI 66M

Purebred - Homo Polled - Hetero Black - CLNO 66M - 1472162 - Jan 9, 2024

CE	BW	WW	YW	Milk	MCE	MWWT	STAY	API	TI
9.7	0.9	77.4	121.2	24.9	6.2	63.6	15.9	117.63	73.55

Act.BW 84 SIRE KWA HOLYFIELD 96J

Adj.WW - DAM SVS BLK NIKKI 801F

BLCC BLACK MARKET 19G
KWA MS RAVEN 141E

MADER WALK THIS WAY 224B
SVS BLK NIKKI 506C

A smooth made Holyfield daughter that steps down on a square foot and looks to be setting down a good udder. 66M is a daughter of our Nikki daughter owned with Greenwood, that was purchased out of the Border City Sale from Sunny Valley. Nikki progeny are consistently performance driven, docile, and have the right kind of body and muscle shape. Holyfield daughters were calved out for the first time in 2025, and they appear to have very good udders, good feet, and look to be the kind with longevity in their favour.



MAT. SIB



AI Bred to Ultra Tokyo Rose 17M on APR. 4/25 (SAFE). Exposed to Wepplers Eight Ball 168M April 10-Jun 1.

27 BLACK GOLD MS WONDER 22M

Purebred - Homo Polled - Hetero Black - CLNO 22M - 1471539 - Jan 4, 2024

CE	BW	WW	YW	Milk	MCE	MWWT	STAY	API	TI
13.5	1.5	78.7	114.7	17	7.1	56.4	14.8	118.99	73.31

Act.BW 88 SIRE SRH HANNIBAL 5H

Adj.WW - DAM BLACK GOLD MS WONDER 41K

REMINGTON LOCK N LOAD 54U
SRH PRECIOUS 73A

SVS DYNASTY 915G
BLACK GOLD MS WONDER 25G

A stout made, deep bodied, deep flanked Hannibal daughter. Hannibal progeny have consistently impressed us with their ability to come small at birth and grow rapidly with quality throughout. 41K is the moderate, easy doing kind very similar to her blazed face daughter. 22M combines some powerful red genetics, with WFL Red Sage 506C and RF Flirtin for Certain 532C in her pedigree.



SERVICE SIRE



Observed Bred to RWR ROLLER 75M on APR. 9/25 (SAFE). Exposed to RWR Roller 75M April 10-June 1.

GREENWOOD FOUR MILE 47J

28

JJP 47J - 2220889 - Feb 9, 2021

CE	BW	WW	YW	Milk	MCE	MARB	FAT	CWT	REA
8.0	1.9	53	98	26	10.0	0.01	0.031	31	0.47

Act.BW 86

Adj.WW 884

Adj.YW 1470

SIRE U-2 COALITION 206C

DAM RRD TIBBIE 28Z

HF SYNDICATE 213Z
U2 ERELITE 109Z

S A V HERITAGE 6295
RRD TIBBIE 9W

28

An incredible opportunity to acquire a proven breeding phenom. Four Mile was the 2023 Canadian Western Agribition Champion Angus Bull and has since gone on to prove his dominance by siring highly desirable progeny. He's a massive, powerful individual who continues to impress; anyone who has seen him in person agrees he looks even better today than the day he stepped into the show ring. He moves freely, covers cows with ease, and stops you in your tracks with his stunning side profile. When you get behind him, his sheer thickness, muscle shape, and overall mass are unmatched, especially for a bull that still offers great calving ease. He's gentle, big-nuttied, strong-footed, and incredibly easy keeping.

Ter-Ron Farms is thrilled with the job he's done, and his daughters are the kind that leave a lasting impact. Both our programs are in the same boat with too much of his influence to keep him fully utilized. Opportunities to purchase a proven herd sire of this caliber, in the prime of his life, are few and far between. **We are selling 100% walking rights and 50% semen interest.**



FOUR MILE



DAM



DAUGHTER



\$40,000 SON SOLD TO PEAK DOT



\$23,000 SON SOLD TO MURRAY RANCHES

29 TER-RON JEMINA 125M

HFX 125M - 2378194 - Jan 28, 2024

CE	BW	WW	YW	Milk	MCE	MARB	FAT	CWT	REA
11.0	-0.4	49	84	26	11.0	-	-	-	-

Act.BW 64

SIRE

GREENWOOD FOUR MILE 47J

Adj.WW 591

DAM

TER-RON JEMINA 11J

Adj.YW -

U-2 COALITION 206C
RRD TIBBIE 28Z

BAR-E-L STAMINA 112F
W SUNRISE JEMINA 259G

125M is an impressive cow prospect with a stacked pedigree and the look to match. If you appreciate tanky, easy-fleshing females that stop you in your tracks, she deserves a serious look. She's developing a picture-perfect udder, has a beautiful head and ear set, and carries herself with that broody, maternal presence we all aim for. Her full brother was sold to Bells Hill Angus for \$14,500. She's Bred to the exclusive \$220,000 Greenwood Revenue, a rare opportunity to get in on his very first calf crop with a female that has all the makings of a future donor.



DAM



SERVICE SIRE



AI Bred to GREENWOOD REVENUE 175M on APR. 7/25 (SAFE). Due Jan. 15/2026.

30 TER-RON MISS 27M

HFX 27M - 2378137 - Jan 9, 2024

CE	BW	WW	YW	Milk	MCE	MARB	FAT	CWT	REA
2.0	3.8	55	97	20	8.0	-	-	-	-

Act.BW 82

SIRE

GREENWOOD FOUR MILE 47J

Adj.WW 601

DAM

RUSYLVA MISS 52H

Adj.YW -

U-2 COALITION 206C
RRD TIBBIE 28Z

BROOKING BANK NOTE 4040
MISS RUSYLVA 19Y

A bigger-framed Four Mile daughter that checks all the boxes for maternal quality. She's broody, powerful, and exactly what you'd expect when you study the maternal strength in her pedigree featuring 28Z, Coalition, Banknote, and Density. She stands on an excellent set of feet and appears to be developing a gorgeous udder. This is the kind of female built to raise the right kind, year after year. Her service sire is an exciting young bull to watch in the Ter-Ron program - a mating with serious potential.



DAM



AI Bred to SVR FLAT TOP 329L on MAY 13/25 (SAFE). Due Feb. 20/2026.



AI Bred to TOPP STANDOUT 1072 on APR. 8/25 (SAFE). Due Jan. 16/2026.



AI Bred to Belvin Modelo 4032 / Greenwood High Class 87H on MAY 30/25 (SAFE). Due Mar. 9/26.

31

GREENWOOD BEAUTY 176M

JJP 176M - 2377918 - Jan 11, 2024

CE	BW	WW	YW	Milk	MCE	MARB	FAT	CWT	REA
9.0	1.4	52	89	25	13.0	0.23	0.027	19	0.35

Act.BW 65

Adj.WW 575

Adj.YW -

SIRE COVEY HILL UNBELIEVABLE 4J

DAM GREENWOOD BEAUTY JJP 55E

COLEMAN BRAVO 6313
U2 ROSEBUD 1F

BROOKING BANK NOTE 4040
TLA BEAUTY 6R



MAT. SISTER

A pair of Beauty sisters that scream cow power. We love our 55E daughters, and 176M might be one of the best ever offered. If you like moderate, awesome bodied females that look functional and low input, she's your kind. Her full sister; 173M, is no slouch either - a true reflection of the consistency in this flush. Maternally packed pedigree and backed by one of the most proven cows on the place. You will notice 173M has 2 different service sires; we will cover costs of having the calf parent verified if you wish.

32

GREENWOOD BEAUTY 173M

JJP 173M - 2377919 - Jan 10, 2024

CE	BW	WW	YW	Milk	MCE	MARB	FAT	CWT	REA
-2.0	3.9	64	107	27	7.0	0.51	-0.021	43	0.47

Act.BW 76

Adj.WW 586

Adj.YW -

SIRE COVEY HILL UNBELIEVABLE 4J

DAM GREENWOOD BEAUTY JJP 55E

COLEMAN BRAVO 6313
U2 ROSEBUD 1F

BROOKING BANK NOTE 4040
TLA BEAUTY 6R



MAT. SISTER



DAM



A strikingly designed Countess female backed by the legendary Countess 7077. She's good-footed, long-fronted, and sharp in her lines, with a beautiful head and exciting presence. She's sound-moving and developing an ideal udder, 71M carries herself with the kind of balance and quality that points to donor potential. The Countess cow family continues to grow in influence and marketability - and this female is no exception. Safe to a valuable service and carrying a ticket that's built for ROI. Here's a strong investment with a big future.

AI Bred to TOPP STANDOUT 1072 on MAR. 24/25 (SAFE). Due Jan. 1/2026.

33

GREENWOOD COUNTESS 71M

JJP 71M - 2381315 - Feb 8, 2024

CE	BW	WW	YW	Milk	MCE	MARB	FAT	CWT	REA
-1.0	3.6	71	118	23	3.0	0.56	0.002	49	0.52

Act.BW **90**

SIRE ELLINGSON PROFOUND 8155

S POWERPOINT WS 5503
EA ROSETTA 6157

Adj.WW **629**

DAM BROOKING COUNTESS 7077

BAR-E-L NATURAL LAW 52Y
BROOKING COUNTESS 239

Adj.YW -





AI Bred to GREENWOOD REVENUE 175M on APR. 1/25 (SAFE). Due Jan. 9/2026.

34

One of the most intriguing females ever born at Greenwood. She brings a rare combination of mass, thickness, bone, and sheer power all in a striking, phenotypically elite package. Her deceased dam was a \$90,000 feature in the 2022 Conley Fall Female Sale. 33M has been a favourite from the start and only gets more impressive as she matures into a brood cow. Her udder is developing flawlessly, her fleshing ability is ideal, and she carries herself with the presence of a future donor. Her service to the \$220,000 Exclusive Revenue makes this a truly rare mating. Combine that with her outcross pedigree and balanced data, and she becomes a one-of-a-kind opportunity in Canada, the kind that can anchor a program. **We are retaining 1 successful flush at buyers convenience and our expense.**

34

GREENWOOD SANDY 33M

JJP 33M - 2378897 - Jan 9, 2024

CE	BW	WW	YW	Milk	MCE	MARB	FAT	CWT	REA
4.0	1.6	70	113	28	9.0	0.65	0.006	40	0.72

Act.BW 88
Adj.WW 674
Adj.YW -

SIRE CONNEALY CRAFTSMAN
DAM CONLEY SANDY 7350

SITZ RESILIENT 10208
BLACK CATHY OF CONANGA 8521
E&B CONFEDERATE 507
CONLEY S SIS SANDY 4350



SERVICE SIRE



DAM



AI Bred to BELVIN MODELO 4032 on MAY 17/25 (SAFE). DUE FEB. 24, 2026.



SERVICE SIRE

35

GREENWOOD TIBBIE 23M

JJP 23M - 2371821 - Jan 5, 2024

CE	BW	WW	YW	Milk	MCE	MARB	FAT	CWT	REA
3.0	3.0	62	119	24	8.0	0.30	0.032	47	0.31

Act.BW 81

SIRE S A V PANTHER 1906

Adj.WW 624

DAM GREENWOOD HF TIBBIE JJP 16F

Adj.YW -

S A V QUARTERBACK 7933
S A V BLACKCAP MAY 6644

HA COWBOY UP 5405C
HF TIBBIE 22C



GRANDAM - 22C



MATERNAL SISTER

A big topped, stout female built with performance in mind. If you're looking to raise heavy, high-performing bull calves, she's the kind to get it done. Her granddam is the potent HAMI 22C donor, and that influence shows through. Her maternal sister was a past \$19,000 feature heifer calf to Double RN. She's good-footed, strong-uddered, and unique in her pedigree. Bred to a new sire from our pick of the 2025 Belvin Angus Bull Sale - a mating with serious upside.



AI Bred to TOPP STANDOUT 1072 on APR. 16/25 (SAFE). Due Jan. 24, 2026.



AI Bred to BELVIN MODELO 4032 on MAY 18/25 (SAFE). Due Feb. 25, 2026.

36

GREENWOOD ENVIOUS BLACKBIRD 60M

JJP 60M - 2371838 - Jan 2, 2024

CE	BW	WW	YW	Milk	MCE	MARB	FAT	CWT	REA
6.0	1.8	43	76	17	10.0	0.21	-0.006	27	0.30

Act.BW 64

Adj.WW 532

Adj.YW -

SIRE

DAM

TER-RON KNIFEPOINT 99K

GREENWOOD ENVIOUS BLACKBIRD70H

BROOKING NATIONAL 0144
HF TIBBIE 201F

BROOKING FIREBRAND 6068
MICH ENVIOUS BLACKBIRD 1424

A cool-looking Knifepoint daughter with a striking head and neck attachment that blends into a bold, deep middle. She's got the look and presence you'd expect, coming from the Envious Blackbird cow family. Maternal sisters have sold to Packet Ag. Ventures Inc. and AJS Angus. Her dam is a maternal sister to the dam of Revenue and several other influential cattle and high sellers in our program. Early bred to Standout a service with serious return potential.



SIRE



MAT. SISTER

37

GREENWOOD TIBBIE 70M

JJP 70M - 2371846 - Feb 7, 2024

CE	BW	WW	YW	Milk	MCE	MARB	FAT	CWT	REA
-1.0	4.1	55	99	18	3.0	0.45	0.028	35	0.13

Act.BW 82

Adj.WW 635

Adj.YW -

SIRE

DAM

TER-RON KNIFEPOINT 99K

HF TIBBIE 134E

BROOKING NATIONAL 0144
HF TIBBIE 201F

MUSGRAVE BIG SKY
HF TIBBIE 101Z



MATERNAL SISTER SOLD TO
RIVERFRONT AND MURRAY STANKEY 2024 SALE

A high-end Knifepoint daughter that checks a lot of the boxes; eye appeal, structural quality, and cow family behind her. Like her sisters, she's sound-footed, feminine through her front end, and developing a beautiful udder. 70M is the kind you won't get tired of looking at, and she comes from a great cow family. Her dam has been a standout producer, with daughters selling to IRCC/Irvin'side, Perrot Cattle Co., and as a feature in last year's sale to Riverfront and Tri-S. Backed by pedigree and proven production.

38

GREENWOOD BEAUTY 80M

JJP 80M - 2371854 - Mar 3, 2024

CE	BW	WW	YW	Milk	MCE	MARB	FAT	CWT	REA
-1.0	3.1	56	101	30	5.0	0.03	-0.004	42	0.76

Act.BW 82
 Adj.WW 683
 Adj.YW -

SIRE **TER-RON KNIFEPOINT 99K**
 DAM **GREENWOOD BEAUTY JJP 35H**

BROOKING NATIONAL 0144
 HF TIBBIE 201F
 DMM INTERNATIONAL 54D
 GREENWOOD BEAUTY JJP 55E

An elegant Knife Point daughter that keeps getting better with age. She's long-bodied, square in her hip, and structurally correct, with a smooth shoulder, extended front, and that eye-catching look through her head and neck. The kind I'd circle as a potential show cow prospect if she wasn't in the sale pen. Her dam is a big, powerful cow with added mass, huge feet, and a picture-perfect udder. Early bred to Standout, a service that could easily return the investment on year one. Built right, bred right, and backed by cow family.



GRANDAM



MAT. SISTER



AI Bred to TOPP STANDOUT 1072 on APR. 6/25 (SAFE). Due Jan. 14, 2026.

39

BLACK GOLD CAYS BEAUTY 101M

CLNO 101M - PENDING - JAN 15, 2024

CE	BW	WW	YW	Milk	MCE	MARB	FAT	CWT	REA
5.0	1.8	66	113	25	7.0	0.11	-.009	36	0.55

Act.BW 84
 Adj.WW -
 Adj.YW -

SIRE **COLEMAN GLACIER 041**
 DAM **RUST MS BEAUTY 0410H**

S A V RENOWN 3439
 COLEMAN DONNA 439
 BROOKING FIREBRAND 6068
 BROOKING BEAUTY 8187

Our lone Angus heifer of the offering, but a female who offers extra growth, length of spine, and look. She is the result of a pregnant recipient purchase from Canadian Donors sale, alongside our friends at Cay's Cattle. Rust Ms Beauty 0410 is none other than a full sister to the past Supreme Champion at Farmfair, Forged of Fire that is part of the powerful herd bull arsenal at KT Ranches. A ¾ sister to 101M was a feature heifer calf in Brooking's sale last fall, selling to Canadian Donors and ZWT for \$32 000. 101M looks to be setting down a great udder, is big and square footed at the ground, and bred up early to the intriguing Hill Valley Reckoning.



DAM



3/4 SISTER



AI Bred to HILL VALLEY RECKONING 931 on APR. 15/25 (SAFE) No exposure.



AI Bred to BELVIN MODELO 4032 on MAY 8/25 (SAFE). DUE Feb. 15, 2026.



AI Bred to TOPP STANDOUT 1072 on APR. 20/25 (SAFE). Due Jan. 28, 2026.

40

GREENWOOD LADY MAY 78M

JJP 78M - 2371853 - Feb 21, 2024

CE	BW	VW	YW	Milk	MCE	MARB	FAT	CWT	REA
9.0	1.4	60	113	20	2.0	0.66	0.026	57	0.67

Act.BW 72

Adj.WW 681

Adj.YW -

SIRE BROOKING SOONER 0052

DAM GREENWOOD LADY MAY JJP 91H

PF OKLAHOMA 6625
BROOKING ROYAL LASS 8007
LD CAPITALIST 316
KR LADY MAY 4382



GRAND DAM

A powerful Sooner daughter with all the pieces to become a front-pasture female. Her dam, 91H, is a direct daughter of 4382, the cow behind the buzz surrounding the Lady May cow family and a string of high-selling daughters. 91H is a heavy-made, bold-ribbed female with excellent feet and a tidy udder - and she's destined for our donor pen. The Sooner daughters are maturing into impressive young cows with beautiful udders, and 78M is no exception. Built for production and presence.

41

GREENWOOD LADY ANN 64M

JJP 64M - 2371843 - Feb 2, 2024

CE	BW	VW	YW	Milk	MCE	MARB	FAT	CWT	REA
5.0	2.5	51	87	26	3.0	0.52	0.004	32	0.45

Act.BW 80

Adj.WW 626

Adj.YW -

SIRE BROOKING SOONER 0052

DAM STANDARD HILL LADY ANN 91W

PF OKLAHOMA 6625
BROOKING ROYAL LASS 8007
GBT DESIGN 878 41P
STANDARD HILL LADY ANN 35N



DAM

A real nice Sooner daughter, stamped much like her beautiful dam, who finally went to town this fall after raising yet another 875 lb bull calf at 16 years old. Longevity, udder quality, and foot structure are bred in here. When one walks into the picture pen and nails the shot on the first try, you know she's built right. The kind that's easy to appreciate and carrying an exciting service.

GREENWOOD EVENING TINGE 171M

42

JJP 171M - 2377914 - Jan 8, 2024

CE	BW	WW	YW	Milk	MCE	MARB	FAT	CWT	REA
9.0	-0.2	70	126	25	10.0	0.30	0.022	53	0.39

Act.BW **65**

SIRE NORTHWAY BANG ON 13G

Adj.WW **586**

DAM HF EVENING TINGE 26E

Adj.YW -

MUSGRAVE 316 COLOSSAL 137
PEAK DOT DUCHESS 93D

MUSGRAVE BIG SKY
HF EVENING TINGE 118Z

A high-performance female backed by the legendary Evening Tinge cow family from Hamilton Farms. 171M offers more frame, extra muscle shape, and impeccable structure, with feet and legs built for longevity. Her dam, HAMI 26E, is a true powerhouse - perfect-footed and consistently producing calves with performance and quality. Bred early to Standout; one of the only services available in Canada, making this a rare and valuable opportunity to tap into something both proven and exclusive.



DAM



AI Bred to TOPP STANDOUT 1072 on APR. 9/25 (SAFE). DUE Jan. 17, 2026.

GREENWOOD BLACK LADY 54M

43

JJP 54M - 2378862 - Jan 24, 2024

CE	BW	WW	YW	Milk	MCE	MARB	FAT	CWT	REA
3.0	1.0	74	125	25	8.0	0.81	0.050	53	0.32

Act.BW **68**

SIRE J TRADEMARK 1037

Adj.WW **703**

DAM EVERBLACK BLACK LADY 18K

Adj.YW -

SITZ RESILIENT 10208
MILL BRAE IDEN GEORGINA 4086

BAR-E-L STAMINA 11F
BIDWELL BLAKC LADY 11Z

54M came in-dam from a purchase out of Everblack Angus, and she's lived up to the expectations. The Stamina 11F bull has done great things for their program, and we were excited to add a daughter to ours. 54M is a performance-driven female with a pedigree twist and strong EPD profile. She's good-footed, long-bodied, and bred early to Standout—a mating that could pay for her right out of the gate.



SERVICE SIRE



AI Bred to TOPP STANDOUT 1072 on APR. 9/25 (SAFE). DUE Jan. 17, 2026.



AI Bred to TOPP STANDOUT 1072 on APR. 4/25 (SAFE). DUE Jan. 12, 2026.



AI Bred to BELVIN MODELO 4032 on JUNE 10/25 (SAFE). DUE MAR, 20, 2026.

44

GREENWOOD **TIBBIE** 177M

JJP 177M - 2377912 - Jan 12, 2024

CE	BW	WW	YW	Milk	MCE	MARB	FAT	CWT	REA
4.0	2.1	80	144	32	11.0	0.10	-0.009	61	0.76

Act.BW 72

Adj.WW 624

Adj.YW -

SIRE **SCHIEFELBEIN GABLE 311**
DAM **GREENWOOD TIBBIE JJP 51G**

SITZ RESILIENT 10208
FROSTY ELBA LIZZY 5569
COLEMAN CHARLO 0256
RRD TIBBIE 28Z



DAM

The Gable daughters we have milking are beautiful young cows with excellent udders—and this one is no exception. She's massive through her middle third, clean and attractive up front, and dropping a perfect udder underneath. Her donor dam; 51G, is still a standout in the flesh - wide-hipped, bold-ribbed, and as powerful as they come. A maternal sister was a highlight in last year's sale, going to Riverfront Angus and Tri-S. Cow family, quality, and consistency all built into this one.

45

GREENWOOD **KATHLEEN** 204L

JJP 204L - 2371807 - DEC. 28, 2023

CE	BW	WW	YW	Milk	MCE	MARB	FAT	CWT	REA
-3.0	4.6	84	146	28	4.0	0.53	0.074	66	0.68

Act.BW 85

Adj.WW 676

Adj.YW -

SIRE **S A V PANTHER 1906**
DAM **ALLANDALE KATHLEEN 45H**

S A V QUARTERBACK 7933
S A V BLACKCAP MAY 6644
MUSGRAVE 316 STUNNER
ALLANDALE KATHLEEN 22F



SERVICE SIRE

One of the absolute beasts of the offering. She's extremely easy fleshing, deep-sided, and soggy made, with a big-time udder and foot quality to match. 204L will make an ideal cow, especially for one of our later-calving friends program. Her dam is a beautiful, heavy-milking female with a flawless udder, and she consistently raises monster calves. Built for raising bulls!



Open Heifers

PAGES 40 - 73



There has been more excitement and discussion about whether 185N would be offered for sale or not, than possibly any female we have ever sold. She is the very first daughter to sell out of the \$210 000 Black Gold Tangleflags, and out of the \$100 000 valued Canadian Simmental Show Female of the Year, Hayleigh 213K. 185N combines so much growth and power, with a smooth shouldered, up-headed, feminine image. She's so flexible off both ends and offers extra foot and bone size, which makes her fun to watch strut around the pen. We would like the chance to keep her at the side of her dam, with the intention of showcasing their quality at some of the fall shows. 213K has turned into a huge bodied, big footed, good uddered female who has quickly made her way into our ET program. There is no question that both us and Twin Springs Farm will be building around her in the future. We invite anyone to come see both 185N and her dam, as we feel they are some of our favorite cattle that we ever bred here at BGS.

46



SIRE

BLACK GOLD MS HAYLEIGH 185N

46

Purebred - Homo Polled - Hetero Black - CLNO 185N - 1514902 - Jan 26, 2025

CE	BW	WW	YW	Milk	MCE	MWWT	STAY	API	TI
8.1	3.9	90.3	139.3	20.8	4.3	66	18.7	123.11	78.06

Act.BW 96 SIRE BLACK GOLD TANGLEFLAGS 31L

Adj.WW 762 DAM BLACK GOLD MS HAYLEIGH 213K

KWA HOLYFIELD 96J
KJP MISS RUSYLVA 46H
EC REBEL 156F
KDP MISS HOYA HAYLEIGH



DAM



DAM



We switched a few gears with Hayleigh 15G and our mating decisions, and took her to the huge muscled, power bull El Dorado 81K. This resulted in this long spined, long hiped, stout made female. She's still feminine and refined up front, has the biggest and hairiest ears in the offering, and is sound structured on the move. A blazed face full brother is a powerhouse in our bull pen, and we look forward to getting more of these calves on the ground in 2026. A definite feature and favorite of many, this year's offering of Hayleigh daughters and granddaughters may be as good as we have ever had. To date, Hayleigh is just under \$1 Million in direct progeny sales, and her sons and daughters in Canada have averaged over \$30 000. 189N is the kind that would be fun to show at any point in her life, but be equally as exciting to get into production.

BLACK GOLD MS HAYLEIGH 189N

47

Purebred - Homo Polled - Hetero Black - CLNO 189N - 1514908 - Jan 27, 2025

CE	BW	WW	YW	Milk	MCE	MWWT	STAY	API	TI
4.9	7.1	95.3	141.7	22.6	3.6	70.3	13.9	104.34	76.34

Act.BW 98

SIRE DEEG EL DORADO 81K

Adj.WW 779

DAM KDP MISS HOYA HAYLEIGH

SVS TYCOON 841F
WLB 18D SOFIE 497F

LLSF PAYS TO BELIEVE ZU194
K-LER/RC MISS HOYA SAXA





102N is the first daughter to sell off the 2023 Supreme Champion Female in the First Lady Classic at Agribition. 153K was purchased by the Eaton family out of the 2022 Evolution, and had many successes throughout the year with Kehler on the halter. She has turned into a powerful, extremely long bodied, feminine donor cow. 102N has done nothing but get better every day. She is awesome haired, good looking, and soft ribbed with an ideal set to her hip and hindleg. The kind of female you can put a halter on and only have more and more success as the year goes on.

48

BCS/BAR SK

MS HAYLEIGH 102N

Purebred - Homo Polled - Hetero Black- CLNO 102N - 1515453 - Jan 15, 2025

CE	BW	WW	YW	Milk	MCE	MWWT	STAY	API	TI
12.5	0.9	83	115.2	20.3	4.6	61.8	16.6	139.24	83.59

Act.BW 82

SIRE WFL MOUNTAIN VIEW 4J

Adj.WW 651

DAM BLACK GOLD MS HAYLEIGH 153K

KWA RED ITALIAN 122E

WFL 9072 MS RED DOLL 913G

EC REBEL 156F

KDP MISS HOYA HAYLEIGH





One of the softest made, deepest bodied females in the offering, 127N is easy to like. Very docile, easy doing, and sound structured, 127N is another possible show heifer prospect that could be a lot of fun. 285J is a huge bodied, stout made, good uddered Soda daughter. She has a daughter sired by Mountain View selling our bred heifer section, and is a big reason why we like these halfblood cattle so much. Cabaret crossed very well on our Soda daughters, and this is a mating we will continue to create in the future.

BLACK GOLD MS SODA POP 127N

49

3/4 Purebred - Homo Polled - Homo Black - CLNO 127N - 1520454 - Jan 18, 2025

CE	BW	WW	YW	Milk	MCE	MWWT	STAY	API	TI
10.7	2.8	87.9	142.3	19.5	4.9	63.4	14.4	118.71	78.53

Act.BW 92

SIRE LFE CABARET 847J

Adj.WW 763

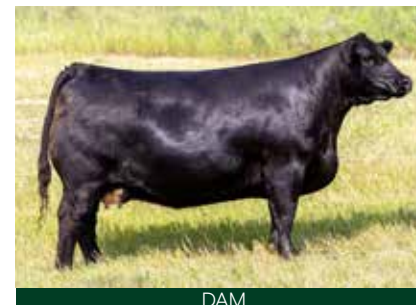
DAM BLACK GOLD MS SODA POP 285J

RF CALIBER 014G
LFE BS KAT 671E

74-51 SUDDEN LOOK 1023
CMS SODA POP 425B



SIRE



DAM



A definite feature in the offering from the great people at Westway Farms. 5004N is very small and tidy about her head and neck, but blends back into a powerful rib shape, soft and sweeping lower rib, and stout pin set. She's one that you can look at for hours in the pen with her up-headed, good structured presence. Her dam 1810F is the number one favorite percentage cow at Westway, and has put several sons through their annual bull sale, and a high quality daughter through their female sale last fall that was shown all year by Levi Martin. 5004N carries an awesome phenotype and very intriguing pedigree, and has several full brothers that highlight the WFL bull pen for their 2026 bull sale.

WFL CREAM SODA 5004N

50

3/4 Purebred - Homo Polled - Homo Black - WFL 5004N - 1516202 - Jan 11, 2025

CE	BW	WW	YW	Milk	MCE	MWWT	STAY	API	TI
8.9	6.9	98.4	150.9	16.8	0.7	66	12.8	110.98	80.05

Act.BW 89 SIRE BLACK GOLD NOBLEMAN 178L

Adj.WW 679 DAM WHL CREAM SODA 1810F

KCCI COUNTERTIME 872H
RF CERTAINLY FLIRTIN 532C
S A V 004 DENSITY 4336
CMS SODA POP 422B





33N is a sharp fronted, cool looking, stout made Cabaret daughter with just enough white to get noticed. 129J is a past Evolution sale heifer, who once again had lots of success with Kehler Eaton at the halter. She then turned into a powerful, big bodied, good uddered donor female whose first son sold in our 2025 bull sale to Wheatland Cattle Co for \$26 000. This mating has worked time and time again, with 33N having two $\frac{3}{4}$ sisters also in the sale, 6M and 127N.

BCS/BAR SK SODA POP 33N

51

Purebred - Hetero Polled - Homo Black - CLNO 33N - 1513507 - Jan 6, 2025

CE	BW	WW	YW	Milk	MCE	MWWT	STAY	API	TI
7.7	3	88	137.8	18.3	3.4	62.3	12.2	116.61	79.99

Act.BW 92

SIRE LFE CABARET 847J

Adj.WW 675

DAM BLACK GOLD MS SODA POP 129J

RF CALIBER 014G
LFE BS KAT 671E

W/C RELENTLESS 32C
CMS SODA POP 425B





262N is an extremely powerful female with extra growth, performance, muscle, and length of body. This comes as no shock as we always admired the dimension and body in 134J coupled with a maternal look, when she was the high selling Simmental in the first ever Evolution Sale. Caliber progeny have consistently topped both spring and fall sales, and 262N will be one of the several females to sell in this sale that combine both the Soda Pop and Flirt cow families.

WF/CW SODA POP 262N

52

Purebred - Homo Polled - Homo Black - WF 262N - 1514491 - Jan 5, 2025									
CE	BW	WW	YW	Milk	MCE	MWWT	STAY	API	TI
7.5	3.8	92.7	137.3	16.5	2.8	62.9	13.1	115.66	80.71

Act.BW **98**
Adj.WW -
SIRE **RF CALIBER 014G**
DAM **BLACK GOLD MS SODA POP 134J**

NGDB STRUCTURE 34D
RF NOT JUST A FLIRT 404B
W/C RELENTLESS 32C
CMS SODA POP 425B





An absolute powerhouse in the offering and one of our favorite Cabaret daughters all year long. 8N is a huge bodied, muscular, big boned female who still remains smooth and attractive in her makeup. We like her added hair, depth of flank, and docile temperament. 105J was purchased as the high selling female from Indian River in 2021 and is a big framed, good footed female with lots of muscle and body throughout. Her more outcross pedigree and cow family has been fun to cross with some of our most consistent genetics, which resulted in this sale feature.

BLACK GOLD MS JESSICA 8N

53

Purebred - Homo Polled - Homo Black - CLNO 8N - 1514924 - Jan 2, 2025

CE	BW	WW	YW	Milk	MCE	MWWT	STAY	API	TI
8.7	2.3	89.8	140.9	17.8	5.6	62.7	12.6	112.69	78.59

Act.BW 90

SIRE LFE CABARET 847J

Adj.WW 823

DAM IRCC JESSICA 105J

RF CALIBER 014G
LFE BS KAT 671E

GEFF COUNTY O
ERIXON LADY 2F





54

It has been a few years since we have sold any direct Ava B408 daughters, and we are excited to feature this impressive baldy. Ava is still an impressive donor at age 11 with big square feet, a good udder, and a long, expressive body shape. 20N offers extra growth and length of spine, with a feminine and maternal look. This was a very consistent flush with three full sisters that were retained in our replacement pen. With Ava getting up there in age, we may not be offering any more direct daughters off her.

BLACK GOLD **MS** **AVA** 20N

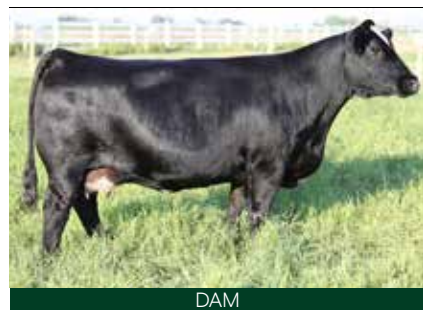
54

Purebred - Homo Polled - Hetero Black - CLNO 20N - 1514901 - Jan 4, 2025

CE	BW	WW	YW	Milk	MCE	MWWT	STAY	API	TI
12.6	2.1	75.9	115.2	19.5	8	57.5	17.8	122.65	71.19

Act.BW **92** **SIRE** LFE CABARET 847J
Adj.WW **754** **DAM** FSCI AVA B408

RF CALIBER 014G
LFE BS KAT 671E
SVF/NJC BUILT RIGHT N48
CNS BLACK STAR T702



DAM



MATERNAL BROTHER



A big bodied, smooth made, sound structured Holyfield daughter that reads with maternal quality throughout. 264K is a past high seller from Friday Night Lights, and has turned into an ideal donor for us and Twin Springs. Her massive body, good udder, perfect feet, and nice look always garners extra attention from visitors. We have two maternal sisters that're at the top of our replacement pen to calve in 2026, and Twin Springs have a yearling heifer that is probable to be shown this fall. I would expect 124N to continue her dams body type, foot and udder quality, and docility as she gets into production.

BCS/TWIN SPRINGS **FLIRT** 124N

55

Purebred - Homo Polled - Hetero Black - CLNO 124N - 1514926 - Jan 18, 2025

CE	BW	WW	YW	Milk	MCE	MWWT	STAY	API	TI
7.4	5.4	96.5	142.2	21.2	2.7	69.5	17.2	116.45	78.67

Act.BW **90**

SIRE KWA HOLYFIELD 96J

Adj.WW **803**

DAM RF FLIRT 264K

BLCC BLACK MARKET 19G
KWA MS RAVEN 141E

RF SHAKEDOWN 074H
RF FLIRT 850F





81N has been a standout her whole life alongside her impressive two year old dam. 81L is an outcross pedigreed, attractive, good uddered halfblood female who we are excited about in the future. 81N offers exceptional growth, length of body, smoothness, and power, especially for being born off a first calf heifer. She's extremely quiet and would make a great show heifer prospect for any age of showperson.

56

GREENWOOD MS YASMIN 81N

3/4 Purebred - Homo Polled - Hetero Black - JJP 81N - 1520527 - Jan 7, 2025

CE	BW	WW	YW	Milk	MCE	MWWT	STAY	API	TI
13	2.4	89.8	132.9	23.4	4.9	68.3	13.4	-	-

Act.BW 82

SIRE WFL MOUNTAIN VIEW 4J

Adj.WW -

DAM BLACK GOLD MS YASMIN 81L

KWA RED ITALIAN 122E
WFL 9072 MS RED DOLL 913G

ELLINGSON RUSH 0177
BLACK GOLD MS YASMIN 252J





5013N is an up-headed, attractive female with extra frame and length of body. She is one of the quietest, most laid back females on offer and would make a great junior show heifer prospect, as she has done nothing but get better each day. 9109G was no question one of our favorite females when touring Westway, as she is a huge bodied, big footed, good uddered percentage female. A maternal sister to 5013N was selected by Lewis Farms in their female sale last fall.

WFL BLACK LADY 5013N

57

3/4 Purebred - Homo Polled - Hetero Black - WFL 5013N - 1516206 - Jan 15, 2025

CE	BW	WW	YW	Milk	MCE	MWWT	STAY	API	TI
7.6	4.2	89.9	130.8	19	7.8	64	17	101.36	70.39

Act.BW 87

SIRE BJJL BETTS 24K

Adj.WW 694

DAM WHL LADY 9109G

SVS BETTS 808F
BJL MISS KILLSWITCH 19F
NGDB STRUCTURE 34D
THUNDER CREEK LADY 72W



MATERNAL SISTER



DAM



58

One of the most obvious advantages to us when touring Westway is the strength behind their cow herd, and cow families. 9111G is one of the best and most productive red cows at WFL, and had ten registered progeny born in 2024 alone. She is a stout, smooth made female with a near perfect udder. 5123N is a moderate framed, deep ribbed, smooth made female who looks to be ideal and teet size and placement. Nobleman was a definite favorite of ours in 2023, due to his awesome foot, great hair, bold body shape, and attractive look. Throw in his rather outcross but dependable pedigree and EPD profile, he is seeing lots of use in both the natural and ET programs at WFL and BGS.

WFL BLACK ELEGANCE 5123N

58

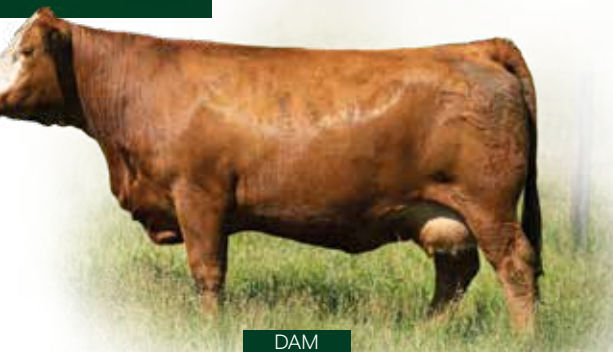
Purebred - Homo Polled - Hetero Black- WFL 5123N - 1516208 - Feb 10, 2025										
CE	BW	WW	YW	Milk	MCE	MWWT	STAY	API	TI	
8.5	3.5	81.6	117.7	20.8	3.6	61.6	12.5	104.81	71.72	

Act.BW 84 SIRE BLACK GOLD NOBLEMAN 178L
Adj.WW 724 DAM WFL 403B MS ELEGANCE 9111G

KCCI COUNTERTIME 872H
RF CERTAINLY FLIRTIN 532C
WFL WESTERDALE 6E
WFL MS ELEGANCE 403B



MATERNAL SISTER



DAM



A powerful, stout made, big bodied Nobleman daughter that again is backed by a big time cow family. HPF Valentine Z322 is responsible for some of the best progeny and grandprogeny in Westway's sales year after year. With thirteen registered progeny in a short four years, Valentine progeny are consistent in their body shape, muscle, and performance. 5030N again has a shot of 532C in pedigree, who has no question been our best and most consistent red donor over the years, and is still impressive at ten years of age.

WFL RED VALENTINE 5030N

59

Purebred - Homo Polled - ANDI 5030N - 1516204 - Jan 20, 2025

CE	BW	WW	YW	Milk	MCE	MWWT	STAY	API	TI
7.3	5.7	95.1	138.2	18.6	3.6	66.2	11.3	116.18	83.2

Act.BW 92

SIRE BLACK GOLD NOBLEMAN 178L

Adj.WW 728

DAM ANDI VALENTINE 902G

KCCI COUNTERTIME 872H
RF CERTAINLY FLIRTIN 532C

CCLT ALLIANCE 91C
HPF VALENTINE Z322



MATERNAL SISTER



DAM



60

BLACK GOLD **MS FLIRT** 272N

60

Purebred - Homo Polled - Hetero Black- CLNO 272N - 1514911 - Feb 9, 2025

CE	BW	WW	YW	Milk	MCE	MWWT	STAY	API	TI
7.7	5.2	84	133.9	17.2	2.9	59.2	15.2	110.21	71.92

Act.BW **89** **SIRE** **NEXT LEVEL**
Adj.WW **740** **DAM** **RF CERTAINLY FLIRTIN 532C**

KRJ DAKOTA OUTLAW G974
KRDL CAEDENCE C37
SVS CAPTAIN MORGAN 11Z
RF CERTAINLY FLIRTIN 202Z



MATERNAL BROTHER

LOTS 60 & 61:
A pair of ET sisters that we have been very high on for quite some time. Mating the powerful, easy doing, huge bodied 532C with the outcross pedigreed, good looking Next Level has given us two sisters that're different in their kind but consistent in quality. The red blazed face powerhouse is so fun to work on and look at, as she offers extra power, foot and bone size, hair, and structural integrity. Whether it's at the end of the halter or in the donor pen, the opportunities for 1N are truly endless. The younger 272N is a good looking, soft made, well balanced show heifer prospect, that continues to impress more and more each day. If you're looking for one that's going to be competitive as a bred heifer next year, 272N may be as intriguing as any heifer in the sale. These two sisters combine a big time cow family, quality phenotype and show ring presence, with docile temperaments and that bit of extra chrome. Two heifers that should be easy to find on sale day!



MISS RUSYLVA **CHAT FLIRT 1N**

61

Purebred - Homo Polled - KJP 1N - 1515542 - Jan 1, 2025

CE	BW	WW	YW	Milk	MCE	MWWT	STAY	API	TI
7.5	2.7	70.6	106.7	17.2	2.9	52.5	15.2	104.15	64.76

Act.BW **92**

SIRE NEXT LEVEL

Adj.WW **698**

DAM RF CERTAINLY FLIRTIN 532C

KRJ DAKOTA OUTLAW G974
KRDL CAEDENCE C37

SVS CAPTAIN MORGAN 11Z
RF CERTAINLY FLIRTIN 202Z



MATERNAL BROTHER



DAM



22N is a very smooth made, feminine, awesome haired female who is a dream to work with in the barn. Braydon had a set of three flush sisters out of this mating that were extremely impressive, and all possessed the Darlin' look and soft made body type. Right Time has been used exclusively on some of our top donors, and his progeny impress us with his foot and udder quality, muscling, and birth-yearling performance. Darlin' 4H has become an impressive, consistent donor for us and Twin Springs, and seems to work with every bull we have thrown at her. To us she is so ideal in her phenotype, and is the kind that both us and the Thompsons will build around for years to come.

TWIN SPRINGS DARLIN' 22N

62

Purebred - Homo Polled - Hetero Black - BLT 22N - 1517768 - Jan 20, 2025										
CE	BW	WW	YW	Milk	MCE	MWWT	STAY	API	TI	
9.4	2.4	85.6	129.8	25.6	5.6	68.4	13.7	121.93	80.51	

Act.BW **88**
Adj.WW **719**

SIRE ES RIGHT TIME FA110-4
DAM MADER DARLIN' 4H

WELSHS DEW IT RIGHT067T
ES A110
SVS BETTS 808F
IRCC DARLIN' 613D



MATERNAL SISTER



DAM



A moderate framed, good looking female with the same kind of Darlin' hair and bold rib shape. To date, 4H progeny have averaged over \$20 000, and Twin Springs currently have two daughters in embryo production. 35N combines both the Darlin' and the Soda Pop cow families, who have been two of the best and most productive cow families within our breed. 35N is another female that has only got better since weaning, and one who should definitely have a bright future.

RNR DARLIN 35N

63

Purebred - Homo Polled - RNR 35N - 1516191 - Jan 23, 2025

CE	BW	WW	YW	Milk	MCE	MWWT	STAY	API	TI
9	1.2	76	106.5	21.8	6.6	59.8	14.3	110.03	71.06

Act.BW 90

SIRE SVS BOND 973G

Adj.WW 679

DAM MADER DARLIN' 4H

MADER WALK THIS WAY 224B
CMS SODA POP 410B

SVS BETTS 808F
IRCC DARLIN' 613D



MATERNAL SISTER



DAM



We were ecstatic to get the first ET calves born off the \$180 000 valued, 2023 Supreme Champion Female at Agribition. But when this dark red baldy was born, our excitement even grew. 277N is one of the youngest females on offer, but has quickly turned into a favorite of many visitors. She is so soft and deep ribbed, big footed and flexible, and blends it all together with a smooth, refined look. Mountain View progeny have topped our bull sales for back to back years, with sons averaging just shy of \$30 000 to date. In saying that, his daughters in production are proving that his maternal quality is as high as any red bull we have ever used. The opportunities and generating potential with 277N are endless, and we can't wait to continue Peppa's legacy with daughters of this quality.

BLACK GOLD MS PEPPA 277N

64

Purebred - Homo Polled - CLNO 277N - 1514912 - Feb 11, 2025										
CE	BW	WW	YW	Milk	MCE	MWWT	STAY	API	TI	
12.1	1.7	87.6	127.2	23.2	4.4	67	16.1	138.68	85.94	

Act.BW **92**
Adj.WW **808**

SIRE WFL MOUNTAIN VIEW 4J
DAM GVR MISS PEPPA 21J

KWA RED ITALIAN 122E
WFL 9072 MS RED DOLL 913G
GVR INTRIGUE 63F
RUST MISS PEPPA 713E





It feels wrong to round out our heifer calves with 36N, as she carries as much dimension, depth, and overall stoutness as any female in our offering. She is no question the easy doing kind and has had that “cowwy” image since a young age. 247H is a top red cow here with an abundance of length, rib, and bone, while having a well balanced look from the side. During tours this past summer, a son of 247H was a constant favorite of visitors who was held back from our 2025 bull sale. A consistent pedigree and cow family, 36N is another female we really should be keeping, but we are committed to making the fifth edition of The Evolution the best one yet!

BLACK GOLD MS EASY LOVE 36N

65

Purebred - Homo Polled - CLNO 36N - 1513511 - Jan 6, 2025

CE	BW	WW	YW	Milk	MCE	MWWT	STAY	API	TI
6.1	4.1	93.8	137.7	25.4	0.2	72.3	11.6	113.51	83.08

Act.BW 94

SIRE WFL MOUNTAIN VIEW 4J

KWA RED ITALIAN 122E
WFL 9072 MS RED DOLL 913G

Adj.WW 750

DAM BLACK GOLD MS EASY LOVE 247H

CMS FRONTIER 709E
WRS EASY LOVE E736



DAM



9N is a high-performance full sister to 7N and cut from the same mold — an absolute tank with incredible middle third and depth of body. These sisters combine what we believe are some of the most sought-after genetics in our program. 9N has the power, presence, and style to make a serious run at the fall shows, just like her dam did when she was named Senior Heifer Calf Champion at Farmfair International. She's got all the right parts and pieces, and if you raise bulls - she'll build them. Without question, 9N is a major donor prospect and one of the best heifer calves we've ever offered.

66

GREENWOOD BFC **BEAUTY 9N**

JJP 9N - 2427615 - Jan 2, 2025

CE	BW	WW	YW	Milk	MCE	MARB	FAT	CWT	REA
3.0	1.1	64	112	17	6.0	0.35	0.016	37	0.34

Act.BW 88

SIRE GREENWOOD OVERTIME 1L

Adj.WW -

DAM GREENWOOD BEAUTY 8K

Adj.YW -

BROOKING MERCURY 9057
GREENWOOD TIBBIE JJP 51H
GREENWOOD HIGH CLASS JJP 87H
GREENWOOD BEAUTY JJP 23D





7N is a female with unmatched depth of body, a big hip, and that eye-catching fuzzy hair that draws attention from every angle. Her dam was a past Evolution high seller, bringing \$35,000 to the Davies family, and she's developed into an impressive young cow with a bright future in both our programs. The sire of 7N was the \$55,000 high seller in our 2024 bull sale to VeeTee Angus, a powerful individual with near-perfect feet, built-in calving ease, and strong maternal genetics. His first calf crop is already exceeding expectations, and 7N is a standout example of the quality he's transmitting.

67		GREENWOOD BFC BEAUTY 7N									
		JJP 7N - 2430799 - Jan 1, 2025									
Act.BW	90	CE	BW	WW	YW	Milk	MCE	MARB	FAT	CWT	REA
		1.0	2.5	65	122	15	9.0	0.25	0.006	43	0.58
SIRE		GREENWOOD OVERTIME 1L									
DAM		GREENWOOD BEAUTY 8K									
BROOKING MERCURY 9057											
GREENWOOD TIBBIE JJP 51H											
GREENWOOD HIGH CLASS JJP 87H											
GREENWOOD BEAUTY JJP 23D											



GRAND DAM



GRAND DAM



19N has been a favorite of visitors with a captivating presence to anyone who lays eyes on her. We're not sure what convinced the Rusylvia/Shologan crew to part with this one but we're glad they chose the Evolution Sale for her debut. She's the kind that ties it all together: balance, presence, structure, and look. Her dam was a past Evolution highlight that was selected for \$31,000 in 2023 who has since went on to be a front pasture cow and great producer, a full brother to 19N will be one to watch. The Zexy cow family comes from the famous Miss Essence cow family at Miller Wilson Angus. We see her as a heifer that could be dominant on the show road, yet with breeding potential that's truly limitless. 19N is rare in her kind - hard to find, usually not for sale, and even harder to raise. Opportunities like this don't come around often.

RUSYLVIA SC MISS ZEXY 19N

KJP 19N - 2438724 - Jan 3, 2025

68

CE	BW	WW	YW	Milk	MCE	MARB	FAT	CWT	REA
1.0	3.0	66	116	19	0.0	-	-	-	-

Act.BW 82

SIRE

COLEMAN MENDOZA 271

HUMMEL SOUTH AMERICA
COLEMAN DONNA 5247

Adj.WW -

DAM

GREENWOOD BORN SEXY 56K

BROOKING MERCURY 9057
GREENWOOD BORN SEXY 1B

Adj.YW -





18N has been a standout since day one and quickly became a favorite among visitors this summer. Her sire, Mendoza, is off to an impressive start in his breeding career and appears poised to make a lasting impact in many programs. 18N is backed by a powerful cow family; her dam, 51H, is one of our favorites and has already produced sons commanding \$55,000 and \$27,000. The resemblance between 18N and her dam is striking, and if that's any indication, her future as a producer is bright. She also has some exciting full brothers that will be headliners in our 2026 bull sale. 18N just might raise the bar even higher than her dam and is one of my picks to lead this set of calves as a potent producer.

GREENWOOD **TIBBIE** 18N

JJP 18N - 2427725 - Jan 3, 2025

69

CE	BW	WW	YW	Milk	MCE	MARB	FAT	CWT	REA
6.0	1.4	64	118	22	4.0	-0.15	0.029	48	0.64

Act.BW **82**

SIRE COLEMAN MENDOZA 271

HUMMEL SOUTH AMERICA
COLEMAN DONNA 5247

Adj.WW -

DAM GREENWOOD TIBBIE JJP 51H

MC CUMBER TRIBUTE 702
RRD TIBBIE 28Z

Adj.YW -





500N is a powerhouse cow prospect out of the original Zexy cow and the immortal Emerald Kord purchased as an embryo. Back in our early Angus days before we realized we should probably stick with traditional cow family names we came up with "Zexy & I Know It" simply because the year letter was Z. Thankfully, Lee and Dawn Wilson didn't mind that we'd accidentally renamed the world-renowned Miss Essence cow family. The name stuck, and "Zexy" has become a reminder of how far we've come, where we're headed, and the stories that make this all worth it. (If you'd prefer to call their progeny Miss Essence's going forward, we won't hold it against you.) 500N is a perfect example of what the Zexy cow family is, she's easy doing, attractive, with a great head and neck attachment, and the kind of hair that makes her fun to show. A heifer with show-ring presence now and real cow potential down the road.

70

KAY-R ZEXY AND I KNOW IT 500N

KAYR 500N - PENDING - Jan 10, 2025

CE	BW	WW	YW	Milk	MCE	MARB	FAT	CWT	REA
-5	4.6	57	129	25	-	-	-	-	-

Act.BW 74

Adj.WW -

Adj.YW -

SIRE

DAM

BROOKING EMERALD 9179

GREENWOOD ZEXY AND I KNOW IT

S A V RENOVATION 6822
BROOKING BEAUTY 6051

GUMBO GULCH CREED 94S
DMM ESSENCE 17T



DAM



FULL BROTHER



Here's a stout female out of a first calf heifer from our good friends at 20/20 Angus, fancy, powerful, and built right. This heifer combines stoutness and muscle expression with an impressive skeletal build, bold bone shape and heavy-duty feet built for longevity. She's sired by a direct son of Emerald - the second lead-off bull in our 2023 sale - and you'll find his full sister in this very catalog, showcasing the consistency and power of the Emerald x Zexy mating. Her dam is a beautifully made, sound-footed two-year-old with a tidy udder and great maternal look. The pair claimed Champion Heifer Calf Pair honours at the 2025 Turtleford Pen Show this August. Good dispositioned female with the tools to show competitively and more importantly make a great momma cow.

71

20/20 LADY ANN 16N

BOLD 16N - 2410218 - Jan 21, 2025

CE	BW	WW	YW	Milk	MCE	MARB	FAT	CWT	REA
-2.0	4.0	55	101	29	1.0				

Act.BW **88**

Adj.WW -

Adj.YW -

SIRE GREENWOOD EMERALD 55K

DAM 20/20 LADY ANN 44L

BROOKING EMERALD 9179
GREENWOOD ZEXY AND I KNOW IT

MERIT BUCK 7009
20/20 LADY ANN 17Z





36N is an awesome cow prospect with a sweet disposition - gentle and quiet enough for a first-time show person. She's a granddaughter of the great Hami 22C donor cow, who was a highly productive female for both ourselves and Hamilton Farms. A maternal sister was a past Evolution highlight, selling to Double RN for \$19,000, and another sister will be featured as a bred in this year's offering. 36N is easy doing, good bodied, sound, with excellent feet and leg structure. Safe bet for a great cow.

72

GREENWOOD TIBBIE 36N

JJP 36N - 2413711 - Jan 7, 2025

CE	BW	WW	YW	Milk	MCE	MARB	FAT	CWT	REA
-1.0	3.5	68	124	24	-1.0	0.41	0.047	54	0.68

Act.BW 84

Adj.WW -

Adj.YW -

SIRE S A V TERRITORY 7225

DAM GREENWOOD HF TIBBIE JJP 16F

S A V RESOURCE 1441

S A V EMBLYNETTE 3293

HA COWBOY UP 5405C

HF TIBBIE 22C



MATERNAL SISTER



GRAND DAM



52N is a big-topped, long-bodied heifer with the kind of build that will raise bulls. She's nice haired, good natured, and easy to work with - the kind of female that would make a great junior project before transitioning into a productive cow. Her dam has been a consistent producer, raising a high-end calf year after year, including a \$13,000 Evolution sale heifer last year that sold to Bar Down Livestock. She's backed by a strong udder and good feet, and we expect 52N to follow right in her footsteps.

73

GREENWOOD MISS ESSENCE 52N

JJP 52N - 2413731 - Jan 14, 2025

CE	BW	WW	YW	Milk	MCE	MARB	FAT	CWT	REA
7.0	2.5	53	88	27	3.0	0.16	0.043	28	0.33

Act.BW 83

Adj.WW -

Adj.YW -

SIRE

DAM

GREENWOOD FOUR MILE 47J

GREENWOOD MISS ESSENCE JJP 77G

U-2 COALITION 206C
RRD TIBBIE 28Z

74-51 SUDDEN LOOK 1023
GREENWOOD MISS ESSENCE JJP 21C



MATERNAL SISTER



GRAND DAM



57N is a unique Four Mile daughter with extra stoutness and density in her muscle shape, combined with an ultra-feminine front end. She's super cool through her head and neck, with the kind of look that grabs your attention. Her gorgeous Tribute-sired dam is one we seriously considered campaigning this fall, and she's backed by the ever-impressive Envious Blackbird cow family which continues to excel in production and the kind of functional traits that matter in the Angus breed.

74

GREENWOOD ENVI BLACKBIRD 57N

JJP 57N - 2413765 - Jan 18, 2025

CE	BW	WW	YW	Milk	MCE	MARB	FAT	CWT	REA
4.0	3.7	61	114	24	11.0	0.30	-0.006	49	0.79

Act.BW 90

Adj.WW -

Adj.YW -

SIRE

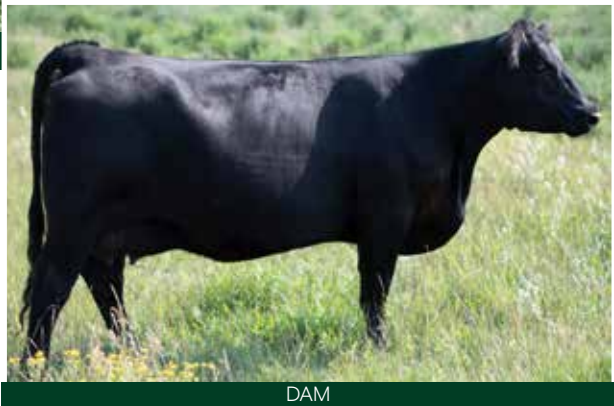
DAM

GREENWOOD FOUR MILE 47J

GREENWOOD ENVIOUSBLACKBIRD 189

U-2 COALITION 206C
RRD TIBBIE 28Z

MC CUMBER TRIBUTE 702
MICH ENVIOUS BLACKBIRD 1424



DAM



51N is a refined, feminine heifer with a beautiful head and neck, correct structure, and soundness in motion. She carries herself with style and balance, the kind that catches your eye and holds it. If you visited Country Lane this summer, you likely found 51N and her dam - a model Angus cow with exceptional phenotype, udder quality, and a lineup of maternal sisters that continue to prove the strength and consistency of this cow family.

75

COUNTRY LANE DIXIE 51N

VAP 51N - 2425698 - Feb 1, 2025

CE	BW	WW	YW	Milk	MCE	MARB	FAT	CWT	REA
8.0	0.1	46	86	23	9.0				

Act.BW **78**

Adj.WW -

Adj.YW -

SIRE GREENWOOD FOUR MILE 47J

DAM COUNTRY LANE DIXIE 5F

U-2 COALITION 206C
RRD TIBBIE 28Z

S A V SENSATION 5615
BROOKING DIXIE 6112





39N is the only Standout 1072 daughter available for sale in Canada this fall. a rare opportunity to acquire genetics that are quickly turning heads across the industry. Standout made a major impact during the 2025 spring bull sale season, with sons averaging an impressive \$66,285 in February. While his bulls are making waves, we're starting to think the females might be even better. To date, we've only sold one other Standout daughter — a \$27,000 feature in the 2024 Evolution Sale to Ter-Ron Farms. 39N is a cookie-cutter example of what Standout is doing on first-calvers: structurally correct, attractive, feminine through her head and neck, and quiet in disposition. Her dam, 7L, is one of our favorite two-year-olds and a direct daughter of the great 23D.

76

GREENWOOD BEAUTY 39N

JJP 39N - 2413685 - Jan 8, 2025

CE	BW	WW	YW	Milk	MCE	MARB	FAT	CWT	REA
5.0	0.2	51	90	19	7.0	0.36	-0.006	36	0.95

Act.BW 65

Adj.WW -

Adj.YW -

SIRE

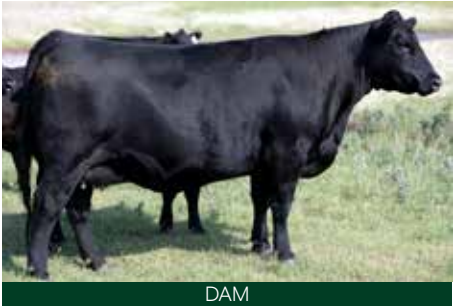
DAM

TOPP STANDOUT 1072

GREENWOOD BEAUTY 7L

S S NIAGARA Z29
TOPP RUBY 5307

NORTHWAY BANG ON 13G
GREENWOOD BEAUTY JJP 23D





13N is a big-bodied, easy-doing female with great hair and impressive structural integrity. We really admire this heifer's build and style, and she continues to come on strong every day. Her pedigree is equally exciting. She's sired by our 2024 second lead-off bull, who sold to JK Bar Cattle for \$18,000. He was as good-footed as they come and a direct son of the influential 424B cow, a cornerstone female in our herd and the granddam of the \$220,000 Greenwood Revenue. On the cow side, she stems from our favorite 55E daughter to date - a beautiful-uddered, flawless female that exemplifies what we strive for in our cow herd.

GREENWOOD BEAUTY 13N

JJP 13N - 2429945 - Jan 2, 2025

77

CE	BW	WW	YW	Milk	MCE	MARB	FAT	CWT	REA
0.0	3.6	54	88	22	9.0	0.14	-0.030	30	0.51

Act.BW 84

SIRE

GREENWOOD BANG ON 190L

Adj.WW -

DAM

GREENWOOD BEAUTY 10K

Adj.YW -

NORTHWAY BANG ON 13G
MICH ENVIOUS BLACKBIRD 1424

GREENWOOD GAME NIGHT JJP 74G
GREENWOOD BEAUTY JJP 55E





87N is built for the long haul on the show road. A bigger-framed, high-growth female with the kind of presence and structure that make her an exciting contender for the show road. She's sound, hairy, has a cool hind leg, and moves effortlessly. As a late February calf, she's only going to get better with time and maturity. Her dam needs no introduction as she's the 2023 Farmfair International Supreme Champion Female and past half-interest high seller in the Evolution Sale at \$80,000 to Blue Hills. With that kind of dam backing and her natural quality, 87N is a show heifer with major upside and long-term value.

78

GREENWOOD BEAUTY 87N

JJP 87N - 2427604 - Feb 19, 2025

CE	BW	WW	YW	Milk	MCE	MARB	FAT	CWT	REA
4.0	1.6	60	107	19	12.0	0.18	-0.018	39	0.85

Act.BW 90

Adj.WW -

Adj.YW -

SIRE

DAM

BROOKING MERCURY 9057

GREENWOOD BEAUTY JJP 58H

BROOKING FIREBRAND 6068

BROOKING BEAUTY 333

BAR-E-L NATURAL LAW 52Y

GREENWOOD BEAUTY JJP 23D



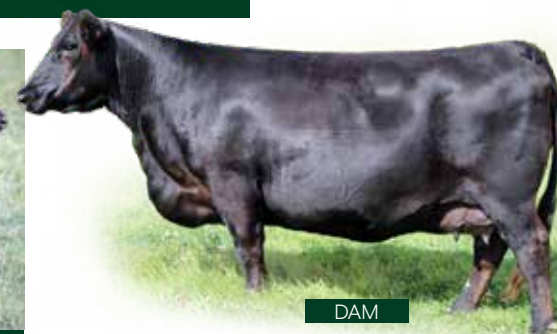


22N is the kind that will age like fine wine just like her dam. She stems from the legendary Beauty cow family, one of the most proven and respected maternal lines in the breed. Her dam, 27D, is a rock-solid donor with a strong track record for fertility, foot and udder quality, and consistent, high-quality progeny. Most recently, a daughter of 27D was selected as the \$62,500 pick of our herd by G2 Cattle and Poplar Meadows Angus and went on to have a dominant fall show season. 22N carries many of the same qualities - clean lines, a correct skeletal build, a beautiful head, and the kind of femininity and balance that make her a sure bet to develop into a top-end cow.

79	GREENWOOD BEAUTY 22N									
	JJP 22N - 2427609 - Jan 4, 2025									
	CE	BW	WW	YW	Milk	MCE	MARB	FAT	CWT	REA
	0.0	3.6	69	125	20	-5.0	0.48	0.018	45	0.65
Act.BW 79	SIRE HF REVERENCE 23K									
Adj.WW -	DAM GREENWOOD BEAUTY JJP 27D									
Adj.YW -	SITZ PROFOUND 680G HF ECHO 92Z S A V 004 DENSITY 4336 TLA BEAUTY 6R									



MATERNAL SISTER



DAM

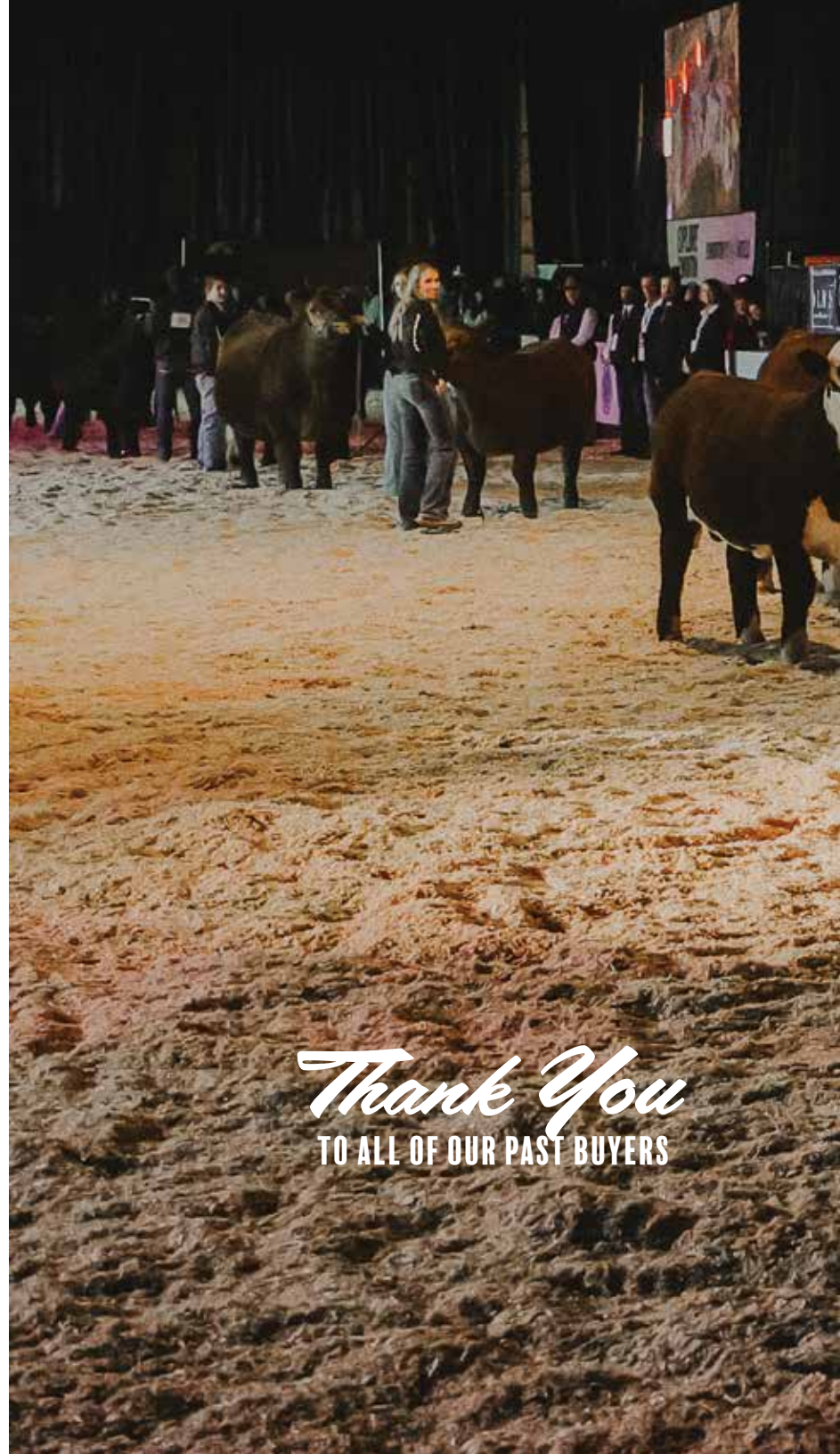


BLACK GOLD SIMMENTAL LTD.

THE NOBLE'S - LLOYDMINSTER, SK
 RANDY & VANESSA - 306 821 0113
 TOBY & CHELSIE - 306 821 2071
 RYLEY & KAYLEE - 780 522 8385
 NEIL - 780 808 9082 JEFF - 306 821 4383
WWW.BLACKGOLDSIMMENTAL.COM

GREENWOOD CATTLE

- THE PAYNES -
 SCOTT & JACKIE
 JAYDEN, LEAH & MAEZIE
 JAXON & HALLEY
 SCOTT 306.825.4328, JAY 306.821.2260, JAX 306.830.0456
WWW.GREENWOODCATTLE.COM



Thank You
 TO ALL OF OUR PAST BUYERS



RETURN UNDELIVERABLE MAIL TO:

Black Gold Simmental
Box 593
Lloydminster, SK S9V 0Y7



RETURN POSTAGE GUARANTEED
PORT DE RETOUR GARANTI



OCTOBER 9, 2025
T H E E V O L U T I O N