



*Ontario's*  
Finest  
Red Angus  
SALE

September 30, 2023  
1 PM @ Hanover, ONT  
At Maple Auctions Ltd.

# Ontario's Finest Red Angus Sale

**September 30, 2023 at 1:00PM**

At Maplehill Auctions Ltd., Hanover, Ont. - Lunch at 12:00 PM.

Cattle will on Display September 29 at the Auction Mart  
with a supper at the mart Friday at 6 PM.

**OFFERING: 35 LOTS**  
**5 COW CALF PAIRS ♦ 12 BRED COWS**  
**12 BRED HEIFERS ♦ 4 HEIFER CALVES**  
**2 BULLS ♦ 3 SEMEN LOTS**

#### SALE DAY STAFF

Ryan Hurlburt Auctioneer (306)292-9812  
Andy McCullough (519)379-1370  
Gary Smart (519)372-7459  
Mark Shologan, DLMS (780)699-5082



#### SALE DAY PHONES

Mark Holowaychuk, OBI (403)896-4990  
Brenda Patchell (226)820-0899

#### SALE LOCATION

Maplehill Auctions Ltd. Hanover, Ont.  
(519)506-1400

#### SALE HOTEL

Best Western Plus, Walketon, Ont.  
(226)436-3030

Ask for the "Ontario's Finest Sale" Block of  
Rooms - See ad in the back of the catalog

#### TRUCKING

HS Knill Co. Ltd. (877)442-3106  
-See ad in the back of the catalog

### OBI LIVESTOCK LTD WELCOME

It is my pleasure to invite you all to the 1st Annual Ontario's Finest Red Angus Female Sale.

This sale was created in efforts to promote the Red Angus breed in Ontario again. OBI Ran sales back in the 2000's when we had the Autumn Colors sale with David Hasson and they were very well accepted. I would like to thank Bruce & Brenda Patchell for vision as well on this new endeavor.

The offering was personally selected for each operation involved. I really enjoyed my tours this past summer. The quality selected from each operation represents their programs to the finest. We have top end cows with their calves on offer along with some bred heifers that will be front pasture females for their new owners. There is heifer calves that will be competitive in the show ring as well as being foundation females. 2 future herd bull candidates as well being offered.

The Red Angus breed needs to be seen more in Ontario and this is a start to this process for all. We have DLMS and Knills Trucking to assist us at the sale.

If you need any assistance, please do not hesitate to call myself or any of the consignors directly. I will be at Hanover the entire day before the sale.



Mark Holowaychuk  
OBI Livestock Ltd.  
28 Glendale Blvd  
Red Deer, Ab. T4P 2P3

## Consignor Listing

**PATCHELL LIVESTOCK**  
Bruce & Brenda Patchell  
402034 Grey Road, RR#1  
Hanover, Ont. N4N 3B8  
Brenda (226)820-0899  
Lots 1 to 16

**VANCISE CATTLE CO. INC.**  
John Vancise Jr.  
1803 Fairgrounds Rd N  
Stayner, Ont. L0M 1S0  
(705)351-2442  
Lots 17 to 20

**BURNSIDE FARMS**  
Jim Linday & Julia Lindsay  
6235 Guelph St.  
Elora, Ont. N0B 1S0  
(519)820-6981  
Lots 21 to 23

**ROSEWOOD RED ANGUS**  
Kayla & Cody Walker  
Guelph, Ont.  
(519)731-2746  
Lot 24

**GRASSHILL RED ANGUS**  
Emily Wicks & Bowman  
Simpson  
2561 Pigeon Lake Road  
Bobcaygeon, Ont. K0M 1A0  
(705)328-5216  
Lots 25 to 29

**TJEPKEMA FARMS**  
Eugene & Suzanne Tjepkema  
1706 Hwy 54 East  
Caledonia, Ont. N3W 1W3  
(905)730-4005  
Lots 30 & 31

**LUPIN LANE RED ANGUS**  
Jonas Martin  
Matheson, Ont. (519)698-  
9970  
Lots 32 to 34

**KNOCKOUT CATTLE CO.**  
Andrew & Julianne Hodges  
2222 O'Toole Road  
Cumberland, Ont. K4C 1N3  
(819)208-0787  
Lot 35

**BOGLE PASS ANGUS**  
Anson Lewis  
392242 Grey Rd 109  
Holstein, Ont. N0G 2A0  
(519)323-7165  
Lots 36 to 38

# SELLING CHOICE

Service: Hand Bred April 29 to Red Wheel Ginger Nation 9K. Exposed from May 20 to July 1 to Red Wheel Ginger Nation 9K. Due Feb 6.

Parent Verified. Ayesha is a direct daughter of Red Towaw Indeed 104H, and a Granddaughter of our corner stone cow Red BWA Baroness 4P which you will see a lot in our feature lots. If you like big powerful cows here's one for you. Putting the fantastic pedigree aside and just analyze her big deep rib, nice fronted, set on good bone, big footed and just 4 years old. She has a whole life of producing calves like the one by her side now. She is bred to our new Herd Sire Red Wheel Ginger Nation 9K who is the son of the 2022 Agribition Grand Champion Red Angus Female, Red Wheel Ginger Barbie 1E.



**1** **RED PATCHELL *Ayesha***  
FEMALE BBP 20G JAN 9 2019 2102364

<b>SIRE</b>	RED CC EXPANSION 5E	RED ROCK CREEK TREK
	RED TOWAW INDEED 104H	RED COULEE CREST ANNETTE 4C
	RED TOWAW MOLLY 67C	RED ARSF BOLD EDITION 2A
<b>DAM</b>	RED TER-RON FULLY LOADED 540R	RED HEARTLAND KNIGHT CHARM 11L
	RED PATCHELL ARIZONA 2A	RED TER-RON GOLDIE 240L
	RED BWA BARONESS 4P	RED BAR-E-L MAJOR 4M
		RED CUMNOCK BARONESS 255H

BW	WW	CE	BW	WW	YW	MILK
85	-	0.0	2.2	39	61	21

**1a** **RED PATCHELL *Testa***  
FEMALE BBP 24L JAN 8 2023 2304812

<b>SIRE</b>	RED SLGN WIDELoad 920W	RED UBAR HIGH CAPACITY 224
	RED MANN RED BOX 55C	RED MEADO-WEST PERSUASION
	RED PELTON MISS AJA 0839U	RED 5L NORSEMAN KING 2291
<b>DAM</b>	RED TOWAW INDEED 104H	RED CC EXPANSION 5E
	RED PATCHELL AYESHA	RED TOWAW MOLLY 67C
	RED PATCHELL ARIZONA 2A	RED TER-RON FULLY LOADED 540R
		RED BWA BARONESS 4P

BW	WW	CE	BW	WW	YW	MILK
91	-	-4.0	4.2	48	83	23

Parent Verified. Testa is a heifer in my opinion just puts everything together. Long sided, deep rib, feminine fronted and a dream to work with. She was shown by our 9-year-old Granddaughter at the Red Angus Show and the heifer was an angel. Juniors and 4-H kids keep your eye on this one.



2



Service: A.I. on April 14 to Red NCJ Coming In Hot 24E. Exposed from May 20 to July 1 to Red Wheel Ginger Nation 9K.

**Due Jan 21.**

Parent Verified. Here's another pair we think the world of. Moanna's grandmother was a feature lot in Scott Graham's Dispersal a few years back. She is a typical Renown daughter you could sleep on her back she is so wide, but still maintains a feminine front. Moanna and her calf were named Senior Champion Female at the only Red Angus Show in Ontario.



SIRE

**2 RED PATCHELL *Moana***  
 FEMALE BBP 3G JAN 21 2019 2102362

<b>SIRE</b>	RED U-2 RECKONING 149A	RED U-2 RECON 192Y
	RED U-2 RENOWN 193C	RED U-2 ANEXA 271Y
	RED U-2 ENVIOUS 147X	RED U-2 DYNAMO 7021T
<b>DAM</b>	RED SILVEIRAS MISSION NEXUS	RED LJC MISSION STATEMENT P27
	RED PATCHELL'S NATASHA	RED SILVEIRAS DAORV 8399
	RED HARRON HANNAH 40R	RED HARRON HORIZON 21M
		RED HARRON N43

BW	WW	CE	BW	WW	YW	MILK
95	-	-4.0	5.2	43	71	23

**2a RED PATCHELL *Calla Lily***  
 FEMALE BBP 3L FEB 2 2023 2304811

<b>SIRE</b>	RRA AVIATOR 507	MUSGRAVE AVIATOR
	RED NCJ COMING IN HOT 24E	RED RRA RACHEL 246 746
	RED NCJ MINERVA 35C	RED NCJ LAZY MC VENOM 34Z
<b>DAM</b>	RED U-2 RENOWN 193C	RED NCJ MINERVA 13S
	RED PATCHELL MOANA	RED U-2 RECKONING 149A
	RED PATCHELL'S NATASHA	RED U-2 ENVIOUS 147X
		RED SILVEIRAS MISSION NEXUS
		RED HARRON HANNAH 40R

BW	WW	CE	BW	WW	YW	MILK
92	-	-5.0	5.0	53	90	24

Parent Verified. Here's a calf we just think the world of. She is just like her mom stout made, deep and nice fronted. We know there is a lot of Red NCJ Coming In Hot 24E out there, but she won't disappoint you when you analyze her. She is halter broke and ready for any Jr. to take her on.



SIRE



2a

EM

Service: A.I. on March 29 to Red Bieber Blue Chip H302. Exposed from May 20 to July 1 to Red Wheel Ginger Nation 9K.

Due Jan 6.

Parent Verified. Hey Hey is like her mother Moanna a very easy keeper. Not many two-year-olds can feed a calf with a weaning weight of 610 lbs. and maintain her condition the way she did.



SERVICE SIRE



3

**3** RED PATCHELL *Hey Hey*  
FEMALE BBP 3J FEB 3 2021 2193521

**SIRE** RED RINGSTEAD KARGO 107M RED COMPASS KARGO 83K  
RED RINGSTEAD KARGO 215U RED GET-A-LONG MRS. YOUNG 095  
RED RINGSTEAD MS EQUAL 589P RED SSS YUKON 440K  
RED SSS MISS EQUAL 495G

**DAM** RED U-2 RENOWN 193C RED U-2 RECKONING 149A  
RED PATCHELL MOANA RED U-2 ENVIOUS 147X  
RED PATCHELL'S NATASHA RED SILVEIRAS MISSION NEXUS  
RED HARRON HANNAH 40R

BW	WW	CE	BW	WW	YW	MILK
74	-	5.0	3.7	48	74	23

**3a** RED PATCHELL *Motunui*  
FEMALE BBP 30L JAN 13 2023 2304817

**SIRE** PATCHELL JOHN HENRY RED SIX MILE SIGNATURE 295B  
PATCHELL PRIDE WERNER BLACK ANGEL 1299  
RED PATCHELL FORGET ME NOT RED FINE LINE MULBERRY 26P  
RED PATCHELL ARIZONA 2A

**DAM** RED RINGSTEAD KARGO 215U RED RINGSTEAD KARGO 107M  
RED PATCHELL HEY HEY RED RINGSTEAD MS EQUAL 589P  
RED PATCHELL MOANA RED U-2 RENOWN 193C  
RED PATCHELL'S NATASHA

BW	WW	CE	BW	WW	YW	MILK
59	-	12.0	-0.7	42	67	22



3a

Parent Verified. Motunui is a fancy made individual who is writing her own legacy. She was Heifer Calf Champion at the only Red Angus Show in Ontario. She is halter broke and ready for any Jr. to take her on.

4

Service: Hand Bred April 24 to Red Wheel Ginger Nation 9K. Exposed from May 20 to July 1 to Red Wheel Ginger Nation 9K. Due Feb 1.

Parent Verified. When we first started in the Red Angus we purchased Red BWA Baroness 4P from the Gary Harron Dispersal. She was the foundation of our herd as you will see as you read the different pedigrees. Whiskey Lullaby is a direct daughter and like her mother she has been producing with out a miss. Whiskey Lullaby is a large framed cow that is very sound with a nice udder. Our Fully Loaded Females are great milkers.



SERVICE SIRE



SIRE

**4** RED PATCHELL *Whiskey Lullaby*  
FEMALE BBP 120G JAN 3 2019 2102366

- |             |                                |                            |
|-------------|--------------------------------|----------------------------|
| <b>SIRE</b> | RED HEARTLAND KNIGHT CHARM 11L | RED YY RED KNIGHT 640F     |
|             | RED TER-RON FULLY LOADED 540R  | RED CARRUTHERS TRIBECCA 7F |
|             | RED TER-RON GOLDIE 240L        | RED LAZY MC DIVIDE 8J      |
| <b>DAM</b>  | RED BAR-E-L MAJOR 4M           | RED YY RED KNIGHT 640F     |
|             | RED BWA BARONESS 4P            | RED BAR EL THELMA 9F       |
|             | RED CUMNOCK BARONESS 255H      | RED LEACHMAN TOP GUN 1950D |
|             |                                | RED CUMNOCK BARONESS 542C  |

BW	WW	CE	BW	WW	YW	MILK
89	-	1.0	2.3	35	56	17

**4a** RED PATCHELL *Angel Wing*  
FEMALE BBP 12L MAR 3 2023 2304813

- |             |                               |                                |
|-------------|-------------------------------|--------------------------------|
| <b>SIRE</b> | RED YCLC COPENHAGEN 653C      | RED U-2 AUTHENTIC 139A         |
|             | RED U2 NOVA 627F              | RED YCLC 7H COUNTESS 265Z      |
|             | RED U-2 LADY 368C             | RED U-2 RECON 192Y             |
| <b>DAM</b>  | RED TER-RON FULLY LOADED 540R | RED HEARTLAND KNIGHT CHARM 11L |
|             | RED PATCHELL WHISKEY LULLABY  | RED TER-RON GOLDIE 240L        |
|             | RED BWA BARONESS 4P           | RED BAR-E-L MAJOR 4M           |
|             |                               | RED CUMNOCK BARONESS 255H      |

BW	WW	CE	BW	WW	YW	MILK
85	-	-4.0	3.9	49	74	21

Parent Verified. This March Nova Baby is a fancy as the come halter broke and ready for any JR showperson to take her on to the shows. She is halter broke and ready for any Jr. to take her on.



SIRE



4a

Parent Verified. Yankee's mother is a Red Mann Red Box 55C X Red WSF MS Yankee 13T 12W from Blair. Ag. She grew out quite well. Bred to a calving ease bull Red Bieber Blue Chip H302. We are extremely pleased with the Blue Chip calves. They have both performance and style. Weaning weight Aug 15 was 680 lbs. Red Patchell Yankee is the first Blue Chip calf to sell in Canada. She is halter broke and ready for any Jr. to take her on.



SIRE - LOTS 5 & 6



5

5

## RED PATCHELL *Yankee*

FEMALE BBP 178L JAN 18 2023 2304822

SIRE

RED BIEBER CL STOCKMARKET E119 RED PIE STOCKMAN 4051  
RED BIEBER BLUE CHIP H302 RED BIEBER CL ADELLE 475C  
RED BIEBER ROSE 162C RED BIEBER IRON ORE A104  
RED BIEBER ROSE 475A

DAM

RED MANN RED BOX 55C RED SLGN WIDELOAD 920W  
RED BLAIR'S YANKEE 178J RED PELTON MISS AJA 0839U  
RED WSF MS YANKEE 13T 12W RED BRYLOR/WSP KARWEIK 1P  
RED FINE LINE YANKEE 13T

BW	WW	CE	BW	WW	YW	MILK
69	-	6.0	0.3	44	76	23

6

## RED PATCHELL *Denali*

FEMALE BBP 32L JAN 25 2023 2304819

SIRE

RED BIEBER CL STOCKMARKET E119 RED PIE STOCKMAN 4051  
RED BIEBER BLUE CHIP H302 RED BIEBER CL ADELLE 475C  
RED BIEBER ROSE 162C RED BIEBER IRON ORE A104  
RED BIEBER ROSE 475A

DAM

CAJUN FLAT TOP 3G WERNER FLAT TOP 4136  
RED CAJUN CFT SIERRA 32J CAJUN T MAGGI 9A  
CAJUN NW SIERRA 42F S A V NET WORTH 4200  
CAJUN SIERRA 33S

BW	WW	CE	BW	WW	YW	MILK
79	-	4.0	1.7	49	89	27

Lots 5 & 6 are the first 2 heifer calves ever offered from Red Bieber Blue Chip H302 in Canada.

Parent Verified. Denali's mother has a unique pedigree coming from an almost all black pedigree. Her mom has exceptional udder quality. We showed her and mom at the Red Angus show in Hanover and they won the 2 Yr. old division and went on to be Reserve Senior Champion. This calf is stout and deep. Being a dark Cherry Red makes her stand out. She is also the first Blue Chip calf to sell in Canada. This heifer is halter broke and ready for a Jr. to take her on. Weaning weight Aug 15 was 701 lbs.

6



**Service:** A.I. on March 31 to Red DMM Rumble 74J. Exposed from May 20 to July 1 to Red Wheel Ginger Nation 9K. Due Jan 7. Parent Verified. Flair is an ET daughter from our Halo cow family. Dark Cherry Red with big spring of rib and starting to set down a nice udder. There is a good foot under this heifer. Bred Red DMM Rumble 74J who was a many times Champion at the major western shows in 2022.



SERVICE SIRE



DAM

**7 RED PATCHELL *Flair***  
FEMALE ET BBP 23K JAN 13 2022 2278960

<b>SIRE</b>	RED WILD ROSE ROBIN HOOD 11F	RED LMAN ROBIN HOOD 1174B
	RED NORTHLINE ROB ROY 122K	RED SSS GOLD EDGE 363X
	RED BAR EL SYBIL 122E	RED MIQUELON BUTCH 9B
<b>DAM</b>	RED SIX MILE SIGNATURE 295B	RED SIX MILE GRAND SLAM 130Z
	PATCHELL HALO	RED SELMA OF SIX MILE 358X
	WERNER BLACK ANGEL 1299	S A V NET WORTH 4200
		CLEARWATER BLACK ANGEL 395

BW	WW	CE	BW	WW	YW	MILK
83	-	4.0	2.3	39	76	34

**8 RED PATCHELL *Jershika***  
FEMALE BBP 5K JAN 2 2022 2251946

<b>SIRE</b>	RRA AVIATOR 507	MUSGRAVE AVIATOR
	RED NCJ COMING IN HOT 24E	RED RRA RACHEL 246 746
	RED NCJ MINERVA 35C	RED NCJ LAZY MC VENOM 34Z
<b>DAM</b>	RED SIX MILE SIGNATURE 295B	RED SIX MILE GRAND SLAM 130Z
	PATCHELL NEON MOON 5F	RED SELMA OF SIX MILE 358X
	WERNER BLACK ANGEL 1299	S A V NET WORTH 4200
		CLEARWATER BLACK ANGEL 395

BW	WW	CE	BW	WW	YW	MILK
83	722	3.5	1.7	50	89	24

**Service:** A.I. on March 29 to Red U-2 Reckoning 149A. Exposed from May 20 to July 1 to Red Wheel Ginger Nation 9K. Due Jan 5.

Parent Verified. Jershika is just one of our females that is front pasture material. When you look at this pedigree it reads a little different. She is a granddaughter of the infamous Werner Black Angel 1299 cow with 88 registered offspring and only 14 yrs. old and still active in the Angus world. Jershika was a many times calf champion, highlighted by being calf champion at Brampton Preview Show. Her first show this year in Hanover she was Reserve Yearling and Reserve Grand Champion Female. Mated to the cross Six Mile used so successfully U-2 Reckoning and Coming In Hot should make for a very powerful calf. She just keeps getting better with age.



SIRE



**9** *RED JAM First Edition 2H*  
FEMALE MAJ 2H JAN 1 2020 2171140

**SIRE** RED COCKBURN RIBEYE 308U RED BAR-E-L RIBEYE 103R  
RED SOO LINE POWER EYE 161X RED WILBAR CORA 443P  
RED TR LYNN 301R RED GEIS KNIGHT HAWK 14'02  
TR LYNN 105L

**DAM** RED PATCHELL'S CRACKER JACK RED LAZY MC CC DETOUR 2W  
RED MACK'S LADY 2E RED BBP CRACKER 5Z  
RED MACK'S LADY 86W RED GOLD-BAR SGT MAJOR 122S  
RED MACK'S LADY 21R

BW	WW	CE	BW	WW	YW	MILK
-	-	4.0	0.3	38	63	20

**Service:** A.I. on March 25 to Red NCJ Coming In Hot 24E. Exposed from May 20 to July 1 to Red Wheel Ginger Nation 9K. Due Jan 2.

First Edition is another 3 Yr. old with a different style about her. Edition is a large framed gem that can feed a calf weaning off a nearly 800 lb. heifer calf. She is very fertile and catches first service every time. I think being bred Coming In Hot should match up very well.



SIRE - LOTS 9 & 10

**10** *RED PATCHELL One Sent From Heaven*  
FEMALE BBP 15H JAN 5 2020 2156224

**SIRE** RED COCKBURN RIBEYE 308U RED BAR-E-L RIBEYE 103R  
RED SOO LINE POWER EYE 161X RED WILBAR CORA 443P  
RED TR LYNN 301R RED GEIS KNIGHT HAWK 14'02  
TR LYNN 105L

**DAM** RED BBP SOLO CUP 6Z RED TER-RON FULLY LOADED 540R  
RED PATCHELL'S FAVORITE SODA RED BWA BARONESS 4P  
RED BAR 5 FAVORITE 2204W RED BAR 5 AR WAREHOUSE 244R  
RED BRYLOR SDL PASSION 225P

BW	WW	CE	BW	WW	YW	MILK
83	676	3.0	1.9	45	73	22

**Service:** A.I. on March 28 to Red NCJ Coming In Hot 24E. Exposed from May 20 to July 1 to Red Wheel Ginger Nation 9K. Due Jan 4.

Parent Verified. Heaven is a moderate framed Power Eye Daughter with a ton of milk. She weaned off an almost 800 lb. bull calf. Her mother was selected by Mike Geddes to go in a package of cow calf pairs from our farm to Balamore Farms in Nova Scotia.



10

**11** *RED PATCHELL Anna*  
FEMALE BBP 25H JAN 15 2020 2156160

**SIRE** RED COMPASS MULBERRY 449M RED HR RAMBO ET 91K  
RED FINE LINE MULBERRY 26P RED BRYLOR MISS ROC 20H  
RED DUS FAYETTE 8G RED SILVEIRAS REDFORD  
RED MC DOUGALL FAYETTE 59A

**DAM** RED TER-RON FULLY LOADED 540R RED HEARTLAND KNIGHT CHARM 11L  
RED BBP PISTOL ANNIE 2Z RED TER-RON GOLDIE 240L  
RED BWA BARONESS 4P RED BAR-E-L MAJOR 4M  
RED CUMNOCK BARONESS 255H

BW	WW	CE	BW	WW	YW	MILK
62	522	5.0	1.9	40	70	19

**Service:** A.I. on March 26 to Red DMM Rumble 74J. Exposed from May 20 to July 1 to Red Wheel Ginger Nation 9K. Due Jan 3.

Parent Verified. You talk about a very beautiful silhouette here is one. Very Sleak in her design, long fronted, long body and a nice udder to boot. When anyone walks through the pasture Anna always grabs their attention. If selling Bulls is your thing she can make them right, with her first two calves making the cut for the bull test pen. Anna is bred to the 2022 Agribition Grand Champion Bull in the Red Angus Show, Red DMM Rumble 74J. This should make for a very exciting cross.



SIRE



12

**12 RED GRIST *Floress* 117H**  
 FEMALE GRFA 117H JAN 17 2020 2169875

**SIRE** RED LJC LANCER 806 RED BECKTON LANCER T A664  
 RED LJC MISSION STATEMENT P27 RED LJC HB LIZZIE 606  
 RED LJC HANNAH 106 RED HOLDEN HI HO 753  
 RED LJC KJ JAMIE 516

**DAM** RED MAJESTIC RUBICON N 124R RED GOLD-BAR SCF NITRO K 112N  
 RED MAJESTIC FLORESS R 111U RED BRA SIERRA 243M  
 RED SOO LINE FLORESS 4510 RED DWAJO GLADIATOR 32L  
 RED LPC FLORESS JULIA 45K

BW	WW	CE	BW	WW	YW	MILK
98	-	2.0	2.7	56	98	19

**Service: A.I. on April 4 to Red Minburn Copenhagen 3Y. Exposed from May 20 to July 1 to Red Wheel Ginger Nation 9K. Due Jan 11.**

Parent Verified. Here's another 3 yr. old just coming to the prime of her life. Her Bull from last year came off test with nice numbers. Mated to Red Minburn Copenhagen 3Y should give balance to her EPD's.



13

**13 RED TJEPKEMA *Bonnie Rose***  
 FEMALE TFF 1J JAN 3 2021 2186739

**SIRE** RED SILVEIRAS MISSION NEXUS RED LJC MISSION STATEMENT P27  
 RED PATCHELL'S KION RED SILVEIRAS DAORV 8399  
 RED PATCHELL'S KASSIE 10B RED NORTHLINE ROB ROY 122K  
 RED BAR-E-L KASSIE 3P

**DAM** RED BECKTON HERITAGE B500 J4 RED BECKTON HERITAGE X403 L3  
 RED BURRILL BONNIE BELLE 7F RED BECKTON SUSAN P857 JO  
 RED VANCISE BONNIE BELLE 167D RED SSS AMBITION 259Z  
 RED VANCISE BONNIE BELLE 167Z

BW	WW	CE	BW	WW	YW	MILK
-	-	7.0	-1.3	26	47	28

**Service: A.I. on April 9 to Red Bieber Blue Chip H302. Exposed from May 20 to July 1 to Red Wheel Ginger Nation 9K. Due Jan 16.**

This is a 2 yr. old that just put everything together for me conformation wise. Very nice udder and teat size. Could use a little more Frame for my liking, otherwise tough to pick a hole in.



14

**14 RED EXCEL *Barb* 047H**  
 FEMALE XLR 047H FEB 8 2020 2172829

**SIRE** RED TR LITTLE DEEP 285B RED BIEBER ROLLIN DEEP Y118  
 RED HAZEL BLUFF DEEP 91E RED TR MISS PATHY 1170Y  
 RED KBJ MISSIE 019Z RED COCKBURN RIBEYE 308U  
 RED KBJ MISSIE 1040S

**DAM** RED GLESBAR CAPONE 28Y RED NORTHLINE FAT TONY 605U  
 RED EXCEL BARB 647D RED GLESBAR SYRINGA 43R  
 GLESBAR BARB 28Z RED GLESBAR EXCEL 11R  
 GLESBAR BARB 31J

BW	WW	CE	BW	WW	YW	MILK
76	-	-6.0	4.3	42	65	27

**Service: A.I. on April 3 to Red NCJ Coming In Hot 24E. Exposed from May 20 to July 1 to Red Wheel Ginger Nation 9K. Due Jan 10.**

Barb is another 3 yr. old that just puts everything into that calf. She had a bull calf that weaned over 700 lbs. and will go into the bull pen for the winter.

Parent Verified. In the past year or two we have been selling embryos from Patchell's Halo X Rob Roy. Here is a son of theirs. These Halo calves have a little more frame, big spring of rib, dark red and as long a train. Rocket Man was a many times champion as a calf and won the yearling champion bull and went on to be Reserve Supreme Champion Bull at the Hanover Fair this year. He is a Jan yearling and weighed 1867 lbs. on July 22.



DAM - LOTS 15 & 16

## 15 RED JAM *Rocket Man*

MALE ET MAJ 2K JAN 7 2022 2278962

SIRE	RED WILD ROSE ROBIN HOOD 11F	RED LMAN ROBIN HOOD 1174B
	RED NORTHLINE ROB ROY 122K	RED SSS GOLD EDGE 363X
	RED BAR EL SYBIL 122E	RED MIQUELON BUTCH 9B
DAM	RED SIX MILE SIGNATURE 295B	RED SIX MILE GRAND SLAM 130Z
	PATCHELL HALO	RED SELMA OF SIX MILE 358X
	WERNER BLACK ANGEL 1299	S A V NET WORTH 4200
		CLEARWATER BLACK ANGEL 395

BW	WW	CE	BW	WW	YW	MILK
83	844	4.0	2.3	39	76	34

## 16 RED PATCHELL *Spike*

MALE ET BBP 22L JAN 11 2023 2304810

SIRE	RRA AVIATOR 507	MUSGRAVE AVIATOR
	RED NCJ COMING IN HOT 24E	RED RRA RACHEL 246 746
	RED NCJ MINERVA 35C	RED NCJ LAZY MC VENOM 34Z
DAM	RED SIX MILE SIGNATURE 295B	RED SIX MILE GRAND SLAM 130Z
	PATCHELL HALO	RED SELMA OF SIX MILE 358X
	WERNER BLACK ANGEL 1299	S A V NET WORTH 4200
		CLEARWATER BLACK ANGEL 395

BW	WW	CE	BW	WW	YW	MILK
96	-	0.0	2.9	55	97	26



Parent Verified. Spike is a bull calf with a little different twist being a son of Halo. Halo is our daughter of the Werners Black Angel 1299. Halo puts her stamp on the bulls. They are stout made and big nutted. Halo has a son walking the purebred pastures doing the job for Tjepkema Family Farm. This cow hasn't missed yet. Spike was Calf Champion and Reserve Grand Champion at the Hanover Show. He has a weaning weight of 935 on Aug 15.



SIRE



17

Service: Observed Bred on April 5 to Red Vancise Chief 834G. Exposed from April 11 to Aug 1 to Red Vancise Chief 834G. Due Mid Feb.

A very stylish, Sharp fronted type female, with a tidy udder and slender teat size. Her sire Spur Gravity is a bull I purchased out of the yards in Denver, 2016. He and his mates where the Reserve Champion Pen of Red Angus bulls.



SIRE IN PEN OF THREE

**17** RED VANCISE *Lakota* 1225G

FEMALE CISE 1225G MAR 20 2019 2092464

<b>SIRE</b>	RED HCFA GRAVITY 601	RED LCC GRAVITY B252L
	RED SPUR GRAVITY 601 2507C	RED BJR MS STONY 4X-516
	RED BECKTON SUFFEINA W600 W	RED BECKTON WARRIOR C1 S337
<b>DAM</b>	RED SSS AMBITION 259Z	RED BKT SUFFEINA S624 EP
	RED VANCISE LAKOTA 1525C	RED SSS AMBUSH 771X
	RED VANCISE LAKOTA 525X	RED SSS ROSE 347W
		RED SSS JOE COOL 441S
		RED GNG LAKOTA 225P

BW	WW	CE	BW	WW	YW	MILK
75	-	-5.0	3.0	48	80	23

**17a** RED VANCISE *Lakota* 625L

FEMALE CISE 625L JAN 15 2023 APPLIED FOR

<b>SIRE</b>	RED SSS GRAVITY 296E	RED SSS BIG GAME 814A
	RED VANCISE MOUNTAINEER 001H	RED SSS LASS 704A
	RED VANCISE EMPRESS 001C	RED SSS AMBITION 259Z
<b>DAM</b>	RED SPUR GRAVITY 601	RED VANCISE EMPRESS 401Z
	RED VANCISE LAKOTA 1225G	RED HCFA GRAVITY 601
	RED VANCISE LAKOTA 1525C	RED BECKTON SUFFEINA W600 W
		RED SSS AMBITION 259Z
		RED VANCISE LAKOTA 525X

BW	WW	CE	BW	WW	YW	MILK
89	-	-9.5	3.1	40	74	14

625L is very complete young female who is starting to display the same shape featured look that her mother possesses.



17a

**18** **RED VANCISE *Lena* 238K**  
 FEMALE CISE 238K FEB 19 2022 2286225

**SIRE** RED SSS GRAVITY 296E RED SSS BIG GAME 814A  
 RED VANCISE GRAVITY 3125G RED SSS LASS 704A  
 RED VANCISE LAKOTA 225C RED SSS AMBITION 259Z  
 RED GNG LAKOTA 025P

**DAM** RED VANCISE UMPIRE 201B RED GNG UMPIRE 124N  
 RED VANCISE LENA 738F RED VANCISE EMPRESS 701Z  
 RED VANCISE LENA 138W RED SSS JOE COOL 441S  
 RED VANCISE LENA 138S

BW	WW	CE	BW	WW	YW	MILK
82	627	0.0	1.3	32	55	24

Service: Observed Bred on May 6 to Red Vancise Galaxy 2265K. Exposed from May 24 to Aug 1 to Red Vancise Galaxy 2265K. Due Mid Feb.

238K is an extremely long bodied nice fronted daughter of the 3125G, a bull that saw heavy service here the past few years. 238K's mother is a very stylish female that always weans a heavy one, and looks good doing it!



**19** **RED VANCISE *Leanne* 638K**  
 FEMALE CISE 0638K MAR 6 2022 APPLIED FOR

**SIRE** RED SSS GRAVITY 296E RED SSS BIG GAME 814A  
 RED VANCISE MOUNTAINEER 001H RED SSS LASS 704A  
 RED VANCISE EMPRESS 001C RED SSS AMBITION 259Z  
 RED VANCISE EMPRESS 401Z

**DAM** RED SPUR GRAVITY 601 RED HCFA GRAVITY 601  
 RED VANCISE LENA 638G RED BECKTON SUFFEINA W600 W  
 RED VANCISE LENA 738C RED VANCISE DOUBLE DOWN 725Y  
 RED VANCISE LENA 538A

BW	WW	CE	BW	WW	YW	MILK
78	694	-7.0	4.1	32	59	25

Service: A.I. on April 23 to Red Vancise Dynamo 538G. Exposed from May 24 to Aug 1 to Red Vancise Galaxy 2265K. Due Late Jan.

0638K is A very elegant made, big middled, well balanced Mountaineer daughter with a promising udder development. Mountaineer is a strong breeding bull off the SSS Gravity bull, out of a gem of an Ambition daughter.



**20** **RED VANCISE *Lassie* 227L**  
 FEMALE CISE 227L FEB 28 2023 2317084

**SIRE** RED SPUR GRAVITY 601 2507C RED HCFA GRAVITY 601  
 RED VANCISE DUKE 40G RED BECKTON SUFFEINA W600 W  
 RED SSS DUCHESS 40Y RED SSS NORTH 26U  
 RED SSS DUCHESS 223U

**DAM** RED SSS AMBITION 259Z RED SSS AMBUSH 771X  
 RED VANCISE LASSIE 227D RED SSS ROSE 347W  
 RED TVFS LASSIE 227W RED VANCISE DOUBLE DOWN 725Y  
 RED VANCISE LENA 538A

BW	WW	CE	BW	WW	YW	MILK
98	-	-9.0	5.4	44	74	28

This cherry red young lady is a real chip off the old block, a tank in the making. Her dam is a very powerful female that has raised us 5 consecutive bull calves. This cow family raises top end progeny every year, the ones that perform.



# Burnside Farms/Rosewood Red Angus



**Service:** Exposed from May 8 to July 20 to Red Kenray EW Understudy 44K. **Due Mid Feb.**  
 Cow future right here! Sired by our Red DKF Red Man 33F bull that we own with Rosewood Red Angus and out of one of our many cows that go back to Bogle Pass Tina.10K's mother is a cow that catches everyone's eye with her solid body and sound attractive udder. She is bred to Red Kenray EW Understudy 44K, our newest bull at Burnside.10K is a 4-H project and entered in the Royal Jr. Show this fall. We will keep her until that show is over and make delivery arrangements after.



**21** **RED BSFA *Tina* 10K**  
 FEMALE BSFA 10K FEB 5 2022 2289134

<b>SIRE</b>	RED DKF RAZOR 55C	DKF ELIMINATOR 15A
	RED DKF RED MAN 33F	DKF MISS NET WORTH 21A
	RED BLU DAWN MISS ILLICIT 359Z	RED U-2 ILLICIT 423P
<b>DAM</b>	RED BROX CARTER 13C	RED ANCHOR 1 HITCH 38T
	RED BSFA TINA 46E	RED BROX OAKLEAF 130U
	RED BSFA TINA 61B	RED BROX WHOS WHO 33W
		RED BOGLE PASS WW TINA

BW	WW	CE	BW	WW	YW	MILK
88	694	-	-	-	-	-

**22** **RED BSFA WILDWILLOW *Pearl* 35K**  
 FEMALE BSFA 35K MAR 3 2022 2289138

<b>SIRE</b>	RED DKF RAZOR 55C	DKF ELIMINATOR 15A
	RED DKF RED MAN 33F	DKF MISS NET WORTH 21A
	RED BLU DAWN MISS ILLICIT 359Z	RED U-2 ILLICIT 423P
<b>DAM</b>	RED BSFA CALIBER 70C	RED BROX WHOS WHO 33W
	RED BSFA WILDWILLOW PEARL 55G	RED GOLD-BAR LAKOTA MAN 104P
	RED BSFA WILDWILLOW PEARL 4E	RED BROX BIGLEY 12B
		RED BSFA WILDWILLOW PEARL 2X

BW	WW	CE	BW	WW	YW	MILK
80	535	-	-	-	-	-

**Service:** A.I. on May 4 to Red Dahlke Outcome 16H. Exposed from May 8 to July 20 to Red Kenray EW Understudy 44K. **Due Early Feb.**  
 This heifer comes from the Pearl family, one that comprises a large portion of our herd here at Burnside.35K's Grand Dam 4E was shown successfully in the 4-H program, and has raised many impressive females herself. This is one that is very quiet and has cow maker written all over her. Sired by Red Man 33F makes her one that we would rather have kept at home. She was A.I. to the Semex bull, Red Dahlke Outcome O16H that is a huge calving ease bull with a -6.0 BW and is deep cherry red.



# Burnside Farms/Rosewood Red Angus

**Service:** Exposed from May 8 to July 20 to Red Kenray EW Understudy 44K.

**Due Mid Feb.**

The youngest female of our offering, but don't let her age fool you. 57K has one powerful milking mother who knows how to raise calves. Another out of the cow family from Bogle Pass Tina, she is a 7/8 sister to our 10K entry in today's sale. The only difference is a little bit of Hobo bloodline showing up from a Walnut Hill bull we used briefly and should have used more often!



SIRE



23

23

## RED BSFA *Tina* 57K

FEMALE BSFA 57K MAY 10 2022 2289148

SIRE

RED DKF RAZOR 55C  
RED DKF RED MAN 33F  
RED BLU DAWN MISS ILLICIT 359Z

DKF ELIMINATOR 15A  
DKF MISS NET WORTH 21A  
RED U-2 ILLICIT 423P  
RED BLU DAWN MISS ROBBIE 395T

DAM

RED WALNUT HILL HOBO SW 112A  
RED BSFA TINA 54D  
RED BSFA TINA 61B

RED VANCISE STEAM WHISTLE 634W  
RED SWAN CREEK MISS HOBO 115S  
RED BROX WHOS WHO 33W  
RED BOGLE PASS WW TINA

BW	WW	CE	BW	WW	YW	MILK
94	590	-	-	-	-	-

24

## RED ROSEWOOD *Favorite* 5K

FEMALE RWRA 5K JAN 3 2022 2326752

SIRE

RED BIEBER ROLLIN DEEP Y118  
RED BIEBER LET'S ROLL B563  
RED BASIN PRIMROSE 2043

RED BIEBER ROOSEVELT W384  
RED BIEBER TILLY 399W  
RED BFCK CHEROKEE CNYN 4912  
RED BASIN PRIMROSE 0854

DAM

RED BROX CARTER 13C  
RED ROSEWOOD FAVORITE 1G  
RED KENRAY FAVORITE 70D

RED ANCHOR 1 HITCH 38T  
RED BROX OAKLEAF 130U  
RED SSS STAUNCH 64Y  
RED K F FAVORITE 20A

BW	WW	CE	BW	WW	YW	MILK
82	565	-	-	-	-	-

**Service:** Exposed from May 8 to July 20 to Red Kenray EW Understudy 44K.

**Due Mid March.**

Something different in this one sired by BIEBER LET'S ROLL! She is a very attractive sound female going back to my first cow purchased from the good people at Kenray. 70D has left me several replacement heifers as well as some solid bulls. Exposed to the Kenray 44K bull that Burnside Red Angus purchased in the Kenray Bull Sale this spring, 5K is being used as a 4-H project this fall and is entered in the Royal Jr. Show. We will keep her until that show is over and make delivery arrangements then.

24



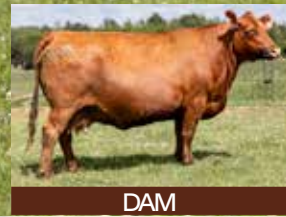
SIRE



# Grasshill Red Angus



**Service: Exposed from June 3 to Aug 15 to Red Ginn New Trend Count 6G. Due Mid to late March.**  
 Red Grasshill Wendy 106J is a very pretty, correct young cow with loads of potential and a perfect udder! Her dam pictured here is one of my best females at the farm. Great depth of body and 106J will turn into her mother down the road.  
**Sells with a gorgeous heifer calf, Red Grasshill Wanda 32L, sired AI by Red Pelton Statement 225W. Born March 29/23 BW 70lbs.**  
 Vaccinated with Triangle 10 and Tasvax July 24/23.



**25 RED GRASSHILL Wendy 106J**  
 FEMALE GRAS 106J MAR 20 2021 2210866

- |             |                        |                              |
|-------------|------------------------|------------------------------|
| <b>SIBS</b> | RED BROX BIGLEY 12B    | RED GET-A-LONG SIGNATURE 640 |
|             | RED BSFA FERGUS 75F    | RED VIKSE MISS 112S          |
|             | RED BSFA SPIRIT 60Z    | RED BROX WHOS WHO 33W        |
| <b>DAM</b>  | RED MEM MULBERRY 207X  | RED MAJESTIC SPIRIT N 205S   |
|             | RED WHIRR OF EXUMA 25Z | RED FINE LINE MULBERRY 26P   |
|             | RED EXUMA WHIRR 94W    | RED MEM COUNTESS 19K         |
|             |                        | RED LAZY MC CRASH 37R        |
|             |                        | RED SHODEREE FRITILLARY 22J  |

BW	WW	CE	BW	WW	YW	MILK
78	-	-1.0	3.3	35	56	15

**26 RED GRASSHILL Marilyn 110J**  
 FEMALE GRAS 110J APR 9 2021 2210881

- |             |                            |                              |
|-------------|----------------------------|------------------------------|
| <b>SIBS</b> | RED BROX BIGLEY 12B        | RED GET-A-LONG SIGNATURE 640 |
|             | RED BSFA FERGUS 75F        | RED VIKSE MISS 112S          |
|             | RED BSFA SPIRIT 60Z        | RED BROX WHOS WHO 33W        |
| <b>DAM</b>  | RED LAZY MC HONKY TONK 11X | RED MAJESTIC SPIRIT N 205S   |
|             | RED GRASSHILL MONKEY 41B   | RED LAZY MC COWBOY CUT 26U   |
|             | RED MISS OF EXUMA 14Y      | RED YY PATTY 701T            |
|             |                            | RED SHODEREE BREAKER 28W     |
|             |                            | RED UMIS OF EXUMA 85U        |

BW	WW	CE	BW	WW	YW	MILK
78	-	0.0	2.2	34	59	11

**Service: Exposed from June 3 to Aug 15 to Red Ginn New Trend Count 6G. Due Mid April.**  
 Lots of power and functionality in this young ranch raised cow. Another daughter from a cow that is one of my top females in the herd.  
**Sells with a nice bull calf, Red Grasshill Revalation 350L, sired AI by Red Dahlke Rockefeller 009H. Born May 15/23 BW 78 lbs.**  
 Vaccinated with Triangle 10 and Tasvax July 24/23.





## 27 RED GRASSHILL *Songbird* 207H

FEMALE GRAS 207H APR 2 2020 2150084

DAM	RED LAZY MC COWBOY CUT 26U	RED LAZY MC STOUT 30S
	RED LAZY MC HONKY TONK 11X	RED LAZY MC STAR 185M
	RED YY PATTY 70IT	CROWFOOT 4130P
		RED BWA PATTY 10R
DAM	RED SIX MILE TIMBERLINE 880W	RED SIX MILE TIMBERLAKE 180T
	RED GRASSHILL SUNSHINE 42B	RED SIX MILE FLOWER 713S
	RED MISS OF EXUMA 20Z	RED MEM MULBERRY 207X
		RED XANTIPPE OF EXUMA 81X

BW	WW	CE	BW	WW	YW	MILK
70	586	9.0	-1.5	43	64	21

**Service:** Exposed from June 3 to Aug 15 to Red Ginn New Trend Count 6G. Due Mid to late March.

Red Grasshill Songbird 207H is a visually stunning young cow who has exceptional calving ease, being in the top 3% of the breed for maternal and top 10% for low birth weights. A deep broody cow with an excellent udder and is made so right.

**Sells with a grassfed steer calf GRAS 34L born April 6/23 BW 76lbs.**

Vaccinated with Triangle 10 and Tasvax July 24/23.



## 28 RED GRASSHILL *Kitkat* 914G

FEMALE GRAS 914G APR 17 2019 2110196

SIRE	RED RRAR CHIEF 33U	RED SOO LINE CHIEF 510S
	RED RRAR PALERMO 20Y	RED RRAR BARONETTE 14R
	RED RRAR TEDDY 26S	RED SODER CANYON 126M
		RED LEN-BAR BETTY 151K
DAM	RED GRASSHILL XTARGETX 45B	RED SIX MILE TIMBERLINE 880W
	RED GRASSHILL KARA 79E	RED ZONE OF EXUMA 22Z
	RED GRASSHILL KANDY B 342A	RED SHODEREE BREAKER 28W
		RED EXUMA WENDY 95W

BW	WW	CE	BW	WW	YW	MILK
86	591	-7.0	4.7	52	86	27

**Service:** Exposed from June 3 to Aug 15 to Red Ginn New Trend Count 6G. Due late March.

Red Grasshill KitKat 914G is a lovely, quiet natured cow with excellent growth traits, being in the top 10 and 15% of the breed for weaning and yearling weights and top 20% for marbling.

**Sells with a great looking bull calf, Red Grasshill Rock 'It 340L, sired AI by Red Dahlke Rockefeller 009H.**

Born April 11/23 BW 94 lbs.



## 29 RED GRASSHILL *Starlet* 921G

FEMALE GRAS 921G JUN 28 2019 2110190

SIRE	RED SIX MILE TIMBERLINE 880W	RED SIX MILE TIMBERLAKE 180T
	RED GRASSHILL XTARGETX 45B	RED SIX MILE FLOWER 713S
	RED ZONE OF EXUMA 22Z	RED MEM MULBERRY 207X
		RED XBONE OF EXUMA 01X
DAM	RED TER-RON FULLY LOADED 540R	RED LAZY MC HONKY TONK 11X
	RED GRASSHILL STARSHIP 682D	RED ULACE OF EXUMA 83U
	RED GRASSHILL STARLET B 340A	RED SHODEREE BREAKER 28W
		RED UMISS OF EXUMA 81U

BW	WW	CE	BW	WW	YW	MILK
80	-	0.0	-0.3	35	49	29

**Service:** Exposed from June 3 to Aug 15 to Red Ginn New Trend Count 6G. Due late March.

Red Grasshill Starlet 921G is a great overall cow with depth, style and a lovely udder.

**Sells with an exciting bull calf prospect at her side, Red Grasshill Stormy Night 39L, sired AI by Red Bieber Stormer Z433. Born April 10/23 BW 86lbs.**

Vaccinated with Triangle 10 and Tasvax July 24/23.



**Service: A.I. on March 29 to Red Six Mile Mossy Oak 175H. Safe to A.I. Date.**

**Due Jan 4.**

This heifer was hard for us to let go. Brie is a smooth made, feminine heifer that will go out and produce calving ease herd sires and replacement females. She has lots of potential starting from the ground up with a very strong genetic line with her sire RED RRA ONE AND ONLY 733. Brie is safe to her AI breeding to RED SIX MILE MOSSY OAK 175H son of the famous RED SIX MILE JOHN WICK 882E. This is going to make for an exciting calf. Brie is halter broke and easy to lead.



30



SERVICE SIRE



SIRE

30

## RED TJEPKEMA *Brie*

FEMALE TFF 1K JAN 1 2022 2256085

SIRE

RED PIE ONE OF A KIND 352  
RED RRA ONE AND ONLY 733  
RED WCR MISS BLACKBIRD DE 510Y

RED BUF CRK THE RIGHT KINDU199  
RED PIE FAYETTE 1160  
RED LAZY MC CC DETOUR 2W  
BLAIRS BLACKBIRD 107X

DAM

RED TER-RON FULLY LOADED 540R  
RED BBP CRACKER 5Z  
RED BAR 5 FAVORITE 2204W

RED HEARTLAND KNIGHT CHARM 11L  
RED TER-RON GOLDIE 240L  
RED BAR 5 AR WAREHOUSE 244R  
RED BRYLOR SDL PASSION 225P

BW	WW	CE	BW	WW	YW	MILK
84	-	-	-	-	-	-

31

## RED TJEPKEMA *Pretty 01G*

FEMALE TFF 01G APR 2 2019 2098788

SIRE

RED RMJ REDMAN 1T  
RED LAZY MC CC DETOUR 2W  
RED LAZY MC BESS 12S

RED 5L NORSEMAN KING 2291  
CROWFOOT KURUBA 4033P  
RED LAZY MC SMASH 41N  
RED LAZY MC BESS 73N

DAM

RED LAZY MC HONKY TONK 11X  
RED 7 TOWERS BARBARA 101B  
RED TVFS 32J ROSE 129R

RED LAZY MC COWBOY CUT 26U  
RED YY PATTY 701T  
RED BRYLOR PHOENIX 16K  
RED WCF HOOD 27E FORTUNE 32J

BW	WW	CE	BW	WW	YW	MILK
81	-	-	-	-	-	-

**Service: Exposed from April 10 to July 30 to Red Patchell Shadow 23H. Due Feb 18.**

Pretty is well-made proven cow. She comes from an excellent line of proven genetics with her Sire RED LAZY MC CC DETOUR 2W and her Dam RED 7 TOWERS BARBARA 101B. She has raised excellent calves for us and is a wonderful mother. She is halter broke and easy to lead. Our daughter enjoyed showing her and she will make a great addition to any herd. Bred to our Herd Bull RED PATCHELL SHADOW 23H who's Sire is RED RINGSTEAD KARGO 215U. Shadow is a large framed bull with lots of size and big robust hip. His calves have low birth weight for easy calving and lots of Vigor, Shadow passes on easy fleshing and big weaning weights to his calves.



31



SIRE

# SELLING CHOICE

## Lupin Lane Red Angus

Bred AI on April 22 for a Jan 29 calving to the Red 9 Mile Franchise 6305 bull, and checked safe via ultrasound on June 8th. No exposure.

### FOOTNOTE FOR LOT 32 & 33

Don't miss out on an unique opportunity to purchase a pair of similarly bred and serviced sweethearts! Both daughters of the highly acclaimed Dawson 7003E bull who is off the market with only a dozen registered cattle. Catt 203K is out of a Major League daughter and posts EPD's which place her in the top percentile of 25% CE, 30% BW, 20% WW, 10% YW, and 6% Milk, with a Birth Weight of 71 lb. Catt 205K has a Fritz Justice dam and posts top EPD percentiles of 40% CE, 30% BW, 25% WW, 15% YW, and 6% Milk and a 68 Lb Birth Weight. Can't decide which is better...take both...you will be glad you did!



### 32 RED CATTLELAC Valiant 203K FEMALE CATT 203K JAN 18 2022 2282281

SIRE	RED LEACHMAN PLEDGE A282Z	RED LSF NEXTPECTATION 0083X
	RED HXC DAWSON 7003E	RED LCOC ZRA TG004
	RED HXC C02	RED BECKTON NEBULA P P707 RED 762T HXC
DAM	RED FRITZ JUSTICE 8013	RED VGW JUSTICE 614
	RED CATTLELAC VALIANT 911G	RED FRITZ CHRIS 6047
	RED CATTLELAC VALIANT 211Z	RED LJC MISSION STATEMENT P27 RED CATTLELAC VALIANT 525R

BW	WW	CE	BW	WW	YW	MILK
71	527	6.0	0.1	49	87	30

### 33 RED CATTLELAC Valiant 205K FEMALE RWRA 5K JAN 3 2022 2326752

SIRE	RED LEACHMAN PLEDGE A282Z	RED LSF NEXTPECTATION 0083X
	RED HXC DAWSON 7003E	RED LCOC ZRA TG004
	RED HXC C02	RED BECKTON NEBULA P P707 RED 762T HXC
DAM	RED LCC MAJOR LEAGUE A502M	RED BFCK CHEROKEE CNYN 4912
	RED CATTLELAC VALIANT 12H	RED KRN REBA'S ROBIN
	RED CATTLELAC VALIANT 709E	RED BROWN PURSUIT A7670 RED CATTLELAC VALIANT 211Z

BW	WW	CE	BW	WW	YW	MILK
68	546	4.0	0.2	46	83	30



33

Bred AI on April 22 for a Jan 29 calving to the Red 9 Mile Franchise 6305 bull, and checked safe via ultrasound on June 8th. No exposure.



SIRE - LOTS 32 & 33



SERVICE SIRE

# Lupin Lane Red Angus



Bred AI on April 22 for a Jan 29 calving date to the 9 Mile Franchise 6305 Bull, and checked safe via ultrasound on June 8th. No Exposure.

When we asked Lupin Lane Angus to be part of the sale, they said they would send their best! And here is a daughter of the cornerstone of their program! 212K's dam is by Mission Statement and is Premier cow in the Angus Association. Premier cows are famous for cattle with longevity. 212K started with a 71 lb birth weight and posts top EPD percentiles of 35% CE, 25% CW, 30% WW, 20% YW, and 20% Milk. A herd builder type heifer!

## 34 RED CATTLELAC *Valiant* 212K

FEMALE CATT 212K MAR 12 2022 2282308

SIRE	RED PIE CINCH 4126	RED LSF SAGA 1040Y
	RED CATTLELAC VALIANT 812F	RED TXP BONNE BEL 110
	RED CATTLELAC VALIANT 211Z	RED LJC MISSION STATEMENT P27
DAM	RED LJC MISSION STATEMENT P27	RED CATTLELAC VALIANT 525R
	RED CATTLELAC VALIANT 211Z	RED LJC LANCER 806
	RED CATTLELAC VALIANT 525R	RED LJC HANNAH 106
		RED CHAMPLAIN MARIAS 33K
		RED CATTLELAC MISS GRAHAM L

BW	WW	CE	BW	WW	YW	MILK
71	554	6.0	0.0	46	81	27

## 35 RED KNOCK OUT *Crackle* 304L

FEMALE TKO 304L MAR 1 2023 2329394

SIRE	RED PASTORIZA 565 BRIGADIER	RED DOBLEHACHE 33 ORIENTAL
	RED TOWAW ORAZI CALIDAD 130Y	RED PASTORIZA 312 NARANJA
	RED PIRAY 479 RED DION GALGA	RED PIRAY 207 RED QUEBRACHODION
DAM	RED CORNER CREEK CASH 2R	RED PIRAY 237 REDGCANYON ELLETT
	RED GINN CASH CRACKLE 10B	RED PIE ATLANTIC 2204
	RED GINN ADVANCE CRACKLE	RED NORTHLINE PRINCESS 59L
		RED TER-RON ADVANCE 548R
		RED WCF CUB LASSIE 52P

BW	WW	CE	BW	WW	YW	MILK
78	-	-	-	-	-	-

## Knockout Cattle Co.

We are very excited to be entering into the first edition of the Ontario Finest Red Angus sale. When we were asked to join, we offered our best heifer calf to the sale marketing team at OBI. This Calidad daughter has Greatness written all over her. Length of spine, great growth and easy gains with some frame. Also not to mention the great cow she comes from. Her dam is the right sized cow with a beautiful udder. This heifer calf has all the makings to be an excellent female added to your herd! Take a look sale day and decide for yourself.



# Semen Lots

36

## RED BRYLOR *New Trend* 22D

**SIRE** RED CATTLELAC VALIANT 812F

**DAM** RED CATTLELAC VALIANT 211Z

**MGS** RED SEAMAN CHIEF 47Y

SELLING 1 PACKAGE OF 5 STRAWS  
FOB: BOGLE PASS ANGUS



37

## RED FINE LINE *Mulberry* 26P

**SIRE** RED COMPASS MULBERRY 449M

**DAM** RED DUS FAYETTE 8G

**MGS** RED SILVERAIS REDFORD

SELLING 1 PACKAGE OF 5 STRAWS  
FOB: BOGLE PASS ANGUS



38

## RED BIEBER *Impact* 4399

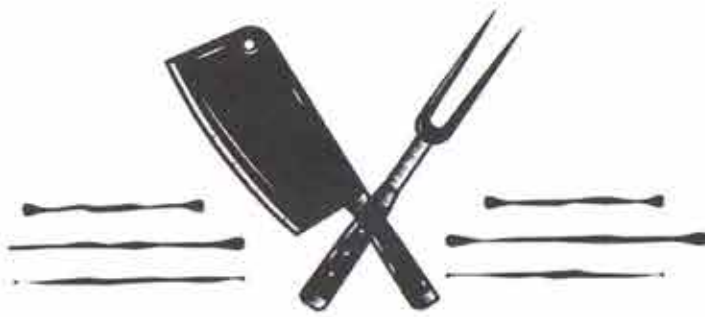
**SIRE** RED T3 CHIEF 2887

**DAM** BIEBER SIERRA 3560

**MGS** RED BIEBER LUCAS 2846

SELLING 1 PACKAGE OF 2 STRAWS  
FOB: ALTA GENETICS

We would like to thank the companies that placed their ads in the catalog, your support is greatly appreciated.



# BATTE MEATS

LIMITED

**WE WILL  
MEAT YOUR  
NEEDS!**

RETAIL SHOP  
&  
CUSTOM BUTCHERY

1282 B Line RR#1, Mildmay

[battemeats@gmail.com](mailto:battemeats@gmail.com)

(519) 367-2188

MARTIN'S  
**Feeders & Equipment**  
*We've Got The Feeder You Need*

Visit Our Website For a Full List of Our Products  
 1-888-938-2265 P: 519-698-2265 F: 519-698-2571  
[www.martinshayfeeders.ca](http://www.martinshayfeeders.ca) [ivan@martinshayfeeders.ca](mailto:ivan@martinshayfeeders.ca)

  
**CALF PENS**

  
**WBF BUNK FEEDER**

  
**QR-95 CATTLE HEAD LOCKS**

  
**BF-97-A FEEDER**

  
**HV8 6'x7' BALE MISER**

  
**308-WP BEEF-RITE FEEDER WITH PENNING**

  
**FEED TROUGHS for silage, grain, hay or minerals**

  
**SBFS SLANT BAR FEED FRONT**

  
**BNF TOMBSTONE FEEDER**

  
**7'x8' BALE MISER FEEDER**

  
**The BEEF-RITE BIN FEEDER**

  
**BF-02-C HAY FEEDER**

  
**HD-S-8 BALE FEEDER**

  
**TR-8 TOMBSTONE FEEDER**

  
**7'x13' BALE MISER FEEDER**



**Ontario's Finest  
Red Angus Sale**

**SPECIAL PRICING!**

❖  
Discounted Rate of \$168.00 per Night  
for a Standard Queen or King Suite!

❖  
4 minute Drive from Maple Hill Auctions!

❖  
Hot Buffet Breakfast & Parking Included!

❖





226-436-3030  
sales@bwpwalkerton.com  
10 East Ridge Rd., Walkerton




**OBI LIVESTOCK LTD.**  
PUREBRED CATTLE SALES MANAGEMENT TEAM

28 Glendale Blvd, Red Deer, AB • T4P 2P3  
Mark Holowaychuk - 403-896-4990  
Roger Peters - 403-828-9815



403-896-4990 • o.b.i@shaw.ca • www.cattlemanagement.ca



**GLEN G. REAY**  
Sales Representative

**WILFRED MCINTEE & CO. LTD BROKERAGE**  
105 Garafraxa Street North Box 5  
DURHAM, ONTARIO N0G1R0  
Cell: 519-369-4113  
Office: 519-369-2128  
Fax: 519-369-2274  
www.glenreay.com  
www.mcintee.ca  
Email: glen.reay@mcintee.ca





**877-442-3106**

**INTERNATIONAL TRANSPORTATION ESTABLISHED IN 1933**  
BRUCE & BUTCH POLAND  
829 REST ACRES ROAD, PARIS ONTARIO, N3L 3E3  
519-442-3106 OR 519-442-6242 FAX 519-442-1122  
TOLL FREE 877-442-3106 hsknill@ppoe.ca www.hsknilltransport.com

- SPECIALIZING IN PUREBRED LIVESTOCK TRANSPORTATION
- GODBENECK SERVICE AVAILABLE TO YOUR FARM IN ONTARIO
- PICK UP & DELIVERY POINTS ACROSS CANADA AND USA
- U.S. AND CANADA CUSTOMS BONDED CARRIER

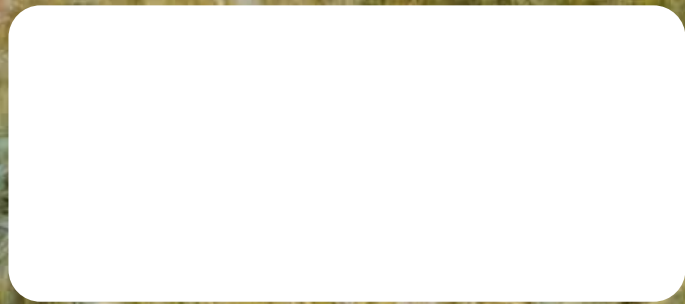
Also like to thank Jones Feed Mill for sponsoring the lunch and the Durham 4-H Beef Club for cooking and serving the lunch.



OBI LIVESTOCK LTD.  
28 GLENDALE BLVD  
RED DEER, AB  
T4P 2P3



RETURN POSTAGE GUARANTEED  
PORT DE RETOUR GARANTI



CATALOGUE  
CREATED BY:



DESIGNS