



**OBI Livestock Ltd. Presents
3rd ANNUAL**

**FROZEN
GENETICS
on**

ICE

ONLINE SALE

**Sale Starts on Thursday December 28 at 9:00 AM-
Sale Ends on Friday December 29 at 7:00 PM
Horseshoe Style**

OBI LIVESTOCK LTD. WELCOME



I welcome you all to the 3rd Annual OBI Livestock Ltd. Frozen Genetics On Ice Sale.

I have been striving for genetics that will enhance both the Black and Red Angus breeds by gathering semen from a lot of walking bulls that will evolve your herds. As well as very sought after A.I. bulls that make those front-end pasture cows. The offering contains very unique genetics that will take your program to that next level. Check out the very rare semen in this book as well, some you won't believe are around yet.

Embryos on offer as well are from the top end programs from across the land; outcross and popular pedigrees with huge marketability. Not very often do you get the chance to obtain such genetics. Some old and proven ones are also on offer as well. These also need some serious consideration. So many options available.

I am very proud of this offering and want to thank all the consignors for the consideration to allow myself and my team to market their program in this special event. Give me a call or any of the members of the sale team or even better call the consignors, they all want to visit after the holidays.



Happy Holidays to all,
Mark Holowaychuk
OBI Livestock Ltd.



SALE DAY INFORMATION

Sale Day Phones

Mark Holowaychuk, OBI (403)896-4990
Roger Peters, OBI (403)828-9815
Kurt Pedersen, OBI (780)209-9999
Jesse Emery, OBI (780)284-3490
Ryan Hurlburt, Consultant (306)292-9812
Mark Shologan, DLMS (780)699-5082

OBI Livestock Ltd.
28 Glendale BVLD
Red Deer, Ab. T4P 2P3
Email: o.b.i@shaw.ca

Website: www.cattlemangement.ca

EMBRYO GUARANTEES

Guaranteeing 90 day pregnancies if done by an accredited veterinarian.
3 EMBRYOS – GUARANTEEING 1 PREGNANCY
4 OR 5 EMBRYOS – GUARANTEEING 2 PREGNANCIES
All semen & Embryos are Canadian Qualified unless stated in the Lot.

SHIPPING

All transfer of embryos/semen and paperwork is between the buyer and seller.
Shipping costs are the responsibility of the purchaser.

TERMS & CONDITIONS

Sale will be conducted under the Canadian Angus Association Terms & Conditions.

U.S. EXCHANGE RATE

Will be announced prior to the sale.

ONLINE BIDDING

Sale Starts on Thursday December 28 at 9:00 AM
Sale Ends on Friday December 29 at 7:00 PM
DLMS FARM GATE TIMED AUCTION
The OBI Livestock Ltd. Frozen Genetic On Ice Sale will be conducted with DLMS and their Farmgate with a timed Racehorse Style Time Sale. For any assistance contact Mark Shologan or refer to Back Inside Cover.



2023 OBI Livestock Ltd. Frozen Genetics On Ice Sale Consignors



DURALTA FARMS INC. – DAVE DURIE (780)208-4888 LOT 1
MURRAY RANCHES – GORDON & SUNTANA MURRAY (403)501-8889 LOT 1
HAMILTON FARMS – ROB & GAIL HAMILTON & FAMILY (403)540-3186 LOTS 2,3,5
SIX MILE ANGUS – CLAYTON & CORRINE GIBSON, TYSON & CALLIE HERTZ (306)640-7970 LOT 3
ROY MAC ANGUS – KIRK MACDONALD (306)398-7469 LOT 4
COWTRAX CATTLE CO. – COLT KORNFIELD (306)298-7745 LOT 6,28
CRESTLAND FARMS LTD. – JOHN HARMS (780)926-9540 LOT 7
LYNDEN MANOR FARM – GLEN SMITH (416)526-5428 LOT 8,38,39
LLB ANGUS FARM LTD. – LEE BROWN (403)740-9429 LOT 8
PIESCHEL FARMS – DEVON & RAE-LEE ERICKSON (403)586-4047 LOT 9,30
3H ANGUS – DAVID HEPBURN (306)735-7356 LOT 10,11,12,13,14,15,16,17,18
CASTLELAND RANCH CORP. – EHREN HERMANSON (306)533-2839 LOT 19
HR HAHN CATTLE CO. – BOB HAHN & RYAN WEISS (780)991-9526 LOT 20,21,22,43,63,64,65
BRANDL CATTLE CO. – BRYON BRANDL (780)349-1765 LOT 23,24,25,26,53,54,55,56,57,58,59,60
PEDERSEN LIVESTOCK – KURT PEDERSEN (780)209-9999 LOT 26,49
CRESCENT CREEK ANGUS – WES & KIM OLYNYK WADE OLYNYK (306)728-8284 LOT 29,42
AVELYN ANGUS – DAVE HOFSTRA (780)699-7477 LOT 31
CUDLOBE ANGUS – DYCE BOLDUC (403)625-0981 LOT 32,41
POPLAR MEADOWS ANGUS – MONTY & TANYA BELSHAM (250)845-8474 LOT 33
WILBAR CATTLE CO. – BRYAN & TRACEY WILLMS (306)492-7504 LOT 34,45,47,48
PINE ISLAND ANGUS – LEAH ALLEN (780)205-5591 LOT 35
JON SHAW (780)785-8193 LOT 36
CASH CATTLE CO. – NOLAN CASH (403)548-9651 LOT 37
DWAJO ANGUS – DWAYNE EMERY (780)305-4209 LOT 40
TOWAW CATTLE CO. – KIRK WILDMAN (780)305-1661 LOT 44,62
ROHRICH CUTTING EDGE RANCH – RICK ROHRICH (701)391-1911 LOT 45
TRIPLE L LIVESTOCK – RANDY TEZTLAFF (306)231-6969 LOT 46,66
POHL LAND & CATTLE – CURTIS & KIM POHL (403)785-6801 LOT 49
TRADEMARK GENETICS – MANDY FISCHER (713)204-7525 LOT 50
MOOSE CREEK RED ANGUS – DARREN IPPOLITTO (306)577-8970 LOT 51
GOMACK RED ANGUS – BRAYDON GOUGH (780)274-0099 LOT 52
ENCLAVE ANGUS – SILVAN STAMM (780)679-8827 LOT 61
RIVERSIDE ANGUS – TERRY & TANYA STIGINGS (403)304-6772 LOT 67





S
E
M
E
N

Lot 1 MERIT INVESTMENT 1054J

TJL 1054J ♦ 2233546

HF SYNDICATE 213Z

BAR S RANGE BOSS 4002

S U-2 COALITION 206C

D MERIT FLORA 6078D

U2 ERELITE 109Z

MERIT FLORA 4120

	BW	WW	YW	MILK	CE
EPDS	2.8	63	103	25	5.0

LOT 1A TO 1D - SELLING 4 PACKS OF 5 STRAWS ♦

FOB: ALTA GENETICS USA, CDN QUALIFIED ♦

Merit Investment 1054J was the High Selling Bull at the Merit Bull Sale for \$85,000 in a hotly contested battle. His dam has done so much for the industry already with many top sellers for many folks. Merit Intent 37H to Linden Cattle Co., Merit Renegade 8130F to Everblack Angus, Merit Sam Elliott 9144G (Kept this bull in the Merit Program), Merit Depth Charge 1001J to 66 Ranch Ltd., Merit Incredible 1020J to 66 Ranch Ltd. & Murray Ranches Ltd. Many females have also made sales or kept in the operations. Her sire, U2 Coalition 206C has done amazing everywhere he has been used. He has had many top end bulls sell as well in the past few years. Investment 1054J is a bull that is a must see in person with all people having the highest remarks when leaving.



DAM



Bar-E-L Braggin Rights 129J
LLB Angus for \$31,000



Cowtrax War Camp 64H
Lamb's Angus for \$14,000



HF Aftershock 22J
Rivercrest Angus for \$50,000



Bar-E-L Redemption 22H
Valleymere TTT for \$21,500



HF Bermuda 179K
Rio Grande Angus for \$20,000

Lot 2 HF ALCATRAZ 60F

HAMI 60F ♦ 2043806

AVF BREAKOUT 5409

HF TIGER 5T

S MAY-WAY BREAKOUT 1310

D HF MAYFLOWER 191Z

MAY-WAY LADY BANDO 086

HF MAYFLOWER 78P

	BW	WW	YW	MILK	CE
EPDS	0.6	51	98	47	9.0



HF Erica 133K
JD Pastures for \$23,000

LOT 2A TO 2F -

SELLING 6 PACKS OF 5 STRAWS ♦

FOB: ALTA GENETICS ♦

Alcatraz progeny have been in high regard for their tremendous phenotype stamp, their docility, and flawless structure. Alcatraz sold through Hamilton Farms 2019 sale to Bar E-L Angus and Cowtrax Cattle Co. for a Canadian record selling price of \$200,000 for one half interest. Alcatraz set a new standard for the definition of what a fault free bovine should look like. His structure is pretty much flawless, and he is so impressive in every other way. If docility is important to you, he has that. If added muscle expression is your desire, he provides that. He has proven himself as a calving ease sire, and if excellent quality semen is a priority, he'll supply that. Included in Alcatraz's repertoire is the High Selling bull in Hamilton Farms 2022 Sale going to Rivercrest Angus for \$50,000, HF Aftershock 22J. Aftershock was the heaviest yearling bull with an Actual Weight of 1456 lbs on Jan 10. Pair this performance with the many other great qualities that Alcatraz carries through with foot and leg structure, docility, and calving ease and that is a recipe for success!!

S
E
M
E
N

HAMILTON FARMS & SIX MILE ANGUS



HF ROSEBUD 30K
\$30,000 TO
Ranche Ducharme



HF MERCENARY 199K
\$50,000 TO
Silver Knight Angus



HF SOLD OUT 179J
\$40,000 to Compass Ranch &
Remitall Farms



HF SHOWCASE 176J
\$40,000 to Ranch Covey Hill
& Mac Angus

Lot 3 SCHIEFELBEIN SHOWMAN 338

IMP 338F ♦ 2133416

JMB TRACTION 292

S A V RENOWN 3439

S SCHIEFELBEIN ATTRACTIVE 4565

D FROSTY ELBA 3745

FROSTY ANSWER 3979

FROSTY UPWARD 1100

	BW	WW	YW	MILK	CE
EPDS	0.3	80	152	31	9.0

LOTS 3A TO 3E - SELLING 5 PACKS OF 10 STRAWS ♦ FOB: ALTA GENETICS ♦

The buzz that was initially created around Showman and his progeny has just continued to impress people in the industry. The first semen kicked off in 2020 commanding the unprecedented price of \$1800/straw, as well as embryos bringing over \$3000. As we stated previously, Showman is the Real Deal, no smoke and mirrors, and his progeny seem to be following in his footsteps. He is the true definition of a Curve Bender! BW +0.3, WW +80, +YW +152. Showman has proven himself in the Sale Ring as well, with Greenwood High Class 87H – selling to Nordal Angus & Limousin for \$54,000.00 in 2021. Then in 2022 the lead off bull in the Hamilton Farms Sale went to RoyMac Angus & Daron Priest for \$34,000.00. Also, in 2022 other Showman bulls sold to Ranch Covey Hill for \$40,000.00 and \$34,000.00 and yet another bull to Compass Ranch & Remitall Farms for \$40,000.00. The sales do not stop there! In 2023, five full siblings sired by Showman sold in Hamilton Farms Sale averaging \$30,000.00, with a high of \$50,000.00 going to Silver Knight Angus, as well as the high selling heifer calf for \$30,000.00 going to Ranche Ducharme in Quebec. As well as in the sale ring, a Showman daughter was at side of the Supreme Champion female for Greenwood Angus at Lloydminster and Farmfair 2023.

Frozen Genetics on Ice Online Sale 6

S
E
M
E
N



HF SHOW BIZ 226J

Lot 4 HF SHOW BIZ 226J

HAMI 226J ♦ 2208042

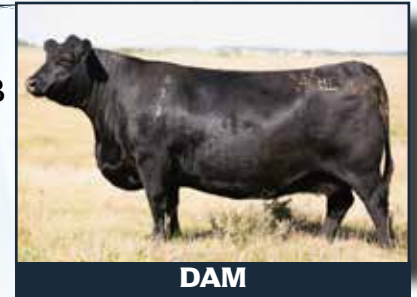
SCHIEFELBEIN ATTRACTIVE 4565 HF DEFENDER 146B

S SCHIEFELBEIN SHOWMAN 338 D HF TIBBIE 73D

FROSTY ELBA 3745

HF TIBBIE 263Y

	BW	WW	YW	MILK	CE
EPDS	1.5	82	146	32	6.0



DAM



ROY MAC SHOW BIZ 75L



ROY MAC SHOW BIZ 62L

**LOT 4A TO 4F - SELLING 6 PACKS OF 5 STRAWS ♦
 FOB: ALTA GENETICS, CDN & USA QUALIFIED**

Show Biz was a must own when we first saw him and we were lucky enough to acquire him with our partners Daron and Leanne Priest. He was slapped Reserve Grand Champion at Agribition 2022 and went on to breed 70 cows naturally this past summer. Show Biz is structurally correct and offers so much base width, natural thickness and stands square on all four corners. The first set of show biz calves have surpassed our expectations, the females are impressive with excellent teat placement and the bulls show the same masculinity and angus character as there sire. They will highlight our sale pen. Show Biz had a very successful show career but we are thrilled to have this genetics impacting our herd for the foreseeable future and we are offering up the chance for other operations to benefit.

S
E
M
E
N



DAM



HF INTERVENTION 65G
\$23,000 To Autumn Dew



GREENWOOD FOUR MILE 47J
Grandson



HF NEGOTIATOR 280C - SON
\$28,000 To Lewis Farms



HF TIBBIE 125H - DAUGHTER
\$15,500 To Grand River Angus

Lot 5 HF SYNDICATE 213Z

HAMI 213Z ♦ 1706210

CONNEALY CONSENSUS

TC FREEDOM 104

S CONNEALY CONSENSUS 7229 D HF MISS BLACKCAP 27R

BLUE LILLY OF CONANGA 16

HF MISS BLACKCAP 50N

	BW	WW	YW	MILK	CE
EPDS	-1.1	41	76	28	14.0

LOTS 5A TO 5F - 6 PACKS OF 5 STRAWS ♦

FOB: ALTA GENETICS ♦

Syndicate is a calving ease specialist and has really stood the test of time when you analyse the popularity of his progeny over the past years. He has been used extensively on heifers with much success and virtually zero stress on them or us!! Syndicate combines thickness, stature, and eye appeal, backed by positive EPD's. Syndicate daughters are a very treasured commodity, adding that all important maternal goodness we strive for, with beautiful udder structure and production to match. There are a number of very noteworthy cattle that are sons, daughters, or siblings to the tried and true Syndicate bull. The Coalition bull, a son of Syndicate sold to Spicklers for \$32,000, another full brother (Temptation) sold to Freyburns for \$47,500, and maternal sibs to Syndicate sold in the Masterpiece sale for \$37,500 (HF Swagger) and another maternal sib to Syndicate (HF Lifeline) sold to Grand River for \$35,000. The dam of Syndicate, Miss Blackcap 27R is a matriarch in the Hamilton Farms herd. She is the dam or grand dam of numerous herd bulls going into purebred herds across the country. Syndicate posts true calving ease. Syndicate is the grandsire of one of the most decorated and popular bulls to hit the shows this fall, Greenwood Four Mile 47J – Supreme Champion Bull at Lloydminster and Grand Champion Bull at CWA 2023. The consistency and quality of this pedigree is overwhelming, an older and more proven pedigree available for the taking.



Lot 6 HF REVERENCE 23K

HAMI 23K ♦ 2263414

SITZ STELLAR 726D HF KODIAK 5R
S SITZ PROFOUND 680G D HF ECHO 92Z
 SITZ EPPONIA 223C HF ECHO 274X

	BW	WW	YW	MILK	CE
EPDS	0.8	65	131	25	6.0



HF ECHO 92Z
Dam



HF ECHO 314F
Maternal Sister



HAMI 23K
2023 BULL SALE PIC

**LOT 6A TO 6F - SELLING 6 PACKS OF 5 STRAWS ♦
 FOB: ALTA GENETICS ♦**

HF Reverence 23K was the \$80,000 high selling bull from the 2023 Hamilton Farms Bull Sale purchased by Bar-E-L Angus and Cowtrax Cattle Co. He is a calving ease bull with added growth, muscle shape, large scrotal and exceptional feet. He backs this up on paper with a BW EPD of 0.8 all the way to YW of 131. His dam is an 11 year old tanky female with a beautiful udder who raised once again one of the best heifer calves this year at Hamilton's. She is also the dam to our top donor female HF Echo 314F who has 7 of the best bull calves in the bullpen at Cowtrax. The milking Sitz Profound daughters have picturesque udders and another son was recently crowned Senior Champion bull calf at Agribition. We believe he will have a huge impact in the progression of our herd and any herd he is used in. From standing on a great foundation, to powerful herd bull presence, backed by high quality maternal lineage, all the bases have been covered, use Reverence with confidence!



S
E
M
E
N

Lot 7 **BLAIRSWEST IMPRESSIVE 69K**

MJNB 69K ♦ 2299524

MAF FIRST IMPRESSION 4420

BAR-E-L NATURAL LAW 52Y

S MJT IMPRESSIVE 813F

D BAR-E-L ERICA 74A

DMM BLACKCAP ESSENCE 7Y

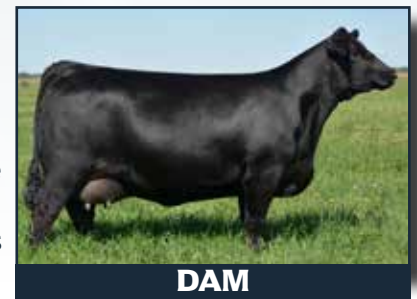
HF ERICA 339T

	BW	WW	YW	MILK	CE
EPDS	2.6	59	97	31	3.5

LOT 7A TO 7D - SELLING 4 PACKS OF 5 STRAWS ♦

FOB: ALTA GENETICS ♦

The High Selling bull from the 2023 Blairwest Bull Sale going to John Harms and Family at Crestland Farms Ltd. in Buffalo Head Prairie, Ab. He is out of the the immortal Bar-E-L Erica 74A donor cow that has done so much for the industry including the \$150,000 daughter for Rainbow Red Angus to ZWT Angus earlier this December and \$119,000 new herd bull for Elk Ridge Farms from the 2023 All Star Sale at Agribition. The sire MJT Impressive 813F is an outstanding herdsire as well. The maternal strength in this lot is one to consider to add some serious value to your herd.



DAM

LYNDEN MANOR FARMS & LLB ANGUS FARMS LTD.



**LOT 8A TO 8D - SELLING
4 PACKS OF 5 STRAWS ♦**

FOB: ALTA GENETICS ♦

The progeny seen at LLB Angus and Lyndon Manor this calf crop will entice you to own some 19 Million. Flat outstanding progeny seen at these locations. A bull that will add size and power to your herd.

Lot 8 WHITESTONE 19-MILLION

8

IMP 0100G ♦ 2250656

BASIN PAYWEIGHT 1682

G A R EXALTATION 3144

S DEER VALLEY GROWTH FUND

D B&B ERICA 605

DEER VALLEY RITA 36113

B&B ERICA 4064

	BW	WW	YW	MILK	CE
EPDS	2.9	95	173	28	5.0

PIESCHEL FARMS & TJL ENTERPRISES



**LOT 9A TO 9C - SELLING
3 PACKS OF 10 STRAWS
FOB: ALTA GENETICS ♦**

Hendrix 8H has gotten a lot of attention and given himself a great reputation and has the banners to prove it. He was the 2021 Lloydminster Stockade Roundup Reserve Grand Champion Angus bull, 2022 IPE and Olds Fall Classic Reserve Grand Champion Angus bull. His first crop of calves are built right and have the same docile temperament of their sire. The bull calves have big testicular development and big bodies. The heifer calves are stylish and feminine. Proven to work on both heifer and cows to give performance calves with style.

Lot 9 PF TJL HENDRIX RLP 8H

9

RLP 8H ♦ 2139610

LD CAPITALIST 316

ARDA CASH FLOW 63D

S MUSGRAVE 316 STUNNER

D ARDA BLACKLASS 4F

MCATL BLACKBIRD 831-1378

ARDA BLACKLASS 27A

	BW	WW	YW	MILK	CE
EPDS	3.2	77	137	30	-3.0

3H ANGUS



Lots 10 & 11 SAV 004 **DENSITY** 4336
IMP 4336P ♦ 1266311

SITZ TRAVELER 8180
S SAV 8180 TRAVELER 004
 BOYD FOREVER LADY 8003
 LEACHMAN RIGHT TIME
D SAV MAY 7238
 S A R PROSPECTOR MAY 9124

	BW	WW	YW	MILK	CE
EPDS	3.8	50	88	20	7.0

LOT 10A-10B - SELLING 2 PACKS OF 5 STRAWS OF FEMALE SEXED SEMEN ♦
LOT 11A-11D - SELLING 4 PACKS OF 5 STRAWS ♦
LOTS 10 & 11 FOB: BALGONIE ANIMAL BREEDERS

3H ANGUS



Lot 12 SAV **FINAL ANSWER** 0035
IMP 035K ♦ 1061938

G D A R TRAVELER 71
S SITZ TRAVELER 8180
 SITZ EVERELDA ENTENSE 1137
 BON VIEW BANDO 598
D SAV EMULOUS 8145
 S A V SKY EMULOUS 2124

	BW	WW	YW	MILK	CE
EPDS	-1.2	56	95	23	13.0

LOT 12A-12B - SELLING 2 PACKS OF 5 STRAWS ♦
FOB: BALGONIE ANIMAL BREEDERS ♦

3H ANGUS



Lot 13 SAV **BISMARCK** 5682
IMP 5682R ♦ 1369591

G D A R TRAVELER 044
S G A R GRID MAKER
 G A R PRECISION 2536
 SCHOENES FIX IT 826
D SAV ABIGALE 0451
 S A V ABIGALE 6062

	BW	WW	YW	MILK	CE
EPDS	0.1	53	89	21	12.0

LOT 13 - SELLING 1 PACK OF 7 STRAWS ♦
FOB: BALGONIE ANIMAL BREEDERS ♦

**S
E
M
E
N**

3H ANGUS



Lot 14

HF KODIAK 5R

HAMI 5R ♦ 1274305

TC ADVANTAGE

S SANDY BAR ADVANTAGE 43M

SANDY BAR JEMINA 44K

VERMILION YELLOWSTONE

D WILBAR RUBY 955N

WILBAR RUBY 161J

	BW	WW	YW	MILK	CE
EPDS	0.2	49	84	18	10.0

**LOT 14 - SELLING 1 PACK OF 5 STRAWS ♦
FOB: BALGONIE ANIMAL BREEDERS ♦**

3H ANGUS



Lot 15

OCC LEGACY 839L

IMP 839L ♦ 1193688

D H D TRAVELER 6807

S O C C ECHELON 857E

DIXIE ERICA OF C H 1019

O C C ANCHOR 771A

D O C C DIXIE ERICA 960E

DIXIE ERICA OF R R 4345

	BW	WW	YW	MILK	CE
EPDS	1.2	31	60	23	9.0

**LOT 15 - SELLING 1 PACK OF 5 STRAWS ♦
FOB: BALGONIE ANIMAL BREEDERS ♦**

3H ANGUS



Lot 16

ALBERDA TRAVELER 416

IMP 6446D ♦ 876382

G D A R TRAVELER 044

S D H D TRAVELER 6807

G A R PRECISION 2536

SCHOENES FIX IT 826

D ALBERDA QUEEN KIMBERLY 222

S A V ABIGALE 6062

	BW	WW	YW	MILK	CE
EPDS	3.6	33	67	26	2.0

**LOT 16A- 16B -
SELLING 2 PACKS OF 5 STRAWS ♦
FOB: BALGONIE ANIMAL BREEDERS ♦**

**S
E
M
E
N**

3H ANGUS



Lot 17 SITZ **UPWARD** 307R
IMP 307R ♦ 1385926

CONNEALY LEAD ON
S CONNEALY ONWARD
 ALTUNE OF CONANGA 6104
 SITZ VALUE 7097
D SITZ HENRIETTA PRIDE 81M
 SITZ HENRIETTA PRIDE 1370

	BW	WW	YW	MILK	CE
EPDS	2.3	65	124	34	7.0

LOT 17A - 17D -
SELLING 4 PACKS OF 5 STRAWS ♦
FOB: BALGONIE ANIMAL BREEDERS ♦

3H ANGUS



Lot 18 GUMBO GULCH **CREED** 94S
JNI 94S ♦ 1328102

CONNEALY FOREFRONT
S TC FREEDOM 104
 T C RUBY 9095
 BAR J P LEGEND 70K
D CASSIE OF GUMBO GULCH 58M
 CASSIE OF GUMBO GULCH 43F

	BW	WW	YW	MILK	CE
EPDS	7.0	51	82	27	-2.0

LOT 18A - 18B -
SELLING 2 PACKS OF 5 STRAWS ♦
FOB: ALTA GENETICS ♦

CASTLELAND RANCH CORP.



Lot 19 SAV **RESOURCE** 1441
IMP 1441Y ♦ 1707295

R R RITO 707
S RITO 707 OF IDEAL 3407 7075
 IDEAL 3407 OF 1418 076
 SAV 8180 TRAVELER 004
D SAV BLACKCAP MAY 4136
 SAV MAY 2397

	BW	WW	YW	MILK	CE
EPDS	4.0	69	130	18	-1.0

LOT 19A - 19C -
SELLING 3 PACKS OF 10 STRAWS ♦
FOB: SOUTHWEST GENETICS ♦

S
E
M
E
N

HR HAHN CATTLE CO.



Lot 20 **BAR-E-L NATURAL LAW 52Y**
DBR 52Y ♦ 1629829

G A R GRID MAKER
S SAV BISMARCK 5682
 S A V ABIGALE 0451
 BAR-E-L MCC 365 ICON 20H
D BAR-E-L MAGNOLIA 143K
 DOUBLE FOUR DUCHESS 12G

	BW	WW	YW	MILK	CE
EPDS	3.2	56	106	21	3.0

LOT 20 - SELLING 1 PACK OF 3 STRAWS ♦
FOB: HR HAHN CATTLE CO. ♦

HR HAHN CATTLE CO.



Lot 21 **OCC LEGACY 839L**

IMP 839L ♦ 1193688
 D H D TRAVELER 6807
S OCC ECHELON 857E
 DIXIE ERICA OF C H 1019
 O C C ANCHOR 771A
D OCC DIXIE ERICA 960E
 DIXIE ERICA OF R R 4345

	BW	WW	YW	MILK	CE
EPDS	1.2	31	60	23	9.0

LOT 21 - SELLING 1 PACK OF 2 STRAWS ♦
FOB: HR HAHN CATTLE CO. ♦

HR HAHN CATTLE CO.



Lot 22 **OGL BATTLECRY 427 128**

IMP 5320D ♦ 871986
 NICHOLS LANDMARK L56
S NICHOLS EUREKA W57
 NICHOLS LUPU 9103
 GT MAXIMUM
D OGL DUSTY ROSE 128 902
 OGL DUSTY ROSE HV 902-V306

	BW	WW	YW	MILK	CE
EPDS	3.9	31	71	25	-2.0

LOT 22A - 22B -
SELLING 2 PACKS OF 5 STRAWS ♦
FOB: HR HAHN CATTLE CO. ♦

**S
E
M
E
N**

BRANDL CATTLE CO.

Lot 23 **ANGUS ACRES DANCER 7Z**
FTB 7Z ♦ 699254

PERRYVILLE LANCER 56P

S ANGUS ACRES LANCER 60U

SPRUCE VIEW JESTRESS 24M

ANGUS ACRES TEXAS TEA 19M

D ANGUS ACRES COUNTESS 70S

TRI J K COUNTESS 012N

	BW	WW	YW	MILK	CE
EPDS	4.0	16	28	26	-5.0

LOT 23 - SELLING 1 PACK OF 10 STRAWS ♦

FOB: ALTA GENETICS ♦ Best described as long bodied and strong topped Dancer 7Z is the best son of Lancer 60U and from the famed Countess 70S who sold to Walter Brown and raised several herd bulls including Canadian Rocky.

BRANDL CATTLE CO.

Lot 24 **PINE DRIVE BIG SKY**
IMP 80M ♦ 572983

EILEENMERE LAD 173

S LE MAR EILEENMERE LAD 549

BLACKBIRD BLOSSOM 925 G D A R

PREMIER STARDOM

D BENLOCK BLACKCAP 108K

BLACKCAP OF BENLOCK 8H

	BW	WW	YW	MILK	CE
EPDS	5.8	27	35	18	-8.0

LOT 24A - SELLING 1 PACK OF 5 STRAWS ♦

LOT 24B - SELLING 1 PACK OF 6 STRAWS ♦

FOB: ALTA GENETICS ♦ Still one of the most notable and highly used sires ever in the Angus industry. Pine Drive daughters are performance producing machines.

BRANDL CATTLE CO.

Lot 25 **ELLINGSON HOMESTEAD 6030**
IMP 6030D ♦ 2115996

CONNEALY THUNDER

S CTS REMEDY 1T01

CTS 7V03 BELLEMERE MAID 9T02

LT TERRITORY 5824 OF EA

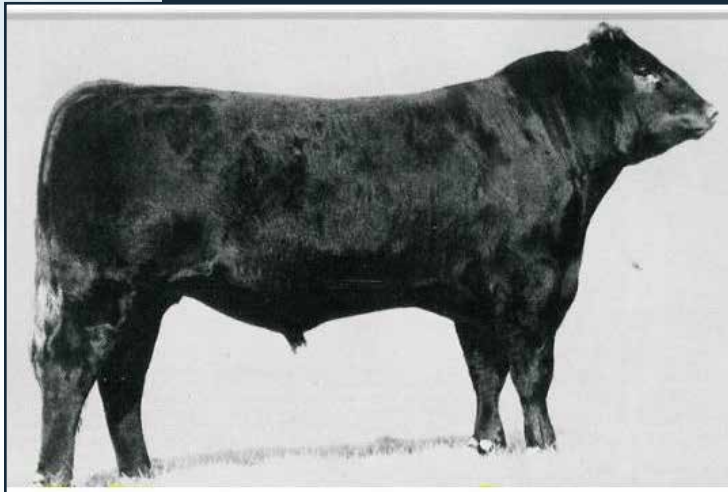
D EA ERICA 1082

S A V ALLIANCE 2606

	BW	WW	YW	MILK	CE
EPDS	1.7	75	144	29	3.0

LOT 25 - SELLING 1 PACK OF 4 STRAWS ♦

FOB: ALTA GENETICS ♦ SEXED MALE - Homestead is from a respected program known for maternal power. He produces muscle and performance in an attractive package. A balanced trait sire with 10 traits in the top 15%.



S
E
M
E
N

BRANDL CATTLE CO.



Lot 26 PEAK DOT TRUST 86G

PDAR 86G ♦ 2111614

CONNELLY EARNAN 076E

S ELLINGSON ROUGHRIDER 4202

EA BLACKCLASS 8914

HOOVER NO DOUBT

D PEAK DOT QUEEN 303D

QUEEN OF PEAK DOT 903W

	BW	WW	YW	MILK	CE
EPDS	2.0	62	121	27	2.0

**LOT 26A - 26B -
SELLING 2 PACKS OF 10 STRAWS ♦
FOB: ALTA GENETICS ♦**

The most powerful sire ever produced at Peak Dot. Big topped, square hipped with massive volume and muscle dimension combined with breed leading growth and carcass figures. A powerful pedigree stacked in outstanding phenotype being an Ellingson Rough Rider x Hoover No Doubt. His dam ranks as the very best No Doubt daughter in the Peak Dot herd.

PEDERSEN LIVESTOCK



Lot 27 MUSGRAVE SKY HIGH 1535

IMP 1535C ♦ 1952446

CONNELLY EARNAN 076E

S MUSGRAVE BIG SKY

SAV PRIMROSE 7861

SAV 004 DENSITY 4336

D FLAD QUEEN W 00649

PLATTEMERE QUEEN W660

	BW	WW	YW	MILK	CE
EPDS	2.0	57	102	24	9.0

**LOT 27 - SELLING 1 PACK OF 7 STRAWS ♦
FOB: PEDERSEN LIVESTOCK ♦**

COXTRAX CATTLE CO.



Lot 28 SAV FINAL ANSWER 0035

IMP 035K ♦ 1061938

G D A R TRAVELER 71

S SITZ TRAVELER 8180

SITZ EVERELDA ENTENSE 1137

BON VIEW BANDO 598

D SAV EMULOUS 8145

SAV SKY EMULOUS 2124

	BW	WW	YW	MILK	CE
EPDS	-1.2	56	95	23	13.0

**LOT 28A - 28B -
SELLING 2 PACKS OF 10 STRAWS ♦
FOB: COWTRAX CATTLE CO.**

**S
E
M
E
N**

CRESCENT CREEK ANGUS

Lot 29 SILVER DOME **DYNASTY 19T**
SDF 19T ♦ 1409039

ESTON ENCOUNTER M G 55'71

S WANDERING CRK DYNASTY JRM 2F
ROSE G V 37U

DURNESS WINTON 14H

D SILVER DOME OAKLEAF 119L
SILVER DOME OAKLEAF 19D

	BW	WW	YW	MILK	CE
EPDS	2.6	20	35	27	-4.0

LOT 29A - 29B -
SELLING 2 PACKS OF 5 STRAWS ♦
FOB: CRESCENT CREEK ANGUS ♦

PIESCHEL FARMS

Lot 30 COLBURN **PRIMO 5153**
IMP 5153C ♦ 1952445

EXG RS FIRST RATE S903 R3

S DAMERON FIRST CLASS
DAMERON NORTHERN MISS 3114

SILVEIRAS STYLE 9303

D SILVEIRAS SARAS DREAM 1339
EXG SARAS DREAM S609 R3

	BW	WW	YW	MILK	CE
EPDS	3.7	56	90	8	1.0

LOT 30 - SELLING 1 PACK OF 7 STRAWS ♦
FOB: ALTA GENETICS ♦

AVELYN ANGUS



Lot 31 WHITESTONE **WIDESPREAD MB**
IMP 5029E ♦ 947544

EMULATION N BAR 5522

S N BAR EMULATION EXT
N BAR PRIMROSE 2424

D H D TRAVELER 6807

D M B RACHEL 2173
R R P RACHEL 6072

	BW	WW	YW	MILK	CE
EPDS	4.0	52	89	17	-1.0

LOT 31 - SELLING 1 PACK OF 5 STRAWS ♦
FOB: AVELYN ANGUS ♦

CUDLOBE ANGUS

Lot 32 CUDLOBE **STEMWINDER 13N**
UGA 13N ♦ 544422

BAROS OF ALCAN ANGUS 40'73

S BOW RIDGE SIR BAROS 112J
HIGHLAND BOSTA BLACKBIRD 57F

ED RENE BLACK CANADIAN 19F

D ED RENE B ANGEL 2H
ED RENE BLACK ANGEL 4

	BW	WW	YW	MILK	CE
EPDS	1.6	16	23	23	-2.0

LOT 32A - 32B -
SELLING 2 PACKS OF 5 STRAWS ♦

FOB: CUDLOBE ANGUS ♦ Cudlobe Stemwinder 13N is an all Canadian bull who was three times Champion at the Lethbridge Rocky Mountain Livestock Show, and Reserve Champion Angus Bull at Farmfair. He sired the 1985 string of bulls for Cudlobe which averaged over a ton and brought \$6,000 a piece. The Stemwinder females were the mainstay of the Cudlobe herd in the mid 80's and early 90's. His full sister was the highest performance female at SydGen Angus in the 1980's for ten years and established the famous Black Angel line that is still recognized today. This is a unique opportunity to dive into the Champions of Cudlobe's past.





EMBRYOS

Lot 33

SOO LINE LADY 9339 X
SITZ BARRICADE 632F

DAM: SOO 339W ♦ 1505098

SITZ STELLAR 726D

BROCKHILL PROPHECY 4P

S SITZ BARRICADE 632F

D SOO LINE LADY 9339

SITZ BARBARAMERE NELL 765D

JL LADY 06 112

PE	BW	WW	YW	MILK	CE
EPDS	3.0	59	99	23	5.5

LOT 33 - SELLING 1 PACKAGE OF 3 IVF EMBRYOS ♦

FOB: BOW VALLEY GENETICS ♦

What an opportunity here folks, Soo Line Lady 9339, the great donor cow for Poplar Meadows. She has produced so many high sellers across the years. the consistency in this dam is amazing. You want to own her progeny. Combined with Sitz Barricade 632F a new and exciting herdsire that has the land talking. These could be the last Soo Line Lady 9339 she lets go as the she just passed this fall.



SIRE OF EMBRYOS - SITZ BARRICADE 632F



SIRE OF EMBRYOS
CONNEALY CRAFTSMAN

EMBRYOS

Lot 34

PM ROSEBUD 145'19
CONNEALY CRAFTSMAN X

SIRE: IMP 030H ♦ 2305446 **DAM:** FIRE 145G ♦ 2098807

SITZ RESILIENT 10208

BAR-E-L NATURAL LAW 52Y

S CONNEALY CRAFTSMAN

D PM ROSEBUD 145'19

BLACK CATHY OF CONANGA 8521

HF ROSEBUD 103Y

PE	BW	WW	YW	MILK	CE
EPDS	1.9	66	114	36	8.0

LOT 34 - SELLING 1 PACKAGE OF 3 EMBRYOS ♦

FOB: BOW VALLEY GENETICS ♦

PM Rosebud 145'19 is a gorgeous Natural Law daughter out of the famed 103Y Rosebud donor at Poplar Meadows Angus. She is a full sister to several highly productive cows in western Canada. The most renowned is PM Rosebud 77'15 at Lazy MC who was a top 10 Finalist in the Agribition Supreme and past donor. Connealy Craftsman is the \$500,000 record setting bull that sires big bodied, high performance cattle that not only pound down the scales in the bull pen but add broody shape and maternal strength into his daughters.

PINE ISLAND ANGUS



LEAH 21J - DAUGHTER

Lot 35

RRD TIBBIE 18Y

DAM: RRD 18Y ♦ 1638940
S A V HEAVY HITTER 6347

D RRD TIBBIE 18Y

RRD TIBBIE 81R

LOT 35A - SELLING 1 PACKAGE OF 3 EMBRYOS Sired BY
S A V RENOVATION 6822 x RRD TIBBIE 18Y ♦
FOB: SUNDOWN LIVESTOCK TRANSPLANTS ♦
CAN, USA, AUS, SOUTH AMERICA QUALIFIED ♦

PE	BW	WW	YW	MILK	CE
EPDS	2.5	67	122	16	3.0

LOT 35B - SELLING 1 PACKAGE OF 3 EMBRYOS Sired BY
S A V SUPERCHARGER 6813 x RRD TIBBIE 18Y ♦
FOB: SUNDOWN LIVESTOCK TRANSPLANTS ♦
CAN, USA, AUS, SOUTH AMERICA QUALIFIED ♦

PE	BW	WW	YW	MILK	CE
EPDS	2.3	56	102	19	3.0



SIRE OF LOT 35A EMBRYOS
S A V RENOVATION 6822



SIRE OF LOT 35B EMBRYOS
S A V SUPERCHARGER 6813



LEAH 10K - DAUGHTER

RRD Tibbie 18Y is a truly powerful individual who I acquired from my dad a few years ago. Every year he AI's his best cows to raise bulls for use in his own herd and she had been headlining that program since she was a two year old. I guess dad finally got tired of me badgering him every spring when we AI'ed about how she really should be a donor cow and he gave me the opportunity to own her! Phenotypically she is nearly perfect! She is great on the move and at nearly 13 years of age she still has a fabulous udder. We already have a couple daughters out of her flush to Renovation that we absolutely love! They will be in production early 2023. They are stylish, easy fleshing, great footed and are laying down what look to be very neat udders. Her mating to the now deceased SAV Supercharger has me really excited. He is a bull who I think will compliment her very well with his tremendous muscle expression and awesome phenotype. These will be the last embryos available from RRD Tibbie 18Y.

**E
M
B
R
Y
O
S**



SIRE OF EMBRYOS - DL RAINMAKER 1879

E
M
B
R
Y
O
S

Lot 36

BROOKING COUNTESS 7077
DL RAINMAKER 1879

SIRE: IMP 879G ♦ 2138835 DAM: JSTN 77E ♦ 1967700

HILLTOP RAINMAKER 6274

BAR-E-L NATURAL LAW 52Y

S DL RAINMAKER 1879

D BROOKING COUNTESS 7077

DL RUBY 496

BROOKING COUNTESS 239

PE	BW	WW	YW	MILK	CE
EPDS	4.3	77	129	21	-0.5

LOT 36 - SELLING 1 PACKAGE OF 3 EMBRYOS ♦

FOB: PEAK GENETICS ♦

From one of the best cows in the land, Brooking Countess 7077, these embryos are sure to take your program to the next level. She was the Supreme Champion Female at the RBC Supreme at Agribition in 2019. Not much more needs to be said about what she done so far in her career. Simply amazing. DL Rainmaker is an outcross bull that will bring the new owner a fresh look in the Angus Division.



SIRE OF EMBRYOS
COLEMAN BANKER 9215

**Lot
37**

COLEMAN DONNA 756
COLEMAN BANKER 9215



SIRE: IMP 9215G ♦ 2323911 **DAM:** - ♦ US18841167

COLEMAN BRAVO 6313

OCC JUNEAU 807J

S COLEMAN BANKER 9215

D COLEMAN DONNA 756

COLEMAN DONNA 4203

COLEMAN DONNA 714

PE	BW	WW	YW	MILK	CE
EPDS	-	-	-	-	-

LOT 37 - SELLING 1 PACKAGE OF 3 IVF EMBRYOS ♦

FOB: BOW VALLEY GENETICS ♦

Coleman Donna 756 is a cow we are super excited about. She is a direct daughter of Coleman Donna 714 and OCC Juneau 807J making her a full sister to the \$480,000 Coleman Rock 7200. Boasting a classic Angus head, extended body, flawless udder, and impeccable feet, Donna 756 represents everything we strive for in a donor female. This strategic mating with Coleman Banker adds in the likes of Coleman Bravo and Donna 4203 creating an even more impressive pedigree. Our Banker calves have impressed so far, born easy with explosive growth resulting in impressive weaning weights and flawless phenotype. Cash Cattle Co guarantees one pregnancy, if none catch buyer will be awarded 3 embryos of the same mating. No further warranties will be provided.

**E
M
B
R
Y
O
S**



BALDRIDGE ISABEL Y69 - DAM OF BALDRIDGE ISABEL 0188



SIRE OF LOT 38A EMBRYOS
BASIN JAMESON 1076



SIRE OF LOT 38B EMBRYOS
EXAR STOCK FUND 9097B



SIRE OF LOT 35C EMBRYOS
DB ICONIC G95

Lot 38 **BALDRIDGE ISABEL 0188**

DAM: IMP 188D ♦ 2289800

HAYNES OUTRIGHT 452

D BALDRIDGE ISABEL 0188

BALDRIDGE ISABEL Y69

**LOT 38A – SELLING 1 PACKAGE OF 3 EMBRYOS BY
BASIN JAMESON 1076 X IMP 188D
FOB: GENEX - USA, CDN QUALIFIED**

PE	BW	WW	YW	MILK	CE
EPDS	0.4	86	145	28	8.0

**LOT 38B – SELLING 1 PACKAGE OF 3 EMBRYOS BY
EXAR STOCK FUND 9097B X IMP 0188D
FOB: GENEX - USA, CDN QUALIFIED**

PE	BW	WW	YW	MILK	CE
EPDS	-0.5	76	141	26	10.0

**LOT 38C – SELLING 1 PACKAGE OF 3 EMBRYOS BY
DB ICONIC G95 X IMP 0188D
FOB: GENEX - USA, CDN QUALIFIED**

PE	BW	WW	YW	MILK	CE
EPDS	0.0	75	132	26	8.0

What an amazing opportunity to get some fresh and exciting embryos from Lynden Manor. Glen Smith sources out the best cows from across the line to bring you these breed leading genetics. The dam Baldrige Isabel D188 is a dam that Glen owns, and she is out of the Immortal Baldrige Isabel Y69. What a pedigree and lineage here. Get ahead of all operations with these embryos.

Lot 38A – Basin Jameson 1076 was the \$600,000 bull to Express Ranches & EZ Angus.

Lot 38B – EXAR Stock Fund 9097B is the High Marbling son of Deer Valley Growth Fund.

Lot 38C – DB Iconic G95 is the huge carcass bull out of Musgrave Stunner.



B&B ERICA 605 - DAM OF WHITESTONE ERICA 9110



SIRE OF EMBRYOS - DB ICONIC G95

**Lot
39**

**WHITESTONE ERICA 9110 X
DB ICONIC G95**

SIRE: IMP 95G ♦ 2237364 DAM: USA REG ♦ 19435389

MUSGRAVE 316 STUNNER

VINTAGE COMMANDER 4152

S DB ICONIC G95

D WHITESTONE ERICA 9110

DB MS DISCOVERY D13

B&B ERICA 605

PE	BW	WW	YW	MILK	CE
EPDS	0.9	69	125	25	7.0

LOT 39 – SELLING 1 PACKAGE OF 3 EMBRYOS ♦

FOB: GENEX - USA, CDN QUALIFIED ♦

Whitestone Erica 9110 was the \$22,500 lead off cow purchased from the 2022 Whitestone Sale in Virginia. Fresh, new genetics here again brought to you by Lynden Manor Farms. Great numbers across the board for these embryos as well. The Iconic calves are sure ones worth a few looks. They have style, shape, and move so well in the pens. Outcross genetics to enhance your program here.

**E
M
B
R
Y
O
S**

DWAJO ANGUS



SIRE OF EMBRYOS - HF SHOWTIME 78H

**Lot
40**

DWAJO JESTRESS 119Z
HF SHOWTIME 78H



SIRE: HAMI 78H ♦ 2151922 DAM: DJE 119Z ♦ 1944038

SCHIEFELBEIN SHOWMAN 338

DWAJO FINAL DOMINATION 33X

S HF SHOWTIME 78H

D DWAJO JESTRESS 119Z

HF ECHO 86D

DWAJO JESTRESS 122X

PE	BW	WW	YW	MILK	CE
EPDS	1.3	58	106	29	2.0

LOT 40 - SELLING 1 PACKAGE OF 3 EMBRYOS ♦

FOB: DWAJO ANGUS

DJE 119Z has been one of our top producing cows at Dwajo, having the Zara cow family in her pedigree we have had since 1983 when we started Dwajo, on the dam side is the Jestress cow family that we have had since 1992 so this is taking the guess work of this cows pedigree when they have lasted that long. 119Z has produced daughters to Schulz Angus, Everblack Angus aka Sully, producing high selling bull at On Target Bull sale to Double F Cattle Co and Gurney Land & Cattle. We have been using two bulls out of 119Z and they have not disappointed us having some of the top bulls in the bullpen this year does not matter what you breed her to they seem to work.

Showtime was purchased from Hamilton Farms Bull Sale in March 2020 for \$80,000. Great muscle expression, thick topped, lots of heel, great headed with loads of extension throughout. This is a bull that needs some serious consideration for your program. The bull is doing a great job at Allandale & Double F. We have a few bulls by this mating that look good in the bull pen.

Frozen Genetics on Ice Online Sale 26

**E
M
B
R
Y
O
S**

CUDLOBE ANGUS



SIRE OF EMBRYOS - V A R FIRE POWER

Lot 41 CUDLOBE MISS PRIDE 83Z X
VAR FIRE POWER

SIRE: IMP 9228G ♦ 2237390 DAM: UGA 83Z ♦ 1675511

V A R POWER PLAY 7018

WERNER WESTWARD 357

S V A R FIRE POWER 9228

D CUDLOBE MISS PRIDE 83Z

VINTAGE RITA 5063

CUDLOBE MISS PRIDE 38R

PE	BW	WW	YW	MILK	CE
EPDS	2.3	74	128	31	4.5

LOT 41 - SELLING 1 PACKAGE OF 3 EMBRYOS ♦

FOB: BOW VALLEY GENETICS ♦

An embryo package right from the heart of the Cudlobe herd. A Canadian Angus Association Elite dame Miss Pride is an outstanding female with a unique pedigree having raised 2 Purebred bulls, Cudlobe Renegade 2G owned by Southland Angus and Cudlobe Iconic 2L recently purchased by Easy Ray Angus. 4 daughters currently working in the herd and the favorite of their respective years. 83Z is no one trick pony and that is why she made it to the top of our donor program. VAR Fire Power is a bull we chose to use for his exceptional growth and carcass profile with the highest Canadian Balanced Index in Canada. The mating here as well will have over a +1.00 marbling Score.



UGA 83Z SON

E
M
B
R
Y
O
S

CRESCENT CREEK ANGUS



WOS 80F
Daughter of WOS 190T



WOS 68E
Grandaughter of WOS 190T

Lot 42 **CRESCENT CREEK EULA 190T** X
B/R MVP 5247

SIRE: IMP 5247C ♦ 2192612 **DAM:** WOS 190T ♦ 1386100

BASIN PAYWEIGHT 1682

CAR IDEAL 061

S B/R MVP 5247

D CRESCENT CREEK EULA 190T

B/R BLOSSOM 3254

CRESCENT CREEK EULA 94L

PE	BW	WW	YW	MILK	CE
EPDS	3.0	56	97	29	2.5

LOT 42 - SELLING 1 PACKAGE OF 3 EMBRYOS ♦

FOB: CRESCENT CREEK ANGUS ♦

We are excited to offer embryos off one of our most consistent and sound cows to walk at CCA. 190T has a impressive list of accomplishments and the pillar of Eula Cow family. 190T, 22X, and 68E have been top producers. 190T offers up a perfect foot, with a tight udder, and longevity. 190T was in over 10 pedigrees of progeny in our last sale alone. These will be the last embryos on offer of 190T as she is no longer around. An opportunity to own proven genetics that have worked in our herd aswell many other producers of the years. The Eula cow family has quietly become one of the most consistent and top producing families at CCA. We are excited with the sire of the embryos, BR MVP. A bull backed by the proven Payweight 1682, who offers structural soundness and longevity. Our first set of sons sold of MVP where very well accepted by customers. They offer big foot, testicle, muscle, and big hip. We feel the cross of longevity, structural soundness, and proven genetics will be a exciting addition for any operation. Don't miss opportunity to by a piece of CCA history and foundation of the Eula cow family. 190T is directly linked to 3 donors currently being flushed. Here's a opportunity to own proven angus genetics.



WMO 1J
SON OF B/R MVP 5247



WOS 20K
Son of WOS 190T



SIRE OF EMBRYOS
YOUNG DALE BELIEVE 46B

Lot 43 KBJ HENRIETTA PRIDE 32W X
YOUNG DALE BELIEVE 46B

SIRE: YDF 46B ♦ 1791677 DAM: KBJ 32W ♦ 1539195

YOUNG DALE XCALIBER 32X

SITZ TRAVELER 043

S YOUNG DALE BELIEVE 46B

D KBJ HENRIETTA PRIDE 32W

YOUNG DALE GRACE 126Z

DRYLAND HENRIETTA PRIDE 724

PE	BW	WW	YW	MILK	CE
EPDS	2.7	56	88	25	-0.5

LOT 43 - SELLING 1 PACKAGE OF 3 EMBRYOS ♦

FOB: BOW VALLEY GENETICS ♦

Here is an opportunity to obtain some old KBJ genetics from HR Hahn Cattle Co. The dam was purchased at the KBJ Dispersal Sale in 2016. We have 5 daughters in the herd and have sold 7 bulls commercially. The sire is the \$120,000 Young Dale Believe 46B that sires big boned, good footed progeny. A neat package here with lots of future.

E
M
B
R
Y
O
S



SEMEN

Lot 44 RED TOWAW MCGREGOR 601J

TRW 601J ♦ 2220519

RED SSS SOLUTION 329Z

RED TOWAW INDEED 104H

S RED SSS CONTENDER 121B

D RED TOWAW COPPER 27W

RED SSS DYNA 688X

RED ANGEL COPPER 5R

	BW	WW	YW	MILK	CE
EPDS	1.2	37	62	29	1.0

LOTS 44A TO 44H - 8 PACKS OF 5 STRAWS ♦

FOB: ALTA GENETICS ♦ USA & CDN QUALIFIED

Macgregor 601J is a dark red, long bodied, stout made rascal with plenty of growth who is put together about as correctly as you can make one. He is sired by Red SSS Contender, who also happens to be the Grandsire of the Granite 74H bull that has done a great job of breeding for us and other top herds around the country. His dam, Copper 27W, traces back to the Copper Lady cow family and is a daughter of our son Thomas's first Red Roundup purchase when he was three. She was a deep bodied, deep red coloured, beauty of a cow that really produced with every try. She was a direct daughter of the maternal legend Indeed 104H and became a donor for Towaw after producing a herdsire and high seller, Red Towaw Jimmy Page, and another daughter that hit the donor pen as well. She has flush progeny working in 3 purebred herds including a herdsire at Rainbow Red Angus and the \$17,000 heifer calf to Kylie Willms in the 2021 Red Roundup Sale.



FULL SISTER



Lot 45 **RED WILBAR HENNESSY 3K**

WJD 3K ♦ 2268829

RED NCJ COMING IN HOT 24E

RED DKF RAZOR 55C

S RED WILBAR HIGHLIGHT 624H

D RED WILBAR LANA 4F

RED WILBAR DOLL 776C

RED WILBAR LANA 129D

	BW	WW	YW	MILK	CE
EPDS	0.1	60	108	29	6.0

LOT 45A TO 45D - SELLING 4 PACKS OF 5 STRAWS ♦

FOB: ALTA GENETICS ♦ CDN & USA QUALIFIED ♦

****Semen is currently being collected at Alta Genetics and will be available no later than March 2024.**

Hennessey is arguably one of the most complete Red Angus bulls we have raised in recent times. He led off our 2022 Bull Sale at \$70,000 to Rohrich Cutting Edge Red Angus, ND. His combination of muscle expression, base width, foot quality and herd bull presence are tough to find in the same bull. Hennessey is backed by a cow that is a favorite on the ranch for an ideal look and a production record that is well on its way to Elite status. His sire, Highlight has been blazing a trail at Wilbar consistently siring power in both the bull and heifer pens. He was recently named Grand Champion Get of Sire at Farm Fair International. Take advantage of the opportunity to acquire some of the first semen available on the 2023 Agribition and Farm Fair Reserve Grand Champion Bull.



RED WILBAR HENNESSY 3K



DAM



SEMIN

Lot 46 RED WOOD COULEE TAURUS 805K

RC 805K ♦ 2285009

RED LCA MERLE 717E

RED COCKBURN ASSASSIN 624D

S RED LCA MAMA TRIED 935

D RED WOOD COULEE KURUBA 805F

RED SOO LINE ANNIE 0135

RED RC KURUBA 206Z

	BW	WW	YW	MILK	CE
EPDS	2.4	40	69	28	-2.0

**LOTS 46A TO 46C - 3 PACKS OF 10 STRAWS ♦
 FOB: ALTA GENETICS ♦ CDN, USA QUALIFIED ♦**

Red Wood Coulee Taurus 805K is a bull I admired when I saw him at Agribition this past fall. Very correct bull with a great foot under him and very good scrotal with a huge top and quarter and soft made. I really enjoy getting this home grown bulls into this event and showcasing them all to you for your breeding program. He will be a contender next year at all shows. These will be the only semen on the market until next fall.



RED WOOD COULEE TAURUS 805K



Lot 47 RED PIE QUARTERBACK 0814

IMP 0814H ♦ 2235608

RED PIE STOCKMAN 4051

SPUR FRANCHISE OF GARTON

S RED PIE QUARTERBACK 789

D RED C-BAR ABIGRACE 636D

RED PIE RUBY 520

RED C-BAR ABIGRACE Y11

	BW	WW	YW	MILK	CE
EPDS	-2.7	31	72	34	13.0

**LOT 47A TO 47D - SELLING 4 PACKAGES OF 5 STRAWS ♦
 FOB: ALTA GENETICS ♦ CDN QUALIFIED ♦**

Red PIE Quarterback 8014 was selected as a \$50,000 sale feature at the 2021 Pieper spring bull sale. His flush mates include the \$75,000 PIE Commander 0100 and PIE Abigrace 0105 who is the dam of the record selling \$400,000 PIE Hollywood 222. Progeny out of this outcross sire are soft made with lots of rib shape and a very attractive look. He is heifer safe and has some of our top bred heifers this year, wedge shaped with ideal udders on the way. We are very excited to use this sire into the future.



DAUGHTER



Lot 48 RED PIE SPECIALIST 430

IMP 0430B ♦ 1875330

RED BECKTON EPIC R397 K

RED PIE CODE RED 9058

S RED LSF SAGA 1040Y

D RED PIE PLAYMATE 232

RED LSF MINOLA T7172 W9041

RED PIE PLAYMATE 028

	BW	WW	YW	MILK	CE
EPDS	-3.2	51	88	29	13.0

LOTS 48A TO 48D - 4 PACKS OF 5 STRAWS ♦

FOB: BOW VALLEY GENETICS ♦

CDN, USA, AUS QUALIFIED ♦

Specialist 430 is a proven multi-trait herd bull that will sire powerful sons with excellent rib shape and depth. His daughters are massive bodied and are very productive. The older they get in our herd, the more we like them, always bringing home heavy calves at weaning that are the right kind. Notable progeny include the \$77,500 Red Cockburn Assassin 624D, \$21,000 Red Wilbar Crackerjack 73F and \$16,000 Red Wilbar Element 220E.



**SON
RED COCKBURN ASSASSIN 642D**



**SON
RED WILBAR CRACKERJACK 73F**



S
E
M
E
N

Lot 49 RED DURALTA 43 FORTRESS 82H

DFLC 82H ♦ 2166397

RED RUST BULL 31B

RED LAZY MC CC DETOUR 2W

S RED SIX MILE FIFTH SENSE 43F

D RED DURALTA 2W BEELINE 24B

RED SIX MILE MINERVA 584B

RED DURALTA 1961 BEELINE 17Z

	BW	WW	YW	MILK	CE
EPDS	-4.2	33	58	31	13.0

LOT 49A TO 49C- SELLING 3 PACKAGES OF 10 STRAWS ♦ FOB: ALTA GENETICS ♦

We could not be more pleased with how he has developed and bred. The females he has covered have calved like a dream and his progeny are curve benders to say the least. He has an unbelievable quiet and easy to handle nature about him. He was noticed and appreciated last year and went on to be slapped Senior Champion and Reserve Champion Red Angus Bull at Farmfair 2022. Now he resides at Pohl Land & Cattle in Wetaskiwin. A calving ease bull that would add some maternal strengths to your herd.



DAUGHTER
RED ROUND UP 2023



DAUGHTER
RED ROUND UP 2023



Lot 50 **RED DUFF RED BEAR 18154**

IMP 1815F ♦ 2268233

RED SLGN WIDELOAD 920W

RED STEWART PANTHER 19X

S RED MANN RED BOX 55C

D RED CC PANTERA 20A

RED PELTON MISS AJA 0839U

RED CCY SAVANNAH 5U

	BW	WW	YW	MILK	CE
EPDS	1.1	54	97	27	4.0

LOT 50A TO 50B - SELLING 2 PACKS OF 5 STRAWS ♦

FOB: ALTA GENETICS ♦

Red Duff Red Bear 18154 is a bull I sourced and obtained a lot of semen after investigating more about him and visiting with the Fischer's from Trademark Genetics down in Texas. Red Bear 18154 was the \$80,000 Bull sold in the Power Plus 2020 Bull Sale to Trademark Genetics. He displays the same power, quality, impressive balance, body shape, and is super attractive through his front end! This bull will continue to attract interest and the folks that have used him will have some very marketable progeny. The progeny I have seen this year on the ground made myself go get more semen from Mandy Fischer and family. He sired the High Selling Heifer Calf in the 2023 Red Round-Up Sale, Red Riverside Marta 304L to Wilbar Cattle Co. Also a very strong string for Steen Angus at Agribiton 2023 was on display this past month. Things will just continue to get better for this bloodline.



RED DUFF RED BEAR 18154



DAUGHTER

L83 RANCH & MOOSE CREEK RED ANGUS



**51A TO 51B - SELLING
2 PACKAGES OF 20
STRAWS ♦
FOB: MOOSE CREEK
RED ANGUS, CDN USA
QUALIFIED ♦**

We are excited to offer the first and possibly only semen on the National Reserve Champion Red Angus Bull. Viper is a soft made, extremely correct and exceptionally sound footed bull. He offers a dark, cherry red hide with added muscle and dimension. In the 3 shows he's ever been exhibited, Viper is undefeated in division and a popular Champion. His full sister is fabulous, which was the decisive factor in purchasing him. We are excited about his potential.

Lot **RED L83 RED VIPER 50K** **51**

NDL 50K ♦ 4669249

RED SOO LINE POWER EYE 161X RED SIX MILE SPENCER 111B

S RED KJHT POWER TAKE OFF D RED L83 TINK 627D

RED SRA PAINTBUCKET RED L83 TINK 118A

	BW	WW	YW	MILK	CE
EPDS	1.3	51	78	29	-6.0

GOMACK RED ANGUS



**LOT 52A TO 52C -
SELLING 3 PACKS OF 10
STRAWS ♦
FOB: GOMACK RED
ANGUS ♦**

Red Gomack Rebel 33j has calving ease written all over him, because of his smooth shoulder and respectable length. Rebels calves follow in his footsteps with flawless bone structure and perfect feet. His sire RSL ICE MAN 260D has an interesting out cross pedigree and consistent, proven calving ease. His damn comes from the Cheroviann Cow family that never seem to disappoint us. she's an easy flushing cow with with awesome udder structure and foot quality.

Lot **RED GOMACK REBEL 33J** **52**

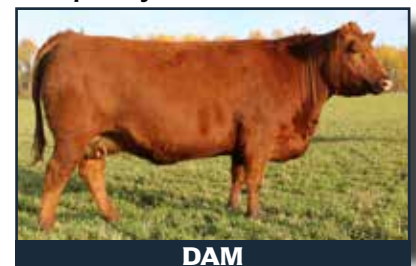
GOM 33J ♦ 2201907

RED NORTHERN ICE MAN 8U RED BRYLOR RITCHER 27X

S RED RSL ICEMAN 260D D RED MKNZIE CHERO 74B

RED RSL SEREBL 298Z RED CHEROVIANN 27S

	BW	WW	YW	MILK	CE
EPDS	-0.1	33	51	24	2.0



DAM

BRANDL CATTLE CO.



Lot 53 **RED FINE LINE MULBERRY 26P**
NVG 26P ♦ 1237972

- RED HR RAMBO ET 91K
S RED COMPASS MULBERRY 449M
 RED BRYLOR MISS ROC 20H
 RED SILVEIRAS REDFORD
D RED DUS FAYETTE 8G
 RED MC DOUGALL FAYETTE 59A

	BW	WW	YW	MILK	CE
EPDS	2.3	53	95	25	3.0

LOT 53 - SELLING 1 PACK OF 8 STRAWS ♦
FOB: ALTA GENETICS ♦ A true Champion that sires Champions. Sires outstanding progeny that are low maintenance, easy fleshing cattle. They have moderate birth weights and his daughters have perfect udders and excellent feet.

BRANDL CATTLE CO.

Lot 54 **RED COMPASS MULBERRY 449M**
SIBB 449M ♦ 1128419

- RED FCC RAMBO 502
S RED HR RAMBO ET 91K
 RED HR MISS PROSPECTOR 26B
 RED LARSON RED LIGHTNING
D RED BRYLOR MISS ROC 20H
 RED CRCC MISS ROC 368D

	BW	WW	YW	MILK	CE
EPDS	2.7	44	87	35	-4.0

LOT 54 - SELLING 1 PACK OF 3 STRAWS ♦
FOB: ALTA GENETICS ♦ Sire of the famed Red Finesline Mulberry 26P. Sires structurally sound, productive offspring.

Lot 55 **RED CYT LEAD-PINE 14P**
CYT 14P ♦ 1227849

- RED ZAMA PINE 517G
S RED BRYLOR LEAD-PINE 83L
 RED BONNY 7468
 RED WILD ROSE LIGHTNING 183J
D RED RAVEN RIVER REBELLO 28M
 RED WILD ROSE REBELLO 137J

	BW	WW	YW	MILK	CE
EPDS	-	-	-	-	-

LOT 55 - SELLING 1 PACK OF 5 STRAWS ♦
FOB: ALTA GENETICS ♦ One of the best Red Angus bulls to add pure performance.

BRANDL CATTLE CO.



Lot 56 **RED BRYLOR NEW TREND 22D**
LMP 22D ♦ 788836

- V D A R NEW TREND 315
S SSS BLACK TREND 13B
 RED SSS MISS DYNAMO 3W
 RED SEAMAN CHIEF 47Y
D RED MEADOW CK MISS SEAMAN 31A
 RED MEADOW CK PRINCESS 10W

	BW	WW	YW	MILK	CE
EPDS	4.2	36	73	38	-7.0

LOT 56 - SELLING 1 PACK OF 8 STRAWS ♦
FOB: ALTA GENETICS ♦ Known world-wide for his awesome daughters that produce superb progeny, both male and female.

**S
E
M
E
N**

BRANDL CATTLE CO.



Lot 57 **RED MRLA RESOURCE 137E**
MRLA 137E ♦ 1955865

S A V RESOURCE 1441
S MRLA RELOAD 56C
 RED MRLA MISS 641Y
 S A V HARVESTOR 0338
D MRLA MISS 4422B
 MRLA MISS 433T

	BW	WW	YW	MILK	CE
EPDS	3.6	36	82	24	-1.0

LOT 57 - SELLING 1 PACK OF 5 STRAWS ♦
FOB: ALTA GENETICS ♦ Sires progeny with eye appeal and muscle mass. 30 open daughters averaged \$9000 in the U2 dispersal. Feature heifer calf at Peiper Red Angus sold for \$75 000 US.

BRANDL CATTLE CO.



Lot 58 **RED BADLANDS NET WORTH 23U**
IMP 23U ♦ 1594762

S A V 8180 TRAVELER 004
S PFFR SHAQ 607
 RED RRM-NANCY 8965-9606
 RED LCC CHEYENNE B221L
D RED BADLANDS MEDORA 406
 RED BADLANDS MEDORA 440

	BW	WW	YW	MILK	CE
EPDS	8.5	58	95	27	-17.0

LOT 58 - SELLING 1 PACK OF 7 STRAWS ♦
FOB: ALTA GENETICS ♦ Performance and mass. Daughters are functional and productive with fertility and longevity.

BRANDL CATTLE CO.



Lot 59 **RED WPRA LEGACY A-314**
IMP 314A ♦ 1777454

LAZY MC LOOKOUT 37U
S RED LAZY MC EYE SPY 64Y
 RED LAZY MC GOLD DESIGN 68U
 RED BFCK CHEROKEE CNYN 4912
D RED WPRA EVERLEDA ENTENSE 610
 ER EVERELDA ENTENSE P578

	BW	WW	YW	MILK	CE
EPDS	4.3	58	91	27	-5.0

LOT 59 - SELLING 1 PACK OF 3 STRAWS ♦
FOB: ALTA GENETICS ♦ Topped the 2014 Cowgirls sale at \$109,000. Offers an incredible set of EPDs.

**S
E
M
E
N**

BRANDL CATTLE CO.



Lot 60 **RED BASIN SENSATION 702E**

IMP 702E ♦ 991759

SCHURRTOP FORTUNE 3261
S GARDENS SENSATION 039 S1
 GREEN GARDEN PROTET 739C
 IMPACT 2001 G G
D STEVENSON ELEMRERE 538C
 JRS ELEMRERE 977A

	BW	WW	YW	MILK	CE
EPDS	1.2	33	61	18	6.0

LOT 60 - SELLING 1 PACK OF 7 STRAWS ♦
FOB: ALTA GENETICS ♦ Outcross calving ease sensation with muscle and performance.

ENCLAVE ANGUS



Lot 61 **RED PREMIER PATRIOT 16**

IMP 0016L ♦ 536769

ANKONIAN DYNAMO
S SAYRE PATRIOT
 BLACKCAP D611 OF SAYRE
 CAMILLA WYE 60A
D CAMILLA BELLE 54D
 SANGUS BELLE 30Y

	BW	WW	YW	MILK	CE
EPDS	1.8	22	37	20	0.0

LOT 61A - 61B -
SELLING 2 PACKS OF 4 STRAWS ♦
FOB: ENCLAVE ANGUS ♦

TOWAW CATTLE CO.



Lot 62 **RED TOWAW INDEED 104H**

WDV 104H ♦ 942651

RED ROCK CREEK TREK
S RED CC EXPANSION 5E
 RED COULEE CREST ANNETTE 4C
 RED ARSF BOLD EDITION 2A
D RED TOWAW MOLLY 67C
 RED TOWAW MOLLY 34R

	BW	WW	YW	MILK	CE
EPDS	2.9	36	57	30	-5.0

LOT 62A - 62C -
SELLING 3 PACK OF 2 STRAWS ♦
FOB: TOWAW CATTLE CO. ♦

Red Towaw Indeed has made his mark in the Red Angus industry as the prepotent maternal bull of the last 25 years. He was voted the G.O.A.T Red Angus bull in the run up to the 50th Red Roundup Sale on Facebook. He has sired multiple Champions, in multiple decades, and is still very much a sire that is important in current pedigrees. He is the maternal Grand sire of Towaw's \$12,500 heifer at Red Roundup, and Red Towaw McGregor 601J, Canadian Red Angus Show Bull of the Year, as well as heifers in Wheeler's show string that are progeny of 2013 Agribition Champion female, Red Bar EL Meg 189Z.

HR HAHN CATTLE CO.



Lot 63 RED SSS **SOLDIER** 365W

SBB 365W ♦ 1533473

- RED SVR KNIGHT 73P
- S RED SVR KNIGHT 236T**
RED SOUTH VIEW MISS MAXI 45H
RED CROWFOOT OLE'S OSCAR 2042M
- D RED SSS BELLE 342S**
RED SSS BELLE 612P

	BW	WW	YW	MILK	CE
EPDS	2.5	42	72	25	-1.0

**LOT 63 - SELLING 1 PACK OF 6 STRAWS ♦
FOB: HR HAHN CATTLE CO. ♦**

HR HAHN CATTLE CO.



Lot 64 RED BJR **MAKE MY DAY** 981

IMP 1193C ♦ 846590

- BJR HI ROLLER 211
- S RED BJR EASY RIDER 781**
RED BJR DIPY DO 355-809
BJR FIRE-MAN 0150
- D RED BJR TOW KANA 117-710**
RED BJR TOWKANA 355-71L

	BW	WW	YW	MILK	CE
EPDS	-1.6	34	66	26	3.0

**LOT 64 - SELLING 1 PACK OF 10 STRAWS ♦
FOB: HR HAHN CATTLE CO. ♦**

HR HAHN CATTLE CO.



Lot 65 RED SSS **STAUNCH** 64Y

SBB 64Y ♦ 1654946

- RED CROWFOOT OLE'S OSCAR 2042M
- S RED SSS OLY 554T**
RED SSS GOLD EDGE 77R
RED FABULOUS GRAND PRIX 6R
- D RED SSS SCAARA 429W**
RED SSS SCAARA 9R

	BW	WW	YW	MILK	CE
EPDS	-0.5	48	89	35	4.0

**LOT 65 - SELLING 1 PACK OF 4 STRAWS ♦
FOB: HR HAHN CATTLE CO. ♦**

**S
E
M
E
N**



Lot 66 **RED WHEEL GINGER BARBIE 1E**

DAM: MFW 1E ♦ 1980746

LFE BA LEWIS 3008B

D RED WHEEL GINGER BARBIE 1E

BLACK WHEEL BARBIE 84C

**LOT 66A - SELLING 1 PACKAGE OF 4 EMBRYOS SIRED BY
RED LWNBRG SLOWBURN 102H x RED WHEEL GINGER BARBIE 1E ♦
FOB: PEAK GENETICS ♦**

PE	BW	WW	YW	MILK	CE
EPDS	1.8	57	96	31	3.5

**LOT 66B - SELLING 1 PACKAGE OF 3 EMBRYOS SIRED BY
RED SSS CONTENDER 121B x RED WHEEL GINGER BARBIE 1E ♦
FOB: PEAK GENETICS ♦**

PE	BW	WW	YW	MILK	CE
EPDS	2.3	57	90	30	0.5



**SIRE OF LOT 66A EMBRYOS
RED LWNBRG SLOWBURN 102H**



**SIRE OF LOT 66B EMBRYOS
RED SSS CONTENDER 121B**

Ginger Barbie has been appraised as an ideal Red Angus female for her udder quality, massive rib shape, added length and extension. All qualities that earned her the 2022 Agribition Grand Champion Female title as a five year old. Kenray just has Senior Bull Calf Champion at the national Angus Show, a son of Ginger Barbie. The mating are offer are as marketbale as ever, so take a gander at this interesting lot.



SIRE OF EMBRYOS
RED DMM RUMBLE 74J

**Lot
67**

RED TR GLITTER 7150E
RED DMM RUMBLE 74J



SIRE: DMM 74J ♦ 2227974 **DAM:** CBT 7150E ♦ 1970141

RED GOAD MESSIN' AROUND 144'1

RED TR ROLLS ROYCE 44B

S RED DMM RUMBLE 74J

D RED TR GLITTER 7150E

GOAD PRIDE 153'14

RED TR GLITTER 2048Z

PE	BW	WW	YW	MILK	CE
EPDS	0.7	43	71	30	7.0

LOT 67 - SELLING 1 PACKAGE OF 3 EMBRYOS ♦

FOB: BOW VALLEY GENETICS ♦

We purchased Glitter in the fall of 2021 at the LLB Angus Reduction Sale. Glitter is already making her mark in our herd with her first calf Red Riverside Knuckleball 201K being the high selling bull at our annual bull sale this past spring, as well as her 2023 heifer calf being one of the top heifers in the replacement pen. Glitter herself is moderately made but extremely balanced in her type and design, she has an excellent foot with plenty of heel. We are super excited with this mating, especially after seeing the first progeny of Red DMM Rumble 74J at Shiloh Cattle Company.



CBT 7150E SON

**E
M
B
R
Y
O
S**



OBI LIVESTOCK LTD.
28 GLENDALE BLVD
RED DEER, AB
T4P 2P3

CANADA



POSTES

POST

CANADA



Postage paid

Port payé

Personalized
Mail

Courrier
personnalisé

8343874

RETURN POSTAGE GUARANTEED
PORT DE RETOUR GARANTI



**3rd ANNUAL
FROZEN
GENETICS
on**

ICE

CREATED BY:



DESIGNS