

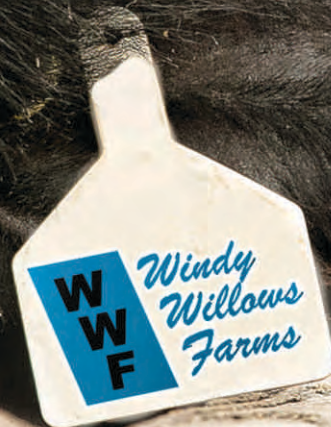
# WINDY WILLOWS FARMS

**15TH ANNUAL  
BULL & FEMALE SALE  
TUESDAY APRIL 3, 2018  
AT 1:00 PM**

**WINDY WILLOWS FARMS  
HODGEVILLE, SK**

**(16 MILES SOUTH OF HWY #1 ON HWY #19)**

**FOLLOWED BY  
THE CEDARLEA CHAROLAIS  
GIT "R DONE BULL SALE**





# GRAND

## WINDY WILLOWS BULL & FEMALE SALE

TUESDAY APRIL 3, 2018 ♦ 1:00 PM

WINDY WILLOWS FARMS, HODGEVILLE, SK  
(16 MILES SOUTH OF HWY #1 ON HWY #19)



Join us for complimentary  
"Beef Barbecue Lunch"

Last Year's Reviews Were Great!

Videos of sale bulls on  
[www.livestockplus.ca](http://www.livestockplus.ca)  
[www.windywillows.ca](http://www.windywillows.ca)

### OFFERING: 76 LOTS

- 47 Black Angus Yearling Bulls
- 16 Red Angus Yearling Bulls
- 8 Black Angus Open Heifers
- 5 Red Angus Open Heifers

***You Won't Know - If You Don't Go!***

**Auctioneer:** Steve Dorran .....(760) 972-7736

**Ringmen:**

Mark Stock .....(403) 357-8104

Craig Flewelling .....(403) 556-0515

Tyler Harris, Order Buyer .....(306) 747-5882

**Internet Bidding:**

Bridget Andrews, Livestock Media Plus .....(306) 631-9254

**Accommodations:**

Super 8, Swift Current .....(306) 778-6088

**Insurance:** Earl Haubrich, EMTA Agencies .....(306) 677-2207



SALE MANAGED BY



### OBI LIVESTOCK LTD.

Mark Holowaychuk (403) 896-4990

Roger Peters (403) 828-9815

[www.cattlemanagement.ca](http://www.cattlemanagement.ca)

[o.b.i@shaw.ca](mailto:o.b.i@shaw.ca)

**SALE DAY PHONES: COLLIN'S CELL: (306) 677-7544**  
**MARK'S CELL: (403) 896-4990 • ROGER'S CELL: (403) 828-9815**

## SOME THINGS YOU SHOULD KNOW...

- 1. INFORMATION:** We strive to provide you with useful information to help you with bull selection. In addition to the data in this catalog, current weights and scrotal measurements will be available sale day.
- 2. CALVING EASE:** Our cows and heifers generally calve without problems. We have only assisted 4 heifers in the last 3 years.
- 3. PREWEANING:** We started calving 2 to 3 weeks later last year so our bulls are younger than in previous years. To ease the stress of weaning and to ensure our bulls are ready to breed by sale time and we have introduced some creep prior to weaning.
- 4. RATIONS:** Our bulls are started on a ration of silage and chopped alfalfa hay in a TMR (Total Mixed Ration). Mineral and Vitamin fortified 14% pellets are gradually added followed by some rolled barley to meet their energy requirements. A TMR and large pens for adequate exercise keep the bulls healthy and sound.
- 5. COWHERD:** Our cows are not pampered! They graze on swaths and native grass through the winter until calving starts at the end of February. It makes sense to buy bulls from a cowherd that works for a living!
- 6. EPDs:** We believe that EPDs are a useful tool to help evaluate certain traits in our cattle, BUT... Quality cattle are more important than the numbers used to describe them.
- 7. SALE ELIGIBILITY:** Only the best of 150 bulls weaned sell. Each bull must meet our expectations before he earns a spot in the sale.
- 8. DISPOSITION:** We continue to get compliments about the disposition of our bulls from everyone who works with them. We are a family operation and disposition is as important to us as it is to you.
- 9. GUARANTEE:** Our goal is to provide you with quality bulls capable of getting your cows pregnant. If anything happens to the bull you purchase let us know right away! Our responsibility does not end after the sale!
- 10. CUSTOMER SERVICE:** We offer free delivery within 200 miles or \$75 off if you pick up your bull on sale day. If you have any questions, or concerns after the sale...Call us first, we want to help!

# LIVESTOCK<sup>media</sup>+

partnerships beyond the farm gate

Register to Bid Online or View the Sale @ [www.livestockplus.ca](http://www.livestockplus.ca)  
**Contact: Bridget Andrews: 306-631-9254**  
Moose Jaw, Saskatchewan, Canada

## VOLUME DISCOUNT

WE ARE OFFERING A VOLUME DISCOUNT FOR 5 OR MORE BULLS, BLACK, RED OR WHITE.  
THE DISCOUNT IS 5% FOR 5 BULLS, 6% FOR 6 BULLS AND SO ON, UP TO 10% FOR 10 OR MORE BULLS.

## WELCOME TO THE 15TH ANNUAL WINDY WILLOWS BULL & FEMALE SALE

Where once again you will have the opportunity to evaluate one of the best, most honest sets of Angus cattle for sale each year!

Collin, Michelle and Hillary continue to be a leading seedstock operation in the beef industry. Maternal traits, calving ease and aggressive herd selection are always at the top of the list for the Windy Willows program. New A.I. sires were used again and the quality of the progeny shows that the cowherd is an exceptional group of brood matrons. As I was doing this catalog, the uniformity of these bulls stands and that says something again about the cowherd. If you get a chance to tour the cows, please do so.

Buying bulls from good folks and a good program is something we all strive for. Windy Willows go above and beyond with service for their customers, this not always found at many places. Once again, the bulls are performance tested and developed with you in mind. As well the bulls have been carcass evaluated so that you may use this information for evaluating your prospective purchases.

This past year has also had a lot of changes as you all know dad passed away and we are all dealing with different feelings. Collin, Michelle and Hillary were one of dad's favorite families in the industry. Whenever we talked about the Sauder family, the words were always of what great people they were. The decisions that Collin made over the past 20 years in the Angus industry were discussed with dad and the bond they had formed was one of trust, friendship, laughter and always have the respect from each other. A great bond was broken but will never ever be forgotten.

If you are unable to attend please do visit with anyone of the sales staff or OBI and we certainly will work with you to secure the purchases for your needs.

*Mark Hofowaychuk, DBI*



# CARCASS DATA

In order to use body composition EPD's or ultrasound data to its full potential, a breeder must have an understanding of the ultrasound terminology. Several of the ultrasound measurements are comparable to the familiar carcass measurements. The data is simply collected on yearling bulls and heifers instead of market ready steers. Take a step back from looking at the numbers and become comfortable with the terminology.

## ULTRASOUND CARCASS MEASUREMENTS

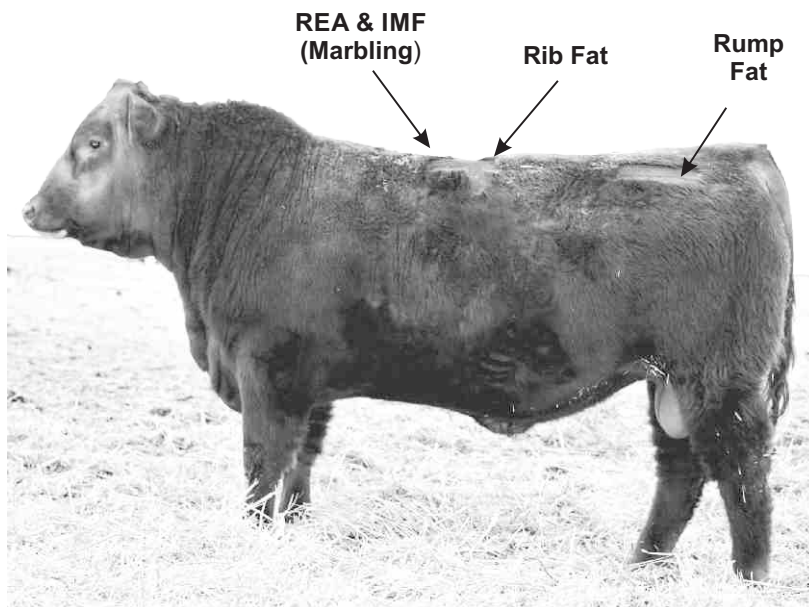
**Rib Fat/Backfat:** An external fat measurement taken between the 12th and 13th Reported in inches. Rib fat is the main trait that affects percent lean meat yield ie; A1, A2, A3, & A4. Percent lean meat yield is the calculation that estimates the percent of lean muscle on the carcass. For example, a lean meat yield of 60% on a 1000lb carcass would have 600lbs of lean muscle and 400lbs of bone and fat.

**Ribeye Area (REA):** An area measurement of the loin or ribeye muscle. Reported in square inches. While an increase in backfat will lower the percent lean meat yield an increase in REA will raise the percent lean meat yield.

**Rump Fat:** An external fat measurement taken from an image collected between the hooks and the pins of the animal. Reported in inches. The rump fat measurement, coupled with the rib fat measurement will increase the accuracy of percent lean meat yield.

### **Intramuscular Fat (%IMF)/ Marbling:**

This measurement determines the amount of fat within the muscle. Reported in "%", it is used to determine the quality grade of the carcass. As %IMF increases so does juiciness, flavor, and tenderness, all factors affecting eating quality.



% IMF	(US) QUALITY GRADE (CAN)	
2.3 - 3.0	SELECT -	AA -
3.1 - 3.9	SELECT +	AA +
4.0 - 5.7	CHOICE -	AAA -
5.8 - 7.6	CHOICE 0	AAA 0
7.7 - 9.7	CHOICE +	AAA +
9.8 - 12.1	PRIME -	PRIME -
12.2 +	PRIME 0	PRIME 0

## USING ULTRASOUND DATA TO SELECT BULLS

1. Fat levels, including marbling, will normally be higher in steers than in similarly fed bulls due to the lack of testosterone.
2. Carcass traits such as ribeye area (REA) and marbling (%IMF) are highly heritable, therefore using sires with high ultrasound scores for these traits will significantly improve carcass quality.
3. Significant premiums are being paid by packers for carcasses that meet high quality grade and yield grade standards. There are extra profits to be made!
4. Less backfat is not always better! Extremely low backfat bulls may sire steers with high yield grades, but they may be slow to finish. Their heifer counterparts may reach puberty later and have more difficulty milking, rebreeding and maintaining a short calving interval. On the other hand, overfat bulls may have reduced fertility.
5. Evaluate your cowherd, decide what kind of progeny you wish to produce and choose bulls with the ultrasound data to match your needs.

# WHAT THE NUMBERS MEAN!

**Windy Willows Farms have been performance testing our herd on the Canadian Angus Performance Program (CAP) since its inception..** We use the information within our own herd and we pride ourselves in providing useful performance information to you so that you can use it to help select the bull or bulls that best suit your operation. We do understand, however, that all these numbers can be mind boggling. This page will try to make some sense of the performance information that is provided in this catalog so that you may use it more effectively.

## **GROWTH TRAITS**

**Birth Weight (BW)** – the actual weight of the calf taken within 24 hours of birth, not a guess and not a taped estimate.

**Calving Ease (CE)** – describes the type of birth. Codes used are: U – unassisted, E – easy pull, H – hard pull, M – malpresentation and S – surgical.

**Age of Dam (AOD)** – age of dam at time of calving. Two year olds, 3 year olds and very old cows tend to have lighter calves at birth.

**Weaning Weight (WW) or (Adjusted 205 Day Wt)** - the weight taken at weaning and adjusted to 205 days of age, also adjusted for the age of dam.

**Weaning Index or Adjusted 205 Day Index** – a means of comparing an individual bull's weaning weight to the average weaning weight of his group. Weaning weights and indexes are only comparable within the herd of origin, not between herds.

**Yearling Weight (YW)** – the weight taken at end of test and adjusted to 365 days of age.

**Average Daily Gain (ADG)** – the average daily gain while on 112 day gain test. The gain test begins after a 28 day adjustment period to allow bulls from the 4 different herds to adapt to a common environment at the feedlot.

**ADG Index** – a means of comparing an individual bull's ADG to the average of his group. It is expressed as a percentage of the group ADG.

**Weight Per Day of Age (WPDA)** – the weight of a bull at end of test divided by his age in days.

**WPDA Index** - a means of relating an individual bull's WPDA to the average of his group. It is expressed as a percentage of the group WPDA.

**What is an EPD? (Expected Progeny Difference)** – An EPD is a measure of differences in a trait that will be expected from progeny of different sires. EPDs are expressed in pounds plus (+) or minus (-) a zero standard.

**Why are EPDs valuable as a selection tool?** – EPDs can be used to compare bulls in different herds within the same breed. They are based on an individual's performance as well as that of his relatives and progeny. They factor out the management and environmental differences that may exist between herds.

**Accuracy (Acc)** – the more information that is used to calculate an EPD, the more reliable it is. Accuracies are expressed as a number between 0 and 1. The closer the accuracy is to 1, the greater the probability that the EPD will not change with the addition of more information.

**BW EPD** - the difference in birth weight you would expect between a bull's calves and calves from a bull with a BW EPD of 0. It is a much more accurate indication of expected progeny birth weight than the bull's own BW. All the Black bulls designated as Calving Ease in this catalog have BW EPDs of +3.0 or less. Black bulls designated as Calving Ease Elite have BW EPDs below +1.0.

**WW EPD** – the difference in weaning weight you would expect between a bull's calves and calves from a bull with a WW EPD of 0. Bulls with higher WW EPDs will sire heavier calves at weaning.

**YW EPD** – the difference in yearling weight you would expect between a bull's calves and calves from a bull with a YW EPD of 0. Bulls with higher YW EPDs will sire heavier calves at yearling age.

**MILK EPD** – the difference in weaning weight attributable to milking ability you would expect from a bull's daughters' progeny and progeny of daughters of a bull with a MILK EPD of 0. Bulls with higher MILK EPDs will sire daughters that will have heavier calves at weaning due to their milking ability.

**Average EPD** - It is helpful to know the average EPD for all calves born in 2017

	<b>BW</b>	<b>WW</b>	<b>YW</b>	<b>MILK</b>
2017 Black average	+2.3	+45	+79	+21
2017 Red average	-0.6	+51	+78	+16

It is important to note that Black and Red EPDs cannot be directly compared.

**Percentile** – a ranking of a bull within the population by percentage. It is helpful to know where a bull ranks in the population for a particular trait.

## **BULL WARRANTY**

We guarantee to provide you with a sound, fertile bull capable of servicing a reasonable number of cows. In the event that your bull is a non-satisfactory breeder the seller will not, under any circumstances, be responsible for more than the original selling price of any bull or female sold in the sale. The consignors will not provide replacement or credit for physical injury or mismanagement. Therefore we stress the importance of insurance on your bull. An insurance agent will be available on sale day.

**WINDY WILLOWS RESERVES THE RIGHT TO DRAW SEMEN FOR IN-HERD USE ON ANY BULL IN THE SALE, AT THE BUYER'S CONVENIENCE AND OUR EXPENSE.**

## **CALVING EASE & CALVING EASE ELITE BULLS**

In order to assist you in your selections, we have designated some of the bulls as Calving Ease or Calving Ease Elite based primarily on their BW EPD.

**Calving Ease:** These bulls generally have BW EPDs below the breed average, +2.3 for Black bulls and 0 for Red bulls

**Calving Ease Elite:** These bulls generally have BW EPDs below +1 for Black bulls and below -1 for Red bulls. Most of these bulls represent at least two generations of calving ease sires.

These designations are general guidelines and only you can decide which bulls are appropriate for your situation.



## SOUTH WEST ANIMAL HEALTH CENTRE PC (2013) LTD.

P.O. Box 640, Swift Current, SK S9H 3W7 Canada  
Phone: (306) 773-4121 (24 Hours) Fax: (306) 773-1811  
Email: swahc@t2.net  
Located on No. 1 Highway West of Swift Current

Windy Willows Angus has been a client with the South West Animal Health Centre for a long time. They are on an extensive herd health program that stays current with preventative medicine protocols including vaccination, deworming, and nutrition.

The breeding herd is on a modified live viral protocol which protects against BVDV (Type I and II), BRSV, PI3, and IBR. Calves are vaccinated in spring, fall, and again the following spring as yearlings with the similar modified live product as well as Clostridial, H. somnus, and M. hemolytica to insure the highest health status possible.

These protocols are essential in providing their clients with healthy replacements that are at minimal risk of becoming sick or transmitting disease. The breeding herd protocol guarantees that there are no persistently infected BVDV animals born at this ranch.

All cattle receive an ivermectin pour-on in the fall. The calves are weaned in October and are fed a balanced ration to allow them to grow to their genetic potential.

All bulls are semen tested and only the satisfactory potential breeders sell in their sale with the non-testers supplying a freezer beef clientele.

Best of luck with your purchase(s).

Glen Griffin DVM



Proud Sponsor of the  
Coffee and Donuts  
Sale Day Morning!

A HUGE THANK YOU TO: CLIPPING SALE CATTLE ROSEMARY CURRIE & JEFF TRASK. PICTURING SALE CATTLE TYLER HARRIS & WYATT MILLER, ROD WENDORFF FOR ULTRASOUND SCANNING, HENRY HARDER FOR DAILY CHORES AND SALE HELP CREW.

### TERMS & CONDITIONS

**TERMS:** The terms of the sale are cash or cheque payable at par. Settlement to be made immediately after the completion of the sale. The right of property shall not pass until after settlement is made. All settlements must be made with the clerk of the sale before any cattle will be released. All monies are Canadian funds.

**BIDS:** Every animal entering the sale ring will be sold to the highest bidder.

**DISPUTES:** In case of disputes, bidding will be reopened between the parties involved. If no further bid is made, the buyer will be the person from whom the auctioneer accepted the last bid. The auctioneer's decision of all disputes is final.

**ANNOUNCEMENTS:** All announcements made from the auction block will take precedence over the printed matter in the catalogue. Buyers are therefore cautioned to pay close attention to any such announcements.

**PURCHASER'S RISK:** Each animal becomes the risk of the purchaser as soon as sold.

**INSURANCE:** Insurance can be arranged for through the sales clerk.

**CERTIFICATE OF REGISTRATION:** Each animal will carry a Registration Certificate issued by the Canadian Angus Association. A certificate of registry, duly transferred, will be furnished to the buyer after payment has been made.

**ACCIDENTS:** Although every precaution will be taken to protect the safety and comfort of buyers, neither the sale management nor the auctioneer assume any responsibility in this matter and disclaim any liability, legal or otherwise, in the event of accident or loss of property.

**LIABILITIES:** All persons attending the sale do so at their own risk and sellers assume no liability, legal or otherwise, for any accidents occurring in or about the premises.

**EXPORT TESTING:** Required health certificates for cattle being exported will be provided.



Welcome to the

# 15TH ANNUAL GTT 'R DONE BULL AND FEMALE SALE



*Collin, Michelle & Hillary*

Another year has passed and, as usual, each presents new challenges. Our cowherd always pulls us through, the Angus cow is truly adaptable! The black bulls on offer this year include sons of International, Final Product, Seedstock and Zorian among others, all breed leaders in profitable beef production. Our own bulls Focal Point, Boomer and Big Bang have also sired bulls that will keep you in the cow business. Once again we have an outstanding set of red bulls by our performance leader, Provincial, calving ease sons of Detour and the first sons of our new red sire Revenue. The open heifers we are offering allow you to choose from the heart of our breeding program.

The folks at Cedarlea have been great partners in this sale and we are pleased to welcome little Griffin Bruce Hawkins to the team.

We value both your business and your friendship so rest assured that we are committed to your success after the sale. Call us if we can be of any assistance now or later.

*Collin, Michelle & Hillary*

P.S. - We are committed to providing you with a sound, fertile breeding bull. The mothers of these bulls have sound feet and trouble-free udders. We guarantee it!



2018 SCHOOL MIXED CURLING TEAM



GRAND CHAMPION STEER BRANDON 2017

**WINDY WILLOWS FARMS**

Collin, Michelle & Hillary Sauder • Box 55, Hodgeville, SK, S0H 2B0

(306) 677-2507 • Cell: (306) 677-7544 • [windy.willows@sasktel.net](mailto:windy.willows@sasktel.net) • [www.windywillows.ca](http://www.windywillows.ca)

# BLACK ANGUS BULLS

## KG FOCAL POINT 2013

IMP 2013Z JANUARY 22 2012 #1819186

BW: 56 LBS.

## REFERENCE SIRE

SA FOCUS OF E R  
MYTTY IN FOCUS  
MYTTY COUNTESS 906  
S: **KG FOCAL POINT 8100**  
KG 5594 TRAVELER 3020  
KG PRINCESS 6304  
KG PRINCESS 1149

BASIN MAX 602C  
DIAMOND MAX T549  
DIAMOND BLACKCAP 154R  
D: **KG RITO LADY 0229**  
SITZ RAINMAKER 9723  
KG RITO LADY 7681  
KG RITO LADY 8187



BW	WW	YW	MILK	REA	%IMF	FAT
+0.4	+53	+100	+25	+0.54	+0.49	-0.004

KG Focal Point 2013 who came to us as the lead off bull in the KG Ranch bull sale at \$17,000. His sire is the ABS bull, Focal Point 8100 and his dam is from the same cow family as the Genex calving ease sire, KG Solution 0018. Focal Point has proven to be a very valuable breeding bull as he covers all the bases. We have used him on heifers with excellent results and his calves just get better and better as they get older. This sire group has exceptional thickness, are moderate framed, very masculine and have lots and lots of hair. His daughters are now in production and they are deep broody females with superior teat and udder qualities. Focal Point has sired many of our features and high selling bulls and heifers in previous sales. Focal Point is owned with KG Ranch.



## WINDY WILLOWS FOCAL POINT 42E

WWG 42E FEBRUARY 16 2017 #2014110

1

S: **KG FOCAL POINT 2013**

GEIS BALOO 13'08  
MJLC BOOMER 19Y  
MJLC CATHERINE 70M  
D: **WWF BOOMER QUEEN 112B**  
HARB PENDLETON 765 J H  
WWF PENDLETON QUEEN 98Y  
WWF ALLIANCE QUEEN 59R

	WTs	EPDs
<b>BW</b>	76	+0.3
<b>WW</b>	708	+49
<b>YW</b>	1345	+94
<b>MILK</b>	-	+26
<b>AGE DAM</b>	3	-
<b>TEST ADG</b>	3.98	-
<b>CALVING EASE ELITE</b>		

LMY	RIB EYE	%IMF	RIB FAT	RUMP FAT
60.7	14.60	3.56	0.38	0.35

Focal Point 42E comes to the top as the best son of Focal Point 2013 in his calf crop. Phenotypically, he has what we all look for in a herdsire prospect, a long level rump, deep rib, big top, lots of hair and very masculine. This bull has exceptional performance as he was the high indexing calf in his group at weaning and the 2nd high indexing bull as a yearling. Not only does he have superior performance, he also has excellent carcass traits with a 14.60 sq inch ribeye, first in his group and a 123 index for %IMF or marbling. His dam is a Boomer daughter that always looks good when you see her and is establishing an outstanding production record. If you are looking for a bull with a pedigree that is a little different from the mainstream and a superior individual in his own right, you may have found him!



## WINDY WILLOWS FOCAL POINT 24E

2

TW WW 24E FEBRUARY 11 2017 #1991632

S: KG FOCAL POINT 2013

CONNEALY ONWARD  
SITZ UPWARD 307R  
SITZ HENRIETTA PRIDE 81M

D: WWF UPWARD MISSIE 94Y

BAD LANDS AMBUSH 45M  
WWF AMBUSH MISSIE 102T  
WWF BANDO MISSIE 17N CAC

LMY	RIB EYE	%IMF	RIB FAT	RUMP FAT
63.0	10.62	3.49	0.17	0.22

	WTs	EPDs
<b>BW</b>	82	+2.4
<b>WW</b>	630	+58
<b>YW</b>	1126	+107
<b>MILK</b>	-	+25
<b>AGE DAM</b>	6	-
<b>TEST ADG</b>	3.10	-
<b>CALVING EASE</b>		

If cattle are going to be efficient at utilizing forage they need to have plenty of capacity and this bull certainly has that, as is typical of the Focal Point progeny. His dam was selected by David Johnson of JL Livestock at our December Female Production Sale.



## WINDY WILLOWS FOCAL POINT 36E

3

WW 36E FEBRUARY 15 2017 #1991643

S: KG FOCAL POINT 2013

SITZ UPWARD 307R  
WINDY WILLOWS UPPER CUT 44Y  
WWF AMBUSH BLACKBIRD 100R

D: WWF UPPER CUT BARBARA 242B

BAD LANDS RIGHT TIME 78N  
WWF RIGHT TIME BARBARA 42T  
WWF KRUGERRAND BARBARA 144P

LMY	RIB EYE	%IMF	RIB FAT	RUMP FAT
61.9	13.78	2.89	0.31	0.35

	WTs	EPDs
<b>BW</b>	66	-1.2
<b>WW</b>	621	+46
<b>YW</b>	1271	+93
<b>MILK</b>	-	+24
<b>AGE DAM</b>	3	-
<b>TEST ADG</b>	4.06	-
<b>CALVING EASE ELITE</b>		

Focal Point 36E is a soggy easy fleshing kind of bull that should be a very easy calver. His mother did a great job on him and he continued to grow as he was the highest indexing bull in his group as a yearling.



## WINDY WILLOWS FOCAL POINT 44E

4

WW 44E FEBRUARY 16 2017 #1991649

S: KG FOCAL POINT 2013

SITZ UPWARD 307R  
SITZ UP COUNTRY 428W  
SITZ ELLUNA ELITE 94P

D: WINDY WILLOWS PRIDE 43A

DDA ALTMAN 11Z  
ER PRIDE P477  
JR PRIDE 026L

LMY	RIB EYE	%IMF	RIB FAT	RUMP FAT
60.8	14.00	3.87	0.36	0.16

	WTs	EPDs
<b>BW</b>	82	+1.8
<b>WW</b>	692	+57
<b>YW</b>	1337	+112
<b>MILK</b>	-	+28
<b>AGE DAM</b>	4	-
<b>TEST ADG</b>	4.03	-

Focal Point 44E is a high performing son of 2013 with a little more scale. His mother came in dam from KG Ranch when we purchased a draft of top producing cows from that prominent Montana herd. This cow also has sons working for Teepee Ridge Ranch and Van Len Angus.





## WINDY WILLOWS FOCAL POINT 109E

WW 109E MARCH 02 2017 #2000042

5

S: KG FOCAL POINT 2013

COLE CREEK BLACK CEDAR 46P  
COLE CREEK CEDAR RIDGE 1V  
COLE CREEK CLOVANADA 49S  
D: WWF CEDAR RIDGE LADY LEE 119A  
BAD LANDS RIGHT TIME 78N  
WWF RIGHT TIME LADY LEE 99X  
WWF ADVANTAGE LADY LEE 47K

LMY	RIB EYE	%IMF	RIB FAT	RUMP FAT
63.2	13.44	2.17	0.25	0.27

	WTs	EPDs
BW	84	+1.6
WW	703	+52
YW	1259	+92
MILK	-	+28
AGE DAM	4	-
TEST ADG	3.48	-
CALVING EASE		

This clean made bull has a full sister retained in the herd and a full brother working for Wittman Farm & Ranch. The grand dam, Lady Lee 99X is an Elite Dam and 119A is well on the way to becoming one herself.

## WINDY WILLOWS FOCAL POINT 116E

WW 116E MARCH 04 2017 #2000045

6

S: KG FOCAL POINT 2013

HRH NEW STD 9M 1S  
KBJ ABOVE STANDARD 78X  
HRH POLLYANNA 6R 2U  
D: WWF STANDARD HEROINE 71B  
BAD LANDS AMBUSH 45M  
WWF AMBUSH HEROINE 107U  
LENLOOK HEROINE 50L

LMY	RIB EYE	%IMF	RIB FAT	RUMP FAT
63.7	13.75	2.43	0.24	0.32

	WTs	EPDs
BW	84	+1.9
WW	608	+46
YW	1189	+82
MILK	-	+22
AGE DAM	3	-
TEST ADG	3.63	-
CALVING EASE		

We are retaining as many Focal Point daughters as possible as they are developing into broody cows with excellent udder quality.



## WINDY WILLOWS FOCAL POINT 120E

WW 120E MARCH 05 2017 #2000049

7

S: KG FOCAL POINT 2013

GEIS BALOO 13'08  
MJLC BOOMER 19Y  
MJLC CATHERINE 70M  
D: WWF BOOMER EVELINE 120B  
SITZ UPWARD 307R  
WWF UPWARD EVELINE 83Y  
WWF AMBUSH EVELINE 136S

LMY	RIB EYE	%IMF	RIB FAT	RUMP FAT
62.1	13.37	3.62	0.29	0.38

	WTs	EPDs
BW	80	+1.9
WW	690	+54
YW	1210	+92
MILK	-	+24
AGE DAM	3	-
TEST ADG	3.25	-
CALVING EASE		

We feel very fortunate to have found two great breeding bulls like Boomer and Focal Point in succession. These two sires will certainly strengthen our cowherd. This bull combines their genetics. Weaning index of 116





**WINDY WILLOWS FOCAL POINT 121E**  
**WW 121E MARCH 05 2017 #2000050**

**8**

**S: KG FOCAL POINT 2013**

CONNEALY ONWARD  
 SITZ UPWARD 307R  
 SITZ HENRIETTA PRIDE 81M

**D: WWF UPWARD QUEEN 49Z**

SITZ ALLIANCE 6595  
 WWF ALLIANCE QUEEN 59R  
 WWF TOUCHSTONE QUEEN 13E

LMY	RIB EYE	%IMF	RIB FAT	RUMP FAT
62.4	11.15	3.01	0.21	0.36

	WTs	EPDs
<b>BW</b>	74	+0.1
<b>WW</b>	648	+49
<b>YW</b>	1071	+83
<b>MILK</b>	-	+27
<b>AGE DAM</b>	5	-
<b>TEST ADG</b>	2.65	-
<b>CALVING EASE ELITE</b>		

A full brother sold to Rick Toney. The Focal Point – Upward combination has worked extremely well for us.



**WINDY WILLOWS FOCAL POINT 122E**  
**WWHS 122E MARCH 05 2017 #1977509**

**9**

**S: KG FOCAL POINT 2013**

CONNEALY ONWARD  
 SITZ UPWARD 307R  
 SITZ HENRIETTA PRIDE 81M

**D: WWF UPWARD HEROINE 41B**

STEVENSON MONEYMAKER R185  
 MERIT HEROINE 8718  
 MERIT HEROINE 2066

LMY	RIB EYE	%IMF	RIB FAT	RUMP FAT
60.6	12.17	2.36	0.31	0.45

	WTs	EPDs
<b>BW</b>	86	+2.8
<b>WW</b>	608	+54
<b>YW</b>	1197	+98
<b>MILK</b>	-	+24
<b>AGE DAM</b>	3	-
<b>TEST ADG</b>	3.68	-

Here is a long, clean made Focal Point son that is a ¾ brother to the previous lot and to our high selling heifer to Cowtrax in the 2016 sale.



**CONGRATULATIONS TO MCKEVITT'S  
 FINEST ANGUS FOR SHOWING THE  
 CHAMPION PEN OF BRITISH BRED  
 BULLS AT THE 2017 EDAM FALL FAIR.  
 THESE BULLS WERE SIRED BY  
 WINDY WILLOWS FOCAL POINT 6C,  
 PURCHASED OUT OF THE  
 2016 GIT 'R DONE BULL SALE.**





## REFERENCE SIRE



### S A V SEEDSTOCK 4838

(ET) IMP 4838B JANUARY 15 2014 #1890621

BW: 86LBS. ADJ 205 DAY WT: 1175LBS. ADJ 365 DAY WT: 1605LBS.

R R RITO 707  
RITO 707 OF IDEAL 3407 7075  
IDEAL 3407 OF 1418 076  
S: S A V REGISTRY 2831  
S A F 598 BANDO 5175  
S A V MADAME PRIDE 0075  
S A V MADAME PRIDE 8264

SITZ TRAVELER 8180  
S A V 8180 TRAVELER 004  
BOYD FOREVER LADY 8003  
D: S A V BLACKCAP MAY 4136  
S A F 598 BANDO 5175  
S A V MAY 2397  
S A V MAY 7238

BW	WW	YW	MILK	REA	%IMF	FAT
+3.2	+64	+109	+22	+0.74	-0.03	-0.027

Seedstock was the \$275,000 featured high selling bull in the 2015 Schaff Angus Valley Bull Sale. We decided to use him for his stoutness, his big bodied, powerful good looks and for the strength of his outstanding mother, the Blackcap May 4136 cow.



### WINDY WILLOWS SEEDSTOCK 216E

WW 216E MARCH 22 2017 #2010420

S: S A V SEEDSTOCK 4838

SITZ TRAVELER 8180  
S A V FINAL ANSWER 0035  
S A V EMULOUS 8145  
D: WWF FA LUCY 10W  
BAD LANDS AMBUSH 45M  
WWF AMBUSH LUCY 129T  
WWF HERCULES LUCY 150K

LMY	RIB EYE	%IMF	RIB FAT	RUMP FAT
64.5	15.66	3.17	0.27	0.25

	WTs	EPDs
BW	88	+3.3
WW	739	+65
YW	1404	+114
MILK	-	+22
AGE DAM	8	-
TEST ADG	4.16	-

# 10

Seedstock 216E is one of the calves that stuck out all summer long even though he was one of the younger calves out there. He has that strong top, deep middle and clean but masculine front end that sets him apart. He was 2nd high indexing calf in his very large group at weaning and 2nd again as a yearling. In addition, he possesses the largest ribeye of any bull in the sale at 15.66 sq inches. His dam is a big volume, beautifully - uddered Final Answer cow whose only 2 daughters have both been retained in the herd. If you want an attractive bull that is sure to strengthen the maternal side of your cowherd you need to consider this bull.



## WINDY WILLOWS SEEDSTOCK 146E

WW 146E MARCH 09 2017 #2000070

11

S: S A V SEEDSTOCK 4838

NORTHERN VIEW QUANTUM 86P  
NORTHERN VIEW QUANTUM 83W  
WWF AMBUSH BELLE 166P

D: WWF QUANTUM ERICA 95Y

SOUTHERN KRUGGERAND 16H  
WWF KRUGERRAND ERICA 48P  
WWF FORTUNE ERICA 37K

LMY	RIB EYE	%IMF	RIB FAT	RUMP FAT
61.0	13.95	2.95	0.35	0.37

	WTs	EPDs
BW	80	+1.0
WW	579	+44
YW	1222	+81
MILK	-	+22
AGE DAM	6	-
TEST ADG	3.98	-
CALVING EASE		

An attractive bull out of a highly regarded Quantum daughter.  
Yearling index of 116.



## WINDY WILLOWS SEEDSTOCK 156E

WW 156E MARCH 09 2017 #2000006

12

S: S A V SEEDSTOCK 4838

CRESCENT CREEK ALLIANCE 29N  
CRESCENT CREEK IRON MAN 93R  
CRESCENT CREEK DANA 35M

D: WWF IRON POPPY ANN 166U

K C F BENNET COALITION SCC  
WWF COALITION POPPY ANN 78R  
WINDY WILLOWS POPPY ANN 12M

LMY	RIB EYE	%IMF	RIB FAT	RUMP FAT
62.8	15.55	3.54	0.33	0.24

	WTs	EPDs
BW	84	+1.3
WW	606	+52
YW	1210	+92
MILK	-	+25
AGE DAM	9	-
TEST ADG	3.77	-
CALVING EASE		

A deep - ribbed, easy fleshing bull from a daughter of Iron Man who left a set of outstanding cows in the Windy Willows herd. The thickness you can see is real, as ultrasound shows this bull to have the second largest ribeye area in the sale at 15.55 sq inches.



TEAM WINDY WILLOWS SHOWDOWN 2017



## WINDY WILLOWS SEEDSTOCK 159E

WW 159E MARCH 10 2017 #2000009

# 13

S: S A V SEEDSTOCK 4838

WANDERING CRK DYNASTY JRM 2F  
SILVER DOME DYNASTY 19T  
SILVER DOME OAKLEAF 119L

D: LOOKOUT BLACKCAP 74W

LOOKOUT PACESETTER 258M  
LOOKOUT BLACKCAP 123S  
WAVENY BLACKCAP 8L

LMY	RIB EYE	%IMF	RIB FAT	RUMP FAT
61.7	11.97	2.93	0.26	0.45

	WTs	EPDs
<b>BW</b>	94	+4.5
<b>WW</b>	671	+48
<b>YW</b>	1236	+78
<b>MILK</b>	-	+23
<b>AGE DAM</b>	8	-
<b>TEST ADG</b>	3.53	-

The dam of this bull is designated Elite by the Canadian Angus Association. She was selected by David Johnson of JL Livestock in our December Female Production Sale.



## WINDY WILLOWS SEEDSTOCK 173E

WW 173E MARCH 13 2017 #2000017

# 14

S: S A V SEEDSTOCK 4838

CRESCENT CREEK ALLIANCE 29N  
CRESCENT CREEK IRON MAN 93R  
CRESCENT CREEK DANA 35M

D: WWF IRON BLACKBIRD 47T

V F VENTURE FORWARD  
FAIRMOUNT BLACKBIRD 44K  
WWF BANDO BLACKBIRD 18H

LMY	RIB EYE	%IMF	RIB FAT	RUMP FAT
61.6	11.20	3.77	0.24	0.29

	WTs	EPDs
<b>BW</b>	88	+2.3
<b>WW</b>	627	+52
<b>YW</b>	1175	+88
<b>MILK</b>	-	+22
<b>AGE DAM</b>	10	-
<b>TEST ADG</b>	3.43	-
<b>CALVING EASE</b>		

A deep sided bull and a ¾ brother to Lot 12. Blackbird 47T works her heart out every year and always brings in a good one.





## REFERENCE SIRE



## CONNEALY FINAL PRODUCT

IMP 7212T JANUARY 23 2007 #1643843

BW: 73LBS. ADJ 205 DAY WT: 714LBS. ADJ 365 DAY WT: 1367LBS.

G A R PRECISION 1680  
G A R RETAIL PRODUCT  
G A R EXT 4927  
S: CONNEALY PRODUCT 568  
BON VIEW NEW DESIGN 878  
PRIDE FINE OF CONANGA 566  
PRIDE FAN OF CONANGA 6456

LARKS CANYON 74D4  
CONNEALY DEEP CANYON 454  
RONNA OF CONANGA 64452  
D: EBONISTA OF CONANGA 471  
PAPA UNIVERSE 515  
EBONISA OF CONANGA 5469  
EBONY ASY OF CONANGA

BW	WW	YW	MILK	REA	%IMF	FAT
+0.7	+60	+110	+25	+0.56	+0.33	+0.032

Final Product has been widely used in the industry and has established a reputation for producing outstanding daughters that are very attractive in their design and also very productive.



## WINDY WILLOWS F PRODUCT 80E

WW 80E FEBRUARY 26 2017 #1992934

# 15

S: CONNEALY FINAL PRODUCT

CRESCENT CREEK ALLIANCE 29N  
CRESCENT CREEK IRON MAN 93R  
CRESCENT CREEK DANA 35M  
D: WWF IRON LADY SANDY 174T  
SOUTHERN KRUGGERAND 16H  
WWF KRUGERRAND LADY SANDY 139P  
WWF FAMOUS LADY SANDY 70J

LMY	RIB EYE	%IMF	RIB FAT	RUMP FAT
60.1	14.78	3.31	0.41	0.34

	WTs	EPDs
BW	88	+2.5
WW	693	+53
YW	1353	+102
MILK	-	+24
AGE DAM	10	-
TEST ADG	4.13	-

If you need a bull to produce high quality females for your cowherd, this guy could be the answer. Iron Man and Final Product both have been outstanding female producers. Feet and udders are second to none. On top of his classy look this bull was the third highest ranking bull in his group at 365 days of age so he has lots of grow to him as well. The thickness he exhibits is verified by the ultrasound evaluation of his ribeye area at 14.78 sq inches.

## WINDY WILLOWS F PRODUCT 147E

WW 147E: MARCH 09 2017 #2000071

# 16

### S: CONNEALY FINAL PRODUCT

S ALLIANCE 3313  
S CHISUM 6175  
S GLORIA 464

### D: WWF CHISUM BLACKBIRD 33Z

WINDY WILLOWS CINCHA 112R  
WWF CINCHA BLACKBIRD 204T  
WWF ALLIANCE BLACKBIRD 112N

LMY	RIB EYE	%IMF	RIB FAT	RUMP FAT
59.0	14.68	3.22	0.45	0.52

	WTs	EPDs
BW	90	+4.4
WW	676	+62
YW	1313	+114
MILK	-	+23
AGE DAM	5	-
TEST ADG	3.98	-

F Product 147E is an attractive bull with very good performance and a big ribeye just like the previous lot. Blackbird 33Z is an outstanding Chisum daughter. She is the dam of the feature black heifer in last years sale. You will like this bull for his soft made good looks and deep rib.



## WINDY WILLOWS F PRODUCT 59E

WW 59E FEBRUARY 20 2017 #1992916

# 17

### S: CONNEALY FINAL PRODUCT

HIGH VALLEY 4C6 AMBUSH  
BAD LANDS AMBUSH 45M  
BAD LANDS BLACKCLASS 808H

### D: WWF AMBUSH KEEPSAKE 105Z

STEVENSON BRUNO 561G  
WWF BRUNO KEEPSAKE 114N  
WWF FORTUNE KEEPSAKE 19J

LMY	RIB EYE	%IMF	RIB FAT	RUMP FAT
59.9	12.27	3.78	0.34	0.38

	WTs	EPDs
BW	80	+0.3
WW	701	+56
YW	1207	+90
MILK	-	+21
AGE DAM	5	-
TEST ADG	3.16	-
CALVING EASE		

A maternal sister to this bull was a top end selection of Danny and Treena Blake from our December Female Production Sale.



## WINDY WILLOWS F PRODUCT 119E

WW 119E MARCH 04 2017 #2000048

# 18

### S: CONNEALY FINAL PRODUCT

HIGH VALLEY 4C6 AMBUSH  
BAD LANDS AMBUSH 45M  
BAD LANDS BLACKCLASS 808H

### D: WWF AMBUSH ERICA 98T

E&B 1483 SCOTCHMAN 543  
WWF SCOTCHMAN ERICA 90M  
WWF PUCKETT ERICA 70H

LMY	RIB EYE	%IMF	RIB FAT	RUMP FAT
60.4	12.25	3.02	0.32	0.30

	WTs	EPDs
BW	78	+0.1
WW	541	+41
YW	1142	+77
MILK	-	+22
AGE DAM	10	-
TEST ADG	3.75	-
CALVING EASE ELITE		

Here is a deep, soggy bull from one of our good Ambush daughters. Ambush daughters were the cornerstone of our herd a few years back and many of our top cows trace to them.





## WINDY WILLOWS INVESTMENT 104E WW 104E MARCH 02 2017 #2000038

19

CONNEALY PRODUCT 568  
CONNEALY FINAL PRODUCT  
EBONISTA OF CONANGA 471  
S: SITZ INVESTMENT 660Z  
SITZ UPWARD 307R  
SITZ ELLUNAS ELITE 656T  
SITZ ELLUNAS ELITE 35M  
S A V FINAL ANSWER 0035  
S A V PIONEER 7301  
S A V BLACKBIRD 5297  
D: WWF PIONEER BELL 41Y  
WINDY WILLOWS HERCULES 86K  
SPRING VIEW BELL 9M  
BELL BLACKCAP 10C

	WTs	EPDs
BW	84	+1.7
WW	721	+65
YW	1342	+121
MILK	-	+26
AGE DAM	6	-
TEST ADG	3.88	-
CALVING EASE		

LMY	RIB EYE	%IMF	RIB FAT	RUMP FAT
56.3	11.96	4.12	0.47	0.37

Sitz Investment was not widely used in Canada but we were able to obtain some semen and sample him. He is a high selling son of Final Product from the Sitz program and he carries on the Final Product reputation for quality females. Investment 104E posted a weaning index of 116 and a yearling index of 112.

## REFERENCE SIRE



## S A V INTERNATIONAL 2020

IMP 2020Z FEBRUARY 20 2012 #1724665

BW: 83LBS. ADJ 205 DAY WT: 955LBS. ADJ 365 DAY WT: 1553LBS.

CAR DUKE 104  
S A V HERITAGE 6295  
S A V BLACKCAP MAY 4136  
S: S A V HARVESTOR 0338  
S A V NET WORTH 4200  
S A V EMBLYNETTE 7749  
SAV EMBLYNETTE DIAMOND 6377  
SITZ TRAVELER 8180  
S A V 8180 TRAVELER 004  
BOYD FOREVER LADY 8003  
D: S A V EMBLYNETTE 5483  
N BAR EMULATION EXT  
S A V EMBLYNETTE 7260  
S A V EMBLYNETTE APRIL 1509

BW	WW	YW	MILK	REA	%IMF	FAT
+5.6	+71	+117	+22	+0.47	+0.19	+0.050

International has proven to be a great breeding bull as he has sired high performance cattle and show winners with an abundance of muscle wherever he has been used. He sired the popular Windy Willows Intercept 115D, that sold 2/3 interest to Wiwa View Farm last year. Two daughters were first and fourth in the same class at the highly competitive 2017 Showdown Junior show in Lloydminster last summer for Hillary.



## WINDY WILLOWS INTRNATIONAL 93E WW 93E FEBRUARY 28 2017 #1992944

20

S: S A V INTERNATIONAL 2020

CRESCENT CREEK ALLIANCE 29N  
CRESCENT CREEK IRON MAN 93R  
CRESCENT CREEK DANA 35M  
D: WWF IRON EUTHALLA 51T  
WIWA CREEK STOCKMAN 26'95  
WWF STOCKMAN EUTHALLA 127J  
WWF TRENDY EUTHALLA 7F

LMY	RIB EYE	%IMF	RIB FAT	RUMP FAT
63.6	13.58	2.56	0.24	0.36

	WTs	EPDs
BW	95	+4.7
WW	579	+51
YW	1107	+83
MILK	-	+22
AGE DAM	10	-
TEST ADG	3.30	-

Loads of long, wavy hair on this attractive and muscular International son. A maternal brother sold to Corrie Richardson.





WINDY WILLOWS INTRNTIONAL 180E - LOT 21



WWF GAME DAY ERICA 20W - DAM OF LOT 21



KBJ ELLIE 938A - DAM OF LOT 22



WINDY WILLOWS ZORIAN 1E - LOT 22

## WINDY WILLOWS INTRNTIONAL 180E

WW 180E MARCH 14 2017 #2000021

21

S: S A V INTERNATIONAL 2020

BOYD NEW DAY 8005  
GDAR GAME DAY 449  
G D A R MISS WIX 474

D: WWF GAME DAY ERICA 20W

WINDY WILLOWS CINCHA 112R  
WWF CINCHA ERICA 192T  
WWF QUANTUM ERICA 163N

LMY	RIB EYE	%IMF	RIB FAT	RUMP FAT
65.2	14.64	3.97	0.21	0.27

	WTs	EPDs
BW	88	+3.3
WW	678	+59
YW	1241	+100
MILK	-	+23
AGE DAM	8	-
TEST ADG	3.52	-

International 180E may be the best breeding bull prospect in the offering. Study his length of spine, deep ribs, full hips and excellent structure. He has the look of a herdbull! Ultrasound shows that he has a large ribeye and very good marbling, a combination that is rare indeed. He also has the heritage to be a great breeding bull. His dam is none other than WWF Game Day Erica 20W who is the dam of Windy Willows Upload 30B who in turn sired the Ag Ex Champion bull, SMW Knight Shade 55D for Sharon Wagner. She is also the dam of the WWF Upward Erica 35C whose first daughter sold for \$13,000 in the 2016 sale. Erica 20W has now entered our ET program. The story is just beginning and you can be a part of it by putting this bull to work in your program.

## WINDY WILLOWS ZORIAN 1E

WWHS 1E JANUARY 24 2017 #1977501

22

YOUNG DALE KNOCK OUT 134U  
YOUNG DALE XCALIBER 32X  
BROOKMORE TIBBIE 222T

S: YOUNG DALE ZORIAN 106Z

S A V 004 PREDOMINANT 4438  
YOUNG DALE POLLYANNA 78S  
YOUNG DALE POLLYANNA 24P

S A V CARBON COPY 7664  
KBJ BLACK MARLIN 012W  
HF EVENING TINGE 57R

D: KBJ ELLIE 938A

RED KBJ DAYTRIP 1073T  
RED KBJ ELLIE 38W  
KBJ ELLIE 950T

LMY	RIB EYE	%IMF	RIB FAT	RUMP FAT
65.2	13.96	3.03	0.19	0.20

We purchased two cows at the KBJ dispersal bred to the Young Dale Zorian 106Z bull. The Zorian calves were one of the features of that tremendous sale. This bull came from the cow Hillary selected and she is pretty certain she got the best calf. You be the judge!

	WTs	EPDs
BW	94	+3.7
WW	629	+47
YW	1134	+73
MILK	-	+22
AGE DAM	4	-
TEST ADG	3.16	-





WINDY WILLOWS ZORIAN 4E - LOT 23



YOUNG DALE ZORIAN 106Z - SIRE OF LOTS 22 & 23

## WINDY WILLOWS ZORIAN 4E

WW 4E JANUARY 31 2017 #1991614

YOUNG DALE KNOCK OUT 134U  
YOUNG DALE XCALIBER 32X  
BROOKMORE TIBBIE 222T  
S: YOUNG DALE ZORIAN 106Z  
S A V 004 PREDOMINANT 4438  
YOUNG DALE POLLYANNA 78S  
YOUNG DALE POLLYANNA 24P

HF KODIAK 5R  
GEIS BALOO 13'08  
KBJ QUEEN 461L  
D: KBJ ELOQUENT LADY 92A  
LEACHMAN RIGHT TIME  
KBJ ELOQUENT LADY 33W  
EASTONDALE ELOQUENT LADY 02'07

LMY	RIB EYE	%IMF	RIB FAT	RUMP FAT
63.7	13.44	2.52	0.23	0.32

	WTs	EPDs
BW	86	+3.2
WW	733	+54
YW	1187	+75
MILK	-	+18
AGE DAM	4	-
TEST ADG	2.84	-

These Zorian calves exhibited a lot of muscle and masculinity from an early age. The dam of this bull was Collin's selection. We liked both bulls well enough that we obtained some semen and used him ourselves this year.

## WINDY WILLOWS YOHAN 86E

WW 86E FEBRUARY 26 2017 #2015073

YOUNG DALE YOHANN 39Y  
YOUNG DALE YOHAN 133A  
YOUNG DALE LADY SANDRA 112W  
S: YOUNG DALE YOHAN 38C  
YOUNG DALE BAZAAR 16W  
YOUNG DALE GRACE 151Z  
YOUNG DALE GRACE 69R

RA LINCOLN W144  
S TITLEST 1145  
S CORA 572 DDF  
D: WWF TITLEST BARBARA 38C  
S A V FINAL ANSWER 0035  
WWF FA BARBARA 70X  
WWF MN STREET BARBARA 81U

LMY	RIB EYE	%IMF	RIB FAT	RUMP FAT
64.4	13.96	2.42	0.22	0.25

Young Dale Yohan 38C was the lead off bull in the 2016 Young Dale bull sale. You may remember him as the bull that Robb featured in many of his Facebook posts. Yohan has a pronounced muscle pattern and certainly passes it on to his sons. Yohan 86E is a great example of that.



WINDY WILLOWS YOHAN 231E - LOT 25

24

	WTs	EPDs
BW	82	+1.6
WW	683	+62
YW	1255	+103
MILK	-	+17
AGE DAM	2	-
TEST ADG	3.57	-
CALVING EASE		



WINDY WILLOWS YOHAN 86E - LOT 24

## WINDY WILLOWS YOHAN 231E

WW 231E MARCH 25 2017 #2010428

YOUNG DALE YOHANN 39Y  
YOUNG DALE YOHAN 133A  
YOUNG DALE LADY SANDRA 112W  
S: YOUNG DALE YOHAN 38C  
YOUNG DALE BAZAAR 16W  
YOUNG DALE GRACE 151Z  
YOUNG DALE GRACE 69R

MINBURN MAIN EVENT 181N  
MINBURN MAIN STREET 146S  
MINBURN KEEPSAKE 16J  
D: WWF MAIN STREET LUCY 22B  
BAD LANDS AMBUSH 45M  
WWF AMBUSH LUCY 212T  
WWF HERCULES LUCY 108L

LMY	RIB EYE	%IMF	RIB FAT	RUMP FAT
59.1	12.92	2.93	0.39	0.40

	WTs	EPDs
BW	84	+3.8
WW	659	+54
YW	1268	+93
MILK	-	+18
AGE DAM	3	-
TEST ADG	3.80	-

Note the circular mark on the side of this bull's crest. It is a birth mark, often called a Jock mark because the oldest bull in the breed named Old Jock had one. His calves are very unlikely to have one but they will inherit his growth and muscling!

25

**WINDY WILLOWS GAME DAY 240E**  
**WW 240E MARCH 27 2017 #2010435**

**26**

BOYD NEW DAY 8005  
 GDAR GAME DAY 449  
 G D A R MISS WIX 474  
**S: EARLY SUNSET GAME DAY 30C**  
 EARLY SUNSET TOMMY BOY 8W  
 EARLY SUNSET LADY ANN 92Y  
 EARLY SUNSET LADY ANN 112W

N BAR EMULATION EXT  
 LEACHMAN RIGHT TIME  
 LEACHMAN ERICA 0025  
**D: WWF RIGHT TIME JACKIE 52Y**  
 SITZ ALLIANCE 6595  
 TLA JACKIE 12L  
 DIAMOND RIVER JACKIE 75C

	WTs	EPDs
<b>BW</b>	92	+2.9
<b>WW</b>	636	+45
<b>YW</b>	1120	+74
<b>MILK</b>	-	+24
<b>AGE of DAM</b>	6	-
<b>TEST ADG</b>	3.02	-

LMY	RIB EYE	%IMF	RIB FAT	RUMP FAT
60.1	13.20	3.69	0.36	0.34

Here is the only son of the Game Day bull we purchased from Jim Grant on offer. His dam is an own daughter of Leachman Right Time who was the dam of Unlimited 205D, the Lot 1 feature bull last year that sold to Will & Holly Hollingshead.



**WINDY WILLOWS UNANIMOUS 141E**  
**LOT 27**



**WWF RIGHT TIME BLACKBIRD E 102**  
**DAM OF LOT 27**



**WINDY WILLOWS UNANIMOUS 141E**  
**WW 141E MARCH 08 2017 #2000065**

**27**

GAMBLES ROYAL FLUSH  
 VISIONTOPLINE ROYAL STOCKMAN  
 LAGRAN PRIDE 7140  
**S: VISION UNANIMOUS 1418**  
 BOYD ON TARGET 1083  
 VISION EDELLA 665  
 VISION EDELLA 337  
 LEACHMAN RIGHT TIME  
 BAD LANDS RIGHT TIME 78N  
 BAD LANDS DUCHESS 809H  
**D: WWF RIGHT TIME BLACKBIRD E 102**  
 S A F FOCUS OF E R  
 WWF FOCUS BLACKBIRD E 21L  
 WWF CORNHUSKER BLACKBIRD E 36C

	WTs	EPDs
<b>BW</b>	96	+4.3
<b>WW</b>	586	+55
<b>YW</b>	1208	+98
<b>MILK</b>	-	+20
<b>AGE of DAM</b>	8	-
<b>TEST ADG</b>	3.89	-

LMY	RIB EYE	%IMF	RIB FAT	RUMP FAT
61.8	12.42	3.44	0.27	0.33

Vision Unanimous is a high performance bull that will improve feet. A maternal sister sold to Northern View Angus through the Frontline Sale.



**WINDY WILLOWS UNANIMOUS 187E**  
**LOT 28**



**VISION UNANIMOUS 1418 - SIRE LOTS 27 & 28**

**WINDY WILLOWS UNANIMOUS 187E**  
**WW 187E MARCH 15 2017 #2000027**

**28**

GAMBLES ROYAL FLUSH  
 VISIONTOPLINE ROYAL STOCKMAN  
 LAGRAN PRIDE 7140  
**S: VISION UNANIMOUS 1418**  
 BOYD ON TARGET 1083  
 VISION EDELLA 665  
 VISION EDELLA 337  
 K C F BENNET COALITION  
 WINDY WILLOWS COALITION 106S  
 WWF EXECUTIVE BELL 63G  
**D: WINDY WILLOWS POPPY ANN 339U**  
 MFA STOCKMAN 87G  
 WINDY WILLOWS POPPY ANN 256M  
 WWF STOCKMAN POPPY ANN 76J

	WTs	EPDs
<b>BW</b>	80	+0.5
<b>WW</b>	638	+45
<b>YW</b>	1172	+74
<b>MILK</b>	-	+18
<b>AGE of DAM</b>	9	-
<b>TEST ADG</b>	3.34	-

LMY	RIB EYE	%IMF	RIB FAT	RUMP FAT
62.2	12.23	2.35	0.25	0.34

**CALVING EASE ELITE**

An attractive Unanimous son with a low birth weight EPD.



**WINDY WILLOWS MERRITT 90E**  
**WW 90E FEBRUARY 28 2017 #1992941**

**29**

FELTONS MEAT PACKER 62  
 CONNEALY PACKER 547  
 BESTELLE OF CONANGA 539  
**S: CCC MERRITT 030**  
 VERMILLION 7078 DATELINE L189  
 MVCC GAR BANDO 1240  
 M V C C GAR BANDO 815  
  
 CRESCENT CREEK ALLIANCE 29N  
 CRESCENT CREEK TROUBADOUR 34U  
 CRESCENT CREEK DUCHESS 51M  
**D: WWF TROUBADOUR KEEPSAKE 142Y**  
 STEVENSON BRUNO 561G  
 WWF BRUNO KEEPSAKE 114N  
 WWF FORTUNE KEEPSAKE 19J

	WTs	EPDs
<b>BW</b>	99	+5.8
<b>WW</b>	672	+58
<b>YW</b>	1155	+96
<b>MILK</b>	-	+27
<b>AGE DAM</b>	6	-
<b>TEST ADG</b>	3.02	-

LMY	RIB EYE	%IMF	RIB FAT	RUMP FAT
62.4	14.99	2.20	0.33	0.23

Merritt 90E is one of the unique bulls in the offering. He is a tank with a top wide enough you could set a full course meal dinner setting on it! As one might expect he scanned an impressive 14.99 sq inch ribeye area. He is also one of the very best haired bulls you will find. His maternal brother was a selection of Nicole Booth's from Dusty Breeze Farm in New Brunswick last year. If you are needing a bull to add some power, bigger tops and lots of hair to your calves, this is the bull for you.



**WINDY WILLOWS MERRITT 78E - LOT 30**



**WINDY WILLOWS MERRITT 140E - LOT 31**



**WINDY WILLOWS MERRITT 90E - LOT 29**

**WINDY WILLOWS MERRITT 78E**  
**WW 78E FEBRUARY 25 2017 #1992932**

**30**

FELTONS MEAT PACKER 62  
 CONNEALY PACKER 547  
 BESTELLE OF CONANGA 539  
**S: CCC MERRITT 030**  
 VERMILLION 7078 DATELINE L189  
 MVCC GAR BANDO 1240  
 M V C C GAR BANDO 815  
  
 MINBURN MAIN EVENT 181N  
 MINBURN MAIN STREET 146S  
 MINBURN KEEPSAKE 16J  
**D: WWF MN STREET LADY 5U**  
 GLENCROFT WALLACE 1K  
 WWF SCOTCH LADY 124N  
 WWF PUCKETT LADY 243J

	WTs	EPDs
<b>BW</b>	78	+3.0
<b>WW</b>	668	+46
<b>YW</b>	1264	+92
<b>MILK</b>	-	+29
<b>AGE DAM</b>	9	-
<b>TEST ADG</b>	3.73	-

LMY	RIB EYE	%IMF	RIB FAT	RUMP FAT
58.1	13.85	3.04	0.46	0.51

There is awesome maternal power in this bull. His dam, 5U has an average weaning index of 112 on 7 calves and her udder is standing up real well!

**WINDY WILLOWS MERRITT 140E**  
**WW 140E MARCH 08 2017 #2000064**

**31**

FELTONS MEAT PACKER 62  
 CONNEALY PACKER 547  
 BESTELLE OF CONANGA 539  
**S: CCC MERRITT 030**  
 VERMILLION 7078 DATELINE L189  
 MVCC GAR BANDO 1240  
 M V C C GAR BANDO 815  
 CAR DUKE 104  
 S A V HERITAGE 6295  
 S A V BLACKCAP MAY 4136  
**D: WWF HERITAGE JENNIFER 75W**  
 VERMILION DATELINE 7078  
 WWF VRD JENNIFER 31N  
 WWF VENTURE JENNIFER 34J

	WTs	EPDs
<b>BW</b>	96	+6.6
<b>WW</b>	725	+72
<b>YW</b>	1224	+120
<b>MILK</b>	-	+25
<b>AGE DAM</b>	11	-
<b>TEST ADG</b>	3.12	-

LMY	RIB EYE	%IMF	RIB FAT	RUMP FAT
60.8	13.34	3.21	0.34	0.28

Here is a big rugged and attractive Merritt son that you will like. His dam is one of our highly regarded Jennifer cows and then granddam, 31N has been designated Elite.