

11TH ANNUAL WINDY WILLOWS BULL & FEMALE SALE

GIT "R DONE

TUESDAY APRIL 1, 2014 ♦ 1:00 PM
WINDY WILLOWS FARMS, HODGEVILLE, SK
(16 MILES SOUTH OF HWY #1 ON HWY #19)



LOT 15



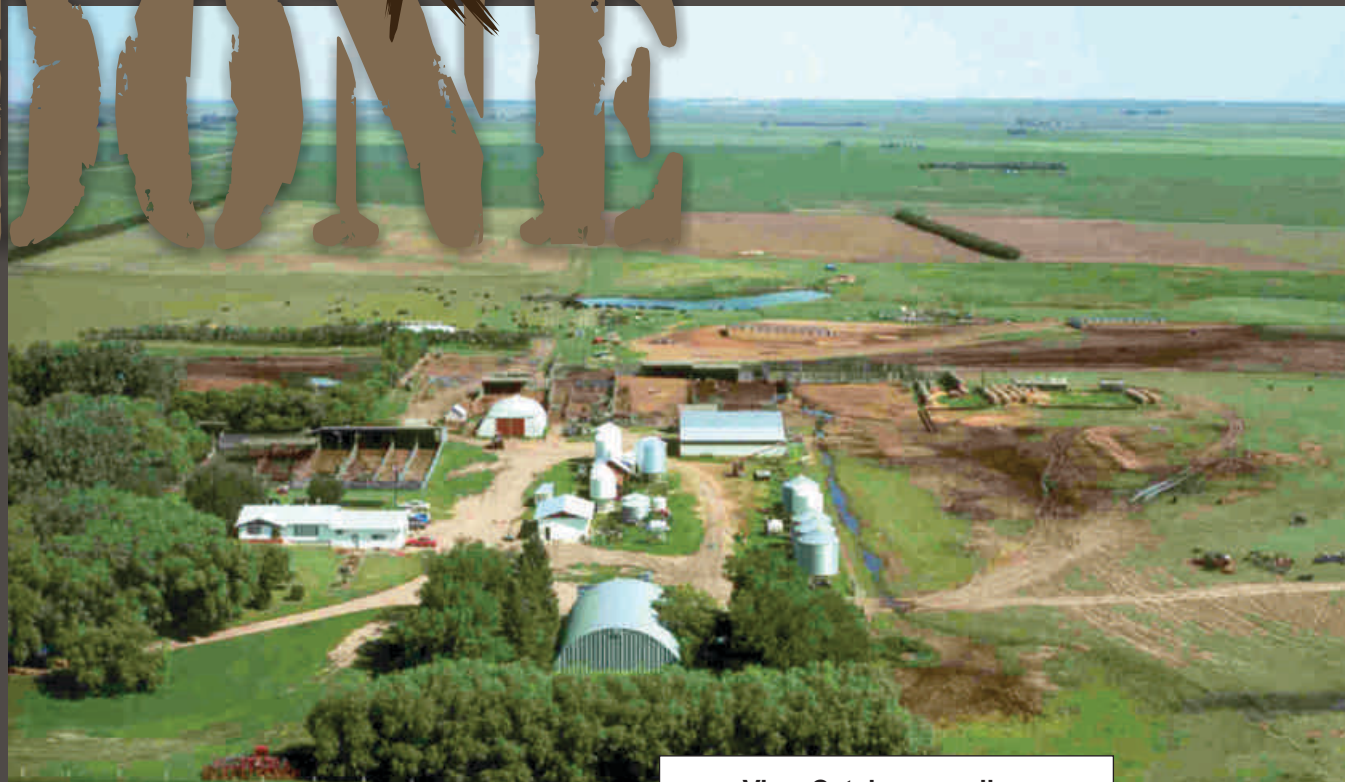
LOT 37

FOLLOWED BY
THE CEDARLEA CHAROLAIS GIT "R DONE BULL SALE

GRAND DON'T

WINDY WILLOWS BULL & FEMALE SALE

TUESDAY APRIL 1, 2014 ♦ 1:00 PM
WINDY WILLOWS FARMS, HODGEVILLE, SK
(16 MILES SOUTH OF HWY #1 ON HWY #19)



Join us for complimentary
"Beef Barbecue Lunch"
Last Year's Reviews Were Great!

View Catalogue online:
www.optimalbovines.com
www.cattlemanagement.ca
www.windywillows.ca

OFFERING: 70 LOTS

- 54 Black Angus Yearling Bulls
- 7 Red Angus Yearling Bulls
- 1 Two Year Old Red Bull
- 8 Black Angus Open Heifers



VIDEO OF SALE BULLS
ON CATTLE IN MOTION
www.cattleinmotion.com
www.windywillows.ca



OPTIMAL BOVINES INC.

Rob Holowaychuk
#407, 4808 Ross St.
Red Deer, AB T4N 1X5
Ph: (403) 341-5098
Fax: (403) 343-6133
Bob Toner: (306) 834-7385
Kirk Hurlburt: (306) 222-8210
Luc Noiseux: (450) 379-9989
email: o.b.i@shaw.ca
www.cattlemanagement.ca
www.optimalbovines.com

You Won't Know - If You Don't Go!

Auctioneer: Steve Dorran(760) 972-7736
Ringmen:
Mark Stock(306) 678-4811
Craig Flewelling(403) 556-0515
Accommodations:
Hodgeville Hub (Inn)(306) 677-1200
Super 8, Swift Current(306) 778-6088
Insurance: Earl Haubrich, EMTA Agencies(306) 677-2207

sale managed by:



SALE DAY PHONES: COLLIN'S CELL: (306) 677-7544
ROB'S CELL: (780) 916-2628 • BOB'S CELL: (306) 834-7385

THE WINDY WILLOWS PROGRAM

Useful information: It is our goal to provide you with information that will help you make accurate bull selection decisions, whatever the traits you are interested in.

Calving Ease:	birth wts, EPDs and CE & CE Elite designations
Growth:	adjusted wts, EPDs and current wts.
Maternal:	Milk EPDs
Carcass:	ultrasound ribeye area, fat thickness and marbling
Fertility:	scrotal circumferences and breeding soundness exam

Current weights and scrotal circumferences will be available sale day or call us!
We'd be happy to show you the dams of the bulls selling; just ask us!

Calving Ease and Birth Weight: Our breeding program has emphasized reasonable birth weights and the average birth weight of our calves has decreased markedly in recent years. Our cows and heifers calve without problems. In 2013 we calved 54 heifers and assisted none of them and at time of this writing we have not assisted a heifer in 2014.

Bull Development: All of our bulls are grown on grass and mother's milk prior to weaning. They receive no creep feed! After weaning the bulls from both herds are fed together in a large pen and developed on a high protein cereal silage and alfalfa hay ration with mineral/vitamin fortified 14% pellets and rolled barley. This enables the bulls to express their growth potential without excessive fattening.

Customer Service: We would be pleased to assist customers with their bull selections, just ask us! Remember too, we offer **free delivery** within 200 miles or **save \$50 if you pick up your bull on sale day**. We stand behind our bulls 100%. We have confidence in our bulls, but if you have a problem, call us, we want to help!

Sale Eligibility: Only the best bulls sell. Each bull must meet our expectations before he can meet yours guaranteed!

Affordable: Real good bulls at prices you can live with; you get exceptional value from our bulls!

NEW THIS YEAR!!

**WE ARE OFFERING A VOLUME DISCOUNT FOR 5 OR MORE BULLS, BLACK, RED OR WHITE.
THE DISCOUNT IS 5% FOR 5 BULLS, 6% FOR 6 BULLS AND SO ON, UP TO 10% FOR 10 OR MORE BULLS.**

WELCOME TO THE 11TH ANNUAL WINDY WILLOWS & GUEST BULL & FEMALE SALE

Welcome to the 11th Annual Windy Willows Bull & Female Sale. The program that presents accurate performance data which translates into meaningful EPD's. A tool that we certainly can use with a high degree of accuracy.

The WWF program is not highly managed but well enough that the animals can express their genetic potential. WWF stress that their animals excel in all performance traits and lead by CE and low BW. As well serious no trouble maternal genetics that will work at WWF but also for their customers.

The bloodlines are current and many are highly predictable such as SAV Final Answer who could well have become the most influential bull of the times. Kodiak, Main Event, Bismarck and Upward contribute a great deal of influence into this year's bull and female offering.

Personal attention to this family operated farm give it the backbone that continues from year to year. Collin & Michelle are the seniors but the junior division has become extremely interested and active. Way to go Hillary and good luck with your cattle projects.

If your needs are buying a sound, good performing, active bull then WWF should be your destination. Not highly developed with the buyer in mind; that's what WWF is all about.

As we draw near to the sale date, your interest is welcomed. Please contact any of the sales staff or Collin & Michelle for further information and help in making your selections.

Rob Holowaychuk, OBI

CARCASS DATA

In order to use body composition EPD's or ultrasound data to its full potential, a breeder must have an understanding of the ultrasound terminology. Several of the ultrasound measurements are comparable to the familiar carcass measurements. The data is simply collected on yearling bulls and heifers instead of market ready steers. Take a step back from looking at the numbers and become comfortable with the terminology.

ULTRASOUND CARCASS MEASUREMENTS

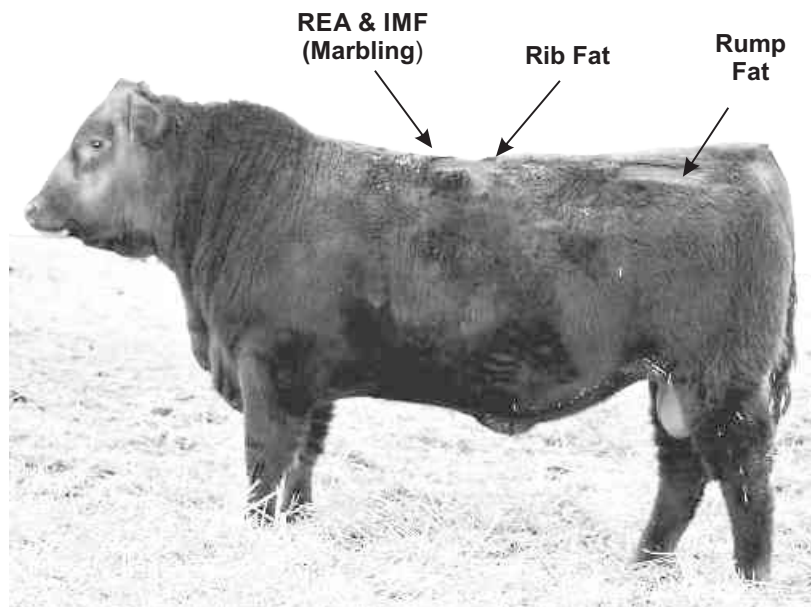
Rib Fat/Backfat: An external fat measurement taken between the 12th and 13th Reported in inches. Rib fat is the main trait that affects percent lean meat yield ie; A1, A2, A3, & A4. Percent lean meat yield is the calculation that estimates the percent of lean muscle on the carcass. For example, a lean meat yield of 60% on a 1000lb carcass would have 600lbs of lean muscle and 400lbs of bone and fat.

Ribeye Area (REA): An area measurement of the loin or ribeye muscle. Reported in square inches. While an increase in backfat will lower the percent lean meat yield an increase in REA will raise the percent lean meat yield.

Rump Fat: An external fat measurement taken from an image collected between the hooks and the pins of the animal. Reported in inches. The rump fat measurement, coupled with the rib fat measurement will increase the accuracy of percent lean meat yield.

Intramuscular Fat (%IMF)/ Marbling:

This measurement determines the amount of fat within the muscle. Reported in "%", it is used to determine the quality grade of the carcass. As %IMF increases so does juiciness, flavor, and tenderness, all factors affecting eating quality.



% IMF	(US) QUALITY GRADE (CAN)	
2.3 - 3.0	SELECT -	AA -
3.1 - 3.9	SELECT +	AA +
4.0 - 5.7	CHOICE -	AAA -
5.8 - 7.6	CHOICE 0	AAA 0
7.7 - 9.7	CHOICE +	AAA +
9.8 - 12.1	PRIME -	PRIME -
12.2 +	PRIME 0	PRIME 0

USING ULTRASOUND DATA TO SELECT BULLS

1. Fat levels, including marbling, will normally be higher in steers than in similarly fed bulls due to the lack of testosterone.
2. Carcass traits such as ribeye area (REA) and marbling (%IMF) are highly heritable, therefore using sires with high ultrasound scores for these traits will significantly improve carcass quality.
3. Significant premiums are being paid by packers for carcasses that meet high quality grade and yield grade standards. There are extra profits to be made!
4. Less backfat is not always better! Extremely low backfat bulls may sire steers with high yield grades, but they may be slow to finish. Their heifer counterparts may reach puberty later and have more difficulty milking, rebreeding and maintaining a short calving interval. On the other hand, overfat bulls may have reduced fertility.
5. Evaluate your cowherd, decide what kind of progeny you wish to produce and choose bulls with the ultrasound data to match your needs.

WHAT THE NUMBERS MEAN!

Windy Willows Farms have been performance testing our herd on the Canadian Angus Performance Program (CAP) since its inception.. We use the information within our own herd and we pride ourselves in providing useful performance information to you so that you can use it to help select the bull or bulls that best suit your operation. We do understand, however, that all these numbers can be mind boggling. This page will try to make some sense of the performance information that is provided in this catalog so that you may use it more effectively.

GROWTH TRAITS

Birth Weight (BW) – the actual weight of the calf taken within 24 hours of birth, not a guess and not a taped estimate.

Calving Ease (CE) – describes the type of birth. Codes used are: U – unassisted, E – easy pull, H – hard pull, M – malpresentation and S – surgical.

Age of Dam (AOD) – age of dam at time of calving. Two year olds, 3 year olds and very old cows tend to have lighter calves at birth.

Weaning Weight (WW) or (Adjusted 205 Day Wt) - the weight taken at weaning and adjusted to 205 days of age, also adjusted for the age of dam.

Weaning Index or Adjusted 205 Day Index – a means of comparing an individual bull's weaning weight to the average weaning weight of his group. Weaning weights and indexes are only comparable within the herd of origin, not between herds.

Yearling Weight (YW) – the weight taken at end of test and adjusted to 365 days of age.

Average Daily Gain (ADG) – the average daily gain while on 112 day gain test. The gain test begins after a 28 day adjustment period to allow bulls from the 4 different herds to adapt to a common environment at the feedlot.

ADG Index – a means of comparing an individual bull's ADG to the average of his group. It is expressed as a percentage of the group ADG.

Weight Per Day of Age (WPDA) – the weight of a bull at end of test divided by his age in days.

WPDA Index - a means of relating an individual bull's WPDA to the average of his group. It is expressed as a percentage of the group WPDA.

What is an EPD? (Expected Progeny Difference) – An EPD is a measure of differences in a trait that will be expected from progeny of different sires. EPDs are expressed in pounds plus (+) or minus (-) a zero standard.

Why are EPDs valuable as a selection tool? – EPDs can be used to compare bulls in different herds within the same breed. They are based on an individual's performance as well as that of his relatives and progeny. They factor out the management and environmental differences that may exist between herds.

Accuracy (Acc) – the more information that is used to calculate an EPD, the more reliable it is. Accuracies are expressed as a number between 0 and 1. The closer the accuracy is to 1, the greater the probability that the EPD will not change with the addition of more information.

BW EPD - the difference in birth weight you would expect between a bull's calves and calves from a bull with a BW EPD of 0. It is a much more accurate indication of expected progeny birth weight than the bull's own BW. All the Black bulls designated as Calving Ease in this catalog have BW EPDs of +3.0 or less. Black bulls designated as Calving Ease Elite have BW EPDs below +1.0.

WW EPD – the difference in weaning weight you would expect between a bull's calves and calves from a bull with a WW EPD of 0. Bulls with higher WW EPDs will sire heavier calves at weaning.

YW EPD – the difference in yearling weight you would expect between a bull's calves and calves from a bull with a YW EPD of 0. Bulls with higher YW EPDs will sire heavier calves at yearling age.

MILK EPD – the difference in weaning weight attributable to milking ability you would expect from a bull's daughters' progeny and progeny of daughters of a bull with a MILK EPD of 0. Bulls with higher MILK EPDs will sire daughters that will have heavier calves at weaning due to their milking ability.

Average EPD - It is helpful to know the average EPD for all calves born in 2013.

	BW	WW	YW	MILK
2013 Black average	+2.7	+43	+75	+19
2013 Red average	-0.6	+47	+73	+16

It is important to note that Black and Red EPDs cannot be directly compared.

Percentile – a ranking of a bull within the population by percentage. It is helpful to know where a bull ranks in the population for a particular trait.

BULL WARRANTY

We guarantee to provide you with a sound, fertile bull capable of servicing a reasonable number of cows. In the event that your bull is a non-satisfactory breeder the seller will not, under any circumstances, be responsible for more than the original selling price of any bull or female sold in the sale. The consignors will not provide replacement or credit for physical injury or mismanagement. Therefore we stress the importance of insurance on your bull. An insurance agent will be available on sale day.

WINDY WILLOWS RESERVES THE RIGHT TO DRAW SEMEN FOR IN-HERD USE ON ANY BULL IN THE SALE, AT THE BUYER'S CONVENIENCE AND OUR EXPENSE.

CALVING EASE & CALVING EASE ELITE BULLS

In order to assist you in your selections, we have designated some of the bulls as Calving Ease or Calving Ease Elite based primarily on their BW EPD.

Calving Ease: These bulls generally have BW EPDs below the breed average, +2.7 for Black bulls and 0 for Red bulls

Calving Ease Elite: These bulls generally have BW EPDs below +1 for Black bulls and below -2 for Red bulls. Most of these bulls represent at least two generations of calving ease sires.

These designations are general guidelines and only you can decide which bulls are appropriate for your situation.



SOUTH WEST ANIMAL HEALTH CENTRE PC (2013) LTD.

P.O. Box 640, Swift Current, SK S9H 3W7 Canada
 Phone: (306) 773-4121 (24 Hours) Fax: (306) 773-1811
 Email: swahc@t2.net
 Located on No. 1 Highway West of Swift Current.

Windy Willows Angus has been a client with the South West Animal Health Centre for a long time. They are on an extensive herd health program that stays current with preventative medicine protocols including vaccination, deworming, and nutrition.

The breeding herd is on a modified live viral protocol which protects against BVDV (Type I and II), BRSV, PI3, and IBR. Calves are vaccinated in spring, fall, and again the following spring as yearlings with the similar modified live product as well as Clostridial, H. somnus, and M. hemolytica to insure the highest health status possible.

These protocols are essential in providing their clients with healthy replacements that are at minimal risk of becoming sick or transmitting disease. The breeding herd protocol guarantees that there are no persistently infected BVDV animals born at this ranch.

All cattle receive an ivermectin pour-on in the fall. The calves are weaned in October and are fed a balanced ration to allow them to grow to their genetic potential.

All bulls are semen tested and only the satisfactory potential breeders sell in their sale with the non-testers supplying a freezer beef clientele.

Best of luck with your purchase(s).

Glen Griffin DVM

**HELP US
MAKE A
DIFFERENCE!**

CHILDREN'S HOSPITAL FOUNDATION OF SASKATCHEWAN and STARS FUNDRAISER

Our family is growing up and we sometimes think about how fortunate we have been that none of our family has required emergency treatment or extended hospitalization. We live in a rural community in a largely rural province and nobody knows when we, or someone dear to us, will require these services. For this reason we would like to ask that you help us raise much needed funds for these two very worthwhile causes. We will donate the proceeds from the sale of one purebred Angus heifer to The Children's Hospital Foundation of Saskatchewan and STARS (Shock Trauma Air Rescue Service). Details will be announced at the sale.

CAN'T MAKE IT TO THE SALE?

If you just can't make it to the sale because of weather, calving, prior commitments or whatever, please call us! Collin or any of the sale staff would be happy to discuss the offering with you. We encourage you to plan a trip to the farm to see the bulls and their dams, prior to the sale. We would welcome the opportunity to visit with you about which bulls will meet your needs. On sale day we can make arrangements to have you bid by phone or we would be pleased to personally represent you. We guarantee satisfaction! In the event that the bull purchased for you does not meet your expectations upon delivery, you do not own him!



WINDY WILLOWS FARMS

Collin Sauder & Michelle Potapinski

Box 55, Hodgeville, SK, S0H 2B0 • (306) 677-2507 • Cell: (306) 677-7544

Email: windy.willows@sasktel.net • www.windywillows.ca

Welcome to the 11th Annual Git 'R Done Bull and Female Sale

We would like to welcome all our friends, neighbours and customers, old and new, to our 11th Anniversary Sale!

We are very pleased with the bulls on offer this year. Once again we have an outstanding set of Upward sons, the powerful Main Street sons and the ever popular calving ease bulls by Final Answer. You will also find progeny by Cedar Ridge, Bismarck and our own Kodiak 1W and Boomer. The red division includes sons of Gladiator, Red WWF Ambush and Dynamo.

The bulls were weaned in early October without creep. Their ration consists primarily of barley silage, chopped alfalfa; mineral and vitamin fortified 14% pellets and rolled barley. The average daily gain up to Feb 19 was 3.14 lbs /day.

We aim to provide our customers with the best service available and we stand behind our bulls 100%. If you should have a problem, we want to be the first to know so that we can deal with it.

Once again we are offering a selection of purebred yearling heifers from the heart of our herd, which include daughters of most of our major herd sires.

Our friends and neighbours, Garner & Lori Deobald and family from Cedarlea Farms will be joining us with another set of strong yearling Charolais bulls. They share our commitment to the beef industry and to the success of their customers and we look forward to working with them again.

Please plan to join us on Tuesday, April 1. See you then!

Collin, Michelle & Hillary



Michelle, Collin & Hillary

BLACK ANGUS BULLS

REFERENCE SIRE

SITZ UPWARD 307R

IMP 307R MARCH 12 2005 #1385926

BW: 85LBS. ADJ 205 DAY WT: 902LBS

ADJ 365 DAY WT: 1395LBS.

CONNEALY LEADTIME
CONNEALY LEAD ON
ELIGENCE PLUS OF CONANGA

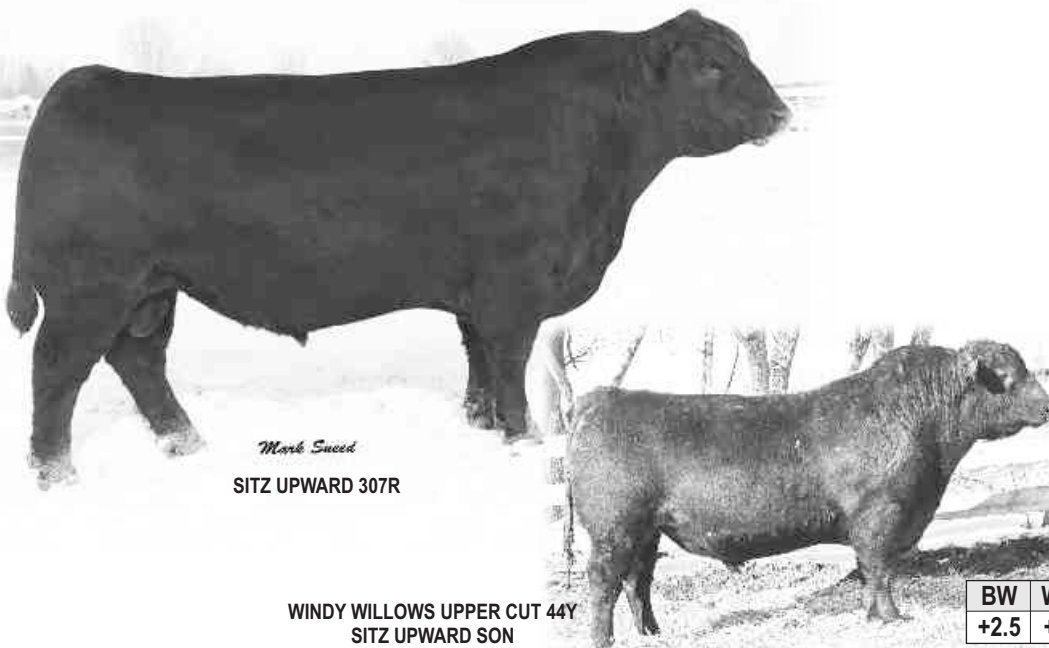
S: CONNEALY ONWARD

G A R TRAVELER 1489
ALTUNE OF CONANGA 6104
AVALON 1418 OF CONANGA 6276

SITZ TRAVELER 6802
SITZ VALUE 7097
SITZ EISA EVERGREEN 791

D: SITZ HENRIETTA PRIDE 81M

O C C GREAT PLAINS 943G
SITZ HENRIETTA PRIDE 1370
SITZ HENRIETTA PRIDE 2155



WINDY WILLOWS UPPER CUT 44Y
SITZ UPWARD SON

BW	WW	YW	MILK	REA	%IMF	FAT
+2.5	+70	+132	+42	+0.72	+0.39	-0.017

Upward has quickly become one of the most popular bulls of the breed. He is unmatched for weaning and yearling growth with moderate birth weights. His daughters' milking ability and his carcass genetics are a bonus not usually found in a high growth bull. His calves at WWF, both bulls and heifers, exhibit his performance and eye appeal. His sons in past sales have been extremely popular and include Windy Willows Upper Cut 44Y, a high seller to Dennis Johnston and Fertile Valley that is now in heavy service at Windy Willows.



WINDY WILLOWS UPWARD 58A **WW 58A FEBRUARY 25 2013 #1747553**

1

S: SITZ UPWARD 307R

HIGH VALLEY 4C6 AMBUSH
 BAD LANDS AMBUSH 45M
 BAD LANDS BLACKLASS 808H
D: WWF AMBUSH ROSEGAY 122S
 WIWA CREEK STOCKMAN 26'95
 WWF STOCKMAN ROSEGAY 141L
 WWF BANDO ROSEGAY 32G

LMY	RIB EYE	%IMF	RIB FAT	RUMP FAT
61.7	11.88	4.97	0.26	0.31

	WTs	EPDs
BW	90	+3.6
WW	689	+59
YW	1264	+107
MILK	-	+28
AGE DAM	7	-
TEST ADG	3.59	-

FEATURE: Upward 58A is a full brother to Upward 82Y another bull purchased by Dennis Johnston and Fertile Valley for use in their program. Like his brother, Upward 58A has been a standout all summer and has really poured it on since going on feed. He posted a weaning index of 112 and a yearling index of 114, 3rd out of 60 bulls. His dam, Rosegay 122S is fast becoming one of the stalwart producers in the WWF herd with every son produced so far, serving herd sire duties in top purebred or commercial herds. Check him out. Here is a herd bull in the making.

WINDY WILLOWS UPWARD 74A **WW 74A MARCH 01 2013 #1747568**

2

S: SITZ UPWARD 307R

LEACHMAN RIGHT TIME
 BAD LANDS RIGHT TIME 78N
 BAD LANDS DUCHESS 809H
D: WWF RIGHT TIME BARBARA 42T
 SOUTHERN KRUGGERAND 16H
 WWF KRUGERRAND BARBARA 144P
 WWF FORTUNE BARBARA 29K

LMY	RIB EYE	%IMF	RIB FAT	RUMP FAT
65.1	12.65	3.01	0.15	0.17

	WTs	EPDs
BW	82	+1.9
WW	625	+59
YW	1230	+108
MILK	-	+32
AGE DAM	6	-
TEST ADG	3.78	-
CALVING EASE		

FEATURE: Upward 74A is an eye-ful to say the least. He is long, deep, big bodied and possesses a thick mossy hair coat. He has exceptional performance posting a 120 yearling index, 1st out of 60 bulls. His dam is a big bodied, good uddered daughter of our Right Time bull whose daughters are having an impact in both our herd and Johnson Livestock where several daughters came in dam. If you are looking for a powerful bull that will add performance and do-ability to his calves, here he is!

WINDY WILLOWS UPWARD 34A **WW 34A FEBRUARY 17 2013 #1747533**

3

S: SITZ UPWARD 307R

EMULATION N BAR 5522
 N BAR EMULATION EXT
 N BAR PRIMROSE 2424
D: WWF EXT BLACKBIRD 31K
 CENTURY TOUCHSTONE 131
 WWF TOUCHSTONE BLACKBIRD 79E
 WWF VAL EBARD 55B

LMY	RIB EYE	%IMF	RIB FAT	RUMP FAT
65.4	12.66	4.81	0.14	0.23

	WTs	EPDs
BW	82	+2.2
WW	528	+48
YW	1122	+94
MILK	-	+26
AGE DAM	13	-
TEST ADG	3.71	-
CALVING EASE		

Upward 34A is the third highest gaining bull on feed and the 2nd highest indexing bull as a yearling with an index of 118. His EXT sired dam is 14 years old now and has sons working for Stormy Valley, Craig Williams and Cam Campbell.



WINDY WILLOWS
UPWARD 44A
LOT 4

WINDY WILLOWS UPWARD 44A WW 44A FEBRUARY 21 2013 #1747541

4

S: SITZ UPWARD 307R

LEACHMAN RIGHT TIME
BAD LANDS RIGHT TIME 78N
BAD LANDS DUCHESS 809H

D: WWF RIGHT TIME PRIDE 87X
STEVENSON BRUNO 561G
WWF BRUNO PRIDE 31M
THOMASON PRIDE 16J

LMY	RIB EYE	%IMF	RIB FAT	RUMP FAT
61.9	11.81	2.44	0.25	0.25

	WTs	EPDs
BW	82	+2.4
WW	628	+57
YW	1154	+102
MILK	-	+31
AGE DAM	3	-
TEST ADG	3.29	-
CALVING EASE		

Upward 44A is a good calf that displays excellent muscling, much like his older brother Upper Cut 44Y whom is currently in service here. Check out his EPDs. They are impressive!

WINDY WILLOWS UPWARD 48A WW 48A FEBRUARY 22 2013 #1747544

5

S: SITZ UPWARD 307R

CUDLOBE YELLOWSTONE 80M
SOO LINE YELLOWSTONE 237P
WWF TRENDY ERROLLINE 34L

D: GBT MISS RITO 62S
GDAR DUTCH 1508
SOO LINE MISS RITO 345P
DWAJO OF RITO 334M

LMY	RIB EYE	%IMF	RIB FAT	RUMP FAT
63.7	12.43	4.95	0.20	0.25

	WTs	EPDs
BW	82	+2.7
WW	589	+53
YW	1149	+101
MILK	-	+29
AGE DAM	7	-
TEST ADG	3.50	-
CALVING EASE		



WINDY WILLOWS
UPWARD 54A
LOT 6

WINDY WILLOWS UPWARD 54A WW 54A FEBRUARY 23 2013 #1747549

6

S: SITZ UPWARD 307R

HIGH VALLEY 4C6 AMBUSH
BAD LANDS AMBUSH 45M
BAD LANDS BLACKLASS 808H

D: WWF AMBUSH BLACKBIRD 174U
SITZ ALLIANCE 6595
WWF ALLIANCE BLACKBIRD 105M
WWF STOCKMAN BLACKBIRD 105H

LMY	RIB EYE	%IMF	RIB FAT	RUMP FAT
64.6	11.94	3.47	0.15	0.19

	WTs	EPDs
BW	80	+2.4
WW	596	+54
YW	1114	+99
MILK	-	+30
AGE DAM	5	-
TEST ADG	3.24	-
CALVING EASE		

The 3 closest sires in this pedigree, Alliance, Ambush and Upward have generated a lot of quality cattle throughout the industry. This bull is rich in maternal genetics and has a very moderate birth weight.

WINDY WILLOWS UPWARD 60A WW 60A FEBRUARY 26 2013 #1747555

7

S: SITZ UPWARD 307R

HIGH VALLEY 4C6 AMBUSH
BAD LANDS AMBUSH 45M
BAD LANDS BLACKLASS 808H

D: WWF AMBUSH LUCY 212T
YOUNG DALE HERCULES 810H
WWF HERCULES LUCY 108L
WWF VAL LUCY 25C

LMY	RIB EYE	%IMF	RIB FAT	RUMP FAT
62.6	13.10	3.16	0.26	0.36

	WTs	EPDs
BW	80	+2.4
WW	658	+60
YW	1196	+101
MILK	-	+26
AGE DAM	6	-
TEST ADG	3.37	-
CALVING EASE		

This bull showed a weaning index of 108 and a yearling index of 107. How many bulls can you find with a set of EPDs like his. His dam is another outstanding Ambush daughter. I'd like all our cows to look just like her, deep, angular, strong topped and a beautiful square udder with small teats.



WINDY WILLOWS
UPWARD 60A
LOT 7

7

WINDY WILLOWS UPWARD 62A**WW 62A FEBRUARY 27 2013 #1747557****S: SITZ UPWARD 307R**

HIGH VALLEY 4C6 AMBUSH
 BAD LANDS AMBUSH 45M
 BAD LANDS BLACKLASS 808H

D: WWF AMBUSH ERICA 98T

E&B 1483 SCOTCHMAN 543
 WWF SCOTCHMAN ERICA 90M
 WWF PUCKETT ERICA 70H

LMY	RIB EYE	%IMF	RIB FAT	RUMP FAT
62.9	12.40	3.86	0.23	0.28

	WTs	EPDs
BW	76	+1.8
WW	562	+52
YW	1050	+93
MILK	-	+29
AGE DAM	6	-
TEST ADG	3.05	-
CALVING EASE		

Most of our Ambush daughters were mated to Upward and that combination worked extremely well. Two sons of Erica 98T sold in previous sales and a maternal sister was Hillary's 4H heifer in 2012.

**WINDY WILLOWS
 UPWARD 62A
 LOT 8**

9

WINDY WILLOWS UPWARD 64A**WW 64A FEBRUARY 27 2013 #1747559****S: SITZ UPWARD 307R**

MINBURN MAIN EVENT 50M
 KBJ MAIN EVENT 805S
 BT QUEEN 657K

D: WWF MN EVENT JESTRESS 54U

S A F FAME AMF CAF NHF DDF
 WWF FAMOUS JESTRESS 15L
 MFA JESTRESS 54F

LMY	RIB EYE	%IMF	RIB FAT	RUMP FAT
62.6	12.10	4.37	0.23	0.20

	WTs	EPDs
BW	78	+1.9
WW	617	+55
YW	1049	+98
MILK	-	+32
AGE DAM	5	-
TEST ADG	2.70	-
CALVING EASE		

Check out the very moderate birth weight on this good bull. Another great set of EPDs. Upward probably generates more consistent performance than any other AI sire we have used and it is balanced with strong maternal value.

WINDY WILLOWS UPWARD 66A**WW 66A FEBRUARY 28 2013 #1747560****S: SITZ UPWARD 307R**

TC MOONSHINE 001
 FULL MOON 15P
 MFA BETSY 24M

D: WWF FULL MOON MISSIE 147S

CAR PRIME TIME 013
 WWF PRIME TIME MISSIE 75M
 WWF STOCKMAN MISSIE 137K

LMY	RIB EYE	%IMF	RIB FAT	RUMP FAT
61.4	11.92	4.11	0.27	0.22

	WTs	EPDs
BW	78	+0.4
WW	650	+60
YW	1117	+111
MILK	-	+30
AGE DAM	7	-
TEST ADG	2.92	-
CALVING EASE		

Upward 66A is in the top 3% of the breed for Weaning EPD and top 1% for Yearling EPD and top 2% FOR Milk EPD. When is the last time you had a chance to bid on a bull with EPDs like that? The dam is a daughter of our highly prized Missie 75M donor cow. Missie 147S is a larger framed and deep sided daughter of the Full Moon bull we owned with Brian McCarthy.

10

**WINDY WILLOWS UPWARD 66A - LOT 10****WINDY WILLOWS UPWARD 99A****WW 99A MARCH 06 2013 #1747585****S: SITZ UPWARD 307R**

G D A R TRAVELER 71
 SITZ TRAVELER 8180
 SITZ EVERELDA ENTENSE 1137

D: WWF TRAVELER BARBARA 54X

BAD LANDS RIGHT TIME 78N
 WWF RIGHT TIME BARBARA 42T
 WWF KRUGERRAND BARBARA 144P

LMY	RIB EYE	%IMF	RIB FAT	RUMP FAT
63.0	13.12	4.06	0.35	0.23

	WTs	EPDs
BW	92	+3.5
WW	652	+63
YW	1208	+113
MILK	-	+32
AGE DAM	3	-
TEST ADG	3.48	-

Only Lot 13 in this sale has a higher weaning and yearling EPD than 99A. He ranks in the top 1% of all Angus bulls for growth and top 1% for milk. The cow family that produced him is well represented in this sale. His grand dam produced the Feature Lot 2 bull and his great grand dam produced the Feature Lot 63 heifer.



WINDY WILLOWS
UPWARD 101A
LOT 12

WINDY WILLOWS UPWARD 101A WW 101A MARCH 06 2013 #1747380

12

S: SITZ UPWARD 307R

SITZ TRAVELER 8180
SITZ ALLIANCE 6595
SITZ BARBAMERE JET 2698

D: WWF ALLIANCE QUEEN 59R
CENTURY TOUCHSTONE 131
WWF TOUCHSTONE QUEEN 13E
WWF LNDMARK QUEEN MOTHER 1U

LMY	RIB EYE	%IMF	RIB FAT	RUMP FAT
63.8	11.91	4.00	0.18	0.18

	WTs	EPDs
BW	90	+4.7
WW	590	+50
YW	1100	+97
MILK	-	+30
AGE DAM	8	-
TEST ADG	3.19	-

These Upward sons are so consistently high performing you couldn't go wrong with any of them. The dam is one of the good Alliance daughters that are so highly regarded throughout the industry for their production capabilities.

WINDY WILLOWS UPWARD 118A WW 118A MARCH 10 2013 #1747390

13

S: SITZ UPWARD 307R

G A R GRID MAKER
S A V BISMARCK 5682
S A V ABIGALE 0451

D: WWF BISMARCK KEEPSAKE 38W
BAD LANDS RIGHT TIME 78N
WWF RIGHT TIME KEEPSAKE 106T
WWF FORTUNE KEEPSAKE 19J

LMY	RIB EYE	%IMF	RIB FAT	RUMP FAT
64.7	13.99	5.51	0.21	0.26

	WTs	EPDs
BW	88	+2.4
WW	658	+64
YW	1225	+114
MILK	-	+35
AGE DAM	4	-
TEST ADG	3.55	-

FEATURE: The last is certainly not least! Rob likes this bull as well as any of the Upward sons and his picture shows why. He is as strong and stout as any bull in the offering. He ranks in the top 1% for Weaning EPD, Yearling EPD and Milk EPD while at the same time below breed average for Birth Weight EPD. Phenomenal! His dam is a really nice Bismarck that has an average adjusted weaning weight of 676 lbs on 3 bull calves for a ratio of 115. If you are looking for one of the best, you'd best consider him! The only thing he is short on is ears and that's not heritable!

WINDY WILLOWS UP COUNTRY 92A WW 92A MARCH 4 2013 #1771666

14

CONNEALY ONWARD
SITZ UPWARD 307R 1385926
SITZ HENRIETTA PRIDE 81M

S: SITZ UP COUNTRY 428W
SITZ NEW DESIGN 349M
SITZ ELLUNA ELITE 94P
SITZ ELLUNA ELITE 163M

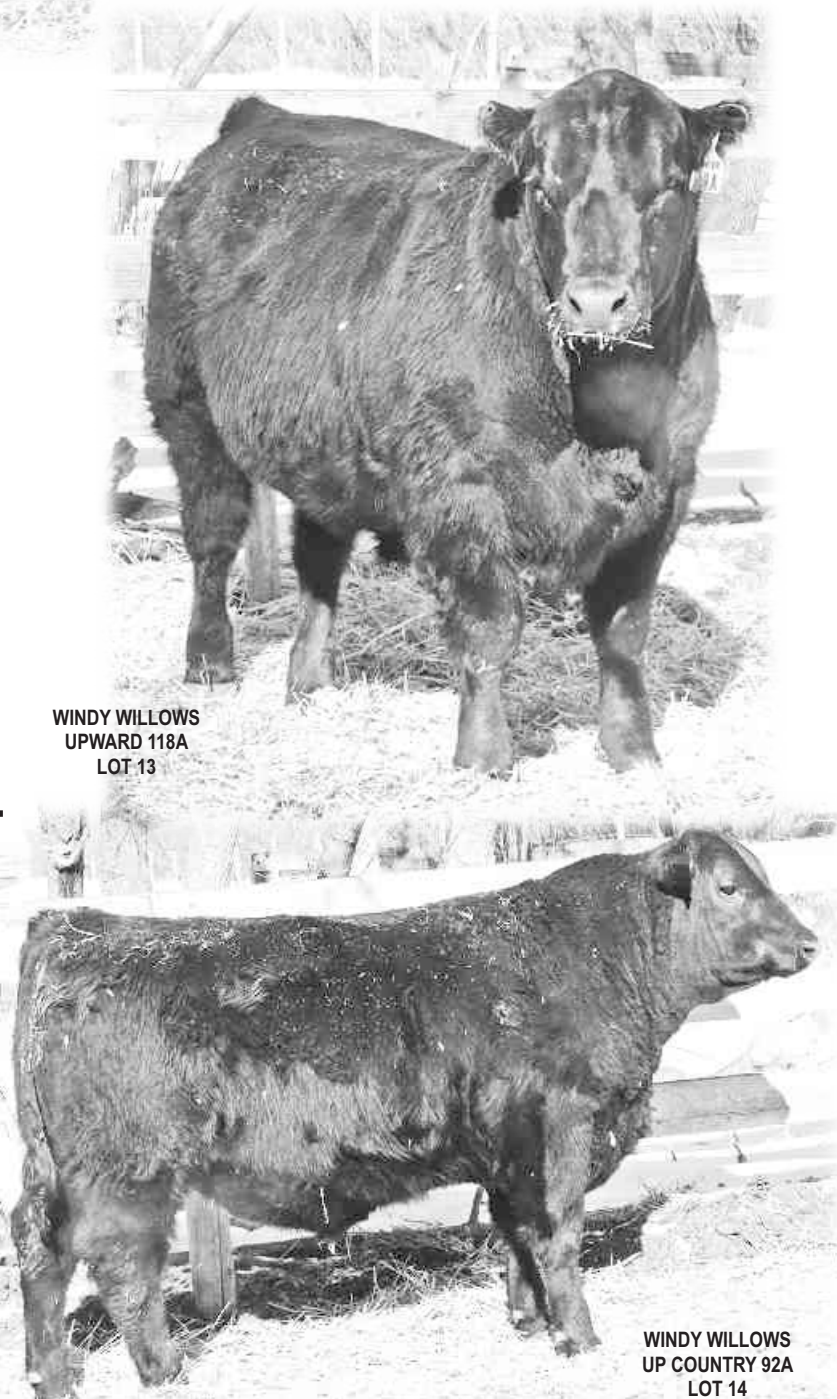
S A F FOCUS OF E R
ER FOCUS J009
SITZ BLACKCAP BARDOLIER 356

D: KG KEM 4059
SITZ IDEAL 8069
KG KEM 2243
KG KEM 9266

	WTs	EPDs
BW	78	+0.4
WW	692	+63
YW	1251	+107
MILK	-	+31
AGE DAM	9	-
TEST ADG	3.49	-
CALVING EASE		

LMY	RIB EYE	%IMF	RIB FAT	RUMP FAT
60.0	12.10	3.63	0.33	0.25

With Rob's help, we were fortunate to obtain a package of seven cows from the heart of the KG Ranch program at Three Forks Montana. This high performance calf is a son of the Up Country bull featured at KG Ranch. Up Country is from the same dam as Sitz Wisdom, another KG Ranch herd sire of note. Up Country 92A had a weaning index of 115 and will be one of the heaviest bulls on sale day.



WINDY WILLOWS
UPWARD 118A
LOT 13

WINDY WILLOWS
UP COUNTRY 92A
LOT 14

REFERENCE SIRE

S A V FINAL ANSWER 0035
IMP 035K FEBRUARY 22 2000 #1061938
BW: LBS. ADJ 205 DAY WT: LBS.
ADJ 365 DAY WT: LBS.

TRAVELER 1148 G D A R
 G D A R TRAVELER 71
 G D A R MISS BLACKCAP 567
S: SITZ TRAVELER 8180
 G D A R RAINMAKER 340
 SITZ EVERELDA ENTENSE 1137
 SITZ EVERELDA ENTENSE 2335

TEHAMA BANDO 155
 BON VIEW BANDO 598
 BON VIEW DORA 56
D: S A V EMULOUS 8145
 ELLANIN SKY DIVER
 S A V SKY EMULOUS 2124
 TAIL N 0383

BW	WW	YW	MILK	REA	%IMF	FAT
-1.0	+61	+103	+25	+0.47	+0.52	+0.031

Final Answer was born in 2000 and was still the most widely used bull in North America in 2012 and with good reason. His calves are consistently low birth weight. We have used him on most of our heifers the last five years and their average birth weight is 70 pounds. Despite being so small at birth they really grow! You may be surprised by the performance these Final Answer sons have exhibited. While we recommend his sons for use on heifers, make no mistake, they are much more than calving ease bulls. Want more? His daughters in production are proving their worth with sound, attractive udders and more than adequate milk.

15

WINDY WILLOWS FINAL ANSWER 16A
WW 16A FEBRUARY 05 2013 #1747520

S: S A V FINAL ANSWER 0035

NORTHERN VIEW QUANTUM 86P
 NORTHERN VIEW QUANTUM 83W
 WWF AMBUSH BELLE 166P
D: WWF QUANTUM BLACKBIRD 107Y
 BAD LANDS AMBUSH 45M
 WWF AMBUSH BLACKBIRD 127T
 WWF FOCUS BLACKBIRD E 21L

LMY	RIB EYE	%IMF	RIB FAT	RUMP FAT
65.0	11.78	4.26	0.30	0.25

	WTs	EPDs
BW	70	-0.2
WW	703	+57
YW	1195	+90
MILK	-	+25
AGE DAM	2	-
TEST ADG	3.08	-
CALVING EASE ELITE		

FEATURE: Final Answer 16A is the highest indexing calf at weaning with a 119 index, first out of 75 bulls. He is long, deep and stout with an excellent hair coat. Check out the spread between his BW EPD and his WN EPD. Not many bulls can provide that much confidence in calving ease and still provide so much growth. His dam is by the Quantum bull we purchased from Northern View and that makes her double bred to Ambush. No surprise that Ambush keeps turning up in the pedigrees of many of our top bulls!



WINDY WILLOWS FINAL ANSWER 4A WW 4A FEBRUARY 01 2013 #1773216

16

S: S A V FINAL ANSWER 0035

CRESCENT CREEK ALLIANCE 29N
CRESCENT CREEK TROUBADOUR 34U
CRESCENT CREEK DUCHESS 51M

D: WWF TROUBADOUR RUBY 105Y
V D A R NEW TREND 315
FCR RUBY 25K
BATSCOL RUBY 60A

LMY	RIB EYE	%IMF	RIB FAT	RUMP FAT
558.2	11.74	3.82	0.39	0.35

	WTs	EPDs
BW	64	+1.2
WW	639	+48
YW	1111	+78
MILK	-	+20
AGE DAM	2	-
TEST ADG	2.95	-
CALVING EASE		

A very attractive calving ease bull out of a daughter of Ruby 25K, a donor cow we owned with Eastondale Angus.

WINDY WILLOWS FINAL ANSWER 9A WW 9A FEBRUARY 03 2013 #1747514

17

S: S A V FINAL ANSWER 0035

CONNEALY ONWARD
SITZ UPWARD 307R
SITZ HENRIETTA PRIDE 81M

D: WWF UPWARD MISSIE 62Y
BON VIEW NEW DESIGN 878
WWF DESIGNER MISSIE 69P
WWF ALLIANCE MISSIE 112M

LMY	RIB EYE	%IMF	RIB FAT	RUMP FAT
62.6	14.05	2.93	0.29	0.23

	WTs	EPDs
BW	72	+0.5
WW	675	+63
YW	1210	+108
MILK	-	+30
AGE DAM	2	-
TEST ADG	3.34	-
CALVING EASE ELITE		

A Calving ease Elite bull with an impressive set of numbers! Top 10% of the breed for low BW, top 1% for WW and top 2% for YW and Milk! He also has impressive carcass EPDs. Numbers aren't everything though and this bull has caught the attention of several visitors. His dam is a really good Upward daughter. Look him up!



4-H CURLING TEAM

WINDY WILLOWS FINAL ANSWER 10A WW 10A FEBRUARY 04 2013 #1747515

18

S: S A V FINAL ANSWER 0035

SANDY BAR ADVANTAGE 43M
HF KODIAK 5R A
WILBAR RUBY 955N

D: WWF KODIAK CATHERINE 45Y
LOST LAKE ICEBERG 3438
CAR CATHERINE 028
C A R REAL LADY 681

LMY	RIB EYE	%IMF	RIB FAT	RUMP FAT
63.0	11.59	2.75	0.20	0.10

	WTs	EPDs
BW	70	-0.6
WW	556	+48
YW	1094	+86
MILK	-	+22
AGE DAM	2	-
TEST ADG	3.37	-
CALVING EASE ELITE		

What happens when you combine Final Answer and Kodiak? Here is the answer – ultra calving ease and a lot of style. I've always liked this bull whenever I noticed him in the pen. He has a good square hip to him and a very good coat of hair. His dam is a daughter of the Catherine cow that resides here and she is the grand dam of the Boomer bull we own with Mark Jones of Barrhead.





WINDY WILLOWS
FINAL ANSWER 12A
LOT 19
(BOTH PHOTOS)



WINDY WILLOWS FINAL ANSWER 12A WW 12A FEBRUARY 05 2013 #1747517

19

S: S A V FINAL ANSWER 0035

CRESCENT CREEK ALLIANCE 29N
CRESCENT CREEK TROUBADOUR 34U
CRESCENT CREEK DUCHESS 51M

D: WWF TROUBADOUR PRIZALLIE 138Y
KBJ ROGUE II 203H
KBJ PRIZALLIE 362N
KBJ PRIZALLIE 34C

LMY	RIB EYE	%IMF	RIB FAT	RUMP FAT
63.9	11.51	3.65	0.16	0.25

	WTs	EPDs
BW	56	-2.1
WW	584	+45
YW	1054	+78
MILK	-	+21
AGE DAM	2	-
TEST ADG	2.94	-
CALVING EASE ELITE		

If calving ease is your highest priority when selecting your next bull, have a look here. Final Answer 12A has a birth weight of 56 lbs and the lowest BW EPD in the entire offering. The best part is you don't have to give up growth and quality to get that calving ease.

WINDY WILLOWS FINAL ANSWER 14A WW 14A FEBRUARY 05 2013 #1747518

20

S: S A V FINAL ANSWER 0035

CRESCENT CREEK ALLIANCE 29N
CRESCENT CREEK TROUBADOUR 34U
CRESCENT CREEK DUCHESS 51M

D: WWF TROUBADOUR POPPY ANN 144Y
RITO 616 OF 4B20 6807
WINDY WILLOWS POPPY ANN 12M
FAIRMOUNT POPPY ANN 12K

LMY	RIB EYE	%IMF	RIB FAT	RUMP FAT
60.7	13.28	3.19	0.34	0.42

	WTs	EPDs
BW	66	+0.2
WW	633	+53
YW	1181	+92
MILK	-	+22
AGE DAM	2	-
TEST ADG	3.42	-
CALVING EASE ELITE		

When you study the numbers it is easy to see why Final Answer sons have the reputation for low birth weight followed by remarkable growth. This bull is no exception. Weaning index 107 and Yearling index 109. His dam is one of our best Troubadour daughters.

WINDY WILLOWS
FINAL ANSWER 14A
LOT 20

WINDY WILLOWS FINAL ANSWER 20A WW 20A FEBRUARY 07 2013 #1747523

21

S: S A V FINAL ANSWER 0035

CONNELLY ONWARD
SITZ UPWARD 307R
SITZ HENRIETTA PRIDE 81M

D: WWF UPWARD BRIDE 77Y
SOUTHERN KRUGGERAND 16H
WWF KRUGERRAND BRIDE 126P
WWF FORTUNE BRIDE 22E

LMY	RIB EYE	%IMF	RIB FAT	RUMP FAT
63.7	10.83	5.46	0.15	0.21

	WTs	EPDs
BW	80	+1.8
WW	643	+56
YW	1074	+98
MILK	-	+26
AGE DAM	2	-
TEST ADG	2.70	-
CALVING EASE		

This bull is out of an Upward daughter making him a ¼ brother to Lot 17. Moderate birth, high growth and lots of milk – what more could you need!

WINDY WILLOWS
FINAL ANSWER 20A
LOT 21

WINDY WILLOWS FINAL ANSWER 22A 22

WW 22A FEBRUARY 09 2013 #1747525

S: S A V FINAL ANSWER 0035

MINBURN MAIN EVENT 181N
MINBURN MAIN STREET 146S
MINBURN KEEPSAKE 16J
D: WWF MN STREET BARBARA 244Y
AA R REALLY WINDY 120S
WWF WINDY BARBARA 28R
WINDY WILLOWS BARBARA 1N

LMY	RIB EYE	%IMF	RIB FAT	RUMP FAT
64.0	11.56	4.07	0.16	0.17

	WTs	EPDs
BW	68	+0.3
WW	594	+52
YW	1015	+96
MILK	-	+24
AGE DAM	2	-
TEST ADG	2.63	-
CALVING EASE ELITE		

If you are breeding heifers this year, exposure to these Final Answer sons will certainly add value to them.



WINDY WILLOWS FINAL ANSWER 25A - LOT 23

11TH ANNUAL GIT 'R DONE BULL & FEMALE SALE

WINDY WILLOWS FINAL ANSWER 25A 23

WW 25A FEBRUARY 10 2013 #1747527

S: S A V FINAL ANSWER 0035

MINBURN MAIN EVENT 181N
MINBURN MAIN STREET 146S
MINBURN KEEPSAKE 16J
D: WWF MN STREET ERICA 134Y
WIWA CREEK STOCKMAN 26'95
WWF STOCKMAN ERICA 97J
WWF BRAD ERICA 49B

LMY	RIB EYE	%IMF	RIB FAT	RUMP FAT
61.0	11.66	3.88	0.28	0.29

	WTs	EPDs
BW	68	-0.2
WW	640	+52
YW	1157	+96
MILK	-	+25
AGE DAM	2	-
TEST ADG	3.23	-
CALVING EASE ELITE		

Big top, lots of hair, good bull.

WINDY WILLOWS FINAL ANSWER 26A 24

WW 26A FEBRUARY 11 2013 #1747528

S: S A V FINAL ANSWER 0035

N BAR EMULATION EXT
LEACHMAN RIGHT TIME
LEACHMAN ERICA 0025
D: WWF RIGHT TIME JACKIE 52Y
SITZ ALLIANCE 659S
TLA JACKIE 12L
DIAMOND RIVER JACKIE 75C

LMY	RIB EYE	%IMF	RIB FAT	RUMP FAT
61.6	11.87	4.86	0.26	0.38

	WTs	EPDs
BW	72	+0.1
WW	653	+55
YW	1216	+94
MILK	-	+25
AGE DAM	2	-
TEST ADG	3.52	-
CALVING EASE ELITE		

Weaning index of 109 and Yearling index of 112. The dam is an ET daughter of Leachman Right Time, reknowned for the quality of his females and out of Jackie 12L, a donor cow we purchased from Shane Castle in his cowherd dispersal. Keep all the daughters.



WINDY WILLOWS PIONEER 75A - LOT 25

WINDY WILLOWS PIONEER 75A 25

WW 75A MARCH 1 2013 APPLIED FOR

SITZ TRAVELER 8180
S A V FINAL ANSWER 0035
S A V EMULOUS 8145
S: S A V PIONEER 7301
BOYD NEW DAY 800S
S A V BLACKBIRD 5297
S A V BLACKBIRD 1082

GARDENS PRIME TIME
CAR PRIME TIME 013
C A R MISS 871
D: WWF PRIME TIME MISSIE 75M
WIWA CREEK STOCKMAN 26'95
WWF STOCKMAN MISSIE 137K
CALLAMERE MISSIE 72G

LMY	RIB EYE	%IMF	RIB FAT	RUMP FAT
62.4	12.80	3.07	0.36	0.32

	WTs	EPDs
BW	74	+0.2
WW	618	+49
YW	-	+95
MILK	-	+23
AGE DAM	ET	-
TEST ADG	2.96	-
CALVING EASE ELITE		

Pioneer 75A has had several full brothers sell through this sale and all have been well received. Missie 75M is an Elite Dam and has been an extremely successful donor cow for us. She is easy keeping, moderately sized and has a beautiful udder even at 11 years of age. The mating to Pioneer has resulted in easy calving, easy fleshing and highly maternal genetics. If you are building a cowherd, this bull could be that important building block.

REFERENCE SIRE



S A V BISMARCK 5682
 (ET) IMP 5682R FEBRUARY 01 2005 #1369591
 BW: LBS. ADJ 205 DAY WT: LBS.
 ADJ 365 DAY WT: LBS.

D H D TRAVELER 6807
 G D A R TRAVELER 044
 G D A R BLACKCAP LADY 840
S: G A R GRID MAKER
 G A R PRECISION 1680
 G A R PRECISION 2536
 G A R EXT 2104

A A R NEW TREND
 SCHOENES FIX IT 826
 SKY HIGH BLACKBIRD 4119
D: S A V ABIGALE 0451
 BON VIEW EMULATION EXT 473
 S A V ABIGALE 6062
 CIRCLE A ABIGALE 3008

BW	WW	YW	MILK	REA	%IMF	FAT
+0.3	+57	+97	+26	+0.94	+0.46	-0.044

Bismarck has been used on our Final Answer heifers for several years. He sired our high selling bull to Mark Jones Land & Cattle in 2012 and his daughters are turning out very well for us. Bismarck has achieved an industry wide reputation for siring muscle, style and maternal excellence in addition to calving ease.



WINDY WILLOWS BISMARCK 24A
 WW 24A FEBRUARY 10 2013 #1747526

S: S A V BISMARCK 5682

S A V FINAL ANSWER 0035
 HARB PENDLETON 765 J H
 H A R B BLACK LADY 375 J H
D: WWF PENDLETON BLACKBIRD 88Y
 STEVENSON BRUNO 561G
 WWF BRUNO BLACKBIRD 35M
 WWF SAM'S BLACKBIRD 118G

LMY	RIB EYE	%IMF	RIB FAT	RUMP FAT
62.8	11.66	4.19	0.21	0.22

	WTs	EPDs
BW	68	+0.8
WW	621	+51
YW	1176	+92
MILK	-	+27
AGE DAM	2	-
TEST ADG	3.52	-
CALVING EASE ELITE		

A long bodied Bismarck son with style. Weaning index of 104 and Yearling index of 110. This good bull is double bred for calving ease as his dam is sired by the Final Answer son, Pendleton.



WINDY WILLOWS BISMARCK 15A
 WW 15A FEBRUARY 05 2013 #1747519

S: S A V BISMARCK 5682

GDAR QUANTUM 963
 NORTHERN VIEW QUANTUM 86P
 CRESCENT CREEK BLACKBIRD 21J
D: NORTHERN VIEW JESTRESS 9Y
 WINDY WILLOWS AMBUSH 143P
 NORTHERN VIEW JESTRESS 35U
 EBON HILL JESTRESS 163'00

LMY	RIB EYE	%IMF	RIB FAT	RUMP FAT
61.5	11.99	4.16	0.27	0.23

	WTs	EPDs
BW	64	-1.1
WW	628	+48
YW	1134	+83
MILK	-	+22
AGE DAM	2	-
TEST ADG	3.16	-
CALVING EASE ELITE		

Ultra low birth weight EPD here, this bull would be great for heifers.

WINDY WILLOWS BISMARCK 76A
WW 76A MARCH 01 2013 #1747569

28

S: S A V BISMARCK 5682

SITZ TRAVELER 8180
 S A V FINAL ANSWER 0035
 S A V EMULOUS 8145

D: WWF FA LUCY 10W

BAD LANDS AMBUSH 45M
 WWF AMBUSH LUCY 129T
 WWF HERCULES LUCY 150K

LMY	RIB EYE	%IMF	RIB FAT	RUMP FAT
63.5	13.23	2.93	0.23	0.19

	WTs	EPDs
BW	84	+1.9
WW	602	+52
YW	1121	+88
MILK	-	+26
AGE DAM	4	-
TEST ADG	3.24	-
CALVING EASE		

Bismarck 76A is a full brother to our high selling bull in 2012 to Mark Jones Land & Cattle.



HOLLBROOK BISMARCK 104A - LOT 30

WINDY WILLOWS BISMARCK 85A
WW 85A MARCH 02 2013 #1747575

29

S: S A V BISMARCK 5682

CAR DUKE 104
 S A V HERITAGE 6295
 S A V BLACKCAP MAY 4136 CAF

D: WWF HERITAGE MISS LARK 51W

SITZ ALLIANCE 6595 DMF
 WWF ALLIANCE MISS LARK 57N
 FAIRMOUNT MISS LARK 5J

LMY	RIB EYE	%IMF	RIB FAT	RUMP FAT
60.7	12.96	4.23	0.33	0.39

	WTs	EPDs
BW	82	+2.0
WW	671	+59
YW	1205	+100
MILK	-	+28
AGE DAM	4	-
TEST ADG	3.34	-
CALVING EASE		

Bismarck, Heritage and Alliance make for excellent maternal traits in this bull. Weaning Index of 110 and Yearling Index of 106.

HOLLBROOK BISMARCK 104A
PUA 104A MARCH 07 2013 #1772702

30

S: S A V BISMARCK 5682

SITZ TRAVELER 8180
 S A V FINAL ANSWER 0035
 S A V EMULOUS 8145

D: HOLLBROOK ERICA 10X

MINBURN MAIN STREET 146S
 WWF MN STREET ERICA 85U
 WWF FORTUNE ERICA 37K

LMY	RIB EYE	%IMF	RIB FAT	RUMP FAT
61.7	11.61	3.55	0.25	0.30

	WTs	EPDs
BW	76	+1.7
WW	623	+54
YW	1077	+93
MILK	-	+25
AGE DAM	3	-
TEST ADG	2.84	-
CALVING EASE		

Garth Hollinger has a few cows with us and this bull is out of his good Final Answer daughter. That same combination produced our high seller in 2012.

MINBURN MAIN STREET 146S
DWW 146S FEBRUARY 23 2006 #1363099
BW: 97LBS. ADJ 205 DAY WT: 843LBS
ADJ 365 DAY WT: 1449LBS.

REFERENCE SIRE

STEVENSON FORTUNE 425C
 CRESCENT CREEK MAIN EVENT 6H
 CRESCENT CREEK ROSEBUD 115F

S: MINBURN MAIN EVENT 181N

G D A R ROGUE 6322
 MINBURN ERICA 123H
 MINBURN ERICA 116D

MINBURN LANCER 11B
 MINBURN LANCER 31F
 DWW MINBURN BLACKBIRD 44W

D: MINBURN KEEPSAKE 16J

WIWA CREEK TREND 51'93
 MINBURN KEEPSAKE 78G
 MINBURN KEEPSAKE 81B

BW	WW	YW	MILK	REA	%IMF	FAT
+5.7	+43	+104	+28	-0.23	-0.21	+0.005

Main Street came to Windy Willows as the \$13,250 high selling bull from the Minburn Bull Sale. Main Street is powerfully made with plenty of bone, a big round foot and a burly masculine carriage. He is long bodied with a strong top, wide rump, and a long thick hair coat. His sons are made exactly the same way and he stamps them all. He sires more performance than any bull we have ever used and currently ranks in the top 4% of the breed for Yearling Weight EPD at +104. While the Main Street sons are cow bulls, their birth weights are very consistent. Main Street has sired over 160 calves here and we have never assisted a cow that was bred to him. Unassisted calving is expected from all our cows. His daughters are broody females, moderate framed with plenty of capacity, well attached udders and abundant milk. Main Street's Milk EPD is +27, putting him in the top 8% of the breed for Milk.





WINDY WILLOWS MAIN STREET 39A
WW 39A FEBRUARY 18 2013 #1747538

31

S: MINBURN MAIN STREET 146S

O C C MAGNUM 749M
 MERIT MAGNUM 5053
 MERIT LADY MCHENRY 123K
D: WWF MAGNUM ERICA 89T
 S A F FAME
 WWF FAMOUS ERICA 27L
 WWF STOCKMAN ERICA 97J

LMY	RIB EYE	%IMF	RIB FAT	RUMP FAT
63.1	12.67	2.52	0.23	0.25

	WTs	EPDs
BW	84	+3.2
WW	601	+41
YW	1166	+81
MILK	-	+21
AGE DAM	6	-
TEST ADG	3.53	-

FEATURE: Main Street 39A is a long, deep sided calf with the a burly, masculine head and front end so typical of the Main Street sons. Yearling index of 112, 6th out of 60 bulls.



WINDY WILLOWS MAIN STREET 36A
WW 36A FEBRUARY 17 2013 #1747535

32

S: MINBURN MAIN STREET 146S

G A R GRID MAKER
 S A V BISMARCK 5682
 S A V ABIGALE 0451
D: WWF BISMARCK PRIDE 21W
 BAD LANDS RIGHT TIME 72N
 WWF RIGHT TIME PRIDE 148T
 THOMASON PRIDE 16J

LMY	RIB EYE	%IMF	RIB FAT	RUMP FAT
63.6	13.36	3.97	0.23	0.27

	WTs	EPDs
BW	80	+2.5
WW	643	+49
YW	1124	+97
MILK	-	+26
AGE DAM	4	-
TEST ADG	3.01	-

A very moderate birth weight calf. His dam is a long bodied attractive cow with a very nice udder.



WINDY WILLOWS MAIN STREET 46A
TWIN WW 46A FEBRUARY 21 2013 #1747543

33

S: MINBURN MAIN STREET 146S

KRUGERRAND OF DONAMERE 490
 SOUTHERN KRUGGERAND 16H
 SOUTHERN TALL PRIDE 72W
D: WWF KRUGERRAND BRIDE 126P
 MINERTS FORTUNE 2000
 WWF FORTUNE BRIDE 22E
 WWF B SKY BRIDE 8Y

LMY	RIB EYE	%IMF	RIB FAT	RUMP FAT
59.6	9.41	4.00	0.26	0.28

	WTs	EPDs
BW	72	+4.2
WW	-	+34
YW	1099	+74
MILK	-	+20
AGE DAM	9	-
TEST ADG	3.85	-
CALVING EASE		

Main Street 46A was the highest gaining bull on feed. These Main Street sons all have his powerful broad hip, long body and strong masculine character.

WINDY WILLOWS MAIN STREET 63A
WW 63A FEBRUARY 27 2013 #1747558

34

S: MINBURN MAIN STREET 146S

LEACHMAN RIGHT TIME
 BAD LANDS RIGHT TIME 78N
 BAD LANDS DUCHESS 809H

D: WWF RIGHT TIME PRIDE 148T

WIWA CREEK STOCKMAN 32'95
 THOMASON PRIDE 16J
 WIWA CREEK PRIDE 12'92

LMY	RIB EYE	%IMF	RIB FAT	RUMP FAT
62.8	12.60	3.55	0.24	0.29

	WTs	EPDs
BW	88	+4.4
WW	584	+41
YW	1111	+84
MILK	-	+22
AGE DAM	6	-
TEST ADG	3.30	-

The dam here, Pride 148T is a typical highly maternal daughter of our Right Time bull that remains in use through AI.



FIRST TIME SHOWING AT AGRIBITION

WINDY WILLOWS MAIN STREET 80A
WW 80A MARCH 01 2013 #1747573

35

S: MINBURN MAIN STREET 146S

CRESCENT CREEK ALLIANCE 29N
 CRESCENT CREEK IRON MAN 93R
 CRESCENT CREEK DANA 35M

D: WWF IRON ERICA 39T

V D A R NEW TREND 315
 WWF TRENDY ERICA 14F
 WWF LNDMARK ERICA 18T

LMY	RIB EYE	%IMF	RIB FAT	RUMP FAT
62.4	12.43	3.55	0.25	0.19

	WTs	EPDs
BW	70	+1.4
WW	585	+39
YW	1119	+84
MILK	-	+22
AGE DAM	6	-
TEST ADG	3.34	-

CALVING EASE

Another long bodied, big hipped Main Street son with an excellent hair coat. His dam is one of our highly valued Iron Man daughters.



WINDY WILLOWS MAIN STREET 80A - LOT 35

WINDY WILLOWS MAIN STREET 102A
TW WW 102A MARCH 07 2013 #1747381

36

S: MINBURN MAIN STREET 146S

CRESCENT CREEK ALLIANCE 29N
 CRESCENT CREEK IRON MAN 93R
 CRESCENT CREEK DANA 35M

D: WWF IRON KEEPSAKE 43T

V F VENTURE FORWARD
 WWF VENTURE KEEPSAKE 17L
 WWF FORTUNE KEEPSAKE 19J

LMY	RIB EYE	%IMF	RIB FAT	RUMP FAT
63.8	13.62	5.42	0.23	0.37

	WTs	EPDs
BW	72	+3.5
WW	585	+43
YW	1120	+93
MILK	-	+26
AGE DAM	6	-
TEST ADG	3.34	-

CALVING EASE

A ¾ brother to the last lot.



JUNIOR SHOWMAN AT YOUNG RANCHMAN'S SHOW

CAN'T MAKE IT TO THE SALE?
SEE PAGE 4 FOR INFORMATION ON HOW WE CAN HELP

REFERENCE SIRE

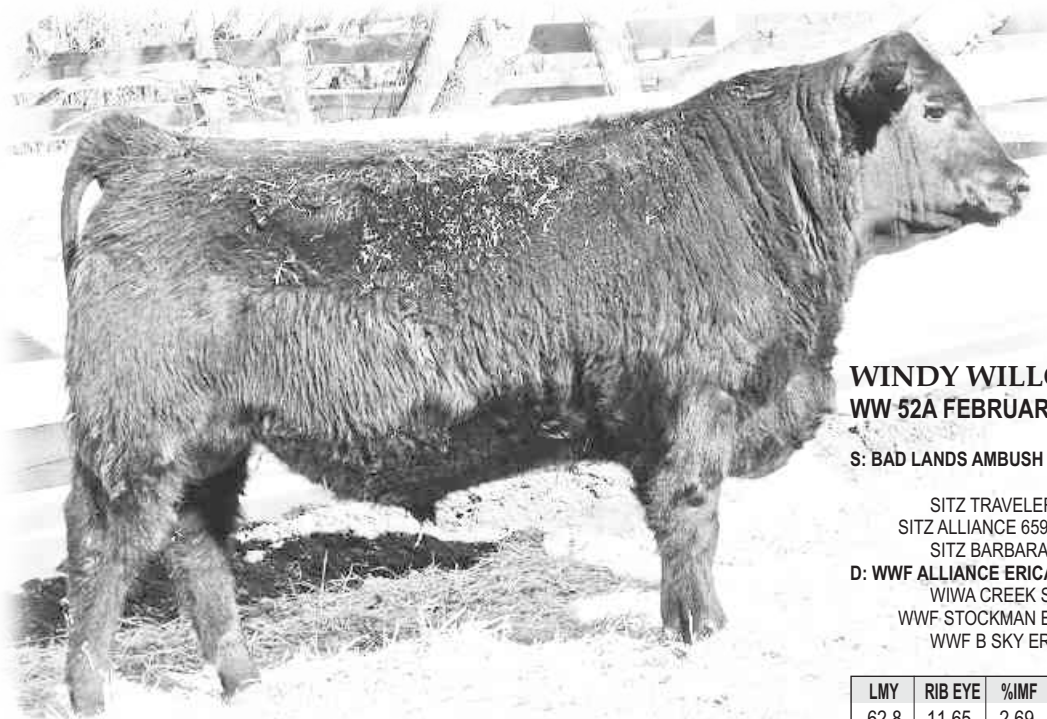


BAD LANDS AMBUSH 45M
CDS 45M APRIL 07 2002 #1121064
BW: 77LBS. ADJ 205 DAY WT: 636 LBS.
ADJ 365 DAY WT: 1145 LBS.

BANDOLIER ESTON DURNES 42B
 PARAMONT AMBUSH 2172
 EWS MISS BURGESS 1720
S: HIGH VALLEY 4C6 AMBUSH
 RITO 9Q4 OF 1H1 SASQUATCH
 HIGH VALLEY GLORIA 1Q2
 J NICHOLS GLORIA Y185
 LEACHMAN PARAGON
 BON VIEW PARAGON 2108
 BON VIEW QUEEN M 1084
D: BAD LANDS BLACKLASS 808H
 GDAR SVF CHIEF
 BAD LANDS BLACKLASS 633F
 BAD LANDS BLACKLASS 13'93

BW	WW	YW	MILK	REA	%IMF	FAT
+1.5	+38	+54	+10	-0.28	+0.08	+0.014

Ambush is one of the most influential bulls ever used in our program. He was thick, smooth and correct and an extremely fertile bull with an excellent disposition. His full sister at Bad Lands has near perfect teat and udder quality and has been named an Elite Dam by the CAA. Ambush has been used on heifers at Windy Willows with all births being unassisted. His progeny exhibit tremendous thickness, capacity and performance. Two sons have topped previous bull sales and a daughter was our high selling heifer in the 2005 Grasslands Sale. His daughters are making exceptional cows with beautiful udders and have become the backbone of our cowherd. Ambush daughters can be counted on to produce some of our best bulls each year. Northern View Quantum 83W and Windy Willows Upper Cut 44Y have both seen extensive service at Windy Willows and both are out of Ambush daughters. Ambush is gone now but we continue to use him by AI.



WINDY WILLOWS AMBUSH 52A
WW 52A FEBRUARY 23 2013 #1747548

S: BAD LANDS AMBUSH 45M

SITZ TRAVELER 8180
 SITZ ALLIANCE 6595
 SITZ BARBARAMERE JET 2698
D: WWF ALLIANCE ERICA 78M
 WIWA CREEK STOCKMAN 26'95
 WWF STOCKMAN ERICA 71H
 WWF B SKY ERICA 35C

LMY	RIB EYE	%IMF	RIB FAT	RUMP FAT
62.8	11.65	2.69	0.21	0.28

	WTs	EPDs
BW	84	+2.8
WW	702	+44
YW	1246	+71
MILK	-	+17
AGE DAM	11	-
TEST ADG	3.40	-
CALVING EASE		

37

FEATURE: Ambush sons have topped two of our bull sales, but this calf may just be the best one yet. Ambush 52A is an imposing individual with muscle, capacity and a classic Angus head. He was the second highest indexing calf at weaning at 116 and posted a yearling index of 108. His dam, Erica 78M, is one of the very best cows in the WWF herd. She has produced several feature bulls in past sales to Duncan Guilloux, Wolfater Ranch Ltd., GAGC Farms Ltd., and a full brother to 52A to 7Z Ranch Ltd. She is an awesome cow with a beautiful udder and is destined for our ET program. If you are looking for a stand up herd bull with a pedigree different from the mainstream, Ambush 52A may be the ticket.

WINDY WILLOWS AMBUSH 95A
WW 95A MARCH 05 2013 #1747581

38

S: BAD LANDS AMBUSH 45M

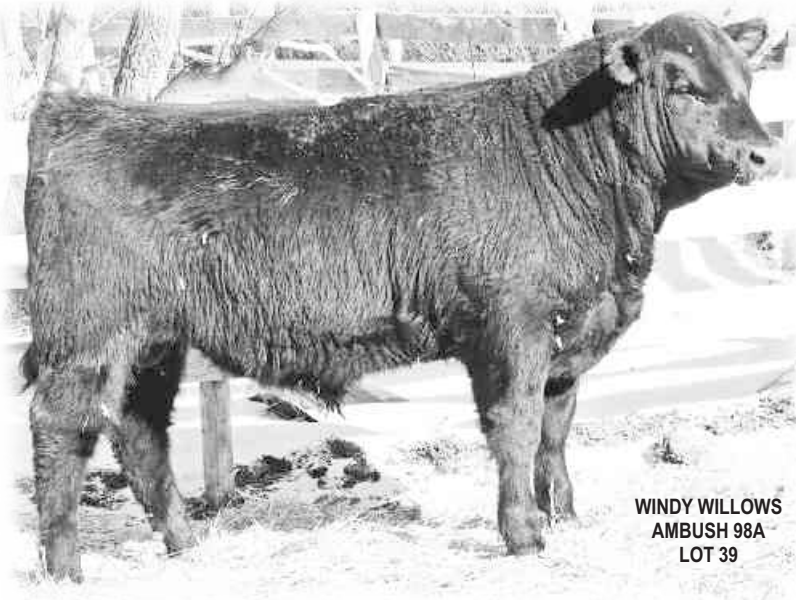
PAPA EQUATOR 2928 AMF NHF
 YOUNG DALE HERCULES 810H
 YOUNG DALE GRACE 16C

D: WWF HERCULES QUEEN 90L
 CENTURY TOUCHSTONE 131
 WWF TOUCHSTONE QUEEN 12E
 WWF LNDMARK QUEEN MOTHER 1U

LMY	RIB EYE	%IMF	RIB FAT	RUMP FAT
58.8	11.89	4.66	0.37	0.34

	WTs	EPDs
BW	84	+2.2
WW	649	+38
YW	1138	+59
MILK	-	+11
AGE DAM	12	-
TEST ADG	3.05	-

The dam, Queen 90L is one of the last of the Hercules daughters we have.



**WINDY WILLOWS
 AMBUSH 98A
 LOT 39**



HILLARY'S AGRIBITION PURCHASE

WINDY WILLOWS AMBUSH 98A
WW 98A MARCH 06 2013 #1747584

39

S: BAD LANDS AMBUSH 45M

LEACHMAN RIGHT TIME
 BAD LANDS RIGHT TIME 78N
 BAD LANDS DUCHESS 809H

D: WWF RIGHT TIME BLACKBIRD 104T
 V D A R NEW TREND 315
 WWF TRENDY BLACKBIRD 17H
 WWF FORTUNE BLACKBIRD 1E

LMY	RIB EYE	%IMF	RIB FAT	RUMP FAT
62.7	12.51	1.61	0.24	0.21

	WTs	EPDs
BW	94	+3.5
WW	635	+45
YW	1119	+68
MILK	-	+14
AGE DAM	6	-
TEST ADG	3.02	-

A maternal sister has been retained in the herd and a brother was selected by Ben Unger.

REFERENCE SIRE



MJLC BOOMER 19Y
MJLC 19Y JANUARY 9 2011 #1652716
BW: 90LBS. ADJ 205 DAY WT: 755LBS.
ADJ 365 DAY WT: 1313LBS.

SANDY BAR ADVANTAGE 43M
 HF KODIAK 5R
 WILBAR RUBY 955N
S: GEIS BALOO 13'08
 NORTH FORK ADVISOR 9163
 KBJ QUEEN 461L
 KBJ QUEEN 203F

C A R IDEAL 650
 CAR IDEAL 061
 C A R MISS VIKING 601
D: MJLC CATHERINE 70M
 LOST LAKE ICEBERG 3438
 CAR CATHERINE 028
 C A R REAL LADY 681

BW	WW	YW	MILK	REA	%IMF	FAT
+2.3	+32	+60	+22	-	-	-

We had a herd bull go down early in 2012, and needed a bull with some power to replace him. Rob recommended this son of Baloo. Boomer is a masculine, long bodied bull with a big, powerful hip. He is loaded with muscle yet he remains smooth in his shoulder and straight in his lines. He is a grandson of our Catherine cow. It sure is neat when you find a bull that you really like and he goes back to one of your own cows. We are excited about Boomer's breeding ability after seeing his first calves.



WINDY WILLOWS BOOMER 138A WW 138A MARCH 14 2013 #1763959

40

S: MJLC BOOMER 19Y

CRESCENT CREEK ALLIANCE 29N
CRESCENT CREEK IRON MAN 93R
CRESCENT CREEK DANA 35M

D: WWF IRON BELLE 93T

KMA FOURTRAX 5134
KENOSSEE PARK BELLE 5K
KENOSSEE PARK BELLE 71H

LMY	RIB EYE	%IMF	RIB FAT	RUMP FAT
62.1	13.38	3.35	0.29	0.36

	WTs	EPDs
BW	94	+2.8
WW	713	+49
YW	1268	+80
MILK	-	+22
AGE DAM	6	-
TEST ADG	3.47	-

FEATURE: Boomer 138A has been easy to find all summer. He is long bodied just like his sire and has the same big hip. He was the second highest indexing calf at weaning at 116 and posted a yearling index of 110. His dam is one of our great producing Iron Man daughters, sure wish we had more of them. If you would like a bull with length and a little more frame and an excellent disposition, he is the one.



WINDY WILLOWS BOOMER 162A WWHS 162A MARCH 22 2013 #1773775

41

S: MJLC BOOMER 19Y

BOYD ON TARGET 1083
STEVENSON MONEYMAKER R185
STEVENSON CLOVA PRIDE L888

D: MERIT HEROINE 8718

MERIT DIESEL 8041
MERIT HEROINE 2066
MERIT HEROINE 5052

LMY	RIB EYE	%IMF	RIB FAT	RUMP FAT
63.0	13.83	3.39	0.27	0.43

	WTs	EPDs
BW	80	+2.5
WW	560	+39
YW	1067	+72
MILK	-	+18
AGE DAM	5	-
TEST ADG	3.17	-
CALVING EASE		

Boomer 162A is Hillary's bull out of her very first 4H heifer.

WINDY WILLOWS STANDARD 171A WW 171A MARCH 24 2013 17773915

42

LCC NEW STANDARD
HRH NEW STD 9M 1S
FAQ ERICA 17G 9M
S: KBJ ABOVE STANDARD 78X
S A V PEACEMAKER 3179
HRH POLLYANNA 6R 2U
HRH TSC FOREMAN POLLY 22N 6R

CRESCENT CREEK ALLIANCE 29N
CRESCENT CREEK IRON MAN 93R
CRESCENT CREEK DANA 35M

D: WWF IRON JENNIFER 111T

VERMILION DATELINE 7078
WWF VRD JENNIFER 31N
WWF VENTURE JENNIFER 34J

LMY	RIB EYE	%IMF	RIB FAT	RUMP FAT
62.2	11.87	3.28	0.24	0.31

	WTs	EPDs
BW	74	+0.3
WW	650	+50
YW	1067	+84
MILK	-	+23
AGE DAM	6	-
TEST ADG	2.61	-
CALVING EASE ELITE		

WINDY WILLOWS
BOOMER 162A
LOT 41

A smooth made bull that should work well on heifers.

REFERENCE SIRE

EVERBLACK KODIAK 1W

JJG 1W JANUARY 11 2009 #1536875

BW: 70LBS. ADJ 205 DAY WT: LBS.

ADJ 365 DAY WT: LBS.

TC ADVANTAGE
SANDY BAR ADVANTAGE 43M
SANDY BAR JEMINA 44K
S: HF KODIAK 5R
VERMILION YELLOWSTONE
WILBAR RUBY 955N
WILBAR RUBY 161J

SITZ HERITAGE 10709
BEVERLY HILLS CENTENNIAL 503
H A BELETTA 0219
D: SOO LINE ERROLLINE 7185
V D A R NEW TREND 315
WWF TRENDY ERROLLINE 34L
ROSEBANK ERROLLINE 9J



Kodiak 1W came to Windy Willows as the top selling bull in the 2010 Everblack Common Sense Bull Sale. He is a ¾ brother to the Kodiak 9194 bull at Genex. We were looking for a calving ease bull with thickness and eye appeal and we found him in 1W. He was used on heifers that first year and he did a super job. The Kodiak sons are heavily muscled with lots of hair and a very attractive pattern. We lost him to a shoulder injury and we don't have semen so these will be the last of his sons and that is very unfortunate!

BW	WW	YW	MILK	REA	%IMF	FAT
-0.5	+39	+84	+20	-0.04	+0.28	+0.006



WINDY WILLOWS KODIAK 145A

WW 145A MARCH 17 2013 #1747408

S: EVERBLACK KODIAK 1W

WANDERING CRK DYNASTY JRM 2F
SILVER DOME DYNASTY 19T
SILVER DOME OAKLEAF 119L

D: LOOKOUT BLACKCAP 74W
LOOKOUT PACESETTER 258M
LOOKOUT BLACKCAP 123S
WAVENY BLACKCAP 8L

LMY	RIB EYE	%IMF	RIB FAT	RUMP FAT
60.9	12.59	3.24	0.31	0.38

	WTs	EPDs
BW	86	+2.4
WW	661	+38
YW	1168	+70
MILK	-	+19
AGE DAM	4	-
TEST ADG	3.17	-

43

FEATURE: Kodiak 145A is a very thick and stylish bull with a great coat of hair, one of Kodiak 1W's best! He will add top and eye appeal to his calves. His dam was our pick of the two year olds at the Lookout Dispersal.



WINDY WILLOWS KODIAK 150A

WW 150A MARCH 18 2013 #1747410

S: EVERBLACK KODIAK 1W

HIGH VALLEY 4C6 AMBUSH
BAD LANDS AMBUSH 45M
BAD LANDS BLACKCLASS 808H

D: WWF AMBUSH GEORGINA 146W
YOUNG DALE HERCULES 810H
WWF HERCULES GEORGINA 93L
WWF FORTUNE GEORGINA 58J

LMY	RIB EYE	%IMF	RIB FAT	RUMP FAT
60.9	11.89	3.71	0.29	0.25

	WTs	EPDs
BW	86	+1.7
WW	576	+36
YW	1143	+69
MILK	-	+18
AGE DAM	4	-
TEST ADG	3.54	-
CALVING EASE		

44

When you have seen a few of these Kodiaks you can pick them out, strong hips, good hair and style. This bull had a yearling index of 112, 5th out of 60 bulls. He has a maternal sister at Border Butte Angus and another has been retained.



WINDY WILLOWS KODIAK 165A
WW 165A MARCH 23 2013 #1747415

45

S: EVERBLACK KODIAK 1W

CRESCENT CREEK ALLIANCE 29N
 CRESCENT CREEK TROUBADOUR 34U
 CRESCENT CREEK DUCHESS 51M

D: WWF TROUBADOUR JENNIFER 90X
 STEVENSON BRUNO 561G
 WWF BRUNO JENNIFER 55N
 WWF STOCKMAN JENNIFER 104H

LMY	RIB EYE	%IMF	RIB FAT	RUMP FAT
62.3	12.05	4.16	0.24	0.25

	WTs	EPDs
BW	94	+4.5
WW	609	+36
YW	1122	+74
MILK	-	+22
AGE DAM	3	-
TEST ADG	3.20	-

A long bodied calf with excellent hair. His dam, Jennifer 90X, is one of those cows that makes you stop and look when you see her in the pasture.

WINDY WILLOWS KODIAK 181A
WW 181A MARCH 26 2013 #1747422

46

S: EVERBLACK KODIAK 1W

SITZ TRAVELER 8180
 S A V FINAL ANSWER 0035
 S A V EMULOUS 8145

D: WWF FA ERICA 85W
 CRESCENT CREEK IRON MAN 93R
 WWF IRON ERICA 31T
 ROCKING FOUR ERICA 5K

LMY	RIB EYE	%IMF	RIB FAT	RUMP FAT
61.3	12.14	4.29	0.28	0.21

	WTs	EPDs
BW	76	+0.2
WW	666	+47
YW	1181	+88
MILK	-	+22
AGE DAM	4	-
TEST ADG	3.22	-
CALVING EASE		

A full brother sold to Craig & Lori Knox in our 2012 sale and another brother is working for Stormy Valley. His dam is a really good Final Answer daughter.



WINDY WILLOWS KODIAK 174A
WW 174A MARCH 24 2013 #1773916

47

S: EVERBLACK KODIAK 1W

SITZ TRAVELER 8180
 S A V FINAL ANSWER 0035
 S A V EMULOUS 8145

D: WWF FA BARBARA 70X
 MINBURN MAIN STREET 146S
 WWF MN STREET BARBARA 81U
 WWF HERCULES BARBARA 152N

LMY	RIB EYE	%IMF	RIB FAT	RUMP FAT
59.0	12.46	3.74	0.38	0.25

	WTs	EPDs
BW	82	+1.6
WW	602	+49
YW	1112	+92
MILK	-	+21
AGE DAM	3	-
TEST ADG	3.19	-
CALVING EASE		

This good bull has a long body, strong hip and a great coat of hair. Yearling index of 115, 1st out of 12 bulls.





WINDY WILLOWS CEDAR RIDGE 17A WW 17A FEBRUARY 06 2013 #1747521

48

C H QUANTUM 6247
COLE CREEK BLACK CEDAR 46P
COLE CREEK CLOVA JUANADA 67
S: COLE CREEK CEDAR RIDGE 1V
HBR ENCORE 0544
COLE CREEK CLOVANADA 49S
COLE CREEK CLOVANADA 709

HF KODIAK 5R
EVERBLACK KODIAK 1W
SOO LINE ERROLLINE 7185
D: WWF KODIAK BELLE 40Y
S A V FINAL ANSWER 0035
WWF FA BELLE 54W
WWF IRON BELLE 93T

	WTs	EPDs
BW	74	-0.3
WW	607	+46
YW	1037	+84
MILK	-	+30
AGE DAM	2	-
TEST ADG	2.70	-
CALVING EASE ELITE		

LMY	RIB EYE	%IMF	RIB FAT	RUMP FAT
63.4	12.42	3.23	0.21	0.16

We decided to sample the Genex bull, Cedar Ridge on heifers and he worked really well for us. We found these cattle to be very moderate and easy fleshing.

WINDY WILLOWS CEDAR RIDGE 71A WW 71A MARCH 1 2013 #1747565

49

C H QUANTUM 6247
COLE CREEK BLACK CEDAR 46P
COLE CREEK CLOVA JUANADA 67
S: COLE CREEK CEDAR RIDGE 1V
HBR ENCORE 0544
COLE CREEK CLOVANADA 49S
COLE CREEK CLOVANADA 709

NORTHERN VIEW QUANTUM 86P
NORTHERN VIEW QUANTUM 83W
WWF AMBUSH BELLE 166P
D: WWF QUANTUM JENNIFER 154Y
BAD LANDS AMBUSH 45M
WWF AMBUSH JENNIFER 134T
WWF QUANTUM JENNIFER 102N

	WTs	EPDs
BW	71	+0.6
WW	631	+43
YW	1098	+73
MILK	-	+29
AGE DAM	2	-
TEST ADG	2.92	-
CALVING EASE ELITE		

LMY	RIB EYE	%IMF	RIB FAT	RUMP FAT
62.1	12.72	2.75	0.27	0.26

The Jennifer family is one of our best. The grand dam produced our high seller a few years ago.

WINDY WILLOWS WISDOM 114A WW 114A MARCH 9 2013 #1773925

50

CONNEALY LEAD ON
CONNEALY ONWARD
ALTUNE OF CONANGA 6104
S: SITZ WISDOM 481T
SITZ NEW DESIGN 349M
SITZ ELLUNA ELITE 94P
SITZ ELLUNA ELITE 163M

SITZ TRAVELER 8180
SITZ ALLIANCE 6595
SITZ BARBARAMERE JET 2698
D: ER EISA EVERGREEN P573
S A F FOCUS OF E R
ER EISA EVERGREEN K245
SITZ EISA EVERGREEN 791

	WTs	EPDs
BW	72	+0.5
WW	625	+45
YW	1055	+82
MILK	-	+25
AGE DAM	9	-
TEST ADG	2.57	-
CALVING EASE		

LMY	RIB EYE	%IMF	RIB FAT	RUMP FAT
59.4	13.63	2.77	0.40	0.29

Here is a Wisdom son that came out of one of our KG cows. Wisdom is a dominant sire in the KG program.

WINDY WILLOWS RIGHT TIME 120A WW 120A MARCH 11 2013 #1747392

51

N BAR EMULATION EXT
LEACHMAN RIGHT TIME
LEACHMAN ERICA 0025
S: BAD LANDS RIGHT TIME 78N
R R DAQUANTAE 789E
BAD LANDS DUCHESS 809H
BAD LANDS DUCHESS 622F

MINBURN MAIN EVENT 181N
MINBURN MAIN STREET 146S
MINBURN KEPSAKE 16J
D: WWF MN STREET BLACKBIRD 173U
YOUNG DALE HERCULES 810H
WWF HERCULES BLACKBIRD 98K
WWF STOCKMAN BLACKBIRD 132H

	WTs	EPDs
BW	76	+2.0
WW	569	+44
YW	1023	+83
MILK	-	+22
AGE DAM	5	-
TEST ADG	2.84	-
CALVING EASE		

LMY	RIB EYE	%IMF	RIB FAT	RUMP FAT
63.1	11.76	2.26	0.20	0.25

We try to breed a few cows to Right Time 78N every year in an attempt to obtain more daughters, as we have tremendous respect for their producing ability. Sometimes we get bulls and thats not bad either!



KBJ ABOVE STANDARD 78X

KBJ 78X JANUARY 26 2010 1585368

BW: 84LBS. ADJ 205 DAY WT: 829 LBS.

ADJ 365 DAY WT: 1387 LBS.

BON VIEW NEW DESIGN 1407

LCC NEW STANDARD

LCC SUNSET K3118

S: HRH NEW STD 9M 1S

DA ES RO TWISTER 0627

FAQ ERICA 17G 9M

FAQ ERICA 17G

BON VIEW NEW DESIGN 878

S A V PEACEMAKER 3179

S A V ELBA 1094

D: HRH POLLYANNA 6R 2U

TC FOREMAN 016

HRH TSC FOREMAN POLLY 22N 6R

L'I'L POLLYANNA 22N

BW	WW	YW	MILK	REA	%IMF	FAT
+1.5	+48	+92	+25	+0.38	+0.26	+0.011

We purchased 1/2 interest and possession in this very popular lead off bull at KBJ's 2011 bull sale for \$16,000. He is a long, smooth made bull and he calves extremely easily. He has left some excellent sons both here and at KBJ.



WINDY WILLOWS
STANDARD 205A
LOT 52

WINDY WILLOWS STANDARD 205A

WW 205A APRIL 02 2013 #1747430

52

S: KBJ ABOVE STANDARD 78X

WINDY WILLOWS CINCHA 38N

WINDY WILLOWS CINCHA 112R

WWF QUANTUM BARBARA 96M

D: WWF CINCHA ERICA 192T

BAD LANDS QUANTUM 016K

WWF QUANTUM ERICA 163N

WWF BRUNO ERICA 95L

LMY	RIB EYE	%IMF	RIB FAT	RUMP FAT
-	-	-	-	-

	WTs	EPDs
BW	90	+2.0
WW	638	+41
YW	1134	+79
MILK	-	+22
AGE DAM	6	-
TEST ADG	3.10	-

This young calf is very attractive, long bodied, deep, ribbed and very attractive. I think he will grow into a really good bull. The Yukes have a maternal brother.

WINDY WILLOWS STANDARD 214A

WW 214A APRIL 04 2013 #1747435

53

S: KBJ ABOVE STANDARD 78X

MINBURN MAIN EVENT 181N

MINBURN MAIN STREET 146S

MINBURN KEEPSAKE 16J

D: WWF MN STREET BLACKBIRD 50U

V D A R NEW TREND 315

WWF TRENDY BLACKBIRD 17H

WWF FORTUNE BLACKBIRD 1E

LMY	RIB EYE	%IMF	RIB FAT	RUMP FAT
-	-	-	-	-

	WTs	EPDs
BW	84	+3.6
WW	658	+44
YW	1161	+85
MILK	-	+24
AGE DAM	5	-
TEST ADG	3.15	-

A maternal brother is working for Rick Bender.

WINDY WILLOWS STANDARD 219A

WW 219A APRIL 08 2013 #1747439

54

S: KBJ ABOVE STANDARD 78X

TC STOCKMAN 365

SDTRK GET YA SUM

JWS ANNIES OSCAR

D: WWF SUM ERICA 140N

MINERTS FORTUNE 2000

WWF FORTUNE ERICA 74J

WINDY WILLOWS ERICA 88B

LMY	RIB EYE	%IMF	RIB FAT	RUMP FAT
-	-	-	-	-

	WTs	EPDs
BW	78	+0.7
WW	638	+44
YW	1123	+78
MILK	-	+19
AGE DAM	10	-
TEST ADG	3.26	-

CALVING EASE ELITE

The youngest bull in the sale. These 3 April calves by Above Standard just stood out over the other April calves and were able to compete with their older pen mates. They are survivors! The dam of this one, Erica 140N is an awesome, deep bodied cow that does a great job.

RED ANGUS BULLS

RED DWAJO GLADIATOR 32L

DJE 32L FEBRUARY 01 2001 #1069003

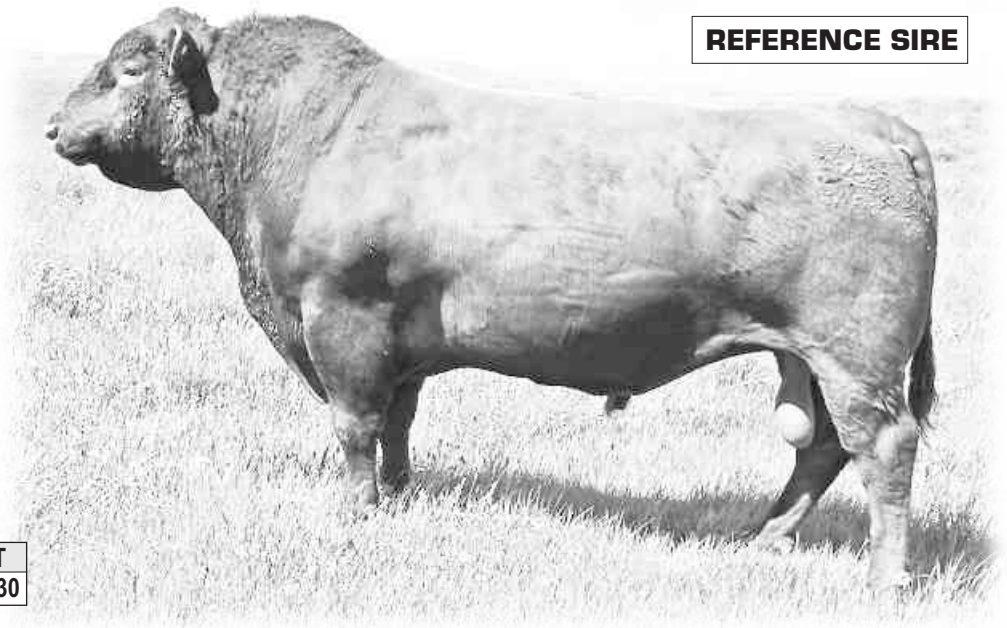
BW: 84LBS. ADJ 205 DAY WT: 824 LBS.

ADJ 365 DAY WT: 1431 LBS.

RED LCC HEAVEN OR BUST1000B
RED GLACIER MARIAS 548
RED GLACIER REBALAS
S: RED BLUE SPRUCE ZOOK 50H
RED BLUE SPRUCE DYNAMIC 26X
RED BLUE SPRUCE SIENA 26A
RED BLUE SPRUCE SIENA 84Y

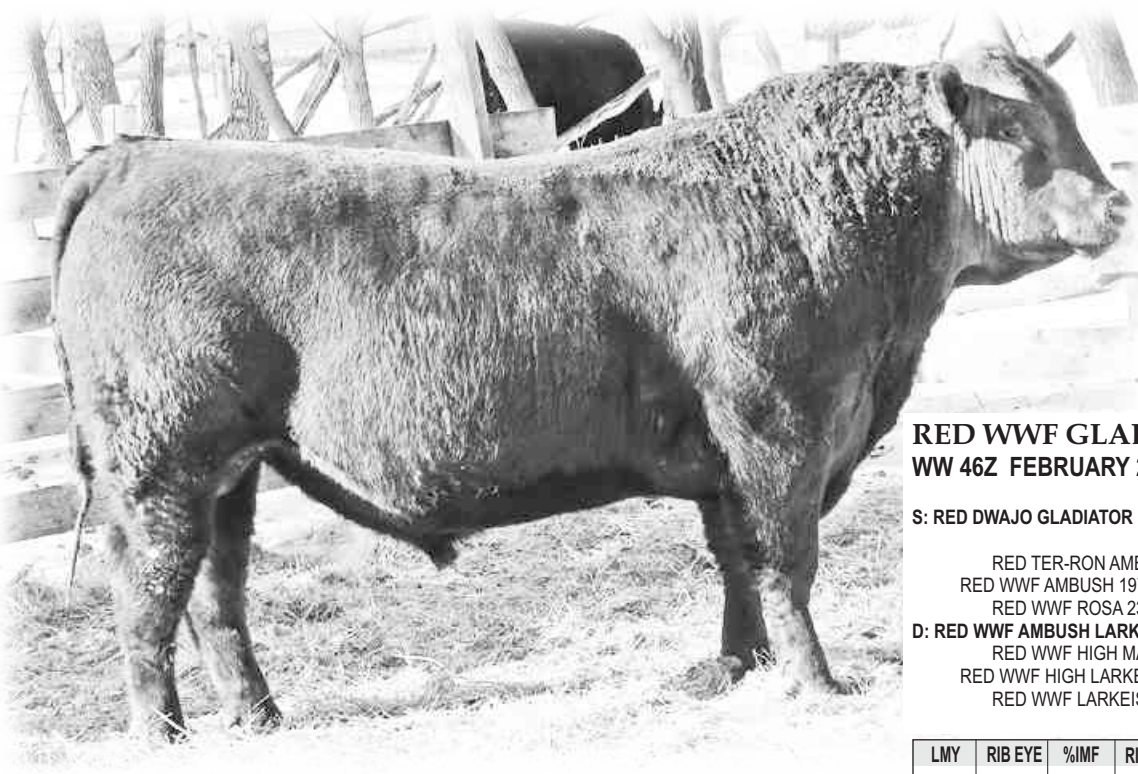
RED PREMIER PATRIOT 16
RED GEIS PRIME RIB 411
RED GEIS KURUBA 592
D: RED DWAJO SUPERIOR 4H
RED BRETON TOP 12C
RED BRETON SUPERIOR 39F
RED MC DOUGALL SUPERIOR 15W

BW	WW	YW	MILK	REA	%IMF	FAT
-4.5	+47	+85	+21	+0.32	+0.74	+0.030



REFERENCE SIRE

We purchased some semen from this bull because we believe him to be one of the outstanding Red Angus bulls for calving ease and quality females. His daughters at the Soo Line Dispersal were awesome and among the highest sellers.



RED WWF GLADIATOR 46Z

WW 46Z FEBRUARY 23 2012 #1688176

S: RED DWAJO GLADIATOR 32L

RED TER-RON AMBUSH 404P
RED WWF AMBUSH 197S
RED WWF ROSA 23M
D: RED WWF AMBUSH LARKEISA 46U
RED WWF HIGH MARK 5J
RED WWF HIGH LARKEISA 174N
RED WWF LARKEISA 33H

LMY	RIB EYE	%IMF	RIB FAT	RUMP FAT
-	-	-	-	-

	WTs	EPDs
BW	92	-0.1
WW	592	+61
YW	1103	+104
MILK	-	+17
AGE DAM	4	-
TEST ADG	-	-
CALVING EASE		

55

The only two year old bull in the sale and he is a good one! We had retained him as a backup to our newly acquired red herd sire, Red Red-Rock Provincial 583Z. Fortunately we didn't need to use him, but it may not have been so bad if we had! This bull just gets better and better. His dam was one of the most eye appealing cows in our red herd.



RED WWF GLADIATOR 31A WW 31A FEBRUARY 14 2013 #1747531

56

S: RED DWAJO GLADIATOR 32L

RED TER-RON MAMBO 28K
RED TER-RON AMBUSH 404P
RED HB CRESTA 104G

D: RED WWF AMBUSH CLARIT 57U
RED LCHMN GRND CANYON 1244G
RED WWF CLARIT 25M OSF
RED BVR CLARIT 76D

LMY	RIB EYE	%IMF	RIB FAT	RUMP FAT
64.7	12.72	3.84	0.17	0.17

	WTs	EPDs
BW	62	-2.6
WW	530	+56
YW	1004	+96
MILK	-	+15
AGE DAM	5	-
TEST ADG	2.96	-
CALVING EASE ELITE		

This bull would be an excellent choice to use on heifers.



HILLARY WITH STEER AT MEDICINE HAT

RED WWF GLADIATOR 136A WW 136A MARCH 14 2013 #1747404

57

S: RED DWAJO GLADIATOR 32L

RED GLACIER CUB 446
RED MLK CRK CUB 722
RED MLK CRK LAKOTA 152-HOBO

D: RED WWF CUB QUEEN 83R
RED BVR RAB-STAR 56C
RED WWF QUEEN 5G
RED COCKBURN QUEEN 14

LMY	RIB EYE	%IMF	RIB FAT	RUMP FAT
65.3	12.90	4.47	0.15	0.22

	WTs	EPDs
BW	86	-1.1
WW	563	+51
YW	1025	+85
MILK	-	+15
AGE DAM	8	-
TEST ADG	2.89	-
CALVING EASE		

Another good heifer bull. Maternal brother sold to the PFRA.

RED WWF AMBUSH 197S WW 197S MARCH 27 2006 #1350260 BW: 96LBS. ADJ 205 DAY WT: 766LBS. ADJ 365 DAY WT: 1463LBS.

RED YY RED KNIGHT 640F
RED TER-RON MAMBO 28K
RED ALDER ABG STAR DUST 8G
S: RED TER-RON AMBUSH 404P
RED LCHMN NO EQUAL 1174D
RED HB CRESTA 104G
RED TOP CRESTA 51C

RED LMAN KING ROB 8621
RED MESSMER RED VISION 9963
RED MESSMER JENNA 9603
D: RED WWF ROSA 23M
RED WWF LOGAN 12G
RED WWF ROSA 125K
RED ALALTA ACRES ROSA 55B

BW	WW	YW	MILK	REA	%IMF	FAT
+4.7	+92	+152	+10	+0.31	+0.56	-0.020



REFERENCE SIRE

One of the very best red bulls we have ever raised. He had phenomenal performance and scanned very high for both ribeye area and %IMF (marbling). He attracted a lot of interest from commercial producers who finished their cattle for slaughter and sold as the high seller that year to Jason Dean. We were fortunate to have been able to secure some semen and still use some each year as we have not found a bull that can match him for performance and carcass traits.

58

RED WWF AMBUSH 67A

WW 67A FEBRUARY 28 2013 #1747561

S: RED WWF AMBUSH 197S

RED BAR-E-L APPROVAL 4L
RED HOWE MR APPROVAL 62T
RED HOWE MS MAT 216N

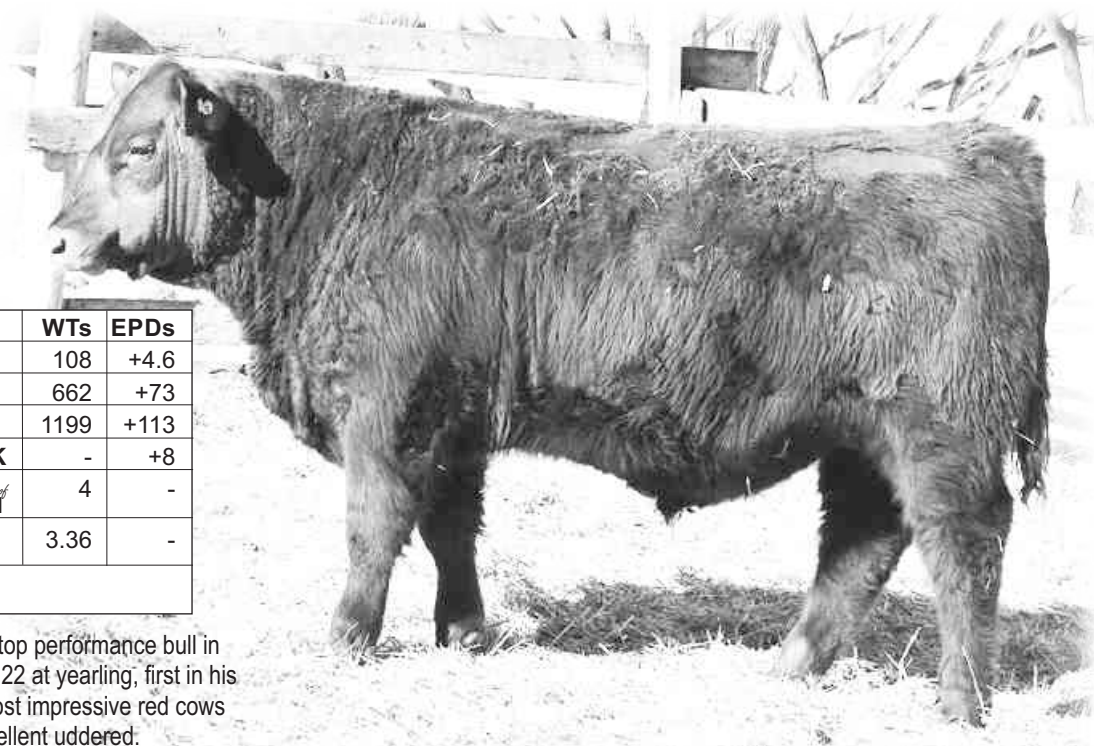
D: RED RC CRESTON 91W

RED FLYING K PATRIOT 16B
RED T-S MISS CRESTON 31J
RED SSS EMILY 173C

LMY	RIB EYE	%IMF	RIB FAT	RUMP FAT
65.9	14.93	4.67	0.19	0.22

	WTs	EPDs
BW	108	+4.6
WW	662	+73
YW	1199	+113
MILK	-	+8
AGE DAM	4	-
TEST ADG	3.36	-

FEATURE: Red Ambush 67A is easily the top performance bull in our red herd indexing 117 at weaning and 122 at yearling, first in his group both times. His dam is one of the most impressive red cows we own, wide topped, deep ribbed and excellent uddered.



RED WWF AMBUSH 73A

WW 73A MARCH 01 2013 #1747567

S: RED WWF AMBUSH 197S

RED D-BAR DESIGN 11L
RED D-BAR NT DESIGN 32N
RED TOP LINE SOXRO 2K

D: RED D-BAR MARTA 17U

RED D-BAR VOYAGER
RED KARLEN MARTA 13K
RED MARTA CYCLONE LASS 43X

LMY	RIB EYE	%IMF	RIB FAT	RUMP FAT
62.6	11.82	4.19	0.22	0.26

	WTs	EPDs
BW	73	+0.5
WW	602	+71
YW	948	+116
MILK	-	+13
AGE DAM	5	-
TEST ADG	2.16	-
CALVING EASE		

Ambush 73A boasts a very modest birth weight and great pre weaning performance as he indexed 111 at weaning, 4th out of 22 bulls. His dam was selected from the D Bar dispersal.

59

RED WWF DYNAMO 88A

WW 88A MARCH 02 2013 #1747577

RED FLYING K DYNAMO 22F
RED FLYING K DYNAMO 67K
RED FLYING K BARONNESS 72G
S: RED U-2 DYNAMO 7021T
RED LCC MAJOR LEAGUE A502M
RED U-2 ANEXA 549R
RED U-2 ANEXA 368N

RIVERCREST GREAT NORTHERN 35G
RED KEN GREAT NORTHERN 7M
RED KEN MISS PEMA 8H

D: RED WWF SOAPY 9T

RED LPC SUPER CHIEF 12Z
RED LPC SOAPY'S SUPER CHIEF 32
RED LPC DYNA SOAPY 4B

LMY	RIB EYE	%IMF	RIB FAT	RUMP FAT
63.9	14.34	2.09	0.25	0.29

We were impressed with the Dynamo progeny at U-2 and D Bar so we purchased some semen. This good calf would work on heifers and is good enough for cows. Yearling index of 115, 2nd out of 13 bulls. Russ Coward has a maternal sister doing a good job for him.

60

	WTs	EPDs
BW	88	-0.2
WW	558	+42
YW	1067	+68
MILK	-	+14
AGE DAM	6	-
TEST ADG	3.18	-
CALVING EASE		



RED WWF
DYNAMO 88A
LOT 60
(BOTH PHOTOS)



RED WWF WIZARD 126A
WWWS 126A MARCH 12 2013 #1764580

61

RED LJC MISSION STATEMENT P27
 RED FLYING K MISSION 71T
 RED FLYING K MS CHIEF 4J
S: RED FLYING K WIZARD 7W
 RED FLYING K RAMBO 8P
 RED FLYING K SHIELA 56S
 RED FLYING K MS DYNAMO 102P

RED GOLD-BAR LEDGER J 1081L
 RED FLYING S JACKPOT 34N
 RED HOWE MS LASSIE DDH 114F
D: RED S- BUSHY 33T
 RED STOCKMAN OF CUDLOBE 12L
 RED SIX MILE MS BUSHMAN 996N
 RED SIX MILE MS. BUSHMAN 84G

LMY	RIB EYE	%IMF	RIB FAT	RUMP FAT
62.2	11.28	4.17	0.22	0.26

Our daughter Whitney's bull and a son of Wizard, the bull we purchased from Flying K for his perfect feet.

	WTs	EPDs
BW	90	+1.7
WW	560	+51
YW	1087	+80
MILK	-	+14
AGE DAM	6	-
TEST ADG	2.77	-

RED WWF WIZARD 133A
WW 133A MARCH 13 2013 #1747402

62

RED LJC MISSION STATEMENT P27
 RED FLYING K MISSION 71T
 RED FLYING K MS CHIEF 4J
S: RED FLYING K WIZARD 7W
 RED FLYING K RAMBO 8P
 RED FLYING K SHIELA 56S
 RED FLYING K MS DYNAMO 102P

RED GLACIER CHATEAU 744
 RED 4L SUPER VISION R2292
 RED 4L MR RAMBO R709
D: RED WWF SUPERVISION QUEEN 34W
 RED LCC MAJOR LEAGUE A502M
 RED WWF ML QUEEN 12T
 RED WWF CUB QUEEN 83R

LMY	RIB EYE	%IMF	RIB FAT	RUMP FAT
64.5	13.18	2.99	0.19	0.19

Another good choice for breeding heifers, this bull has the lowest Red BW EPD in the sale.

	WTs	EPDs
BW	66	-2.8
WW	608	+52
YW	1011	+81
MILK	-	+16
AGE DAM	4	-
TEST ADG	2.52	-

CALVING EASE ELITE

OPEN HEIFERS

We are offering at the buyers option, one AI service to our exciting new sire, KG Focal Point 2013 with each heifer. Focal Point was the lead off bull and our pick of the 300 bulls in the KG Ranch Sale at Three Forks, Montana. He is thick, long, super sound and ranks in the top 2% of the breed for both low birth weight and yearling weight.

KG FOCAL POINT 2013

BW: 56 lbs
205 Day Wt Ratio: 109
365 Day Wt Ratio: 108

EPDs
BW: -1.7
WW: +62
YW: +108
MILK: +24





WWF IMPRINT BARBARA 140A
WW 140A MARCH 15 2013 #1747406

63

CONNEALY REFLECTION
 CONNEALY IMPRESSION
 PEARL PAMMY OF CONANGA
S: CONNEALY IMPRINT 8317
 G A R GRID MAKER
 ELLINA OF CONANGA 868
 ELIGENCE PLUS OF CONANGA

	WTs	EPDs
BW	84	+3.5
WW	579	+53
YW	-	+91
MILK	-	+21

KRUGERRAND OF DONAMERE 490
 SOUTHERN KRUGGERAND 16H
 SOUTHERN TALL PRIDE 72W
D: WWF KRUGERRAND BARBARA 144P
 MINERTS FORTUNE 2000
 WWF FORTUNE BARBARA 29K
 WWF TRAVELING BARBARA 41D

We decided to sample the Imprint bull from Genex and we didn't get any bulls but we sure do like the heifers. We wanted to offer one of the best ones and 140A fits that description very well. Sharp and stylish, she has a deep body and a brood cow presence about her. She has a weaning index of 114 2nd out of 44 heifers and her dam is designated Elite by the CAA.

WWF UPWARD ERICA 59A
WW 59A FEBRUARY 26 2013 #1747554

64

CONNEALY LEAD ON
 CONNEALY ONWARD
 ALTUNE OF CONANGA 6104
S: SITZ UPWARD 307R
 SITZ VALUE 7097
 SITZ HENRIETTA PRIDE 81M
 SITZ HENRIETTA PRIDE 1370

	WTs	EPDs
BW	88	+3.8
WW	542	+54
YW	-	+96
MILK	-	+31

SOUTHERN KRUGGERAND 16H
 WINDY WILLOWS KRUGERRAND 1M
 SOUTHERN PRIDE 45K
D: WWF KRUGERRAND ERICA 307T
 MFA STOCKMAN 87G
 WINDY WILLOWS ERICA 91J
 WIWA CREEK ERICA 2'88

Upward has done such a great job that we wanted to present an example of what he has done for us with daughters. Erica 59A is thick, deep and broody. If she follows the pattern of her sisters in production here she will make a top cow.



WWF UPWARD DUCHESS 37A
WW 37A FEBRUARY 17 2013 #1747536

65

CONNEALY LEAD ON
 CONNEALY ONWARD
 ALTUNE OF CONANGA 6104
S: SITZ UPWARD 307R
 SITZ VALUE 7097
 SITZ HENRIETTA PRIDE 81M
 SITZ HENRIETTA PRIDE 1370

	WTs	EPDs
BW	70	+1.5
WW	448	+45
YW	-	+79
MILK	-	+27

C H QUANTUM 3330
 BAD LANDS QUANTUM 066K
 BAD LANDS TINGE 23'92
D: BAD LANDS DUCHESS 5144R
 C H REVIVAL 104
 BAD LANDS DUCHESS 606F
 DOUBLE J DUCHESS 757W

Duchess 37A is another sharp fronted Upward daughter from a moderate framed cow that always gets it done. She has 2 sons working in top commercial herds.



WWF PIONEER BLACKBIRD 84A
WW 84A MARCH 2 2013 #1764575

66

SITZ TRAVELER 8180
 S A V FINAL ANSWER 0035
 S A V EMULOUS 8145
S: S A V PIONEER 7301
 BOYD NEW DAY 8005
 S A V BLACKBIRD 5297
 S A V BLACKBIRD 1082

	WTs	EPDs
BW	76	+1.5
WW	503	+49
YW	-	+86
MILK	-	+25

HIGH VALLEY 4C6 AMBUSH
 BAD LANDS AMBUSH 45M
 BAD LANDS BLACKLASS 808H
D: WWF AMBUSH BLACKBIRD 127T
 S A F FOCUS OF E R
 WWF FOCUS BLACKBIRD E 21L
 WWF CORNHUSKER BLACKBIRD E 36C

Pioneer heifers have been popular in our previous sales so we decided to offer another. This heifer is a maternal sister to the dam of our feature Lot 15 bull by Final Answer.



WWF BOOMER JENNIFER 155A
WW 155A MARCH 20 2013 #1763958

67

HF KODIAK 5R
 GEIS BALOO 13'08
 KBJ QUEEN 461L
S: MJLC BOOMER 19Y
 CAR IDEAL 061
 MJLC CATHERINE 70M
 CAR CATHERINE 028

	WTs	EPDs
BW	90	+4.8
WW	487	+35
YW	-	+67
MILK	-	+22

STEVENSON ROYCE 741C
 STEVENSON BRUNO 561G
 JRS ENCHANTRESS 16A
D: WWF BRUNO JENNIFER 55N
 WIWA CREEK STOCKMAN 26'95
 WWF STOCKMAN JENNIFER 104H
 WWF BRAD JENNIFER 97D

We don't have many but we want to offer at least one daughter of Boomer. We think she will make a great cow. Her mother certainly is.

WWF RIGHT TIME JENNIFER 77A
WW 77A MARCH 1 2013 #1747570

68

N BAR EMULATION EXT
 LEACHMAN RIGHT TIME
 LEACHMAN ERICA 0025
S: BAD LANDS RIGHT TIME 78N
 R R DAQUANTAE 789E
 BAD LANDS DUCHESS 809H
 BAD LANDS DUCHESS 622F

	WTs	EPDs
BW	84	+4.3
WW	559	+44
YW	-	+77
MILK	-	+20

KBJ CONQUOR ALL 447J
 KBJ KAZAM 654N
 HILL TOP LADY FANNY 8J
D: WWF KAZAM JENNIFER 146X
 VERMILION DATELINE 7078
 WWF VRD JENNIFER 31N
 WWF VENTURE JENNIFER 34J

We think very highly of our Right Time daughters so it was difficult to let one go since the bull is gone. This heifer has a maternal sister retained.

WWF STANDARD TIPTOP 200A
WW 200A MARCH 30 2013 #1747427

69

LCC NEW STANDARD
 HRH NEW STD 9M 1S
 FAQ ERICA 17G 9M
S: KBJ ABOVE STANDARD 78X
 S A V PEACEMAKER 3179
 HRH POLLYANNA 6R 2U
 HRH TSC FOREMAN POLLY 22N 6R

	WTs	EPDs
BW	74	+2.7
WW	488	+44
YW	-	+77
MILK	-	+14

O G L BATTLE CRY 427 128
 LLB BATTLE CRY 97L
 HARRON GEMSTONE 5G
D: KBJ TIPTOP 691N
 KBJ ROGUE II 203H
 KBJ TIPTOP 579K
 KBJ TIPTOP 425H

Above Standard was an awesome looking bull and he passed those good looks on to his daughters. The dam was a purchase from one of the KBJ Celebration sales and still looks youthful at 11 years of age.

WWF STANDARD SALLY 211A**WW 211A APRIL 3 2013 #1747432**

LCC NEW STANDARD
 HRH NEW STD 9M 1S
 FAQ ERICA 17G 9M
S: KBJ ABOVE STANDARD 78X
 S A V PEACEMAKER 3179
 HRH POLLYANNA 6R 2U
 HRH TSC FOREMAN POLLY 22N 6R

	WTs	EPDs
BW	66	+0.3
WW	524	+46
YW	-	+82
MILK	-	+23

CRESCENT CREEK ALLIANCE 29N
 CRESCENT CREEK IRON MAN 93R
 CRESCENT CREEK DANA 35M

D: WWF IRON SALLY 135T
 DOUBLE J TEX 234F
 FINELL TEX SALLY 6K
 FINELL SALLY 2H

This young heifer is a long, feminine Above Standard daughter from the Sally cow family that originated at Windy Willows. Merv Finell bought a really good Sally and her progeny were distributed via his dispersal.



NOTES

[illegible]

Windy Willows would like to thank the following businesses for their contribution towards our sale. We do business with all of them. They are good people, with excellent products and services. We encourage you to support them!

Oneil Desrosiers

RENOVATIONS EXPERT

306-677-2667

Hodgeville, SK

Jay's Pub & Grill

Jason & Heather Watson

Box 417, Hodgeville, SK

SOH 2B0

Phone 677-2277

Good times... Great food!

EMTA AGENCIES

INSURANCE AGENT

• CALF SHELTERS • COW CAMERAS • SELF-FEEDERS
• BALE FEEDERS, etc.

Earl & Marj Haubrich

306-677-2207

www.emtaagencies.ca

Hodgeville, SK

SOUTHWEST GENETICS

On farm service for ALL your semen and A.I. supplies

Your source for complete A.I. programs

Phone Stan, the ABS man at

(403) 330-9626

Albert (306) 297-3139 • Cel: (306) 741-0191

Email: amharr@sasktel.net



P.O. Box 64
100 Main Street
Hodgeville, SK S0H 2B0
Phone: 306.677.2388
Fax: 306.677.2289
Toll Free: 800.381.5502
www.innovationcu.ca

**HARV'S
REPAIR**

SPECIALIZING IN ALL
TYPES OF MECHANICAL
REPAIRS & WELDING

(306) 784-2913

Herbert, SK

**LYLE'S CUSTOM
CORRAL CLEANING**

Ph: (306) 626-3542

Box 97, Pennant, SK S0N 1K0

Thank You
*to our clerking staff,
Andrea, Deb & Loretta!*

A big THANK YOU to Matt Kornaga for helping us this winter!



Structurally sound feet and legs are the product of good genetics, proper nutrition, plenty of exercise and the absence of very high energy rations over extended periods. We do our best to ensure that our bulls have sound feet and legs. Weather permitting, we will once again display our bulls on packed gravel prior to the sale allowing you to assess their feet with ease.

TERMS & CONDITIONS

TERMS: The terms of the sale are cash or cheque payable at par. Settlement to be made immediately after the completion of the sale. The right of property shall not pass until after settlement is made. All settlements must be made with the clerk of the sale before any cattle will be released. All monies are Canadian funds.

BIDS: Every animal entering the sale ring will be sold to the highest bidder.

DISPUTES: In case of disputes, bidding will be reopened between the parties involved. If no further bid is made, the buyer will be the person from whom the auctioneer accepted the last bid. The auctioneer's decision of all disputes is final.

ANNOUNCEMENTS: All announcements made from the auction block will take precedence over the printed matter in the catalogue. Buyers are therefore cautioned to pay close attention to any such announcements.

PURCHASER'S RISK: Each animal becomes the risk of the purchaser as soon as sold.

INSURANCE: Insurance can be arranged for through the sales clerk.

CERTIFICATE OF REGISTRATION: Each animal will carry a Registration Certificate issued by the Canadian Angus Association. A certificate of registry, duly transferred, will be furnished to the buyer after payment has been made.

ACCIDENTS: Although every precaution will be taken to protect the safety and comfort of buyers, neither the sale management nor the auctioneer assume any responsibility in this matter and disclaim any liability, legal or otherwise, in the event of accident or loss of property.

LIABILITIES: All persons attending the sale do so at their own risk and sellers assume no liability, legal or otherwise, for any accidents occurring in or about the premises.

EXPORT TESTING: Required health certificates for cattle being exported will be provided.

Thanks for attending