

HAMILTON FARMS

Feature FEMALE Sale

Sale Day Phones...

403.932.5980 house • 403.932.5960 barn
403.540.3186 Rob cell • 403.540.8291 Gail cell

Sale Staff...

Steve Dorran - Auctioneer - 760.972.7736
Mark Stock - Ring Service - 306.678.4811
Ryan Dorran - Ring Service - 403.507.6483
Rod McLeod - Ring Service - 403.540.7986



Steve

Sale Consultants..



Optimal Bovines Inc.

Rob Holowaychuk
#407, 4808 Ross St.
Red Deer, AB T4N 1X5
Ph: (403) 341-5098
Fax: (403) 343-6133

Bob Toner: (306) 834-7385
Kirk Hurlburt: (306) 222-8210
Luc Noiseux: (450) 776-0997
email: o.b.i@shaw.ca
www.optimalbovines.com
www.cattlemanagement.ca



Rob



Box 1409
Crossfield, Alberta, CANADA
T0M 0S0
PH: 403-946-4999
FAX: 403-946-4919
TOLL FREE: 1-866-946-4999
Email: info@bouchardlivestock.com
Geoff Anderson 306-731-7921



Geoff



Guy Laffin - 1-970-396-7302

Offering...

88 Bred Productive Cows
25 Yearling Bred Heifers
57 Fancy Open Heifers
39 Breed Leading Embryos
150 Commercial Females out of HF Bulls!

Schedule of Events...

Friday December 12

Cattle Available for Viewing

Saturday December 13

Cattle Available for Viewing

11:00 am Complimentary Lunch is served by Fred Taylor

1:00 pm HAMILTON FARMS FEATURE FEMALE SALE

Special Representatives...

Kirk Wildman - Canadian Angus Association President
Doug Fee - CEO Canadian Angus Association
Colton Hamilton - Alberta Angus Association President
Brian Good - Canadian Angus Association Field Rep.



Welcome...

After a lot of thought and discussion this past spring and summer, we decided that the time has come to scale back our herd a bit and take this opportunity to move our Bull Sale to April after holding it in December for the past 15 years. We look forward to these new changes and we feel that the females we are offering for sale will provide a unique opportunity for cattle breeders to start an Angus herd, or just add to an existing herd. We have been asked a number of times why we are selling our prime females, our young future stars...the answer is this. In the past, we have always provided some of our top heifer calves to sell along with our bulls as we wanted to show case what our cows can do on the female side of things and thought that this would be a great compliment to our bull sale, and it was. Many juniors who purchased Hamilton Farms females have had great success in 4-H and junior shows and many established breeders have been impressed with the productivity from their purchases. Because we wanted this to be a special event, we wanted to do something that would build on the success of our past sales, and create the kind of excitement that can be garnered when buyers know that nothing is being held back. In a way this could be viewed as a dispersal but with the assurance that we will still be here in the future. As many of these females are sired by our current herd bull battery, this will also allow us to continue heavy use of some of our sires like HF Kodiak 5R, HF Tiger 5T, Powerline 0050, and others. Allowing these young cows and their daughters to leave the herd is a testament to our faith in our mature cows to carry the load for the next few years.

I think it is important to mention how our program works and how these cows have been raised. For the past number of years, our heifer calves have been weaned around the second week in September and brought back to the home ranch to be weighed and processed after which they are turned out on grass until they have settled down. After a week or 10 days, they are then turned back out to pasture, (both tame and native grass) and learn to fend for themselves and rustle until the first part of December. Once they are brought home for the winter, they receive a total mixed ration which is 22% chopped hay and 78% silage. They remain on this ration until they go out on pasture the next spring, no grain is ever added to our female rations.

These cows are working cows...they have never been pampered, and they are bringing to the sale an outstanding group of heifer calves that will be sure to impress the most discriminating cattlemen. The bulls that some of these cows weaned this past fall will be available for viewing as well and so plan to come anytime between now and the December 13th to view the lineup. The embryo's on offer in this sale are a sample of our top matings and you can be sure that quality and consistency are built in.

The commercial heifers consigned by Doug and Helga Price, Echo Sands Ranch, and George Murray, GW Murray Ranching, are an outstanding set of bred heifers that I know will make their new owners proud. These heifers are sired by, and bred to, Hamilton Farms Bulls. 150 heifers selected from over 400 replacement females!

In our opinion, the beef industry is setting up for some very prosperous years and this could be a great opportunity to add some quality genetics from the very heart of our herd. As I have mentioned before, we haven't sold any production aged females for over 20 years and what a time to get in on a true breeding program. All of our cow families are represented, lots of half sisters, and lots to choose from.

Join us for our open house on December 12th, 2010, and plan to join us for the sale on Monday, December 13th, 2010.

Looking forward to seeing you,

Sincerely,

Rob & Gail Hamilton

HAMILTON
FARMS

ANGUS - SIMMENTAL



Hamilton

FARMS

Rob & Gail Hamilton, Wyatt, Wacey & Joel
Box 11, Site 15, RR#2, Cochrane, AB T4C 1A2
Ph: 403.932.5980 • Cell: 540.3186
email: angus@hamiltonfarms.ca

www.hamiltonfarms.ca

HAMILTON FARMS *Feature* FEMALE *Sale*

General Information

Sale Accommodations...

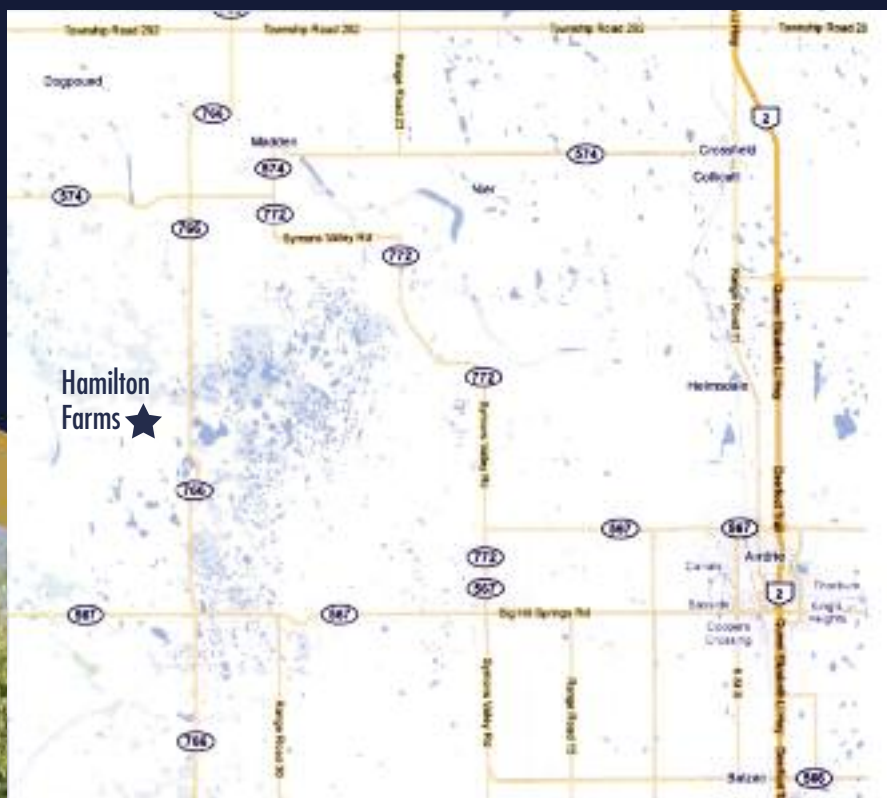
Holiday Inn Express Hotel & Suites – Airdrie 1-866-912-1952
 Airdrie Ramada Inn & Suites – Airdrie 403-945-1288
 Comfort Inn & Suites – Airdrie 403-948-3411
 Best Western Harvest Country Inn – Cochrane 403-932-1410
 Days Inn & Suites - Cochrane 403-932-5588
 Hampton Inn & Suites – near Calgary Airport 403-250-4667

Sale Offering Video...

A video of the sale offering is available. Please make your request as soon as possible to ensure it arrives on time.

View the catalog online at...

www.hamiltonfarms.ca • www.dlms.ca
www.cattlemangement.ca • bouchardlivestock.com.



Sale Location...

FROM CALGARY:

9.6 km (6 miles) west on Hwy. 1A,
 18 km (11.25 miles) north on Hwy 766,
 1.6 km (1 mile) west.

FROM AIRDRIE:

22.4 km (14 miles) west on
 Bill Hill Springs Rd.,
 7.4 km (4.5 miles) North on Hwy 766,
 1.6 km (1 mile) west.

"A very reputable cattle breeder from Scotland commented on the "Power" in Tibbie's head and said it would certainly be a reflection in how well she would breed in the years to come"



MVF TIBBIE 15T

The Matriarch of the Hamilton Herd!

Terms of Settlement...

Settlement should be made with the clerks immediately following the sale. All funds are in Canadian dollars and we will have the exchange rate on sale day for our U.S. friends. Please make sure to have the clerks record your transfer instructions and shipping information at the time of purchase.

Terms & Conditions...

All cattle sell under the standard Terms and Conditions set out by the Canadian Angus Association.

Insurance...

There will be an insurance representative present sale day. We strongly recommend that insurance is purchased for the value of the animal.

Air Travel...

All major airlines serve Calgary International Airport

Disputes...

Every animal sells to the highest bidder and in cases of disputes, the auctioneer's decision will be final. Announcements from the auction block will take precedence over the printed matter in the catalogue.

Loading Out...

Please bring your own truck & trailer, loading out will be available after sale.

Registration Papers...

All animals selling are registered and will be transferred only upon full payment.

Embryos...

All embryos are guaranteed exportable.

Liability...

Hamilton Farms accepts no liability for accidents that may occur. Mishaps at cattle sales are very rare, but all attending must do so at their own risk.

Pregnancy Information...

All serviceable females have been pregnancy examined by an accredited veterinarian, giving an estimated date of conception. This estimated date shall be used only as a guideline to calving and is not a 100% guarantee of actual service date.

Shipping...

We will assist in arranging transportation wherever possible. Cattle will be available for loading after the sale. We will assist in arrangements for cattle to be shipped to buyer.

H.S. Knill Co. (519) 442-3106

Bruce Stewart (204) 773-6695

Continental Cattle Carriers/Rick Silbernagel 403-946-4172 or 403-620-7896

U.S. Shipments...

Hamilton Farms will do all health testing and export papers required for shipment. We will assist in arrangements for the cattle to be shipped to central points in the U.S. Cost is the responsibility of the buyer.

Sale Catalogue...

Production & Design - Prime Cut Publishing - Kim Matthews

Photography - Grant Rolston Photography

VIEW THE CATALOGUE ON LINE AT:

www.hamiltonfarms.ca

Can't make it to the sale?

Bid Live Online.

Instructions for Viewing And Bidding At the Sale

1. Visit www.dlms.ca
2. Fill out the registration form located under registration.
3. Click on downloads and follow the four step instructions located on the screen.
4. Click test your computer. You will see the Test Video and Bid Control Box.

To be Approved as a bidder or any other questions please e-mail marketing@dlms.ca or call Mark - 781-895-6082

With DLMS you can Watch, Listen & Bid on Your Computer just like you were there with Online Bidding over the Internet

Visit www.dlms.ca today!

Direct Livestock Marketing Systems
We're Making the Connection

DLMS
www.dlms.ca

To find an agent near you visit www.dlms.ca

Purebred Sales • Daily Presort Sales
Direct Off-farm Sales every Thursdays at 10:00 am

www.hamiltonfarms.ca

Feature FEMALE Sale

HF Kodiak 5R

Kodiak has established himself as one of the leading sires in the Angus industry today...He is a proven herd sire that consistently produces the cow mans kind and does so without sacrificing good looks and eye appeal.

Kodiak sold through the 2005 Masterpiece Sale and went to Soo Line Cattle Co. and Geis Angus for \$45,000.00 for 1/2 interest. His progeny have consistently topped sales held by Soo Line Cattle, Geis Angus, and Hamilton Farms and he is far from being out of date. Many sons have sold with hi-lites being HF Tiger 5T, high selling bull at the 07 Hamilton Farms sale for \$52,000.00 for 1/2 interest to Ring Creek Farm, HF El Tigre 28U, high selling bull through the 08 Masterpiece Sale for \$82,500.00 for 1/2 interest to Ring Creek Farm, HF Erica 26T, high selling female at the 07 Hamilton Farms sale for \$20,000.00 going to Continental Angus, Dr. Gordon Atkins, and Walkerbrae Farms. Kodiak's first 40 calves to sell at auction averaged over \$7000.00, his progeny still demand a premium, and this year marks his 4th calf crop to hit the ground. Ko-



diak's progeny have done well in the show ring as well as the pasture...At the 2009 World Angus Forum, Kodiak was awarded 'Premier Sire' of the Show. His son HF Tiger 5T was the Grand Champion Bull, HF El Tigre 28U was Junior Champion Bull, and HF Erica 26T was Champion 2year old cow/calf pair. The latest accomplishment was with Soo Line Cattle Co. winning Grand Champion Pen of Bulls at the National Western Stock Show in Denver with Kodiak sired bulls. Never before has a Canadian breeder won this prestigious event let alone a Canadian bred bull being the sire.

Note his impressive EPD's for birth, performance and milk! Cows bred to Kodiak typically calve 5 to 10 days early, have low birth weights and wean heavy. His daughters have awesome udders with tight attachment, small teats, and longevity to burn. There is a reason Kodiak is so popular today...he breeds true and he is the cow mans kind.



WILBAR RUBY 955N - DAM OF HF KODIAK 5R



HF ERICA 26T - DAUGHTER OF HF KODIAK 5R
HIGH SELLING HEIFER CALF IN THE 2007 HAMILTON SALE
SHE SELLS AS LOT 1



HF BLACKBIRD 63X - DAUGHTER OF HF KODIAK 5R
SHE SELLS AS LOT 20



BULL • HAMI 5R • JANUARY 05 2005 • #1274305

HF Kodiak 5R

TC ADVANTAGE
SANDY BAR ADVANTAGE 43M
SANDY BAR JEMINA 44K

VERMILION YELLOWSTONE
WILBAR RUBY 955N
WILBAR RUBY 161J

KRUGERRAND OF DONAMERE 490
TC PRIDE 2010
DCC HIGH RISE 67H
SANDY BAR JEMINA 54D
VERMILION DATELINE 7078
VERMILION B JESTRESS 3912
EARLY SUNSET HIGH TIME 47G
WILBAR RUBY 3F

BW	ADJ WW	ADJ YW
82	858	1404

EPD'S	BW	WW	YW	MILK	TM	YG
	-0.4	50	86	16	41	36



GRAND CHAMPION PEN OF BULLS AT THE 2010 NATIONAL WESTERN STOCK SHOW, DENVER, CO WAS Sired BY HF KODIAK 5R

Feature FEMALE Sale

HF Tiger 5T

Tiger is one of our feature herd sires that sold in our 2007 bull sale for a record breaking \$52,000.00 for one half interest, going to Ring Creek Farm, Pat and Len Friedel, Fairview, Alberta. This bull represents all the qualities that we are looking for in Angus cattle. First of all he was born unassisted from a 2 year old female with just a 76 pound birth weight. He then performed all summer and weaned off his mom on August 30th with a weight of 830 pounds. He has been admired by many astute cattlemen for his correct structure, appealing muscle shape, and proud character. His dam, HF Echo 84R, is a hard working Freedom daughter from the Echo cow family which has contributed so much to our cow herd. In 2008 she again did us proud by weaning her second calf at 880 pounds, a bull calf named HF El Tigre 28U who is a carbon copy of Tiger. El Tigre 28U sold at the CWA Masterpiece Sale 2008 to Ring Creek Farm for \$82,000.00 for 1/2 interest. El Tigre also posted outstanding birth to yearling numbers: BW - 85, 205 Adj Wt - 795 lbs and 365 Adj Wt - 1425 lbs.

Tiger is sired by HF Kodiak 5R who has done an impressive job of breeding in our herd as well as Soo Line Cattle Co. and Geis Angus herds. We feel that the value of Kodiak and Tiger's progeny will be appreciated for their early gestation and calving ease, true and reasonable performance, and correct structure. HF Tiger 5T has been an important part of Hamilton Farms and Ring Creek Farms program's and will continue on into the fu-

ture. All indications in his first two calf crops is that Tiger will breed true and very similar to Kodiak.

In 2007 Tiger was named Reserve Senior Bull Calf Champion at the Olds Gold Show, Senior Bull Calf Champion at Farmfair, and Supreme Champion Bull in the 'Legends of the Fall' all breeds show at Farmfair, and won Senior Bull Calf Champion at Agribition. In 2008 Tiger was Grand Champion Bull at Spruce Meadows and Year II Angus Futurity in Olds, Reserve Grand Champion Bull at Farmfair and Grand Champion Bull at Saskatoon Fall Fair as well as Supreme Champion Bull over all breeds. Then to top it all off in 2009, Tiger was undefeated being named Grand Champion Bull at the World Angus Forum 2009 at Spruce Meadows in Calgary, AB, Grand Champion and Supreme Champions bull at Farmfair International, Grand Champion and Supreme Champion Bull at the Canadian Western Agribition. Tiger was also part of the Champion Breeders Herd at Spruce Meadows as well as having a number of his progeny win their classes and go on to be Division Champions. A true sign of his value is when he can breed the type of cattle that he has in his first two calf crops.



HF SWAGGER 75W - SON OF HF TIGER 5T
SOLD IN THE MASTERPIECE SALE FOR \$37,500.00



HF TIGER 5T
2009 WORLD ANGUS FORUM GRAND CHAMPION BULL



HF TIGER 5T
2009 SUPREME CHAMPION BULL, FARMFAIR INTERNATIONAL
& 2009 SUPREME CHAMPION BULL, CANADIAN WESTERN AGRIBITION



BULL • HFDF 5T • JANUARY 01 2007 • #1402252

HF Tiger 5T

SANDY BAR ADVANTAGE 43M
HF KODIAK 5R
WILBAR RUBY 955N
TC FREEDOM 104 NHF AMF
HF ECHO 84R
HFDF ECHO 6N

TC ADVANTAGE NHF AMF CAF
SANDY BAR JEMINA 44K
VERMILION YELLOWSTONE NHF AMF CAF
WILBAR RUBY 161J
CONNELLY FOREFRONT NHF AMF CAF
T C RUBY 9095
HF WALK-ON 14C RIVERBEND POWERLINE 0050
HF ECHO 83J

BW	ADJ WW	ADJ YW
76	796	1338



HF EVENING TINGE 138W - DAUGHTER OF HF TIGER
SHE SELLS AS LOT 64

EPD' S	BW	WW	YW	MILK	TM	YG
	-0.5	62	115	22	53	52



LOT 1

HF ERICA 26T

Erica 26T has been a standout since birth and has been admired by so many who have toured our herd. She is a model Angus cow with superior muscle shape, udder confirmation, and overall femininity. Erica 26T was the high selling female in our 2007 sale and was selected by Continental Angus, Dr. Gordon Atkins, and Walkerbrae Farms, for \$20,000.00 for 1/2 interest. Her show career has been consistent, winning Sr. Heifer Calf Champion at Agribition 2007, Sr. Yearling Champion, Farmfair 08, and Champion 2-year old Pair at World Angus Forum 2009. 26T's first calf was an impressive bull by Predominant, which posted an 81 pound birth weight, and an adjusted weaning weight of 808 pounds, ranking 7th out of 154 bulls. Her second calf is coming to you in this sale...a powerful Southland Exclusive daughter that will be one of the highlights of the day. At her first show, HF Erica 20X was Supreme Champion Heifer in the Legends of the Fall Show at Farmfair 2010. Sired by Kodiak, one of the premier sires in the breed, and out of a strong TC Freedom daughter, which is building her own credentials and rising to the top of our elite cows at Hamilton Farms. HF Erica 26T definitely warrants being Lot 1 in this select sale and should have a great future ahead of her.



HF ERICA 26T & HF ROCK STAR 67W
 2009 WORLD ANGUS FORUM CHAMPION 2 YEAR OLD FEMALE

1 FEMALE • HAMI 26T • JANUARY 08 2007 • #1402168
 HF Erica 26T

HF KODIAK 5R	SANDY BAR ADVANTAGE 43M	TC ADVANTAGE NHF AMF CAF
HF ERICA 182R	WILBAR RUBY 955N	SANDY BAR JEMINA 44K
HF ERICA 61F	TC FREEDOM 104 NHF AMF	VERMILION YELLOWSTONE NHF AMF CAF
	HF ERICA 61F	WILBAR RUBY 161J
		CONNELLY FOREFRONT NHF AMF CAF
		T C RUBY 909S
		HF WALK-ON 14C
		ERICA OF RANNOCH 122C

BW	ADJ WW	EPD'S	BW	WW	YW	MILK	TM	YG
68	660		0.8	49	80	23	48	31

SELLS OPEN AND READY TO FLUSH

Feature FEMALE Sale

Erica Cow Family The HF Erica Cow Family



LOT 1A

HF ERICA 20X



HF ERICA 20X
THE LEGENDS OF THE FALL CHAMPION HEIFER AT
FARMFAIR INTERNATIONAL 2010

20X is a broody young matron will make your jaw drop when you see the power, volume, and overall thickness she possesses. She is already a winner in the show ring, winning Supreme Champion Heifer in the Legends of the Fall Show at Farmfair International 2010.



REF

HF ERICA 25K • DAM OF LOTS 2A & 2B

Erica 25K repeatedly produces the right kind for us. She is a full sister to HF Justice 52L who served as a herd sire for Prime Time Cattle Co. and another full sister sold to Gigginstown Angus, Ireland, for \$10,000.00. She is also a maternal sister to the dam of HF Erica 26T who sells as Lot 1. Erica 25K has had success in the show ring as well, including Res. Champion Female-Agribition 2001, Heartland First Lady Classic 2001, and Supreme Champion

female, Olds Fair 2002. Erica 25K's heifer calf Erica 394X (x Kodiak) is a feature lot in the 2010 Masterpiece Sale at Agribition.

Connealy Consensus was the high selling bull in the 2010 Connealy Angus bull sale selling for \$210,000.00 to Sandpoint Cattle Company and Express Ranches.

Consensus has created quite a stir south of the border since he sold last spring and this will

be a rare opportunity to acquire his genetics this fall. He is powerful in stature, has outstanding phenotype, and has an outcross pedigree that has long been waited for.



REF

HF ERICA 394X • DAUGHTER OF HF ERICA 25K



REF

CONNELLY CONSENSUS • SIRE OF LOT 2

1A FEMALE • HAMI 20X • JANUARY 07 2010 • #1569054
HF Erica 20X

SOUTHLAND FREE RIDE 68R
SOUTHLAND EXCLUSIVE 62U
SOUTHLAND SUSAN 58L
TC FREEDOM 104 NHF AMF
SOUTHLAND ERROLINE 44L
RONAN R BANDOLIERMERE 108H
RONAN SUSAN 36J

BW	ADJ WW	EPD'S	BW	VW	YW	MILK	TM	YG
90	749		4.3	55	90	21		33

REF FEMALE • HAMI 25K • JANUARY 09 2000 • #1018788
HF Erica 25K

WK ULTIMATUM
GREENS PREMIUM 7578
GREENS LORI 5078
HF WALK-ON 14C
HF ERICA 61F
ERICA OF RANNOCH 122C

BW	ADJ WW	EPD'S	BW	VW	YW	MILK	TM	YG
90	638		4.1	45	73	15	38	29

2A 4 Frozen Embryos

KMK ALLIANCE 6595 187
CONNELLY CONSENSUS
BLINDA OF CONANGA 004
GREENS PREMIUM 7578
HF ERICA 25K
HF ERICA 61F

2B 4 Frozen Embryos

SANDY BAR ADVANTAGE 43M
HF KODIAK 5R
WILBAR RUBY 955N
GREENS PREMIUM 7578
HF ERICA 25K
HF ERICA 61F

Feature FEMALE Sale

The Echo Cow Family



LOT 3

HF ECHO 247T

E-C-H-O spells stunning, which is how many astute cattlemen have described the Echo family. Like they say...the apple doesn't fall far from the tree, as daughter after grand daughter after great grand daughter confidently upheld the family name.

The Echo cow family possesses unmatched poise and eye appeal. We could write a novel with the accolades and achievements the Echo's have accomplished, but probably most importantly is how the Echo cow family keeps rising to the top generation after generation.

Our original Echo was Duralta Echo 32E, the matron of the Echo family. 32E was only ever beaten in the show ring by her stall mate HF Blackbird 99G. Just to mention a few of her accomplishments, Echo 32E was Grand Champion Female at Calgary, Farmfair, Agribition and Saskatoon in both 1997 and 1998, then was kept open for flushing in 1999 and back on the road in 2000. Again, she went above and beyond notching up two Supreme Championships both in Calgary and Regina Agribition. Also adding to her wall of fame were sales like high selling heifer calves to Express Ranches for \$17,000.00, another to Simcal Investments for \$16,000.00 and a herd bull prospect to K-Deen Angus and Bert Shantz for \$15,000.00.

3 FEMALE • HFDF 247T • FEBRUARY 02 2007 • #1402314
HF *Echo* 247T

SANDY BAR ADVANTAGE 43M	TC ADVANTAGE NHF AMF CAF
HF KODIAK 5R	SANDY BAR JEMINA 44K
WILBAR RUBY 955N	VERMILION YELLOWSTONE NHF AMF CAF
	WILBAR RUBY 161J
RIVERBEND POWERLINE 0050	CONNELLY FRONTLINE NHF AMF CAF
HFDF ECHO 6N	LEACHMAN BLACKBIRD 8060
HF ECHO 83J	WHITSTONE 9FB3 G228
	DURALTA 14C ECHO 32E

BW	ADJ WW	EPD'S	BW	WW	YW	MILK	TM	YG
82	722		1.9	53	87	20	47	25

AI APR 12 TO SOUTHLAND EXCLUSIVE 62U CHECKED SAFE. PE HF HEMI 151T MAY 8 - JUNE 19



LOT 3A

HF ECHO 321X

3A FEMALE • HAMI 321X • FEBRUARY 16 2010 • #1569268
HF *Echo* 321X

SOUTHLAND FREE RIDE 68R	TC FREEDOM 104 NHF AMF
SOUTHLAND EXCLUSIVE 62U	SOUTHLAND ERROLINE 44L
SOUTHLAND SUSAN 58L	RONAN R BANDOLIERMERE 108H
	RONAN SUSAN 36J

BW	ADJ WW	EPD'S	BW	WW	YW	MILK	TM	YG
87	702		3.9	54	90	19		35

HF Echo 83J was Show Female of the Year 2002 after winning Res Grand Champion Female at Calgary Stampede and Farmfair International, and Grand Champion Female at Saskatoon Fall Fair and Agribition 2002. Her calf that showed along side of her that year was the High Selling Female at the Masterpiece sale, going to Remington Cattle Co. for \$16,500.00. Echo 83J is the grand dam of the high selling bull HF Xtreme 117U going to Southland Angus, Shaunavon SK for \$14,000.00. Echo 83J is also the great grand dam of HF Tiger 5T.



REF HF ECHO 83J • GRANDDAM OF LOT 3

2002 SHOW FEMALE OF THE YEAR

Feature FEMALE Sale

Echo Cow Family The Echo Cow Family

One of her greatest accomplishments occurred when Echo 32E was flushed to TC Freedom and Echo 187N and her outstanding flush mates were born. A full sister sold to Marlene Douglas for \$17,000.00, half interest in HF Free Wheeler 191N to LLB Angus for \$9,000.00 and yet another full brother for \$7,750.00. Echo 187N may have surpassed her dam in her accomplishments, in the open show, going undefeated as a calf, yearling and then topping it off in 2005 by reigning Grand Champion Female at Calgary, Farmfair and Agribition as well as Supreme Champion Female at Calgary and Agribition. But probably more importantly is the fact that we have had more people from every breed complimenting us on the quality of this female, regardless of breed or color. Other Echo females of note in the family are HF Echo 6N, the grand dam of our herd sire, HF Tiger 5T and HF El Tigre 28U. The great grand dam, HF Echo 83J was Show Female of the year in 2002 with high sellers including a heifer calf going to Remington Cattle Co for \$16,500.00. The proof is in the pudding in the lineage of this cow family.

4 FEMALE • HAMI 189T • JANUARY 22 2007 • #1403711
HF *Echo* 189T

SANDY BAR ADVANTAGE 43M
HF KODIAK 5R
WILBAR RUBY 955N
TC FREEDOM 104 NHF AMF
HF ECHO 187N
DURALTA 14C ECHO 32E

TC ADVANTAGE NHF AMF CAF
SANDY BAR JEMINA 44K
VERMILION YELLOWSTONE NHF AMF CAF
WILBAR RUBY 161J
CONNELLY FOREFRONT NHF AMF CAF
T C RUBY 9095
HF WALK-ON 14C
STONEHAVEN MISS PONDEROSA 9U

BW	ADJ WW	EPD'S	BW	WW	YW	MILK	TM	YG
81	634		1.8	38	70	12	31	31

AI APR 17 TO HF HEMI 176W CHECKED SAFE. PE HF HEMI 151T MAY 8 - JUNE 19



LOT 4 HF ECHO 189T

5 FEMALE • HAMI 182T • JANUARY 21 2007 • #1403703
HF *Echo* 182T

S A V 8180 TRAVELER 004 NHF AMF CAF
S A V 004 PREDOMINANT 4438 NHF AMF CAF
S A V EMBLYNETTE 1182
TC FREEDOM 104 NHF AMF
HF ECHO 187N
DURALTA 14C ECHO 32E

SITZ TRAVELER 8180 NHF AMF CAF
BOYD FOREVER LADY 8003
S A F 598 BANDO 5175 AMF CAC
S A V EMBLYNETTE 7319
CONNELLY FOREFRONT NHF AMF CAF
T C RUBY 9095
HF WALK-ON 14C
STONEHAVEN MISS PONDEROSA 9U

BW	ADJ WW	EPD'S	BW	WW	YW	MILK	TM	YG
88	586		3.4	45	79	19	42	34

AI MAY 14 TO HF SWAGGER 75W CHECKED SAFE. PE HF HEMI 151T MAY 30 - JUNE 19



LOT 5 HF ECHO 182T

6 FEMALE • HAMI 7S • JANUARY 04 2006 • #1332165
HF *Echo* 7S

TC ADVANTAGE NHF AMF CAF
SANDY BAR ADVANTAGE 43M
SANDY BAR JEMINA 44K
GREENS PREMIUM 7578
HF ECHO 97K
DURALTA 14C ECHO 32E

KRUGERRAND OF DONAMERE 490 NHF AMF
TC PRIDE 2010
DCC HIGH RISE 67H
SANDY BAR JEMINA 54D
WK ULTIMATUM
GREENS LORI 5078
HF WALK-ON 14C
STONEHAVEN MISS PONDEROSA 9U

BW	ADJ WW	EPD'S	BW	WW	YW	MILK	TM	YG
85	551		4.2	40	72	14	34	32

AI APR 7 TO HF EL TIGRE 28U CHECKED SAFE. PE HF KODIAK 250U MAY 29 - JULY 19



LOT 6 HF ECHO 7S

Feature FEMALE Sale

The Echo Cow Family



LOT 7A

HF ECHO 368X



LOT 7

HF ECHO 317T

7 FEMALE • HAMI 317T • FEBRUARY 20 2007 • #4037041

HF Echo 317T

S A V 8180 TRAVELER 004 NHF AMF CAF
S A V 004 PREDOMINANT 4438 NHF AMF CAF
S A V EMBLYNETTE 1182

HF WALK-ON 14C
DURALTA 14C ECHO 32E
STONEHAVEN MISS PONDEROSA 9U

SITZ TRAVELER 8180 NHF AMF CAF
BOYD FOREVER LADY 8003
S A F 598 BANDO 5175 AMF CAC
S A V EMBLYNETTE 7319
MVHF DREAMWALKER 29A
KNIGHTS BLACKBIRD 9Y
4S PONDEROSA
STONEHAVEN JEAN 5L

BW	ADJ WW	EPD'S	BW	WW	YW	MILK	TM	YG
75	590		3.1	39	67	15	35	28

AI APR 19 TO HF SWAGGER 75W CHECKED SAFE. PE HF HEMI 151T MAY 8 - JUNE 19



LOT 8

HF ECHO 106S

7A FEMALE • HAMI 368X • FEBRUARY 28 2010 • #1569299

HF Echo 368X

SANDY BAR ADVANTAGE 43M
HF KODIAK SR
WILBAR RUBY 955N

TC ADVANTAGE NHF AMF CAF
SANDY BAR JEMINA 44K
VERMILION YELLOWSTONE NHF AMF CAF
WILBAR RUBY 161J

BW	ADJ WW	EPD'S	BW	WW	YW	MILK	TM	YG
75	668		0.9	46	79	16		32

8 FEMALE • HAMI 106S • JANUARY 23 2006 • #1349758

HF Echo 106S

KRUGERRAND OF DONAMERE 490 NHF AMF
TC ADVANTAGE NHF AMF CAF
TC PRIDE 2010

HF WALK-ON 14C
DURALTA 14C ECHO 32E
STONEHAVEN MISS PONDEROSA 9U

C H STACKER 7040
DONAMERE BACHEL BEAUTY 288
Q A S TRAVELER 23-4 NHF AMF CAF
TC PRIDE 0011
MVHF DREAMWALKER 29A
KNIGHTS BLACKBIRD 9Y
4S PONDEROSA
STONEHAVEN JEAN 5L

BW	ADJ WW	EPD'S	BW	WW	YW	MILK	TM	YG
81	561		2.0	31	61	22	38	29

AI APR 25 TO HF SWAGGER 75W CHECKED SAFE. PE HF KODIAK 250U MAY 29 - JULY 19

Echo Cow Family
The Echo Cow Family



LOT 9 HF ECHO 74T



LOT 10 HF ECHO 303T



LOT 10A HF ECHO 296X

9 FEMALE • HAMI 74T • JANUARY 12 2007 • #1401797
HF *Echo* 74T

SANDY BAR ADVANTAGE 43M
HF KODIAK 5R
WILBAR RUBY 955N
O G L BATTLE CRY 427 128
HF ECHO 180M
DURALTA 14C ECHO 32E

TC ADVANTAGE NHF AMF CAF
SANDY BAR JEMINA 44K
VERMILION YELLOWSTONE NHF AMF CAF
WILBAR RUBY 161J
NICHOLS EUREKA W57
O G L DUSTY ROSE 128 902
HF WALK-ON 14C
STONEHAVEN MISS PONDEROSA 9U

BW	ADJ WW	EPD'S	BW	WW	YW	MILK	TM	YG
72	578		0.7	34	68	14	31	34

AI APR 11 TO SOUTHLAND EXCLUSIVE 62U CHECKED SAFE. PE HF HEMI 151T MAY 8 - JULY 19

10 FEMALE • HAMI 303T • FEBRUARY 15 2007 • #1401854
HF *Echo* 303T

1401854
DURALTA 429M REALIST 77R
DURALTA GEORGINA 59N
TC FREEDOM 104 NHF AMF
HF ECHO 207N
DURALTA 14C ECHO 32E

SITZ TRAVELER 8180 NHF AMF CAF
SITZ BARBARAMERE JET 2698
DURALTA 5320 CRUISE 37L
SPRUCE VIEW GEORGINA 81L
CONNELLY FOREFRONT NHF AMF CAF
T C RUBY 9095
HF WALK-ON 14C
STONEHAVEN MISS PONDEROSA 9U

BW	ADJ WW	EPD'S	BW	WW	YW	MILK	TM	YG
73	614		1.6	35	71	19	37	36

AI APR 11 TO HF EL TIGRE 28U CHECKED SAFE. PE HF HEMI 151T MAY 8 - JUNE 19

10A FEMALE • HAMI 296X • FEBRUARY 11 2010 • #1569258
HF *Echo* 296X

SANDY BAR ADVANTAGE 43M
HF KODIAK 5R
WILBAR RUBY 955N

TC ADVANTAGE NHF AMF CAF
SANDY BAR JEMINA 44K
VERMILION YELLOWSTONE NHF AMF CAF
WILBAR RUBY 161J

BW	ADJ WW	EPD'S	BW	WW	YW	MILK	TM	YG
68	634		-1.2	39	75	18		36

Feature FEMALE Sale

The Echo Cow Family

11 FEMALE • HFDF 17T • JANUARY 02 2007 • #1411600
HF *Echo* 17T

BT RIGHT TIME 24J NHF AMF CAF
HF DONE RIGHT 125R
HF ROSEBUD 127K

TC FREEDOM 104 NHF AMF
HF ECHO 167R
HFDF ECHO 13N

LEACHMAN RIGHT TIME AMF
SITZ EVERELDA ENTENSE 1905
HF MOST WANTED 46H
HF MOST WANTED 46H
CONNELLY FOREFRONT NHF AMF CAF
T C RUBY 9095
RIVERBEND POWERLINE 0050
HF ECHO 83J

BW	ADJ WW	EPD'S	BW	WW	YW	MILK	TM	YG
70	626		2.0	39	75	20	40	36

OBSERVED BRED MAY 4 HF KODIAK 250U CHECKED SAFE. PE HF HEMI 151T MAY 25 - JULY 19



LOT 11 HF ECHO 17T

12 FEMALE • HAMI 47T • JANUARY 06 2007 • #1402117
HF *Echo* 47T

SANDY BAR ADVANTAGE 43M
HF KODIAK 5R
WILBAR RUBY 955N

BT RIGHT TIME 24J NHF AMF CAF
HF ECHO 39R
DURALTA 14C ECHO 32E

TC ADVANTAGE NHF AMF CAF
SANDY BAR JEMINA 44K
VERMILION YELLOWSTONE NHF AMF CAF
WILBAR RUBY 161J
LEACHMAN RIGHT TIME AMF
SITZ EVERELDA ENTENSE 1905
HF WALK-ON 14C
STONEHAVEN MISS PONDEROSA 9U

BW	ADJ WW	EPD'S	BW	WW	YW	MILK	TM	YG
67	638		0.2	42	72	15	36	30

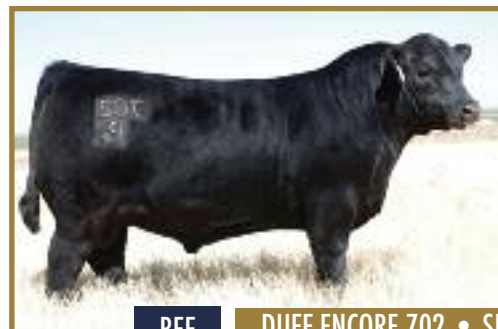
AI APR 10 SOUTHLAND EXCLUSIVE 62U CHECKED SAFE. PE HF HEMI 151T MAY 8 - JUNE 19



LOT 12 HF ECHO 47T



REF HF ECHO 90J • DAM OF LOT 13



REF DUFF ENCORE 702 • SIRE OF LOT 13

13 FEMALE • HAMI 297W • FEBRUARY 09 2009 • #1511399
HF *Echo* 297W

D H D TRAVELER 6807 NHF AMF
DUFF ENCORE 702 NHF AMF CAF
O C C DIXIE ERICA 814G

WHITESTONE 9FB3 G228
HF ECHO 90J
DURALTA 14C ECHO 32E

TC ADVANTAGE NHF AMF CAF
SANDY BAR JEMINA 44K
VERMILION YELLOWSTONE NHF AMF CAF
WILBAR RUBY 161J
RITO 9FB3 OF 5H11 FULLBACK NHF AMF CAF
S V F FOREVER LADY 1121
HF WALK-ON 14C
STONEHAVEN MISS PONDEROSA 9U

BW	ADJ WW	EPD'S	BW	WW	YW	MILK	TM	YG
90	570		5.3	34	58	15	32	24

OBSERVED BRED JUNE 1 SIX MILE FINAL ROUND 914W CHECKED SAFE.
PE SIX MILE FINAL ROUND 914W MAY 22 - JULY 27

Echo Cow Family
The Echo Cow Family

14 FEMALE • HAMI 363W • MARCH 07 2009 • #1511445
 HF *Echo* 363W

PRAIRIELANE IDEAL 7451-2014
 SANDY BAR IDEAL 18S
 SANDY BAR PRIDE 89L
 HF JUSTICE 52L
 HF ECHO 54R
 HFDF ECHO 15N

IDEAL 7451 OF 8103 4465 NHF AMF CAF
 PRAIRIELANE MAX DUCHESS 3050
 SANDY BAR TONTO 61E
 SANDY BAR PRIDE 6H
 GREENS PREMIUM 7578
 HF ERICA 61F
 RIVERBEND POWERLINE 0050
 HF ECHO 83J

BW	ADJ WW	EPD'S	BW	WW	YW	MILK	TM	YG
85	704		2.4	51	84	19	45	33

AI APR 22 TO HF KODIAK 5R CHECKED SAFE. PE SIX MILE FINAL ROUND 914W MAY 18 - JULY 27

15 FEMALE • HAMI 120W • JANUARY 16 2009 • #1511268
 HF *Echo* 120W

PRAIRIELANE IDEAL 7451-2014
 SANDY BAR IDEAL 18S
 SANDY BAR PRIDE 89L
 RIVERBEND POWERLINE 0050
 HFDF ECHO 13N
 HF ECHO 83J

IDEAL 7451 OF 8103 4465 NHF AMF CAF
 PRAIRIELANE MAX DUCHESS 3050
 SANDY BAR TONTO 61E
 SANDY BAR PRIDE 6H
 CONNEALY FRONTLINE NHF AMF CAF
 LEACHMAN BLACKBIRD 8060
 WHITSTONE 9FB3 G228
 DURALTA 14C ECHO 32E

BW	ADJ WW	EPD'S	BW	WW	YW	MILK	TM	YG
87	661		2.7	48	82	22	46	33

AI APR 9 TO HF KODIAK 5R CHECKED SAFE. PE SIX MILE FINAL ROUND 914W MAY 18 - JULY 27



LOT 14 HF ECHO 363W



LOT 15 HF ECHO 120W



REF SANDY BAR IDEAL • SIRE OF LOTS 14 & 15

Feature FEMALE Sale

The Echo Cow Family

16 FEMALE • HAMI 28X • JANUARY 08 2010 • #1569060

HF Echo 28X

SOUTHLAND FREE RIDE 68R
SOUTHLAND EXCLUSIVE 62U
SOUTHLAND SUSAN 58L

HF KODIAK 5R
HF ECHO 79T
HF ECHO 187N

TC FREEDOM 104 NHF AMF
SOUTHLAND ERROLINE 44L
RONAN R BANDOLIERMERE 108H
RONAN SUSAN 36J
SANDY BAR ADVANTAGE 43M
WILBAR RUBY 955N
TC FREEDOM 104 NHF AMF
DURALTA 14C ECHO 32E

BW	ADJ WW	EPD'S	BW	WW	YW	MILK	TM	YG
84	642		3.1	44	76	18		34



LOT 16

HF ECHO 28X

17 FEMALE • HAMI 269X • FEBRUARY 05 2010 • #1569239

HF Echo 269X

SANDY BAR ADVANTAGE 43M
HF KODIAK 5R
WILBAR RUBY 955N

HF DONE RIGHT 125R
HF ECHO 176U
HF ECHO 75

TC ADVANTAGE NHF AMF CAF
SANDY BAR JEMINA 44K
VERMILION YELLOWSTONE NHF AMF CAF
WILBAR RUBY 161J
BT RIGHT TIME 24J NHF AMF CAF
HF ROSEBUD 127K
SANDY BAR ADVANTAGE 43M
HF ECHO 97K

BW	ADJ WW	EPD'S	BW	WW	YW	MILK	TM	YG
83	674		3.2	48	84	16		36



LOT 17

HF ECHO 269X

18 FEMALE • HAMI 409X • MARCH 27 2010 • #1569320

HF Echo 409X

SANDY BAR ADVANTAGE 43M
HF KODIAK 5R
WILBAR RUBY 955N

S A V 004 PREDOMINANT 4438 NHF AMF CAF
HF ECHO 306T
HF ECHO 187N

TC ADVANTAGE NHF AMF CAF
SANDY BAR JEMINA 44K
VERMILION YELLOWSTONE NHF AMF CAF
WILBAR RUBY 161J
S A V 8180 TRAVELER 004 NHF AMF CAF
S A V EMBLYNETTE 1182
TC FREEDOM 104 NHF AMF
DURALTA 14C ECHO 32E

BW	ADJ WW	EPD'S	BW	WW	YW	MILK	TM	YG
68	607		-0.3	36	65	19		32

19A 4 Frozen Embryos

SANDY BAR ADVANTAGE 43M
HF KODIAK 5R
WILBAR RUBY 955N

TC FREEDOM 104
HF ECHO 84R
HFDF ECHO 6N

19B 4 Frozen Embryos

SANDY BAR ADVANTAGE 43M
HF KODIAK 5R
WILBAR RUBY 955N

RIVERBEND POWERLINE 0050
HFDF ECHO 6N
HF ECHO 83J

19C 3 Frozen Embryos

D H D TRAVELER 6807 NHF AMF
DUFF ENCORE 702 NHF AMF CAF
O C C DIXIE ERICA 814G

TC FREEDOM 104
HF ECHO 187N
DURALTA 14C ECHO 32E

Blackbird Cow Family
The HF Blackbird Cow Family



LOT 20A

HF BLACKBIRD 63X



LOT 20

HF BLACKBIRD 97S

20

FEMALE • JHF 97S • JANUARY 21 2006 • #1331745

HF *Blackbird* 97S

TC FREEDOM 104 NHF AMF
HF FREE WHEELER 191N
DURALTA 14C ECHO 32E

O G L BATTLE CRY 427 128
HF BLACKBIRD 116N
HF BLACKBIRD 99H

CONNEALY FOREFRONT NHF AMF CAF
T C RUBY 909S
HF WALK-ON 14C
STONEHAVEN MISS PONDEROSA 9U
NICHOLS EUREKA W57
O G L DUSTY ROSE 128 902
EXAR RITO 5072
HF BLACKBIRD 27C

BW	ADJ WW	EPD'S	BW	WW	YW	MILK	TM	YG
85	597		4.1	34	80	26	43	46

AI APR 15 TO HF KODIAK SR. PE HF IDEAL 266U MAY 23 - JULY 19 (CHECKED SAFE FAVORABLE TO PE)

20A

FEMALE • JHF 63X • JANUARY 14 2010 • #1569368

HF *Blackbird* 63X

SANDY BAR ADVANTAGE 43M
HF KODIAK SR
WILBAR RUBY 955N

TC ADVANTAGE NHF AMF CAF
SANDY BAR JEMINA 44K
VERMILION YELLOWSTONE NHF AMF CAF
WILBAR RUBY 161J

BW	ADJ WW	EPD'S	BW	WW	YW	MILK	TM	YG
79	696		1.7	42	83	21	41	

The Blackbird cow of notoriety is Wyatt's old show female HF Blackbird 99G, who you will note as the grand dam or great grand dam in many of the pedigrees. Blackbird 99G can also list off many accomplishments including Champion First Lady Classic at Agribition, Grand Champion Female at Agribition and Farmfair, as well as numerous Junior Championships. She is a very deep bodied, great uddered, thick and easy fleshing female that moves like a cat. Blackbird 99G is the dam or grand dam of high sellers like HF Blackbird 120L (x Battle Cry) to Leonard and Sandra Kesteven. A herdsire, HF Supreme 37T(x Kodiak) to Early Sunset Ranch for \$21,500.00 as well as a herd sire to M&J Farms for \$5100.00. One of the most notable characteristics of the Blackbirds is their outstanding quiet disposition. This cow family is cherished at Hamilton Farms for having outstanding phenotype, volume and thickness, and udder quality which is second to none.